

**LOCHNER**  
 H. W. LOCHNER, INC.  
 2840 PLAZA PLACE, SUITE 202  
 RALEIGH, NC 27612  
 (919)571-7111

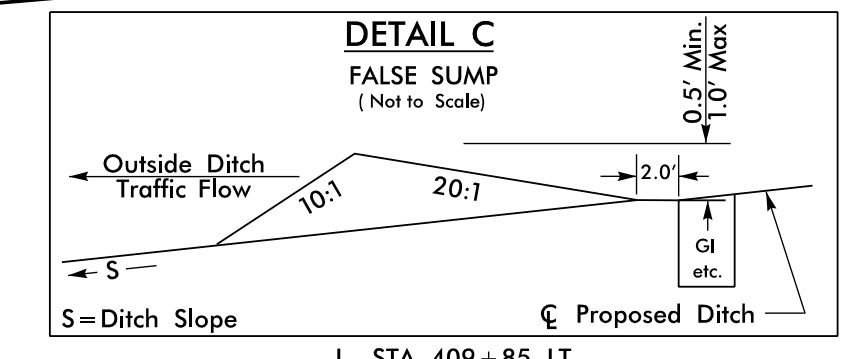
NC License Number F-0159  
 NC License Number C-1554

PROJECT REFERENCE NO. R-2915C	SHEET NO. 16
ROADWAY DESIGN ENGINEER 9/1/2016	HYDRAULICS ENGINEER
DOCUMENT NOT CONSIDERED FINAL UNLESS ALL SIGNATURES COMPLETED	

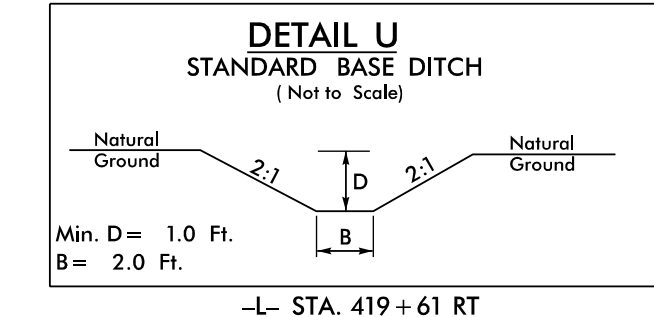
MATCH TO SHEET 23 -L- STA. 413+50 @ 625.00' LT.

-L-  
 PIs Sta 395+91.52 PI Sta 400+46.13 PIs Sta 404+86.23  
 $\Theta_s = 7^{\circ} 06' 29.2''$   $\Delta = 29^{\circ} 04' 01.1''$  (LT)  $\Theta_s = 7^{\circ} 06' 29.2''$   
 $L_s = 330.00'$   $D = 4' 18'' 28.6''$   $L_s = 330.00'$   
 $LT = 220.18'$   $L = 674.73'$   $LT = 220.18'$   
 $ST = 110.16'$   $T = 344.79'$   $ST = 110.16'$   
 $R = 1,330.00'$   
 $SE = .06$   
 $Ro = \text{As Shown}$

-L-  
 PIs Sta 409+26.24 PI Sta 413+12.92 PIs Sta 416+92.14  
 $\Theta_s = 7^{\circ} 06' 29.2''$   $\Delta = 23^{\circ} 31' 04.1''$  (RT)  $\Theta_s = 7^{\circ} 06' 29.2''$   
 $L_s = 330.00'$   $D = 4' 18'' 28.6''$   $L_s = 330.00'$   
 $LT = 220.18'$   $L = 545.92'$   $LT = 220.18'$   
 $ST = 110.16'$   $T = 276.86'$   $ST = 110.16'$   
 $R = 1,330.00'$   
 $SE = .06$   
 $Ro = \text{As Shown}$



-L- STA. 409+85 LT  
 -L- STA. 410+86 LT  
 -L- STA. 413+37 LT  
 -L- STA. 415+35 LT  
 -L- STA. 416+85 LT  
 -L- STA. 419+54 LT

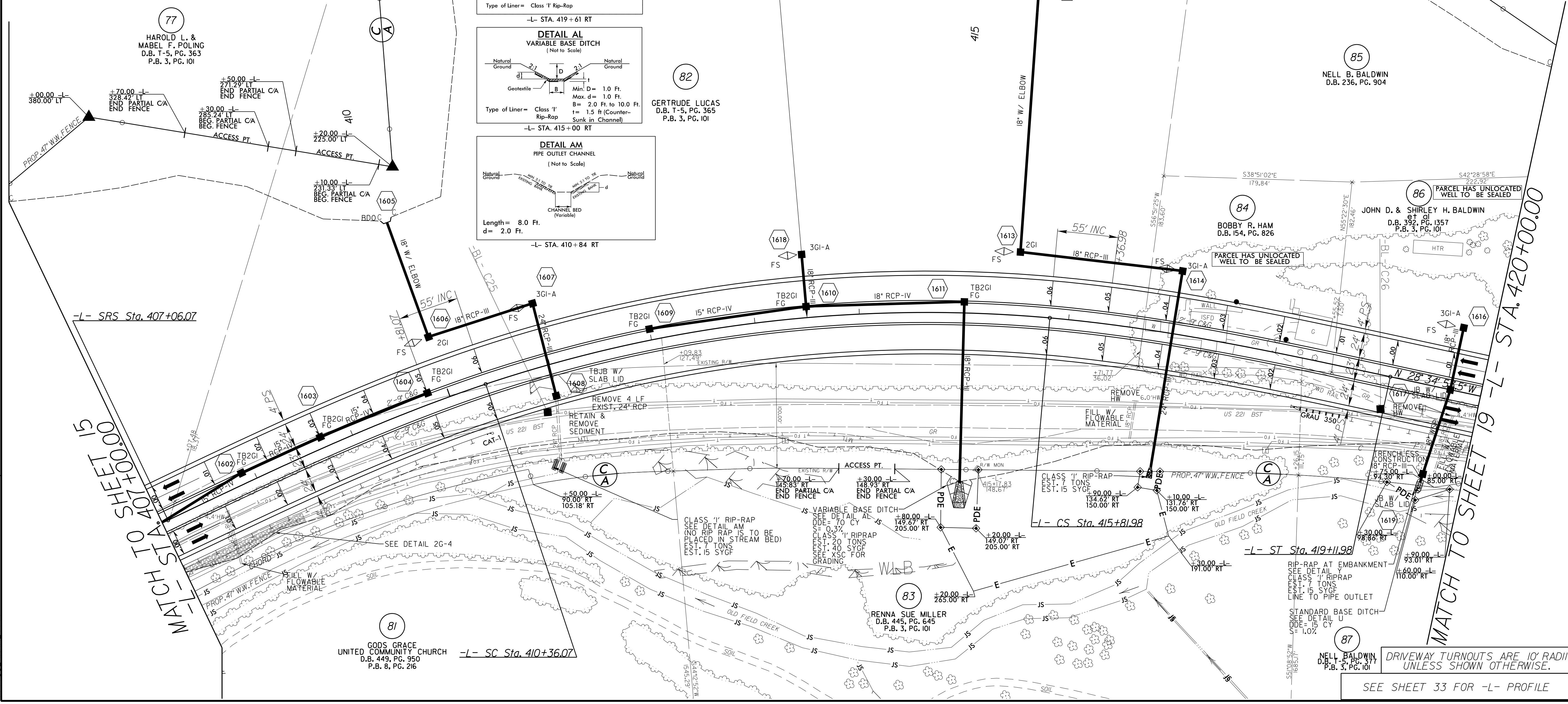
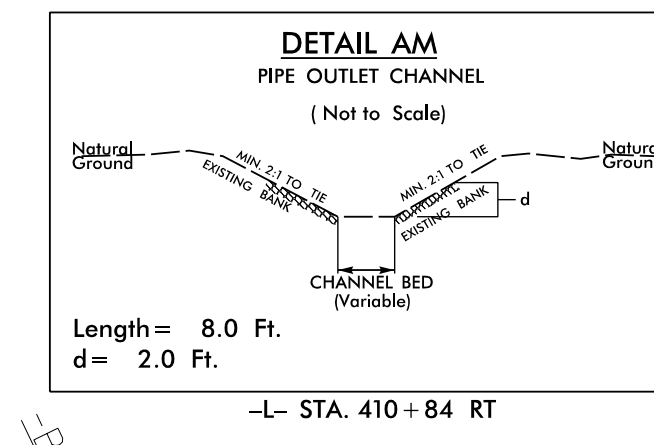
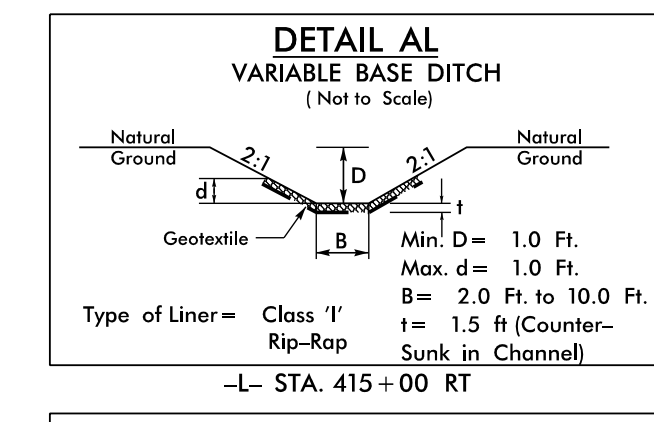


-L- STA. 419+61 RT

**DETAIL Y**  
RIP RAP AT EMBANKMENT  
(Not to Scale)

Type of Liner = Class 'I' Rip-Rap

-L- STA. 419+61 RT



77  
 HAROLD L. &  
 MABEL F. POLING  
 D.B. T-5, PG. 363  
 P.B. 3, PG. 101

82  
 GERTRUDE LUCAS  
 D.B. T-5, PG. 365  
 P.B. 3, PG. 101

85  
 NELL B. BALDWIN  
 D.B. 236, PG. 904

86  
 JOHN D. & SHIRLEY H. BALDWIN  
 D.B. 154, PG. 1357  
 P.B. 3, PG. 101

84  
 BOBBY R. HAM  
 D.B. 154, PG. 826

83  
 RENNA SUE MILLER  
 D.B. 445, PG. 645  
 P.B. 3, PG. 101

81  
 GODS GRACE  
 UNITED COMMUNITY CHURCH  
 D.B. 449, PG. 950  
 P.B. 8, PG. 216

87  
 NELL BALDWIN  
 D.B. 236, PG. 904

DRIVEWAY TURNOUTS ARE 10' RADII  
UNLESS SHOWN OTHERWISE.

SEE SHEET 33 FOR -L- PROFILE

REVISIONS

31-AUG-2016 16:31  
 R:\Roadway\PC\2915C\_rdy\_PSH16.dgn  
 \$\$\$\$

MATCH TO SHEET 24  
 STA. 405+00.00

MATCH TO SHEET 19  
 STA. 420+00.00

-L- SRS Sta. 407+06.07

-L- SC Sta. 410+36.07

-L- CS Sta. 415+81.98

-L- ST Sta. 419+11.98