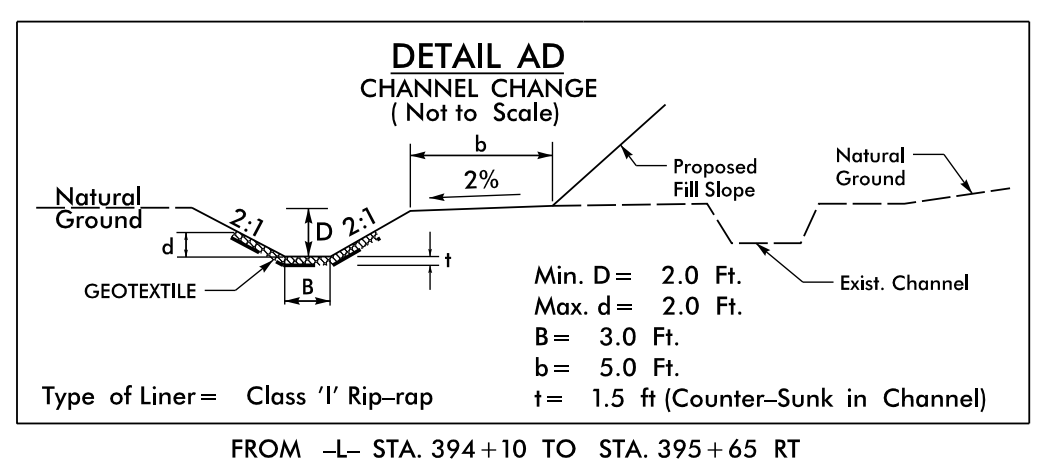
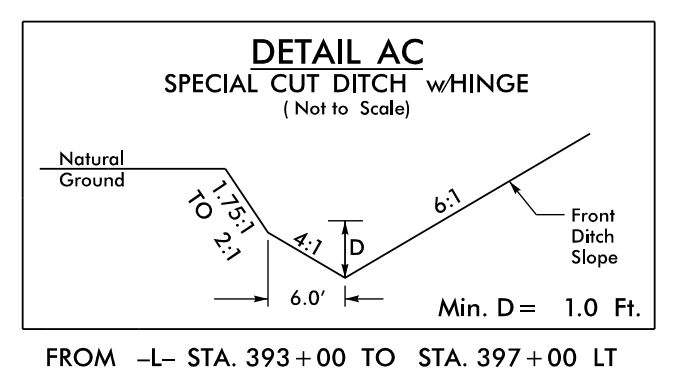
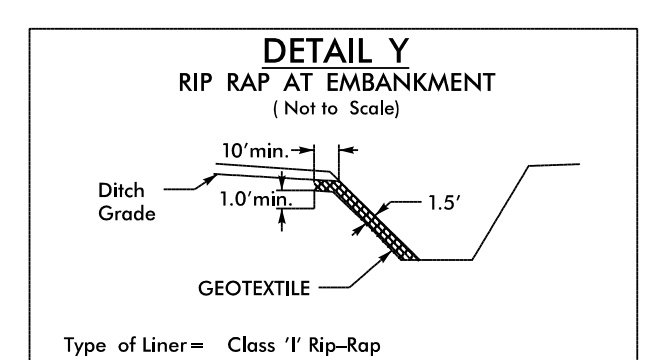
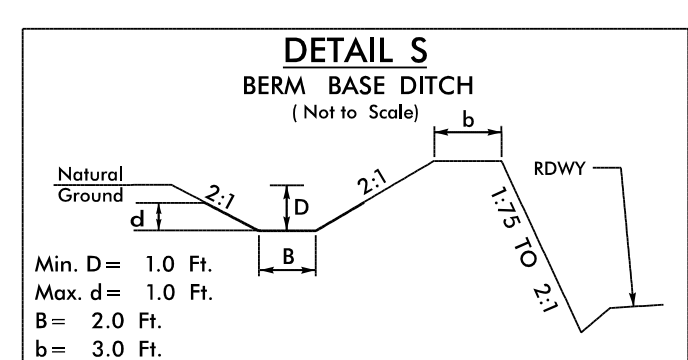
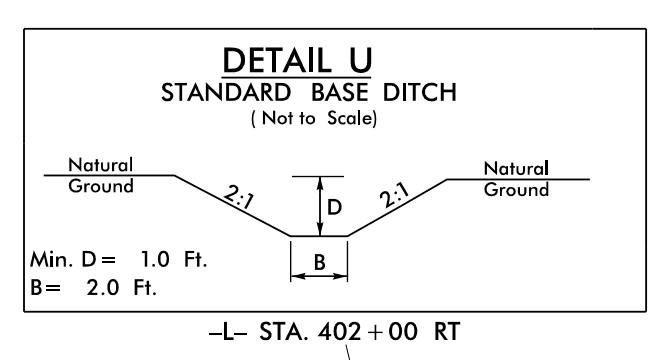
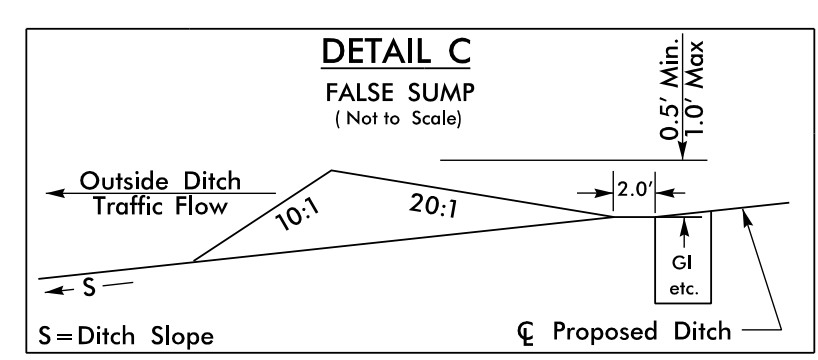
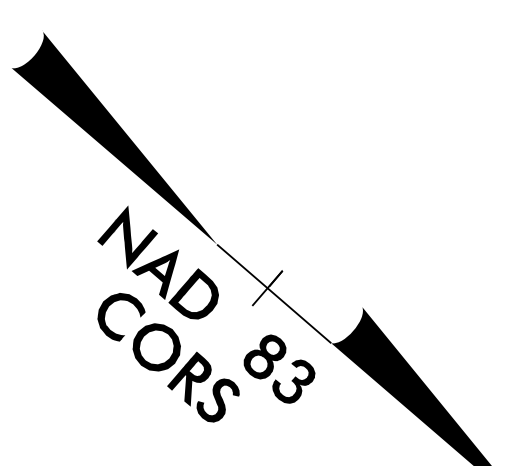


8/17/19

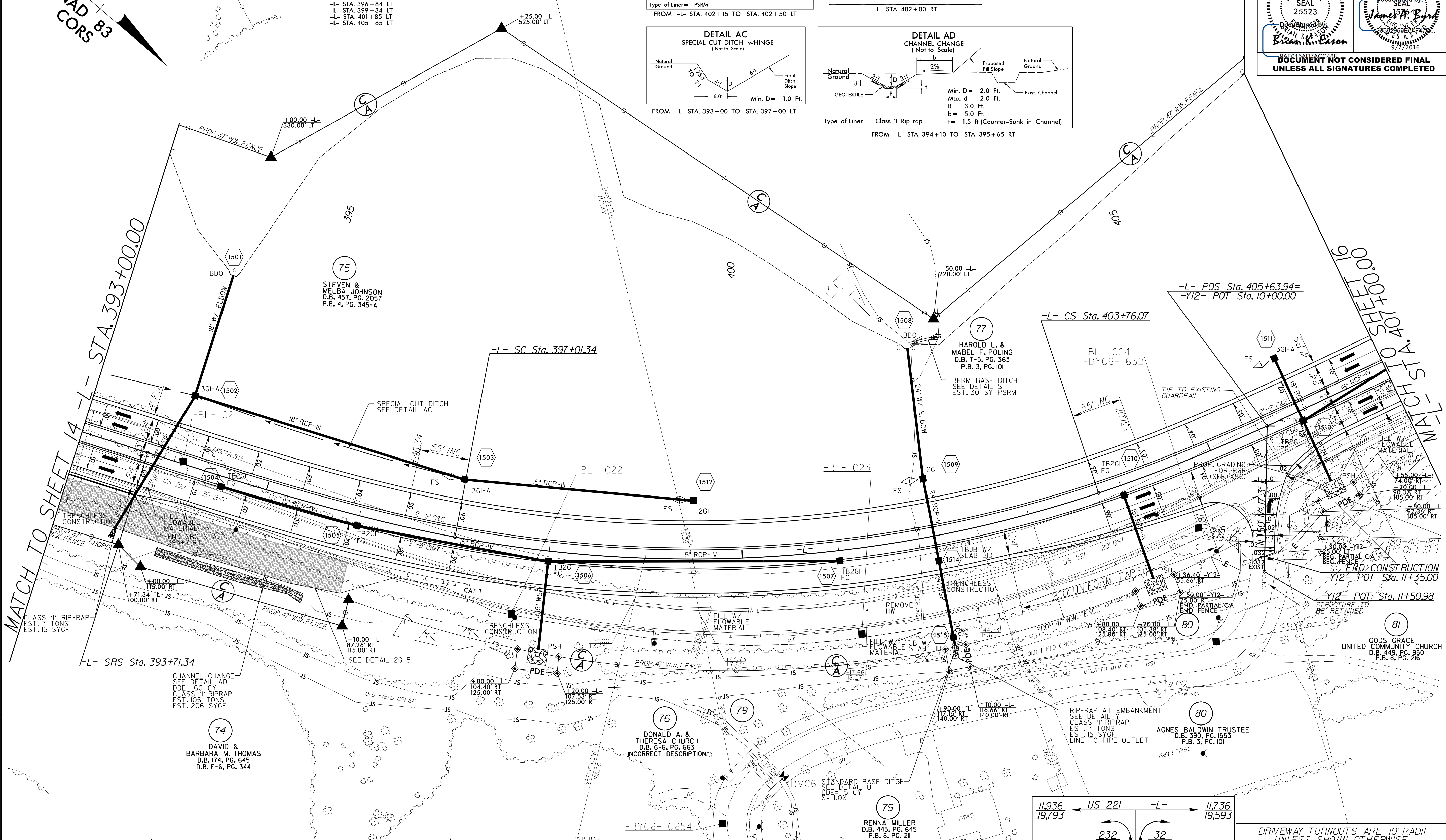
LOCHNER
 H. W. LOCHNER, INC.
 2840 PLAZA PLACE, SUITE 202
 RALEIGH, NC 27612
 (919)571-7111
 NC License Number F-0159

HNTB
 343 E. SIX FORKS ROAD, SUITE 200
 RALEIGH, NC 27609
 NC License Number C-1554

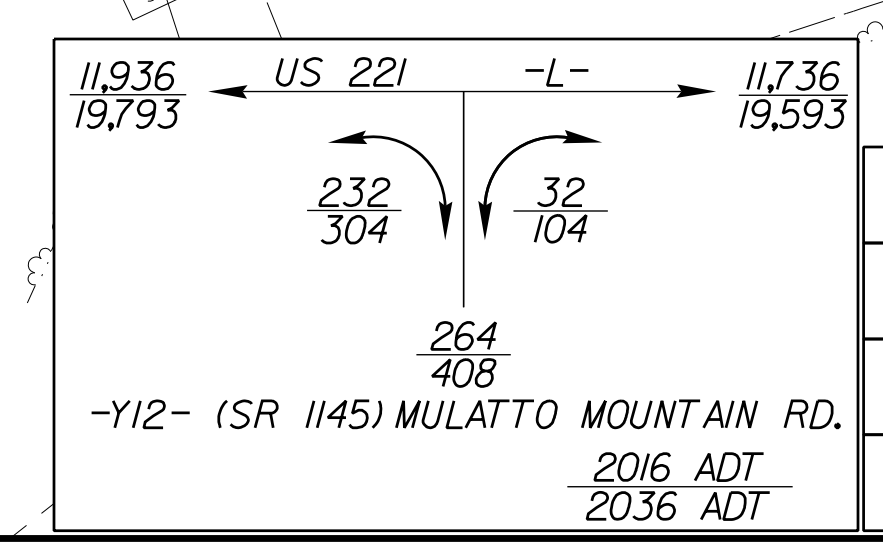
PROJECT REFERENCE NO. R-2915C	SHEET NO. 15
RW SHEET NO.	HYDRAULICS ENGINEER
ROADWAY DESIGN ENGINEER	SEAL 25523
<p>DOCUMENT NOT CONSIDERED FINAL UNLESS ALL SIGNATURES COMPLETED</p>	



REVISIONS



Pls Sta 387+78.28	Pls Sta 390+01.59	Pls Sta 392+24.68	Pls Sta 395+91.52	Pls Sta 400+46.13	Pls Sta 404+86.23
$\Theta_s = 2^\circ 01' 59.1''$	$\Delta = 5^\circ 32' 23.2''$ (RT)	$\Theta_s = 2^\circ 01' 59.1''$	$\Theta_s = 7^\circ 06' 29.2''$	$\Delta = 29^\circ 04' 01.1''$ (LT)	$\Theta_s = 7^\circ 06' 29.2''$
Ls = 220.00'	D = 1' 50' 53.7"	Ls = 220.00'	Ls = 330.00'	D = 4' 18' 28.6"	Ls = 330.00'
LT = 146.68'	L = 299.73'	LT = 146.68'	LT = 220.18'	L = 674.73'	LT = 220.18'
ST = 73.34'	T = 149.98'	ST = 73.34'	ST = 110.16'	T = 344.79'	ST = 110.16'
R = 3,100.00'	D.B. = .04			R = 1,330.00'	
SE = .04				SE = .06	
Ro = See Plans				Ro = As Shown	



DRIVEWAY TURNOUTS ARE 10' RADII UNLESS SHOWN OTHERWISE.

SEE SHEET 2D-2 FOR PSH DETAIL

SEE SHEET 38 FOR -Y12- PROFILE

SEE SHEET 32 FOR -L- PROFILE

31-AUG-2016 16:33
 R:\Roadway\Projects\2915C_rdw\PSH15.dgn
 R:\Roadway\Projects\2915C_rdw\PSH15.dgn