

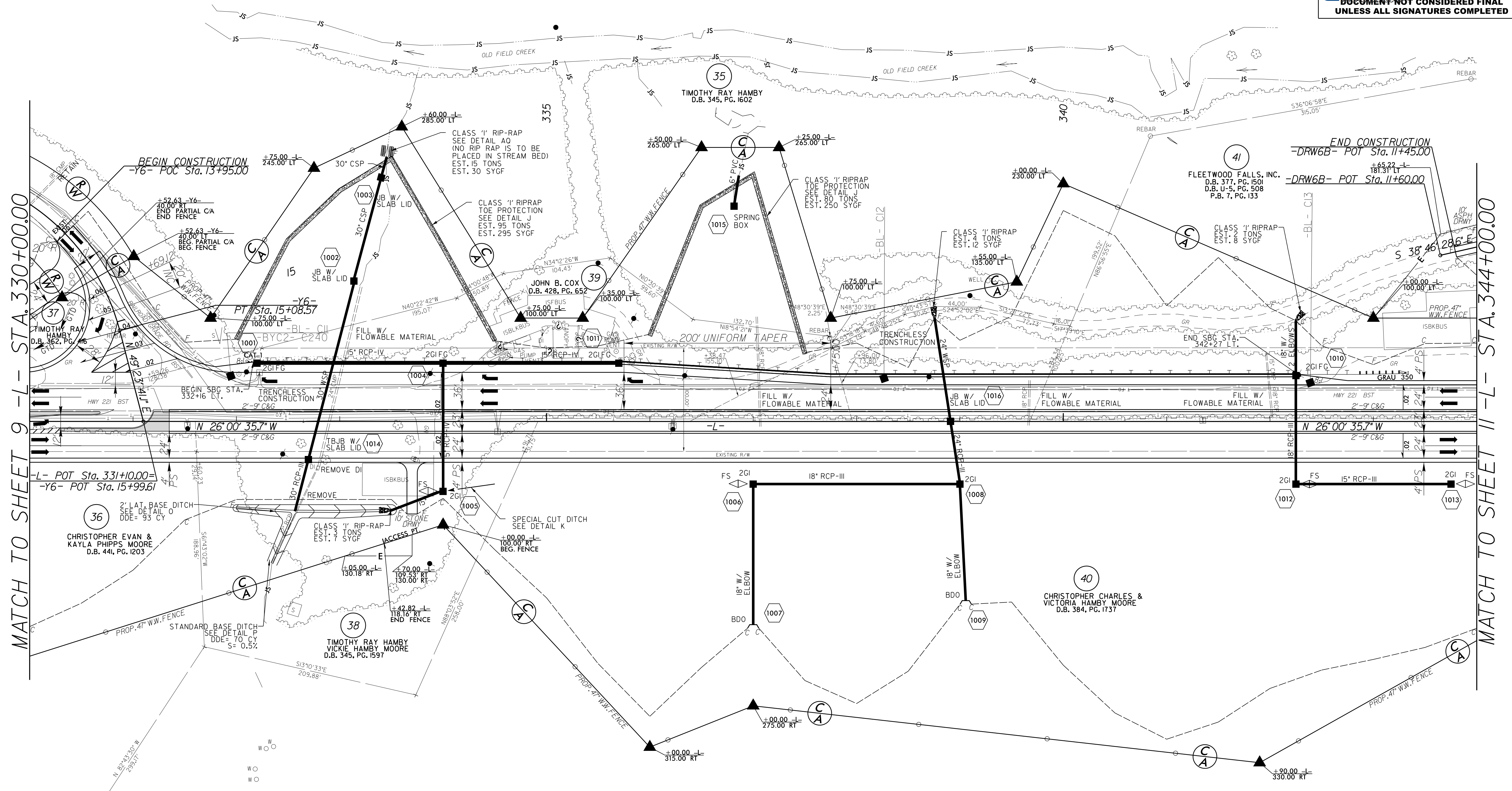
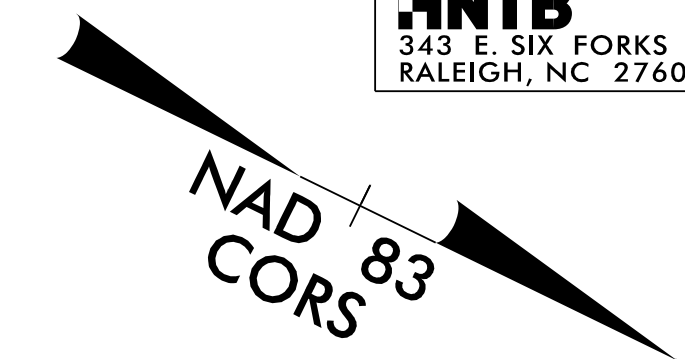
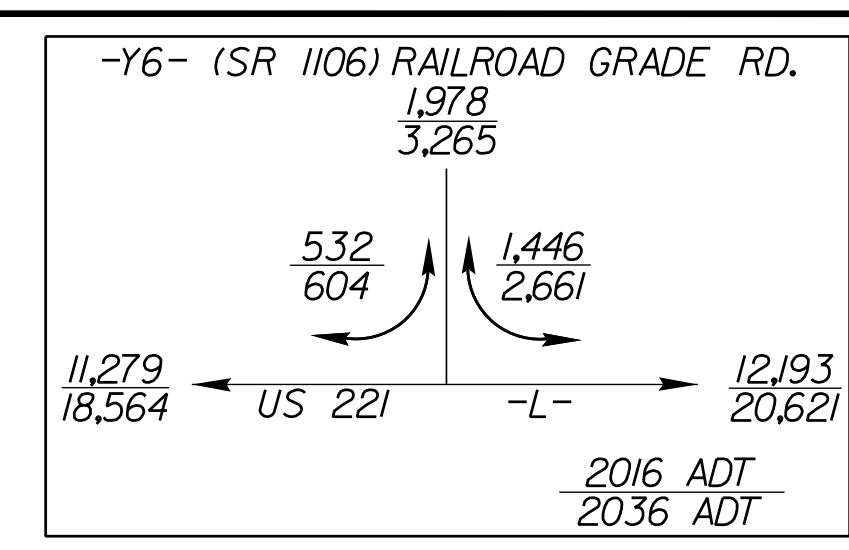
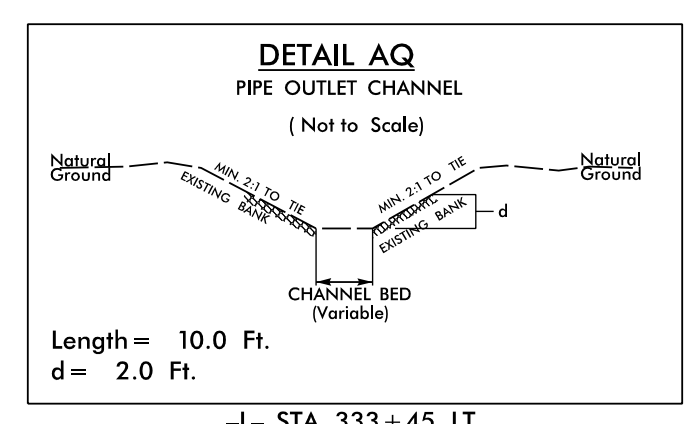
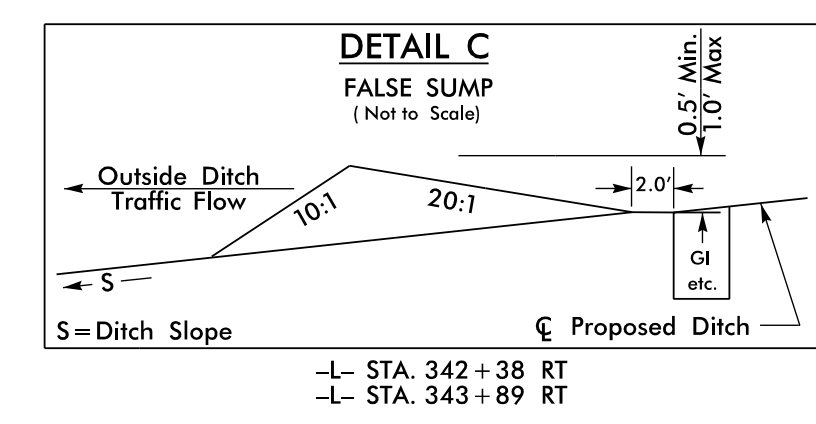
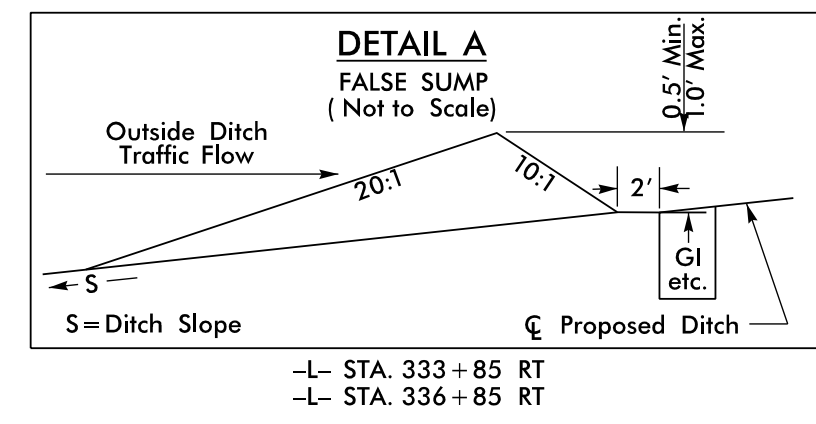
8/17/99

**LOCHNER**  
 H. W. LOCHNER, INC.  
 2840 PLAZA PLACE, SUITE 202  
 RALEIGH, NC 27612  
 (919)571-7111

NC License Number F-0159  
 NC License Number C-1554

9/1/2016

PROJECT REFERENCE NO. R-2915C	SHEET NO. 10
ROADWAY DESIGN ENGINEER	HYDRAULICS ENGINEER
<p><b>DOCUMENT NOT CONSIDERED FINAL UNLESS ALL SIGNATURES COMPLETED</b></p>	

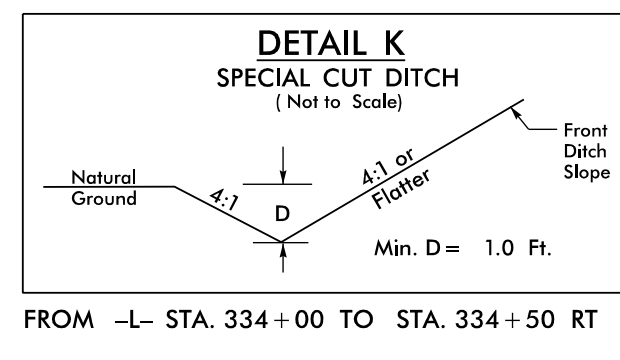
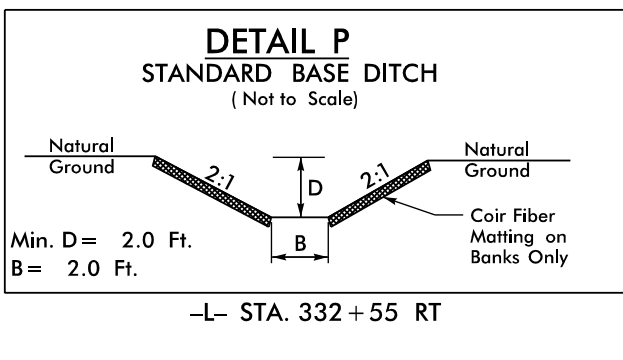
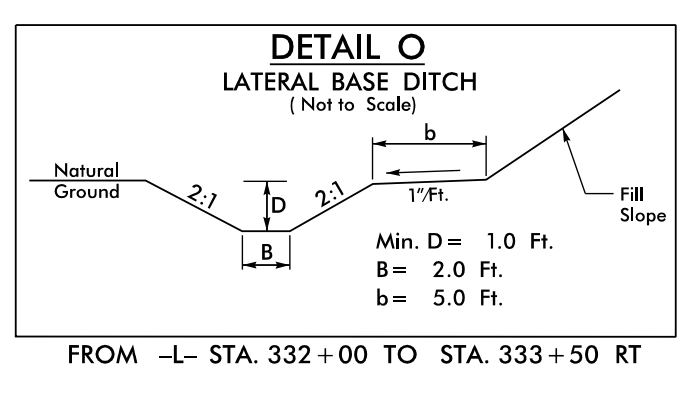
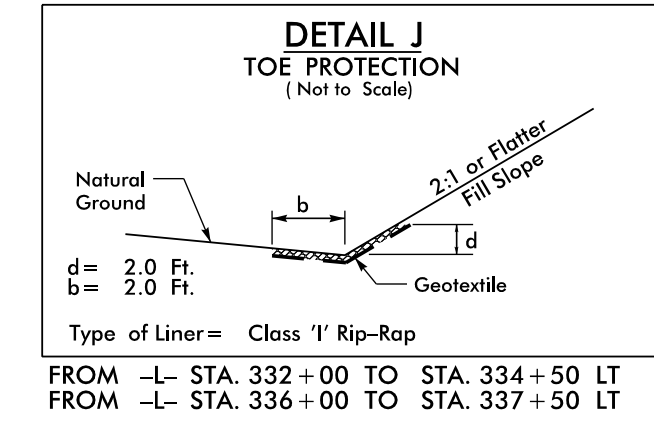


MATCH TO SHEET 9 -L- STA. 330+00.00

MATCH TO SHEET 11 -L- STA. 344+00.00

REVISIONS

-Y6-  
 PI Sta 13+89.57  
 $\Delta = 95^{\circ}02'44.9''$  (RT)  
 $D = 27^{\circ}17'01.3''$   
 $L = 348.36'$   
 $T = 229.36'$   
 $R = 210.00'$   
 $SE = .06$   
 $Ro = AS SHOWN$



DRIVEWAY TURNOUTS ARE 10' RADII UNLESS SHOWN OTHERWISE.  
 SEE SHEET 40 FOR -DRW6B- PROFILE  
 SEE SHEET 36 FOR -Y6- PROFILE  
 SEE SHEET 29 FOR -L- PROFILE  
 SEE SHEET 2B-9 FOR INTERSECTION DETAIL

01-SEP-2016 13:30  
 R:\Roadway\Projects\2915C\_rdy\_PSH10.dgn  
 \$\$\$\$