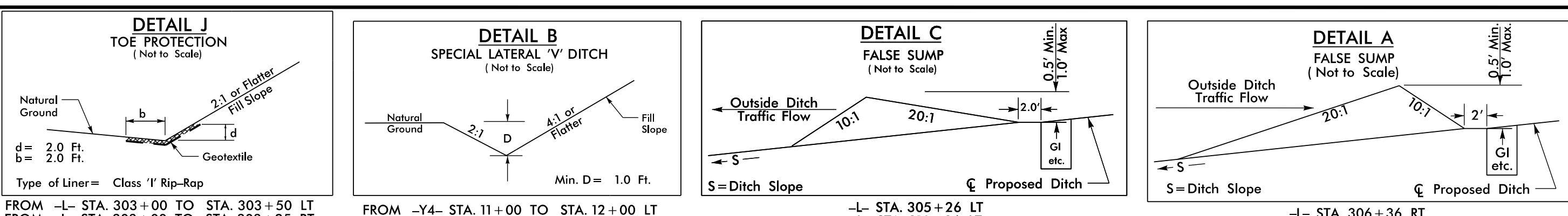
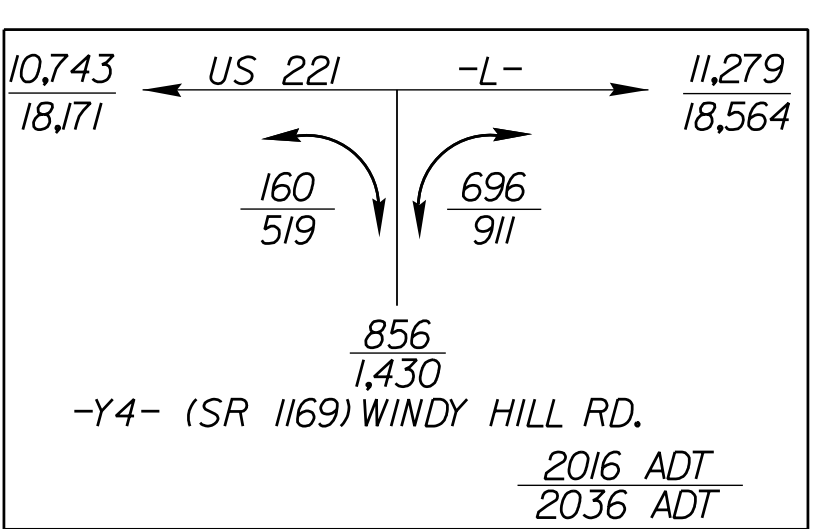


8/17/99

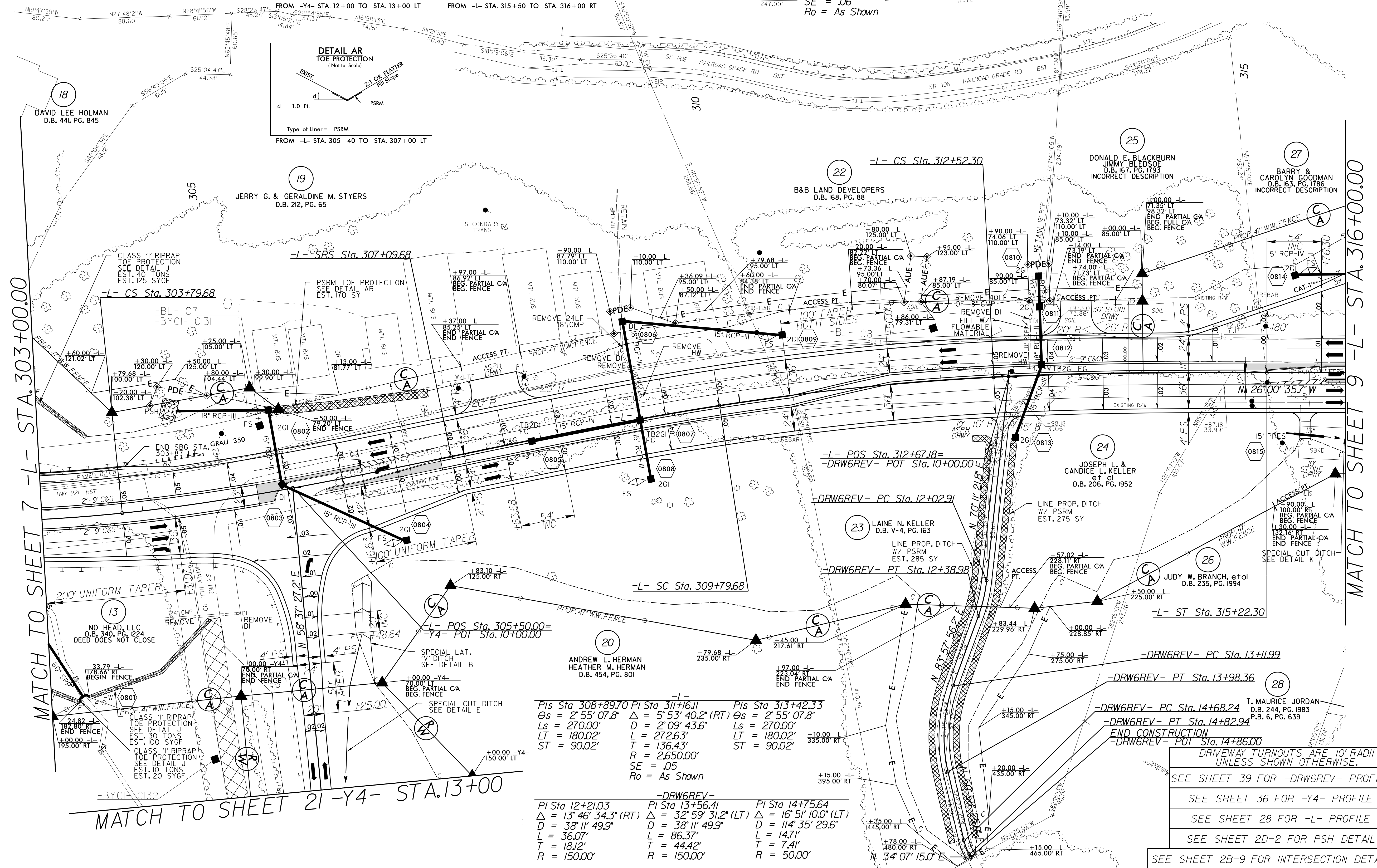


**LOCHNER**  
 H. W. LOCHNER, INC.  
 2840 PLAZA PLACE, SUITE 202  
 RALEIGH, NC 27612  
 (919) 571-7111  
 NC License Number F-0159

**NTB**  
 343 E. SIX FORKS ROAD, SUITE 200  
 RALEIGH, NC 27609  
 NC License Number C-1554

PROJECT REFERENCE NO. R-2915C SHEET NO. 8  
 RW SHEET NO.  
 ROADWAY DESIGN ENGINEER  
 HYDRAULICS ENGINEER  
 9/1/2016  
 NORTH CAROLINA PROFESSIONAL SEAL 25523  
 DESIGNED BY BRIAN K. BRANN  
 NORTH CAROLINA PROFESSIONAL SEAL  
 AUTHORIZED BY JAMES A. BYRD  
 9/7/2016  
 DOCUMENT NOT CONSIDERED FINAL UNLESS ALL SIGNATURES COMPLETED

Pls Sta 299+38.03 PI Sta 302+14.38 Pls Sta 304+89.79  
 $\Delta s = 5' 50'' 08.5''$   $\Delta = 11' 44'' 01.8''$  (LT)  $\Delta s = 5' 50'' 08.5''$   
 $Ls = 330.00'$   $D = 3' 32'' 12.4''$   $Ls = 330.00'$   
 $LT = 220.12'$   $L = 331.77'$   $LT = 220.12'$   
 $ST = 110.11'$   $T = 166.47'$   $ST = 110.11'$   
 $R = 1,620.00'$   
 $SE = .06$   
 $Ro = As Shown$



REVISIONS

22-AUG-2016 16:49  
 R2915C\_rdw\_PSH08.dgn  
 PS:R:\PSH\2016\1649\22-AUG-2016 16:49 R2915C\_rdw\_PSH08.dgn

DRIVEWAY TURNOUTS ARE 10' RADIUS UNLESS SHOWN OTHERWISE.  
 SEE SHEET 39 FOR -DRW6REV- PROFILE  
 SEE SHEET 36 FOR -Y4- PROFILE  
 SEE SHEET 28 FOR -L- PROFILE  
 SEE SHEET 2B-2 FOR PSH DETAIL  
 SEE SHEET 2B-9 FOR INTERSECTION DETAIL