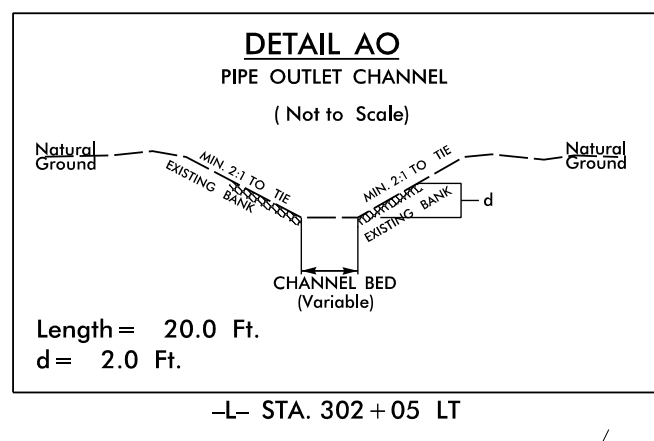
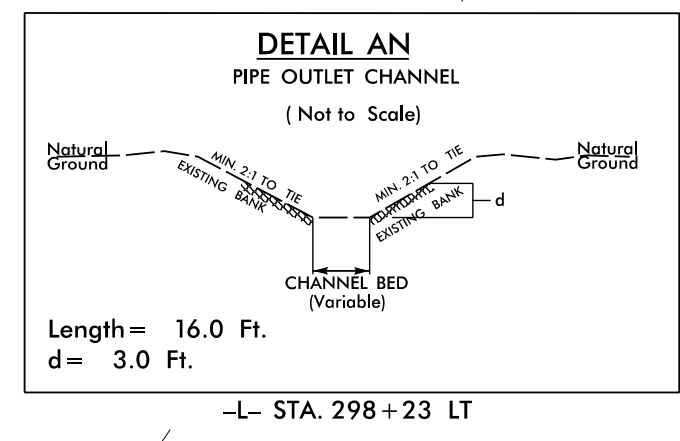
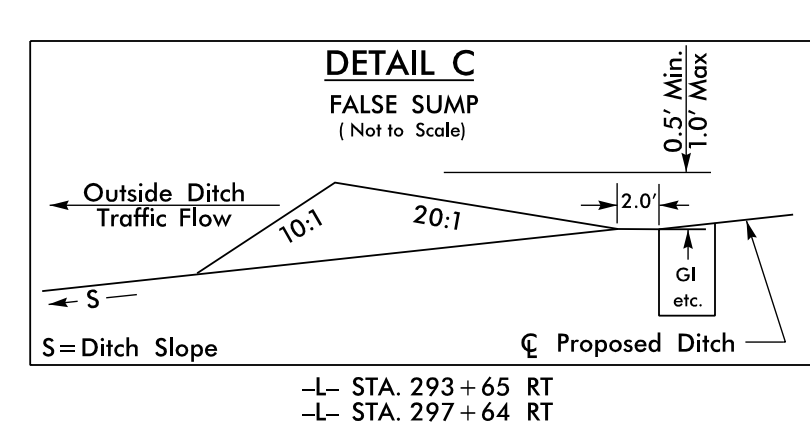
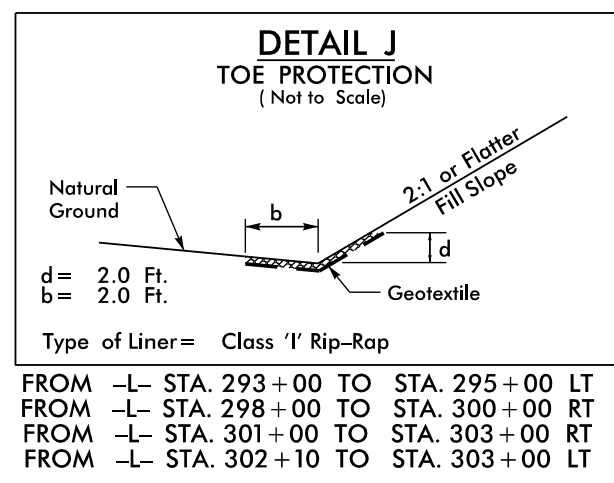


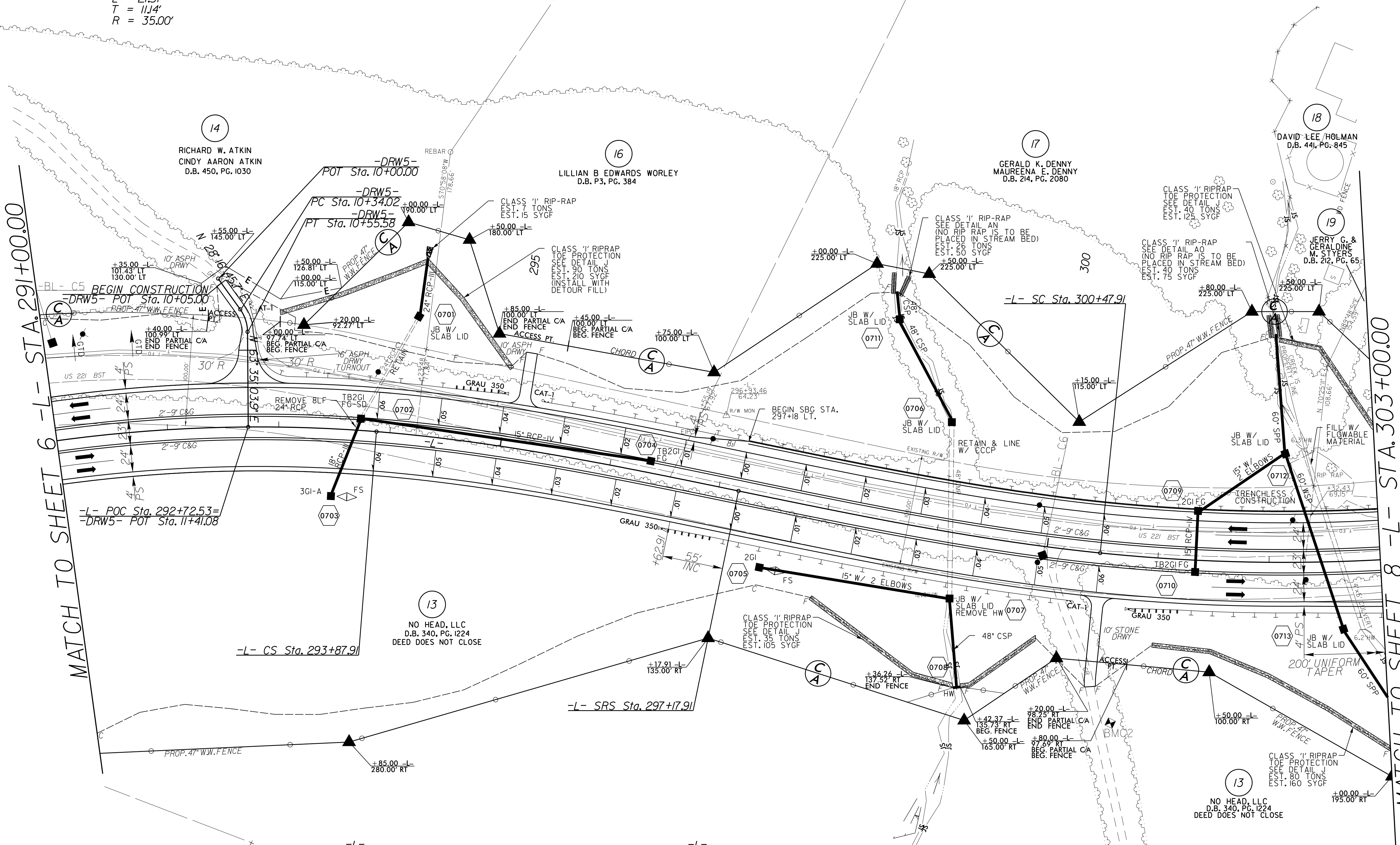
8/17/19

LOCHNER
 H. W. LOCHNER, INC.
 2840 PLAZA PLACE, SUITE 202
 RALEIGH, NC 27612
 (919)571-7111
HNTB
 343 E. SIX FORKS ROAD, SUITE 200
 RALEIGH, NC 27609

PROJECT REFERENCE NO. R-2915C	SHEET NO. 7
RW SHEET NO.	HYDRAULICS ENGINEER
ROADWAY DESIGN ENGINEER	ENGINEER
9/1/2016	9/7/2016
DOCUMENT NOT CONSIDERED FINAL UNLESS ALL SIGNATURES COMPLETED	



-DRW5-
 PI Sta 10+45.15
 $\Delta = 35' 18" 18.2" (RT)$
 $D = 163' 42" 08.0"$
 $L = 21.57'$
 $T = 11.14'$
 $R = 35.00'$



REVISIONS



Pls Sta 283+12.59 $\Theta_s = 7' 06" 29.2"$ $L_s = 330.00'$ $LT = 220.18'$ $ST = 110.16'$	PI Sta 289+27.54 $\Delta = 41' 35" 36.0" (RT)$ $D = 4' 18" 28.6"$ $L = 965.50'$ $T = 505.13'$ $R = 1,330.00'$ $SE = .06$ $Ro = As Shown$	Pls Sta 294+98.07 $\Theta_s = 7' 06" 29.2"$ $L_s = 330.00'$ $LT = 220.18'$ $ST = 110.16'$	Pls Sta 299+38.03 $\Theta_s = 5' 50' 08.5"$ $L_s = 330.00'$ $LT = 220.12'$ $ST = 110.11'$	PI Sta 302+14.38 $\Delta = 11' 44" 01.8" (LT)$ $D = 3' 32" 12.4"$ $L = 331.77'$ $T = 166.47'$ $R = 1,620.00'$ $SE = .06$ $Ro = As Shown$	Pls Sta 304+89.79 $\Theta_s = 5' 50' 08.5"$ $L_s = 330.00'$ $LT = 220.12'$ $ST = 110.11'$
---	---	---	---	---	---

DRIVEWAY TURNOUTS ARE 10' RADII
UNLESS SHOWN OTHERWISE.

SEE SHEET 39 FOR -DRW5- PROFILE

SEE SHEET 27 FOR -L- PROFILE

25-AUG-2016 12:59
 R:\Roadway\2016\2915C\rdy_PSH07.dgn
 \$\$\$\$