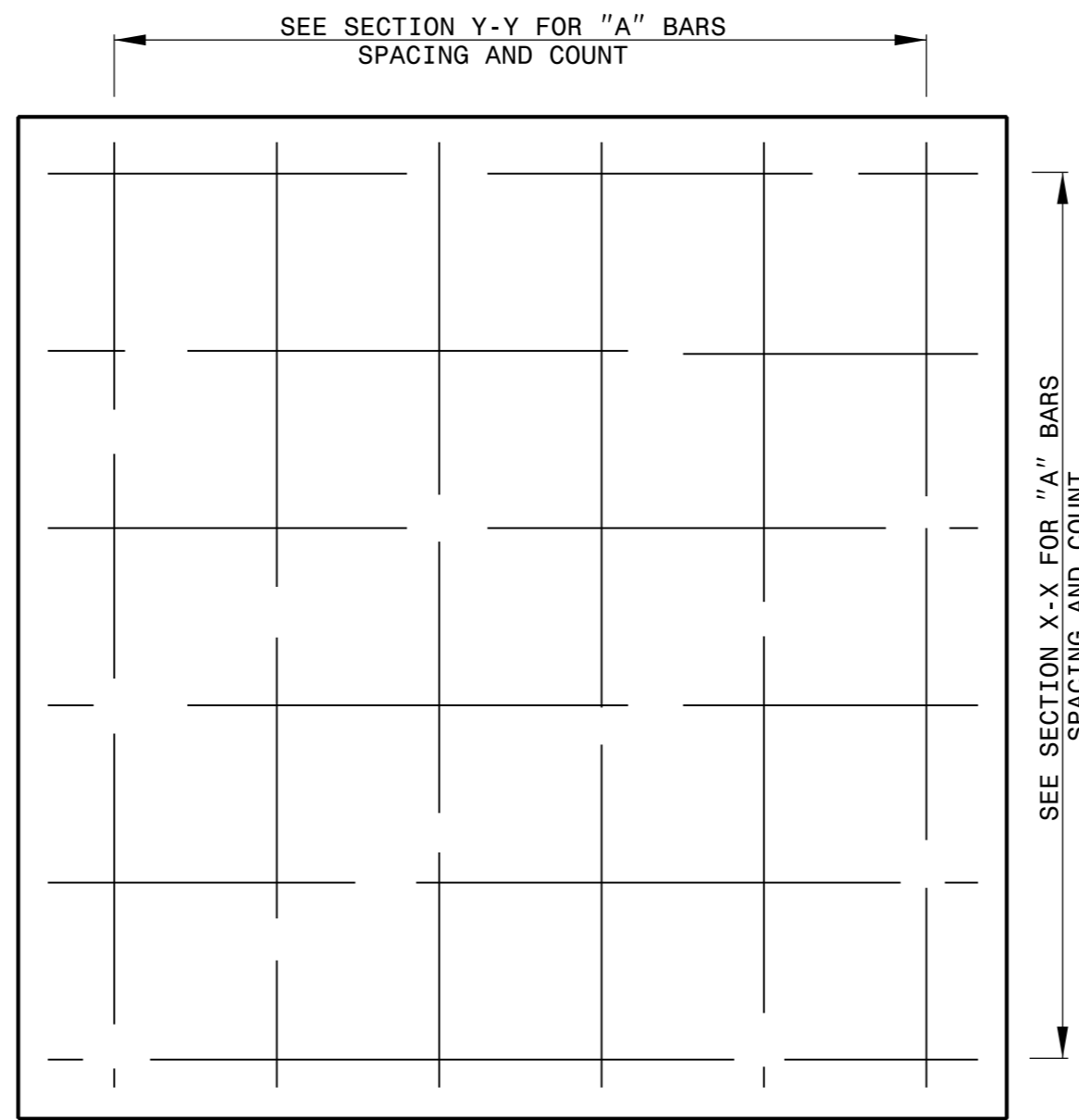
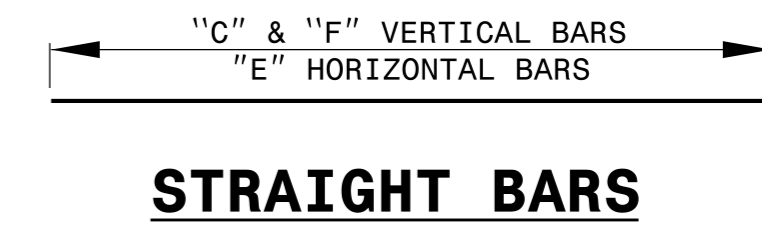


PLAN

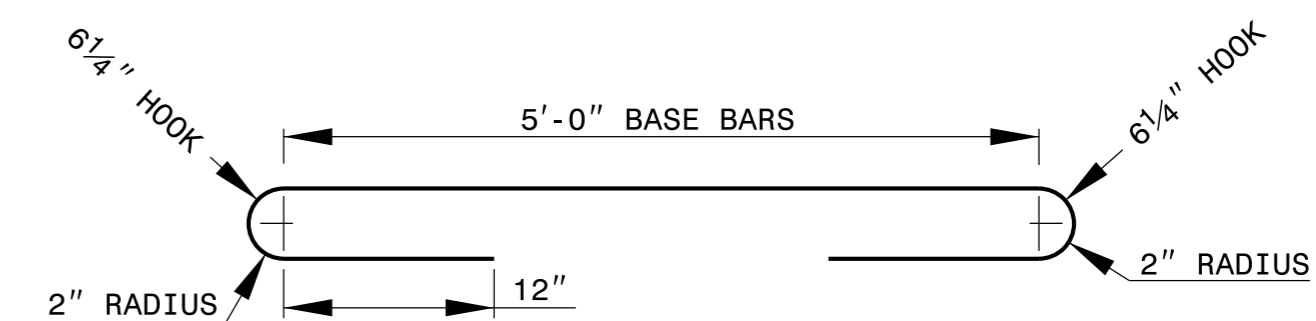


PLAN OF BASE

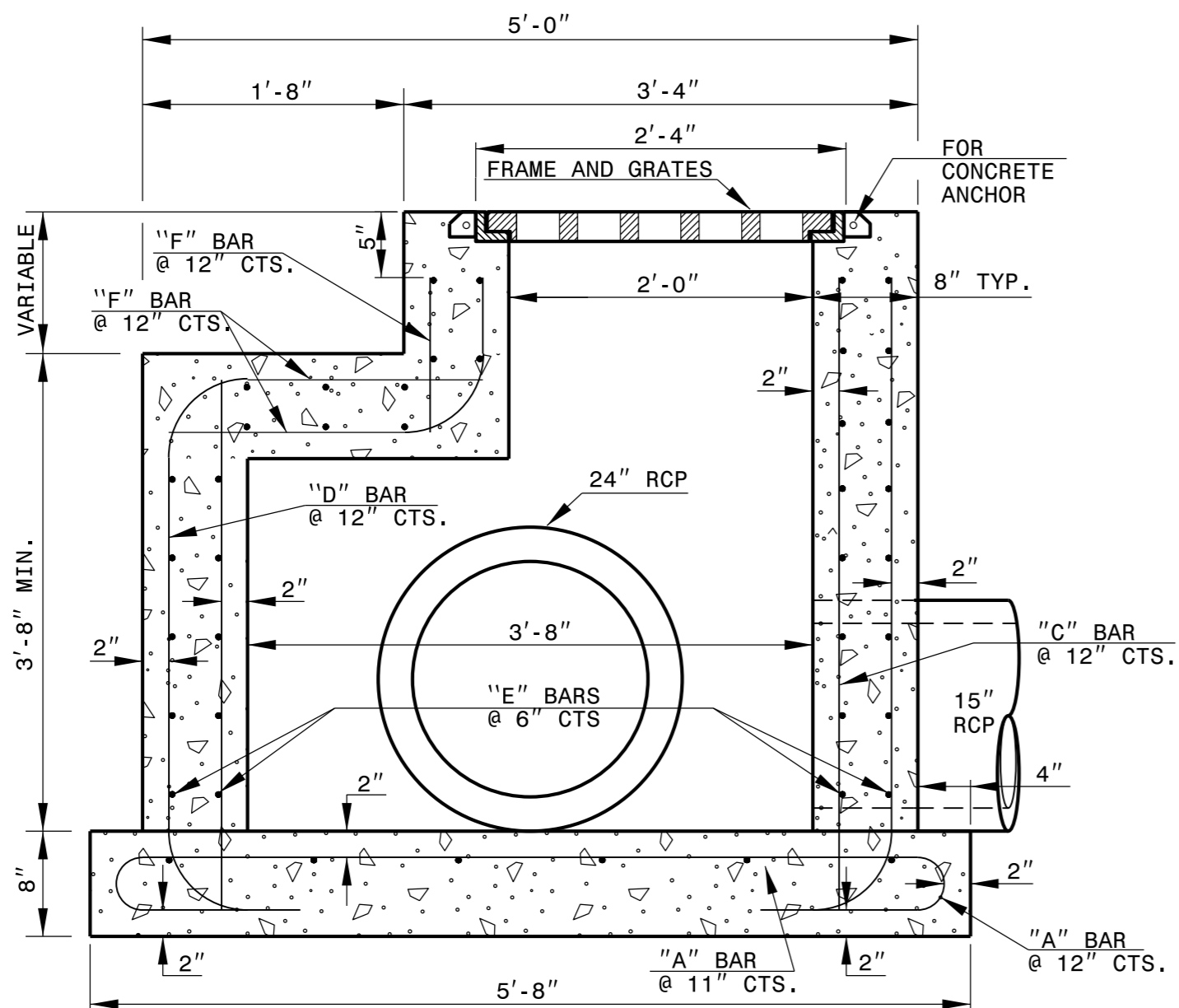
- GENERAL NOTES:
- USE CLASS 'AA' CONCRETE FOR CAST IN PLACE CONCRETE BOX.
  - USE CLASS 'M' CONCRETE IN THE WALL CAVITY FOR REINFORCED BRICK CONSTRUCTION AND CLASS 'AA' FOR THE FOOTING BASE.
  - CHAMFER ALL EXPOSED CONCRETE CORNERS 1".
  - USE FORMS TO CONSTRUCT THE BOTTOM SLAB.
  - IF PIPES ARE SET IN THE BASE FOLLOW CONSTRUCTION PROCEDURES SHOWN BY STD. DWG. 840.00.
  - PRECAST UNITS MADE OF CLASS 'AA' CONCRETE MAY BE USED IN LIEU OF BRICK MASONRY CONSTRUCTION.
  - INCLUDE REINFORCING STEEL COST IN THE UNIT OR LINEAR FOOT BID PRICE FOR "MASONRY DRAINAGE STRUCTURE".
  - REFERENCE STD. DWG. 840.25 FOR FRAME ANCHORAGE.
  - CONCRETE BRICK, JUMBO BRICK AND 4" SOLID CONCRETE BLOCK WILL BE PERMITTED.
  - CONCRETE FOR BRICK BOX REFER TO SECTION 832 OF THE STANDARD SPECIFICATIONS.
  - PROVIDE GRATED DROP INLETS OVER 3'-6" DEEP WITH STEPS SPACED 12" ON CENTER AS DIRECTED BY STD. DWG. 840.66.
  - FRAME AND GRATES ARE SEPARATE CONTRACT ITEMS.



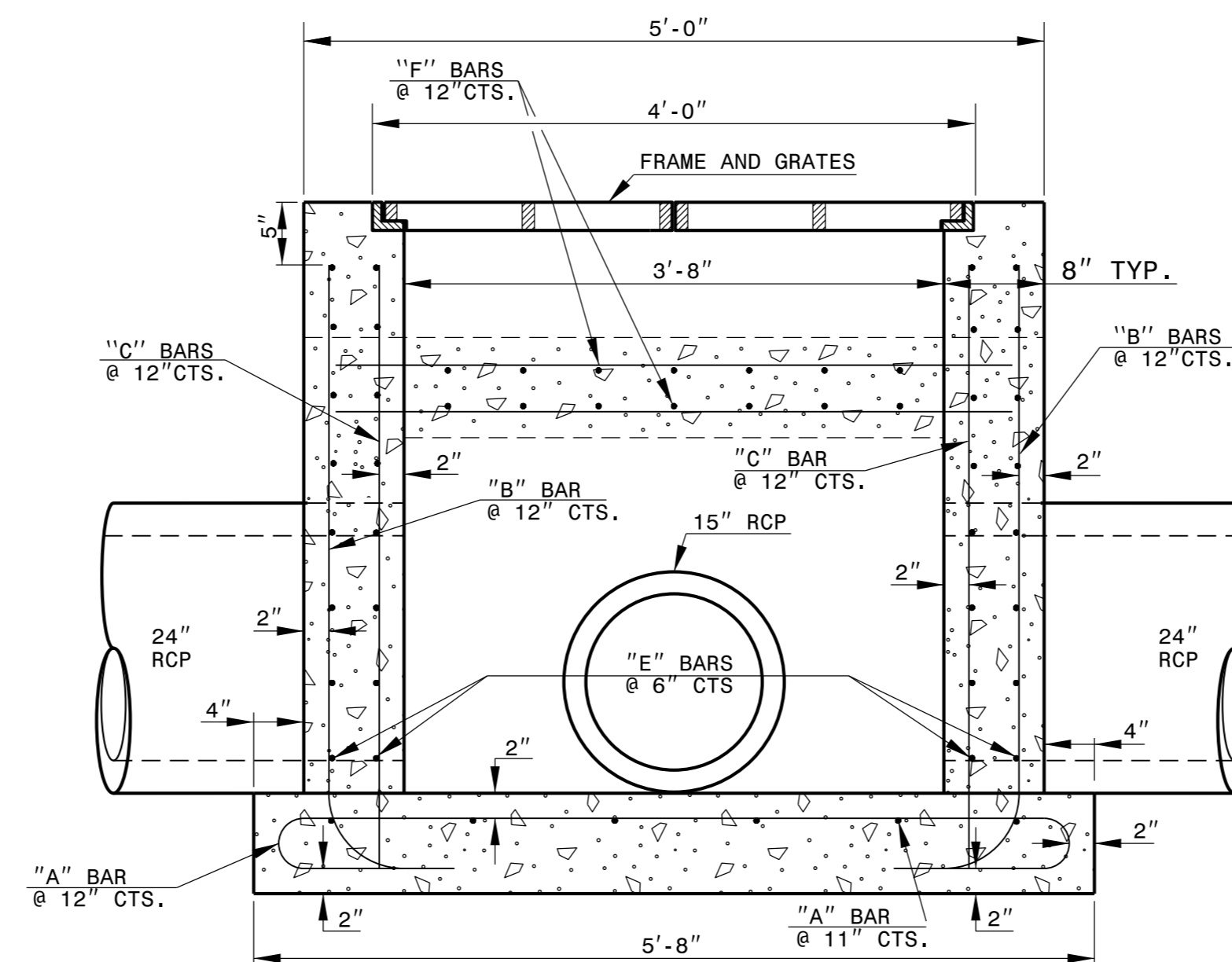
STRAIGHT BARS



CORNER BARS



SECTION X-X



SECTION Y-Y

BASE BARS

"A" BARS

**BILL OF MATERIALS**

BAR	SIZE	LENGTH	QUANTITY	WEIGHT
A	#5	8'-0 1/2"	12	100.6
B	#5	4'-9 1/2"	20	99.6
C	#5	5'-6"	20	114.7
D	#5	2'-9 1/2"	16	46.6
E	#5	4'-8"	68	331.0
F	#5	2'-0"	44	91.8
REINF. STEEL (TOTAL WEIGHT LBS.)				784.3
CONCRETE IN BASE CLASS 'AA' (CUBIC YARDS)				0.79
CONCRETE IN WALLS CLASS 'AA' (CUBIC YARDS)				2.30
CONCRETE TOTAL (CUBIC YARDS)				3.09
CONC. CUBIC YARDS IN WALL/FOOT OF HEIGHT				0.46
LBS. OF REINF. STEEL IN WALL/FOOT OF HEIGHT				128.9

\* PIPE DEDUCTIONS AND INLET OPENING DEDUCTION HAVE BEEN MADE.

- NOTES:
- HORIZONTAL AND VERTICAL DIMENSIONS MAY BE ADJUSTED AS THE FIELD CONDITIONS AND/OR ALTERNATE DESIGN REQUIRE.
  - MAXIMUM HEIGHT FOR THIS STRUCTURE SHALL BE 20'-0".
  - ALL ADJUSTMENTS ARE TO BE MADE AS DIRECTED BY THE ENGINEER.
  - DEPTH OF STEEL GRATE WILL REQUIRE DEEPER SEAT ALONG SHORT WALLS.

9/1/2016



DOCUMENT NOT CONSIDERED FINAL UNLESS ALL SIGNATURES COMPLETED

**CONTRACT STANDARDS AND DEVELOPMENT UNIT**  
Office 919-707-6950 FAX 919-250-4119

**TRAFFIC BEARING DROP INLET TYPE "A"**

ORIGINAL BY: tsspell	DATE: 7-15-08
MODIFIED BY:	DATE:
CHECKED BY:	DATE:
FILE SPEC.: s:tspell/details/840d35_a0011bb.dgn	