


8/17/99

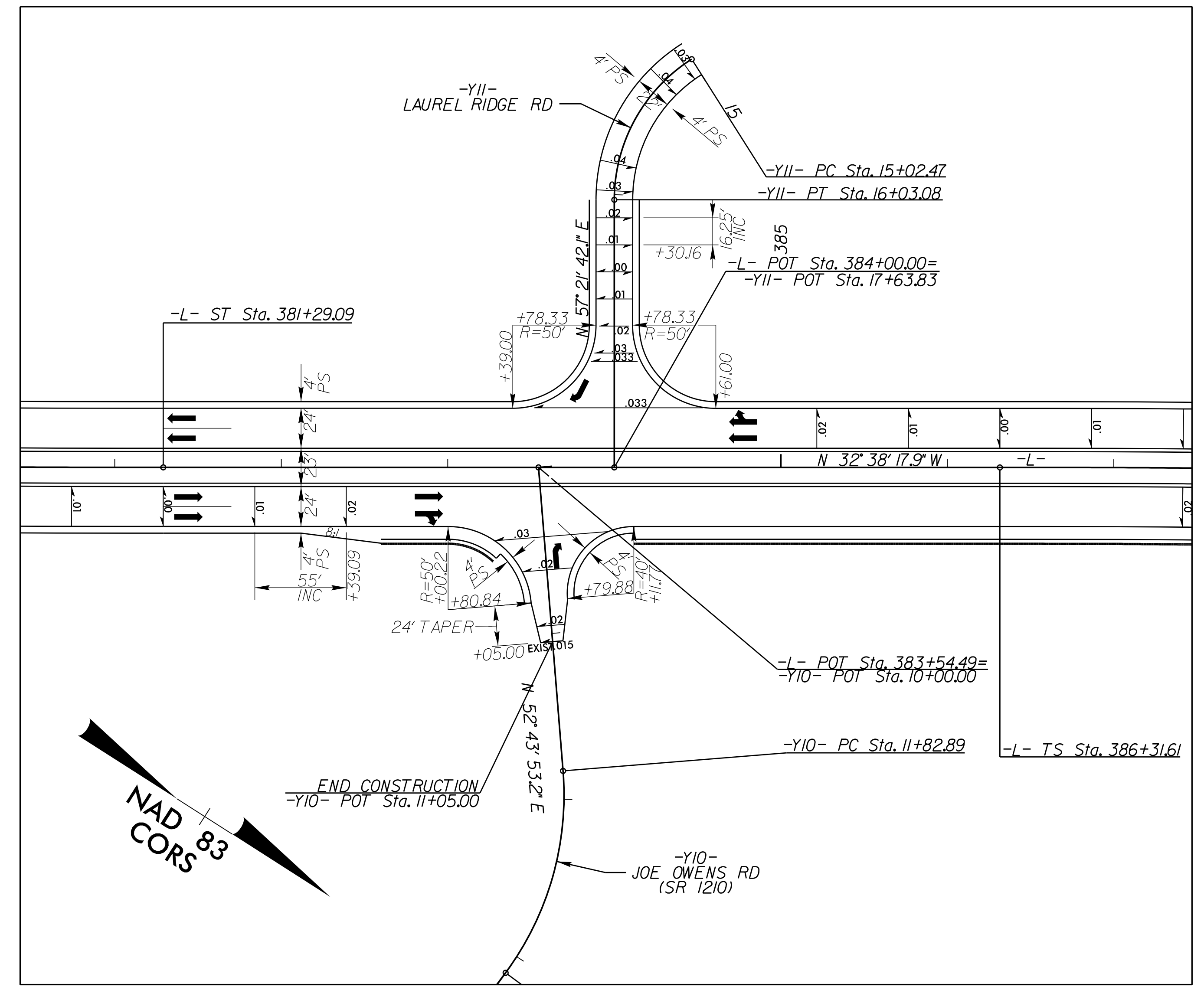
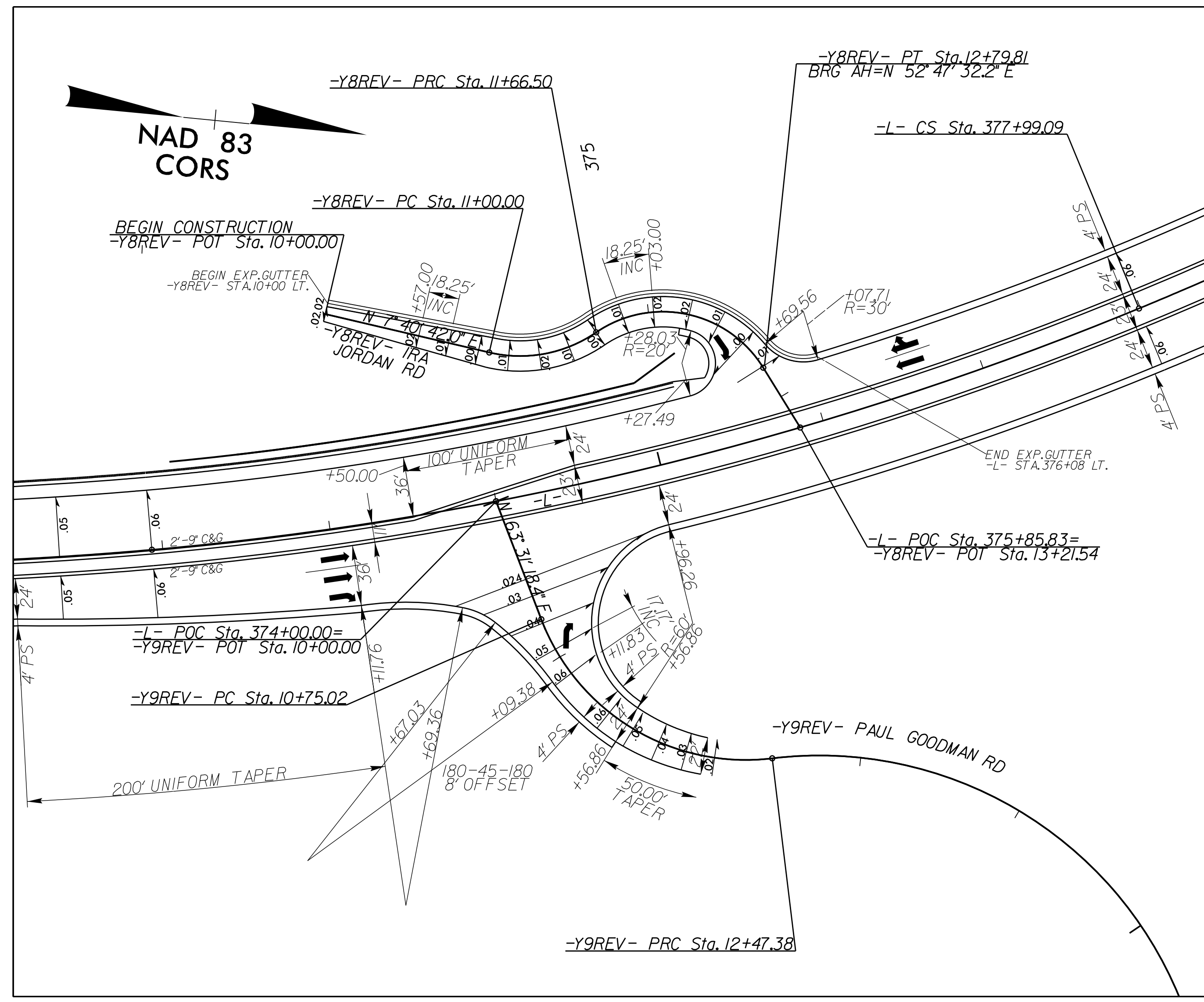
**LOCHNER**  
 H. W. LOCHNER, INC.  
 2840 PLAZA PLACE, SUITE 202  
 RALEIGH, NC 27612  
 (919)571-7111  
 NC License Number F-0159

**HNTB**  
 343 E. SIX FORKS ROAD, SUITE 200  
 RALEIGH, NC 27609  
 NC License Number C-1554

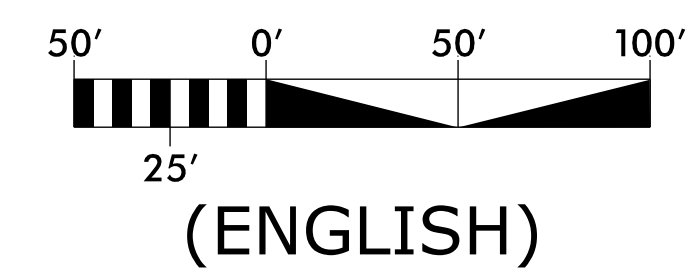
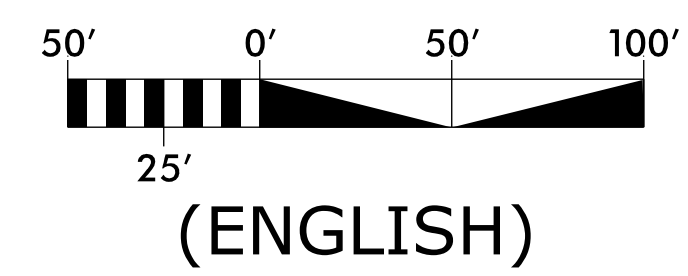
PROJECT REFERENCE NO. R-2915C	SHEET NO. 2B-12
RW SHEET NO.	
ROADWAY DESIGN ENGINEER	
	
9/1/2016	
DOCUMENT NOT CONSIDERED FINAL UNLESS ALL SIGNATURES COMPLETED	

DETAIL SHOWING  
 INTERSECTION OF -L- (US 221) AT  
 -Y8REV- IRA JORDAN ROAD &  
 -Y9REV- PAUL GOODMAN ROAD (SR 1178)

DETAIL SHOWING  
 INTERSECTION OF -L- (US 221) AT  
 -Y10- JOE OWENS ROAD (SR 1210)  
 & -Y11- LAUREL RIDGE ROAD



-L- PIs Sta 370+83.65 PI Sta 374+98.67 $\Delta = 4^\circ 43' 36.8''$ $\Delta = 17^\circ 20' 48.7''$ (LT) $\Theta_s = 4^\circ 43' 36.8''$ $L_s = 330.00'$ $D = 2' 51' 53.2''$ $L = 220.08'$ $T = 605.52'$ $ST = 110.07'$ $T = 305.09'$ $R = 2,000.00'$ $SE = .06$ $Ro = \text{As Shown}$	-Y8REV- PI Sta 11+35.31 PI Sta 12+39.94 $\Delta = 47^\circ 37' 44.8''$ (LT) $\Delta = 92^\circ 44' 35.0''$ (RT) $D = 71^\circ 37' 11.0''$ $D = 81^\circ 51' 04.0''$ $L = 66.50'$ $L = 113.31'$ $T = 35.31'$ $T = 73.43'$ $R = 80.00'$ $R = 70.00'$ $SE = .02$ $SE = .02$ $Ro = \text{As Shown}$ $Ro = \text{As Shown}$	-Y9REV- PI Sta 11+76.52 PI Sta 14+44.41 $\Delta = 75^\circ 58' 03.6''$ (LT) $\Delta = 80^\circ 55' 23.2''$ (RT) $D = 44^\circ 04' 25.2''$ $D = 24^\circ 48' 12.1''$ $L = 172.37'$ $L = 326.26'$ $T = 101.51'$ $T = 197.02'$ $R = 130.00'$ $R = 231.00'$ $SE = .06$ $SE = .06$ $Ro = 97.00'$ $Ro = 109.00'$
--	--	--



SEE SHEET 13 FOR ROADWAY PLAN VIEW

SEE SHEET 14 FOR ROADWAY PLAN VIEW

REVISIONS

01-SEP-2016 13:26  
 R:\Projects\2915C\_rdl\PSH02B-12.dgn  
 \$\$\$\$\$\$