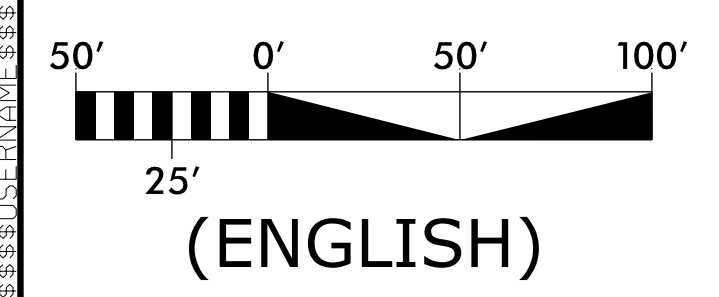
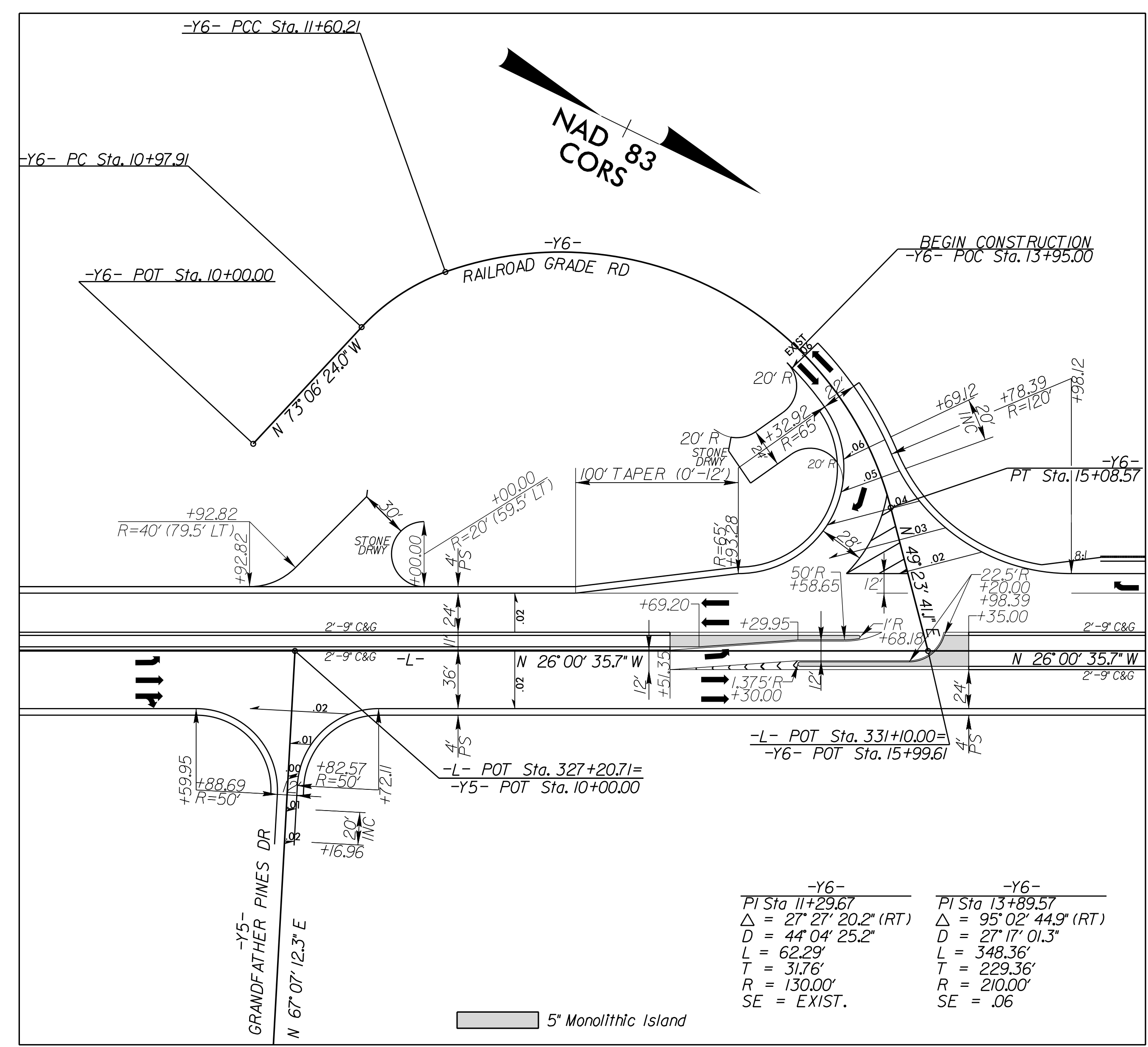


8/17/99

DETAIL SHOWING

INTERSECTION OF -L- (US 221) AT
-Y5- GRANDFATHER PINES DRIVE &
-Y6- RAILROAD GRADE ROAD (SR 1106)



SEE SHEETS 9 & 10 FOR ROADWAY PLAN VIEWS

LOCHNER
H. W. LOCHNER, INC.
2840 PLAZA PLACE, SUITE 202
RALEIGH, NC 27612
(919)571-7111

NC License Number F-0159

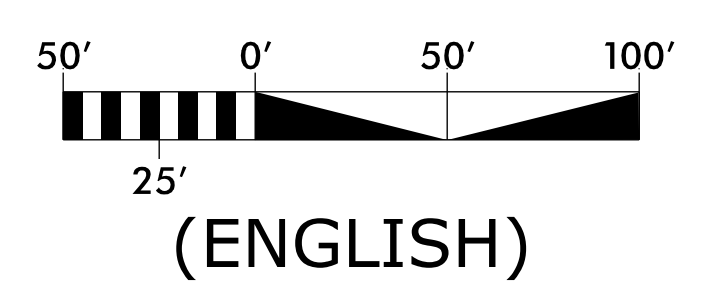
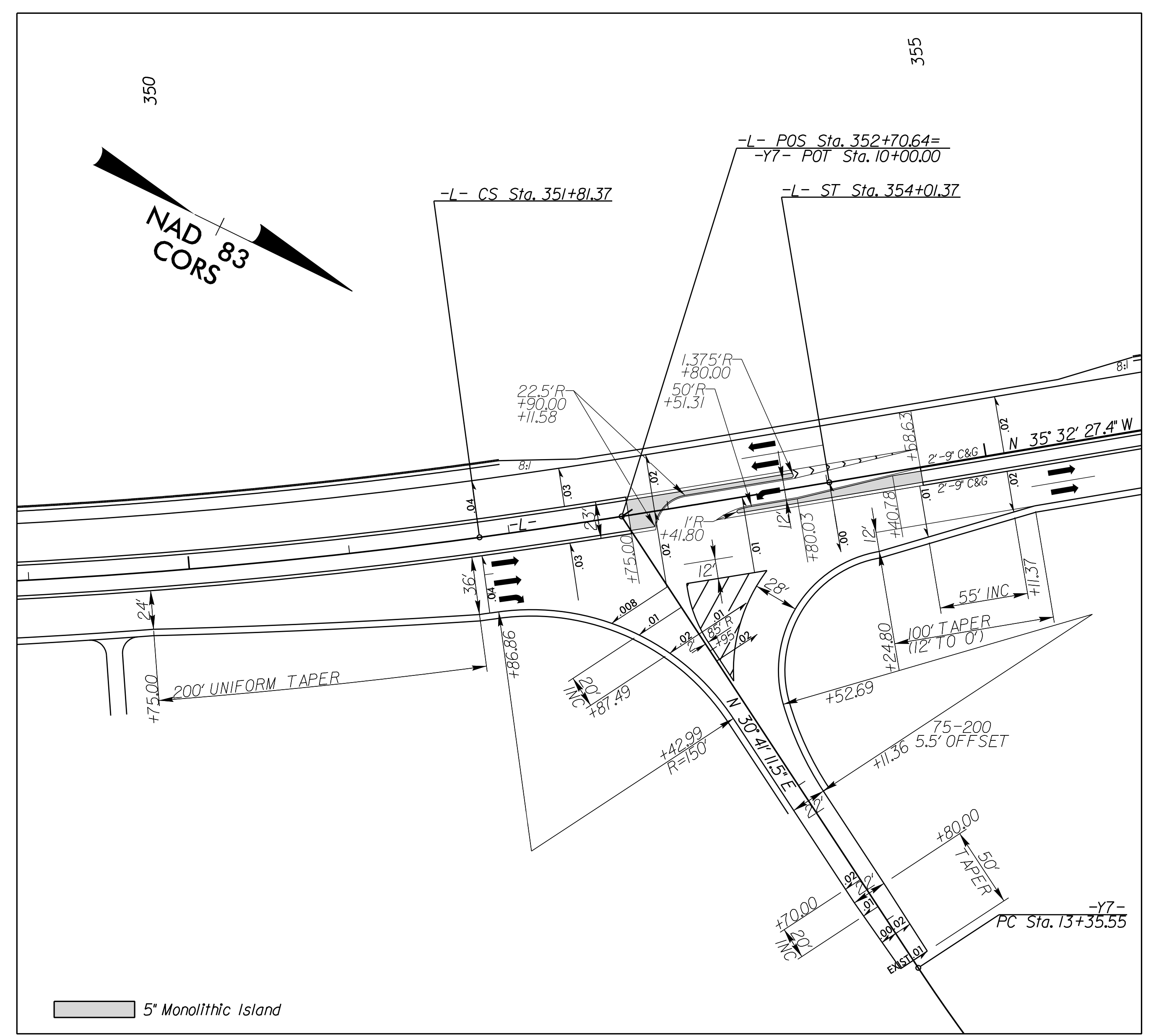
HNTB
343 E. SIX FORKS ROAD, SUITE 200
RALEIGH, NC 27609

NC License Number C-1554

PROJECT REFERENCE NO. R-2915C	SHEET NO. 2B-10
RW SHEET NO.	
ROADWAY DESIGN ENGINEER 9/1/2016	
SEAL 25523 BRUCE K. EASON PROFESSIONAL ENGINEER 9AEO15AD7ACC48E	
DOCUMENT NOT CONSIDERED FINAL UNLESS ALL SIGNATURES COMPLETED	

DETAIL SHOWING

INTERSECTION OF -L- (US 221) AT
-Y7- WATER TANK ROAD (SR 1177)



PIs Sta 347+45.83 PI Sta 350+00.42 PI Sta 352+54.71
 $\Theta_s = 1' 48'' 02.6''$ $\Delta = 5' 55'' 46.5''$ (LT) $\Theta_s = 1' 48'' 02.6''$
 $L_s = 220.00'$ $D = 1' 38'' 13.3''$ $L_s = 220.00'$
 $LT = 146.67'$ $L = 362.22'$ $LT = 146.67'$
 $ST = 73.34'$ $L = 181.27'$ $ST = 73.34'$
 $R = 3,500.00'$
 $SE = .04$
 $Ro = \text{As Shown}$

SEE SHEET 11 FOR ROADWAY PLAN VIEW

01-SEP-2016 13:26
R:\Projects\2915C_rdw\PSH02B-10.dgn
BRUCE K. EASON