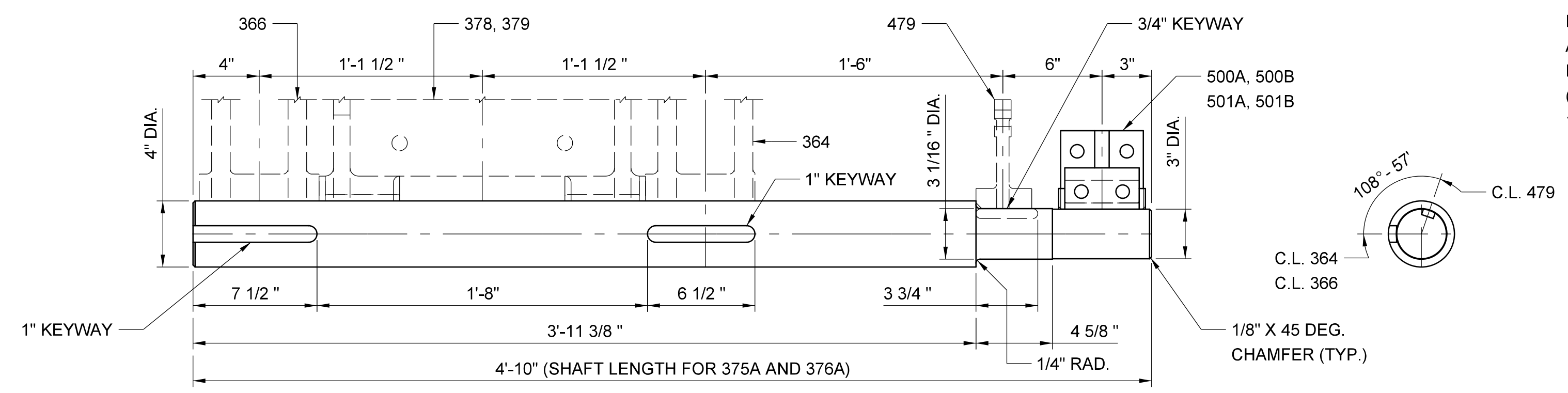


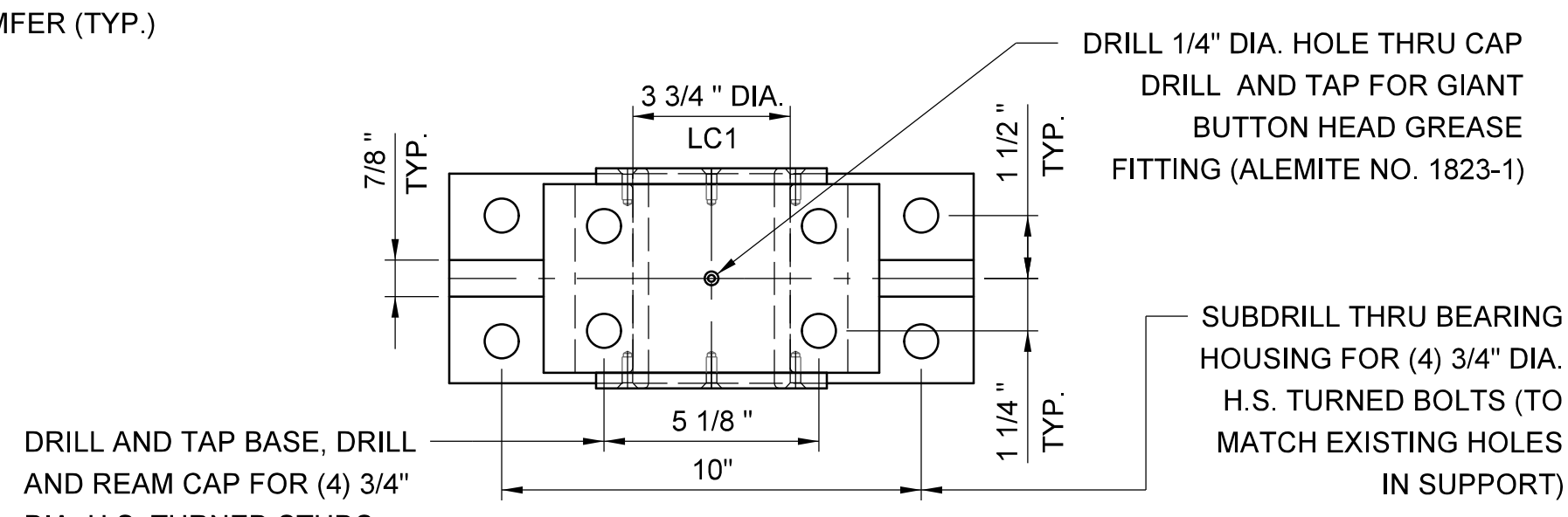
344A / 345A - E.W. CRANK SHAFT

SCALE: 2" = 1'-0"



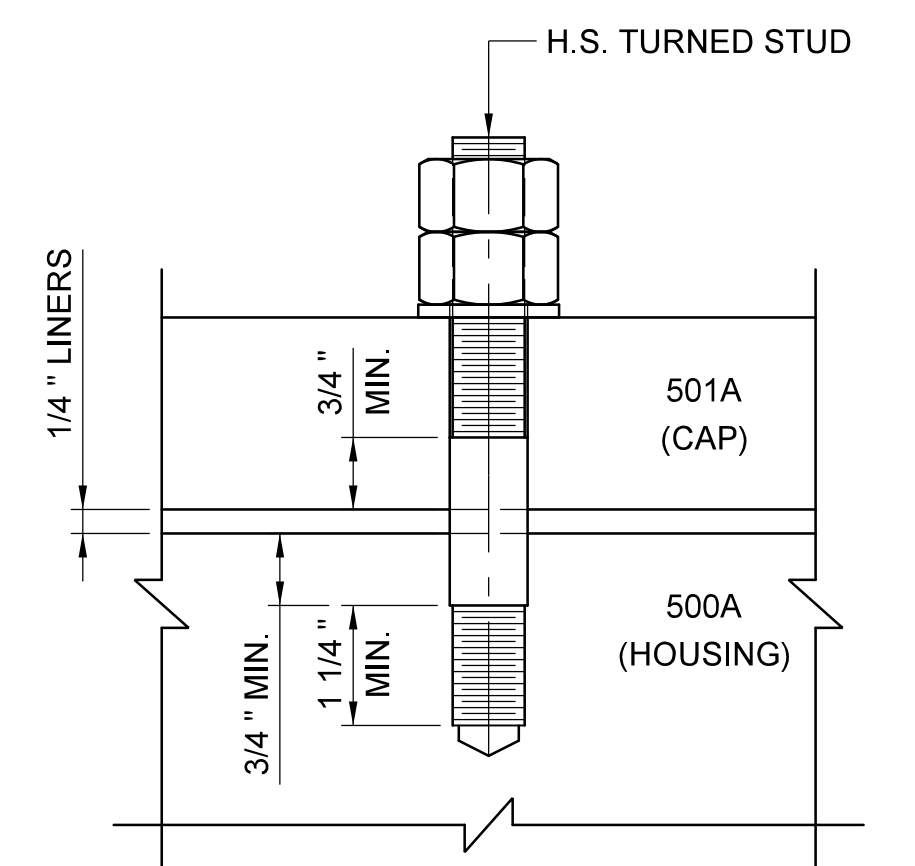
375A/376A - E.W. JACK SHAFT

SCALE: 2" = 1'-0"



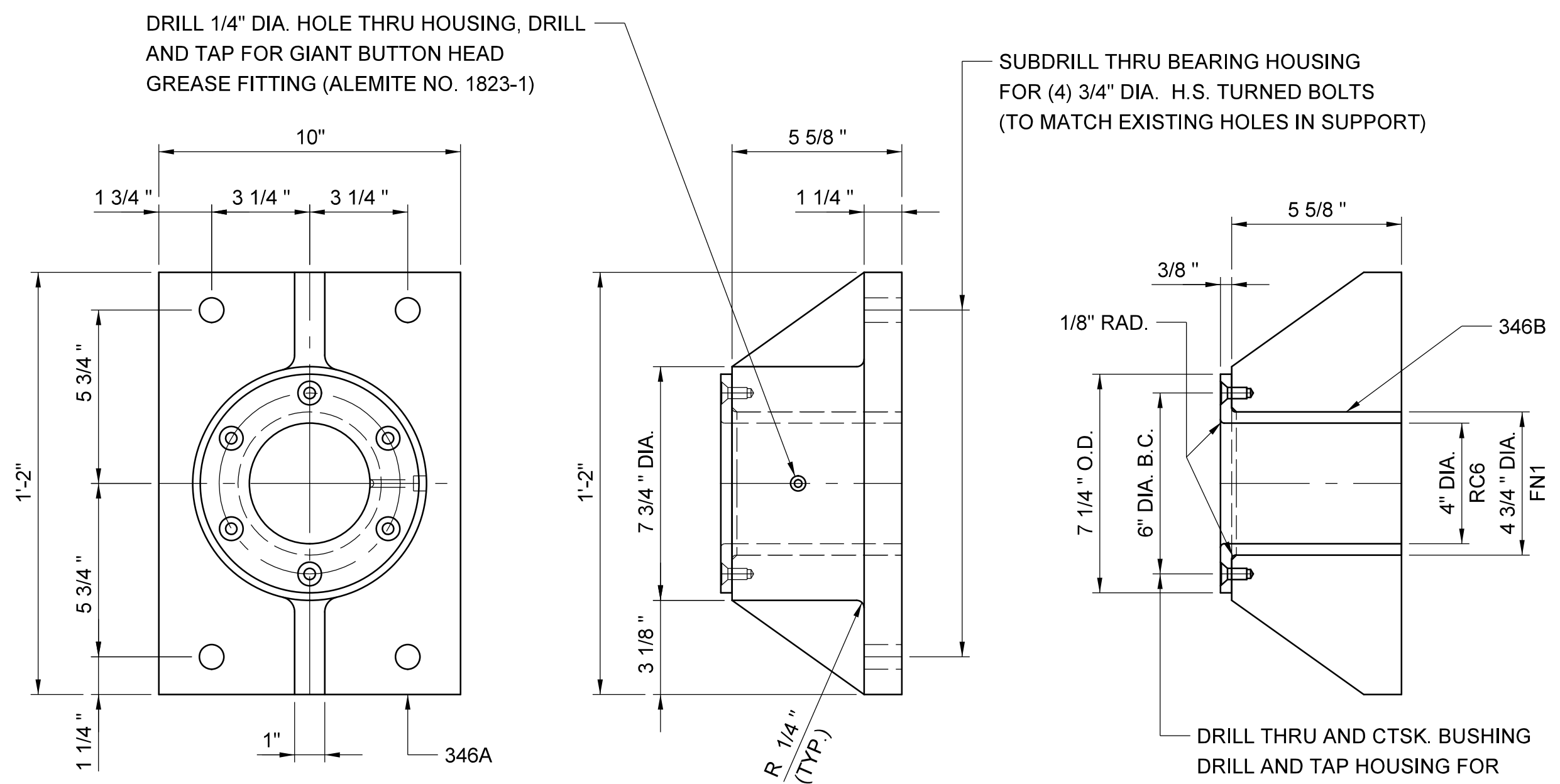
500A / 501A - E.W. JACK SHAFT BEARING ASSEMBLY

SCALE: 3" = 1'-0"



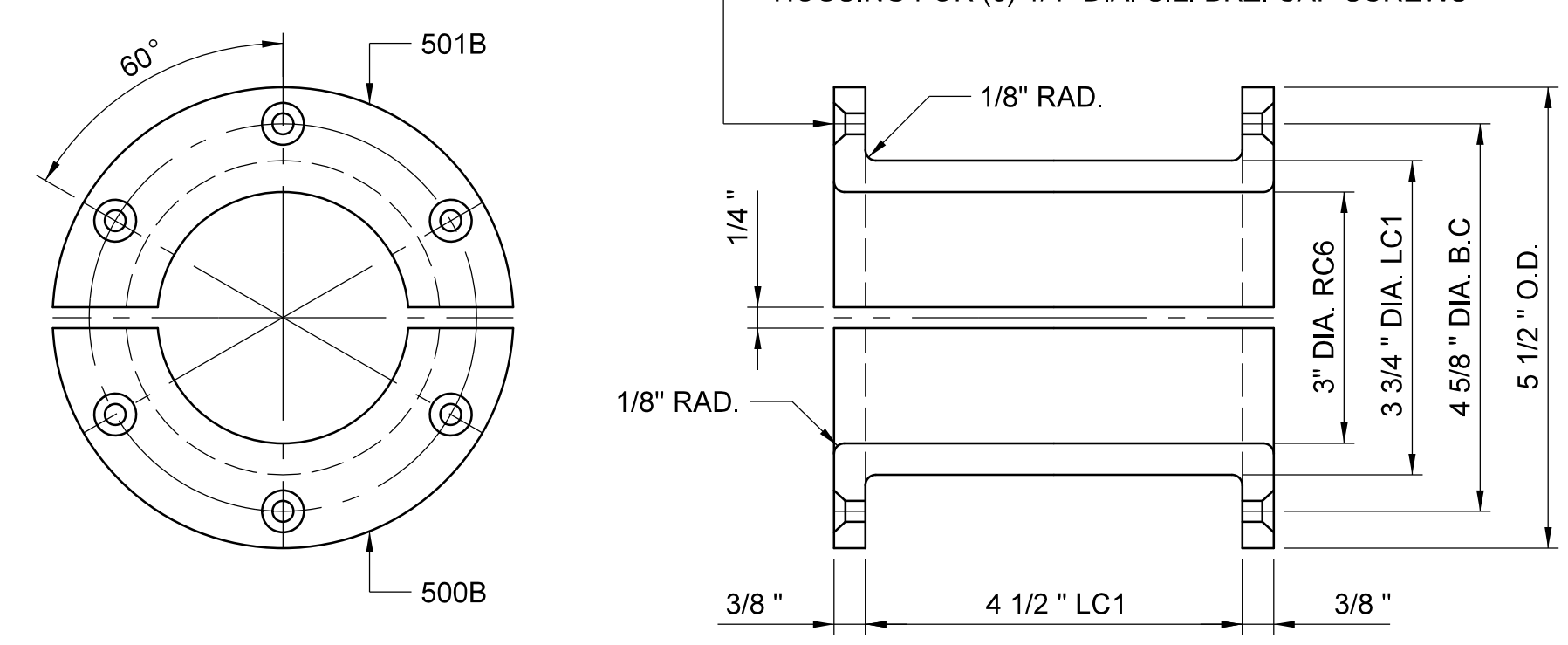
DRILL AND TAP DETAIL I

SCALE: 6" = 1'-0"



346A / 346B - COLLAR BEARING ASSEMBLY

SCALE: 3" = 1'-0"



500B / 501B - BUSHINGS FOR 500A / 501A

SCALE: 6" = 1'-0"

END WEDGE MACHINERY REHABILITATION NOTES:

1. FOR A GENERAL DESCRIPTION OF WORK FOR EACH OF THE COMPONENTS SHOWN ON THIS SHEET, PLEASE REFER TO THE END WEDGE MACHINERY TABLES SHOWN ON SHEET NOS. M-13 AND M-14.
2. E.W. JACK SHAFT BEARING BUSHINGS SHALL BE PROVIDED WITH MACHINED DOUBLE OVAL GREASE GROOVES. FOR GROOVE DETAIL SEE SHEET NO. M-5.
3. COLLAR BEARING BUSHINGS SHALL BE PROVIDED WITH MACHINED DOUBLE OVAL GREASE GROOVES. FOR GROOVE DETAIL SEE SHEET NO. M-5.
4. UNLESS OTHERWISE NOTED, ALL KEYWAYS ON EACH SHAFT SHALL BE IN LINE.
5. COUPLING-C6 OUTER FLANGE DIAMETER IS LARGER THAN THE EXISTING COUPLING OUTER FLANGE DIAMETER. CONTRACTOR TO VERIFY THAT THERE IS SUFFICIENT CLEARANCE SURROUNDING THE COUPLING PRIOR TO ORDERING.

DRAWN BY: JAG/MS DATE: 8/8/2016
 CHECKED BY: GAF/RH DATE: 8/8/2016
 DESIGN ENGINEER OF RECORD: JAG/MS DATE: 8/8/2016

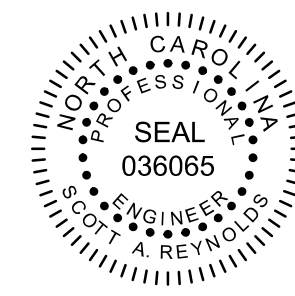
DWG NUMBER 76 TOTAL DWGS 90

DOCUMENT NOT CONSIDERED FINAL UNLESS ALL SIGNATURES COMPLETED

| REVISIONS | | | | | | SHEET NO. M-9 |
|-----------|-----|-------|-----|-----|-------|-------------------------|
| NO. | BY: | DATE: | NO. | BY: | DATE: | |
| 1 | | | 3 | | | TOTAL SHEETS 23 |
| 2 | | | 4 | | | |



DocuSigned by:
Scott Reynolds
BFECS729F8F149D
9/14/2016



PROJECT NO. **B-5936**
TYRRELL COUNTY
 BRIDGE NO: **7**

STATE OF NORTH CAROLINA
 DEPARTMENT OF TRANSPORTATION
 RALEIGH
END WEDGE MACHINERY DETAILS II
ALLIGATOR RIVER SWING SPAN