

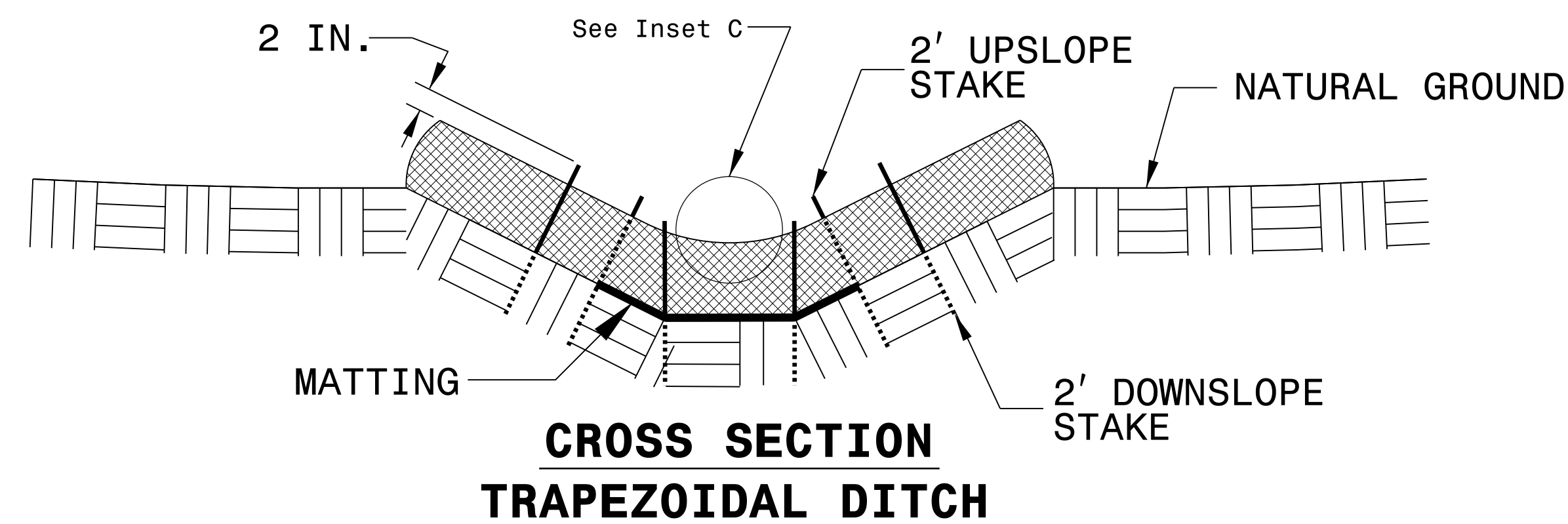
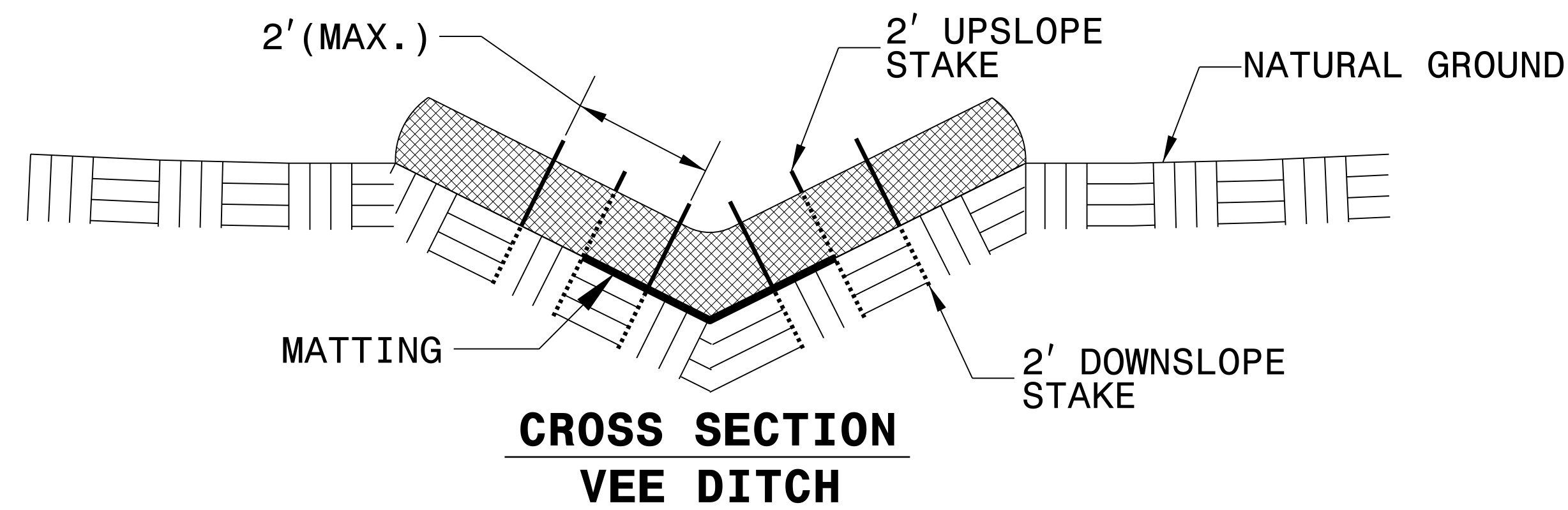
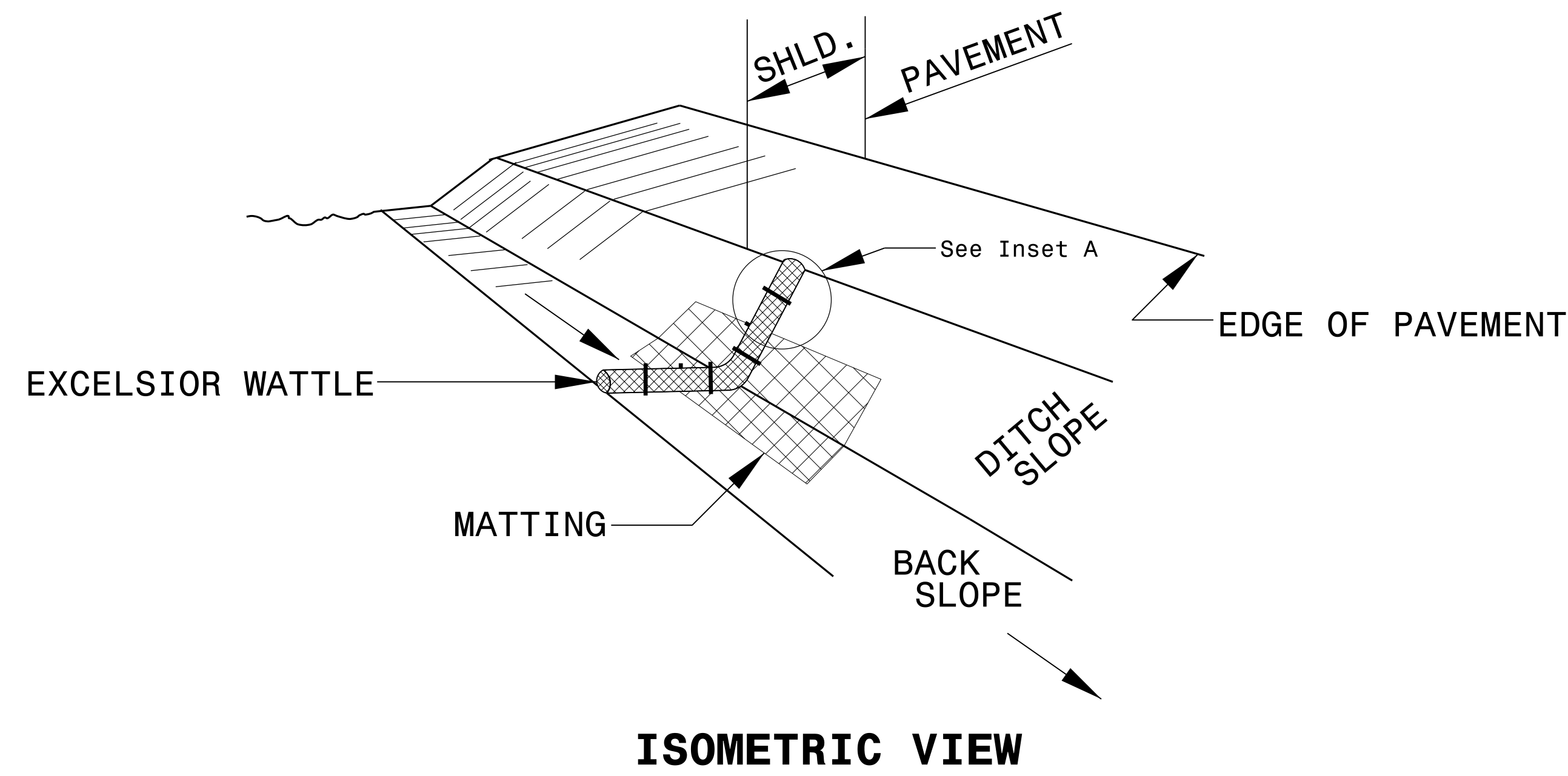
**This electronic collection of documents is provided
for the convenience of the user
and is Not a Certified Document –**

**The documents contained herein were originally issued
and sealed by the individuals whose names and license
numbers appear on each page, on the dates appearing
with their signature on that page.**

**This file or an individual page
shall not be considered a certified document.**

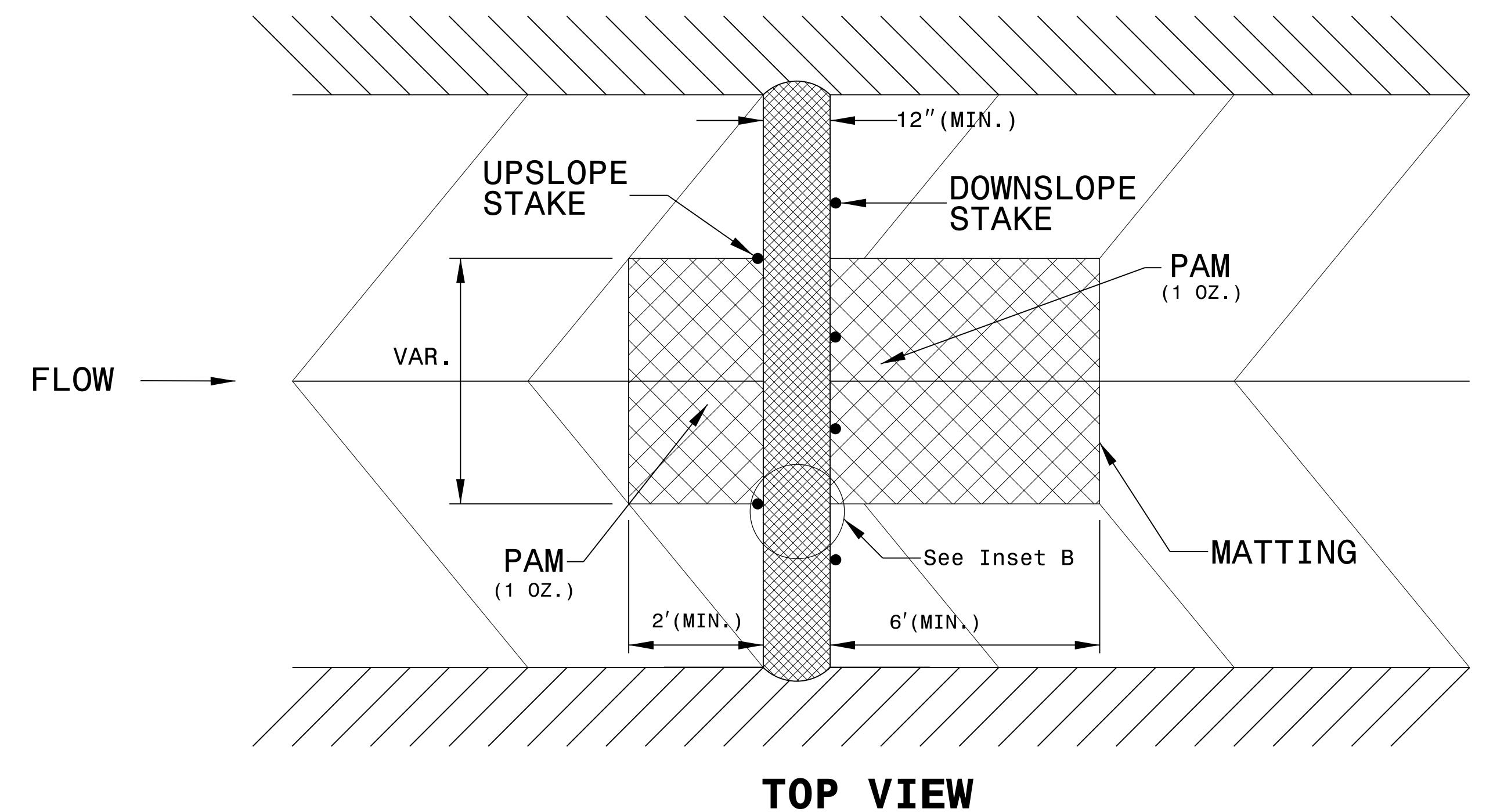
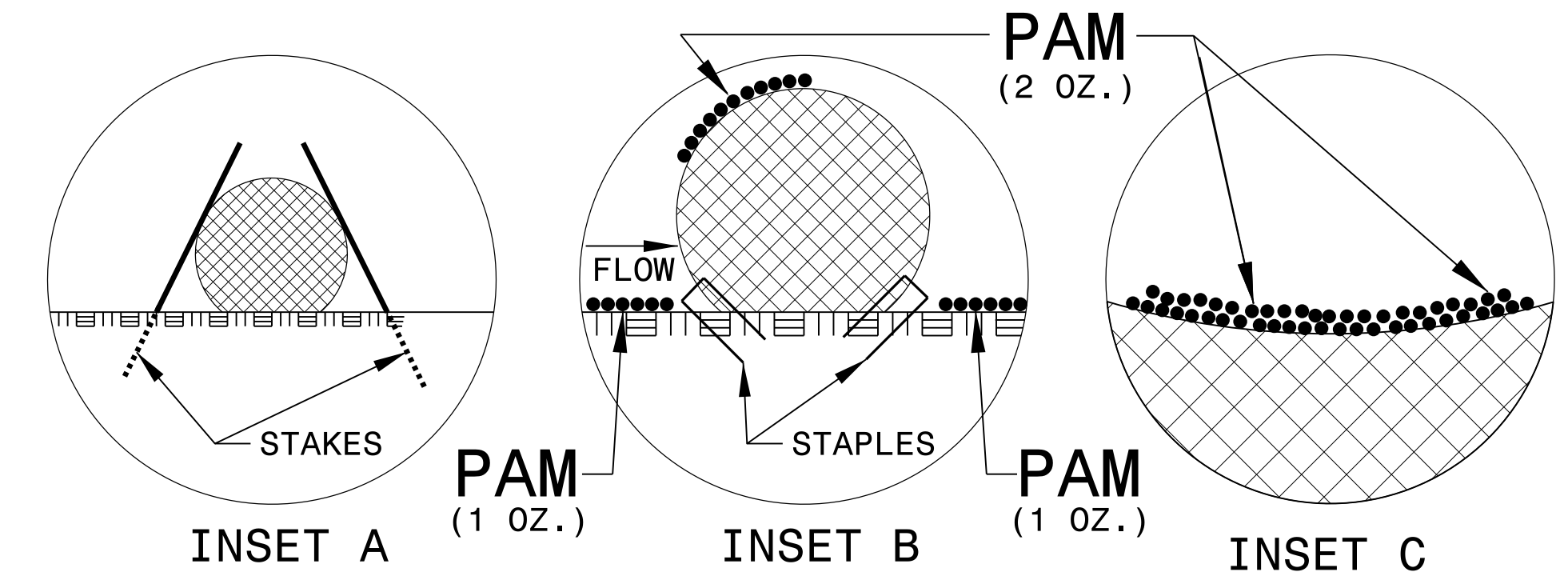
PROJECT REFERENCE NO. B-5546	SHEET NO. EC-02
RW SHEET NO.	
ROADWAY DESIGN ENGINEER	HYDRAULICS ENGINEER

WATTLE WITH POLYACRYLAMIDE (PAM) DETAIL



NOTES:

- USE MINIMUM 12 IN. DIAMETER EXCELSIOR WATTLE.
- USE 2 FT. WOODEN STAKES WITH A 2 IN. BY 2 IN. NOMINAL CROSS SECTION.
- ONLY INSTALL WATTLE(S) TO A HEIGHT IN DITCH SO FLOW WILL NOT WASH AROUND WATTLE AND SCOUR DITCH SLOPES AND AS DIRECTED.
- INSTALL A MINIMUM OF 2 UPSLOPE STAKES AND 4 DOWNSLOPE STAKES AT AN ANGLE TO WEDGE WATTLE TO BOTTOM OF DITCH.
- PROVIDE STAPLES MADE OF 0.125 IN. DIAMETER STEEL WIRE FORMED INTO A U SHAPE NOT LESS THAN 12" IN LENGTH.
- INSTALL STAPLES APPROXIMATELY EVERY 1 LINEAR FOOT ON BOTH SIDES OF WATTLE AND AT EACH END TO SECURE IT TO THE SOIL.
- INSTALL MATTING IN ACCORDANCE WITH SECTION 1631 OF THE STANDARD SPECIFICATIONS.
- PRIOR TO POLYACRYLAMIDE (PAM) APPLICATION, OBTAIN A SOIL SAMPLE FROM PROJECT LOCATION, AND FROM OFFSITE MATERIAL, AND ANALYZE FOR APPROPRIATE PAM FLOCCULANT TO BE APPLIED TO EACH WATTLE.
- INITIALLY APPLY 2 OUNCES OF ANIONIC OR NEUTRALLY CHARGED PAM OVER WATTLE WHERE WATER WILL FLOW AND 1 OUNCE OF PAM ON EACH SIDE OF WATTLE. REAPPLY PAM AFTER EVERY RAINFALL EVENT THAT IS EQUAL TO OR EXCEEDS 0.50 IN.



DIVISION OF HIGHWAYS
STATE OF NORTH CAROLINA

PROJECT REFERENCE NO. <i>B-5546</i>	SHEET NO. <i>EC-3A</i>
ROADWAY DESIGN ENGINEER	HYDRAULICS ENGINEER

SOIL STABILIZATION TIMEFRAMES

<i>SITE DESCRIPTION</i>	<i>STABILIZATION TIME</i>	<i>TIMEFRAME EXCEPTIONS</i>
PERIMETER DIKES, SWALES, DITCHES AND SLOPES	7 DAYS	NONE
HIGH QUALITY WATER (HQW) ZONES	7 DAYS	NONE
SLOPES STEEPER THAN 3:1	7 DAYS	IF SLOPES ARE 10' OR LESS IN LENGTH AND ARE NOT STEEPER THAN 2:1, 14 DAYS ARE ALLOWED.
SLOPES 3:1 OR FLATTER	14 DAYS	7 DAYS FOR SLOPES GREATER THAN 50' IN LENGTH.
ALL OTHER AREAS WITH SLOPES FLATTER THAN 4:1	14 DAYS	NONE, EXCEPT FOR PERIMETERS AND HQW ZONES.

PROJECT REFERENCE NO.	SHEET NO.
B-5546	EC-04/CONST.04
RW SHEET NO.	
ROADWAY DESIGN ENGINEER	HYDRAULICS ENGINEER

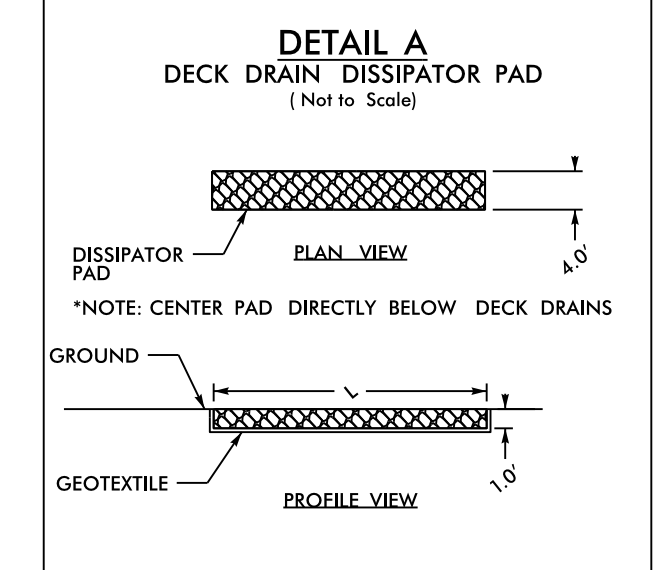
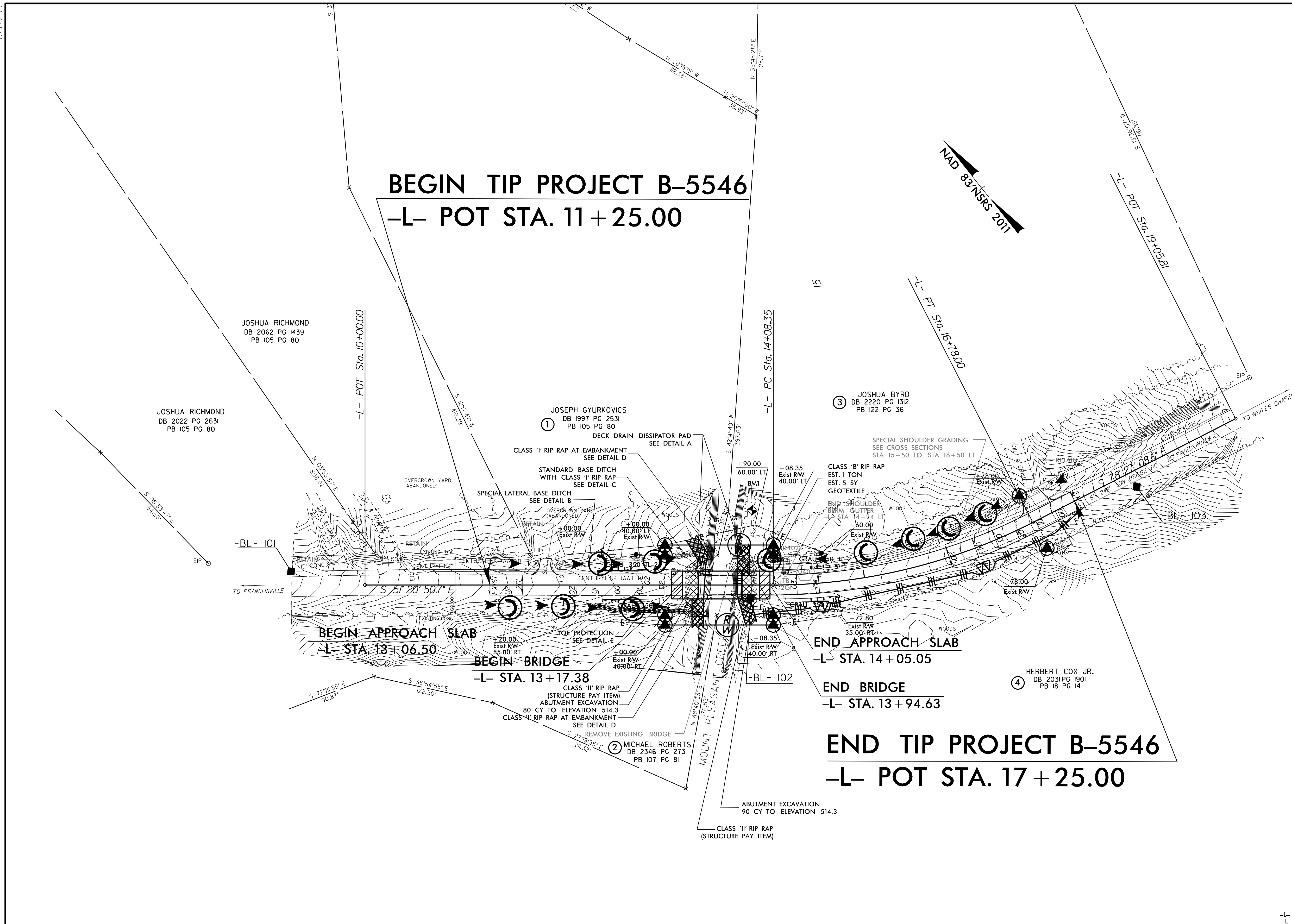
CLEARING AND GRUBBING
EROSION CONTROL FOR
CONSTRUCTION SHEET 04

BEGIN TIP PROJECT B-5546

-L- POT STA. 11 + 25.00

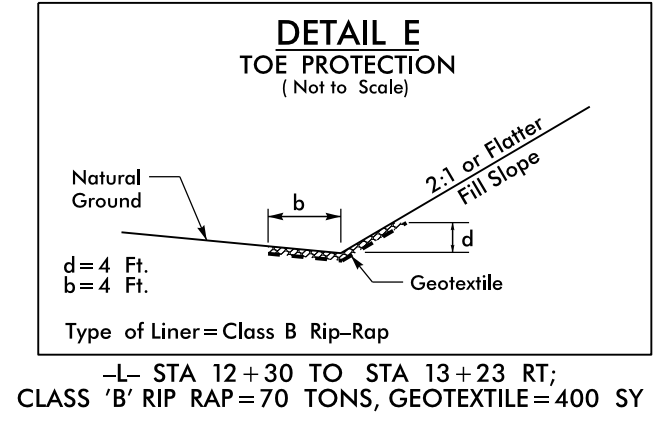
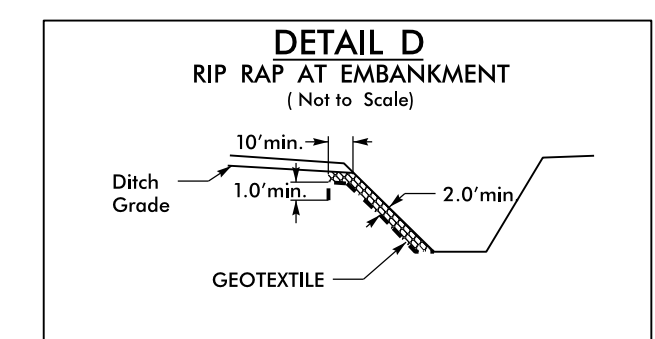
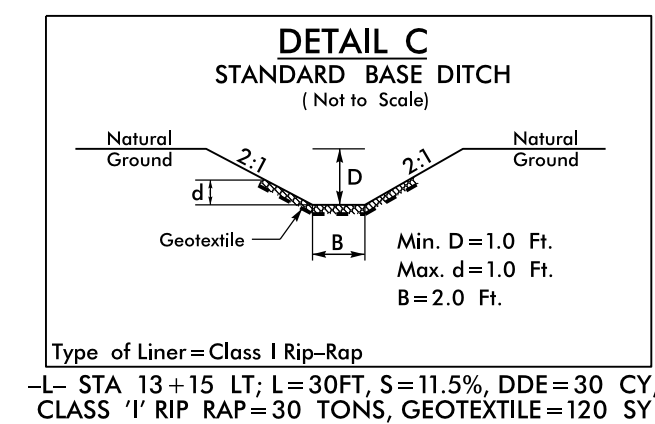
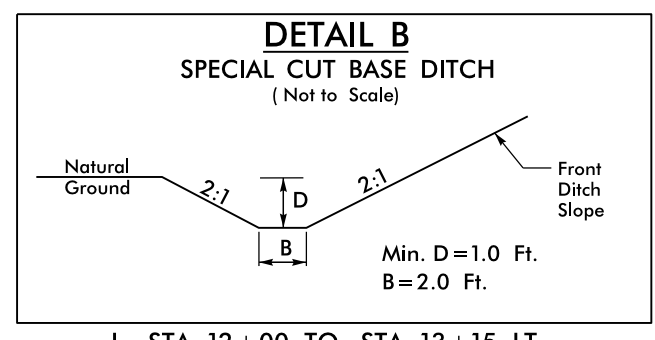
END TIP PROJECT B-5546

-L- POT STA. 17 + 25.00



-L- STA 13 + 23.5 LT; L=17FT,
CLASS 'B' RIP RAP=4 TONS, GEOTEXTILE=80 SY

-L- STA 13 + 76.5 LT; L=15FT,
CLASS 'B' RIP RAP=4 TONS, GEOTEXTILE=70 SY



NOTE:
PLACE TEMPORARY ROCK SEDIMENT DAMS TYPE - B
AND TEMPORARY ROCK SILT CHECKS TYPE - A AT
DRAINAGE OUTLETS.

NOTE:
UTILIZE TEMPORARY SEDIMENT BASIN OR SPECIAL STILLING
BASIN(S) AS STILLING BASIN WHERE APPLICABLE.

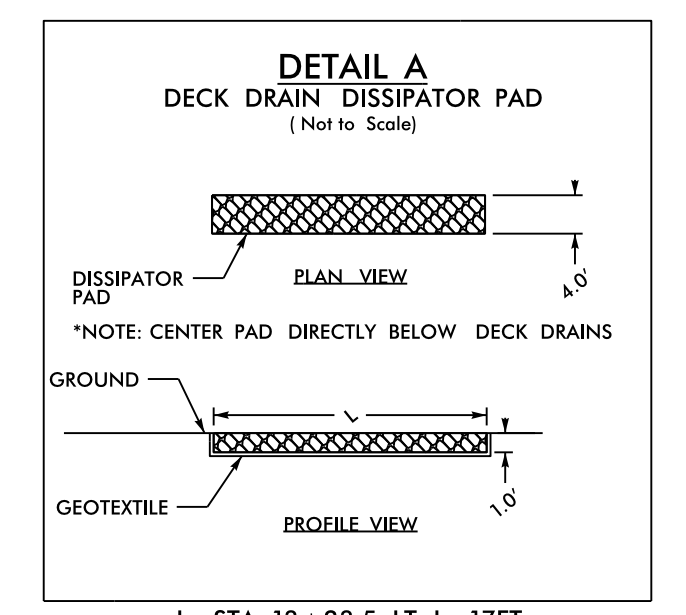
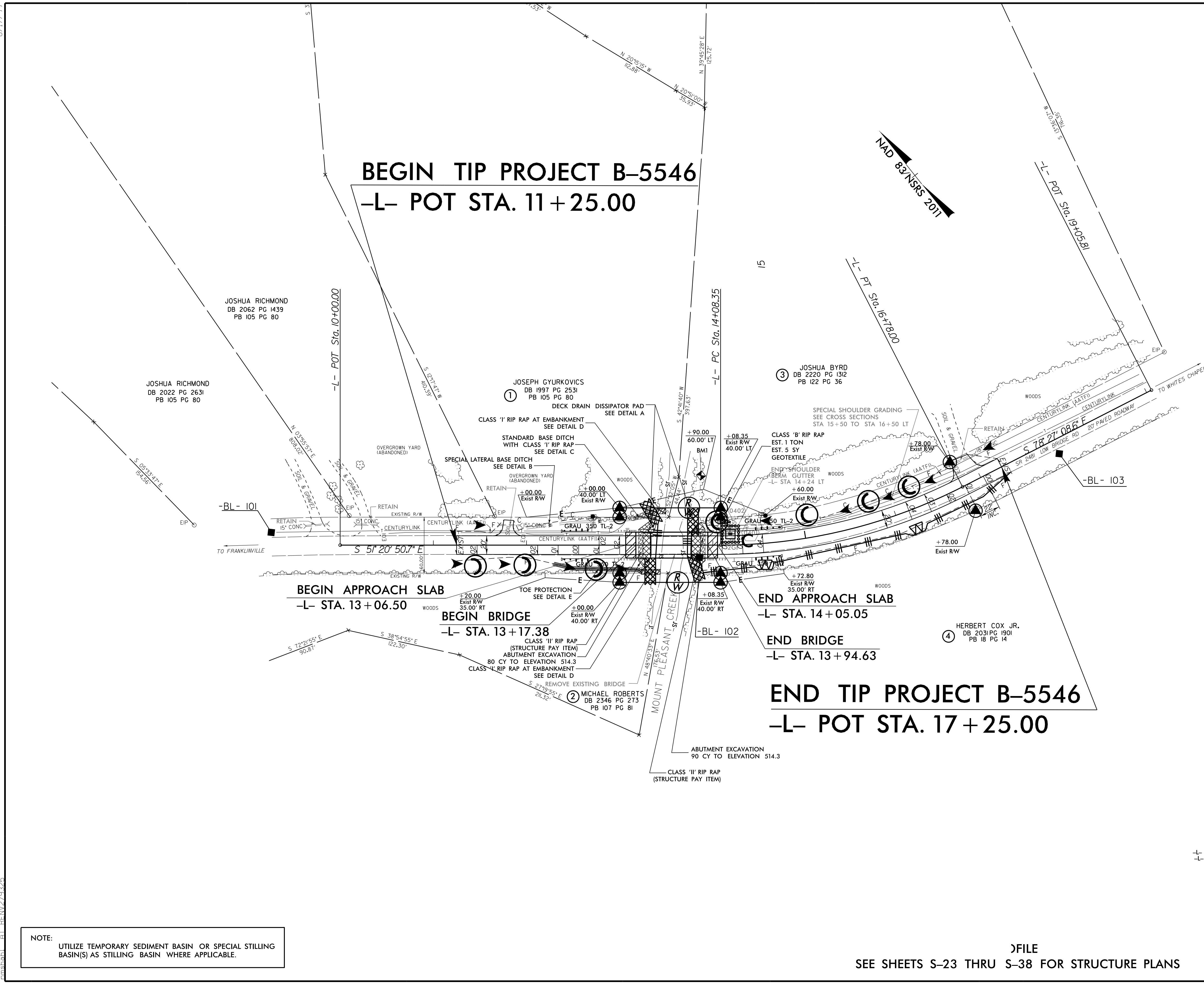
FILE
SEE SHEETS S-23 THRU S-38 FOR STRUCTURE PLANS

8/17/99
 30 JUN 2016 11:42
 R:\Projects\2016\11452\1\Design\B-5546_EC.dsn NMS.dgn
 AT: BRENDA

PROJECT REFERENCE NO.	SHEET NO.
B-5546	EC-05/CONST.4
RW SHEET NO.	
ROADWAY DESIGN ENGINEER	HYDRAULICS ENGINEER

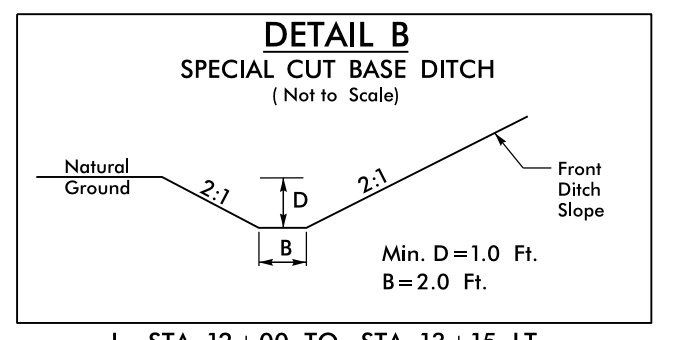
BEGIN TIP PROJECT B-5546
-L- POT STA. 11 + 25.00

END TIP PROJECT B-5546
-L- POT STA. 17 + 25.00

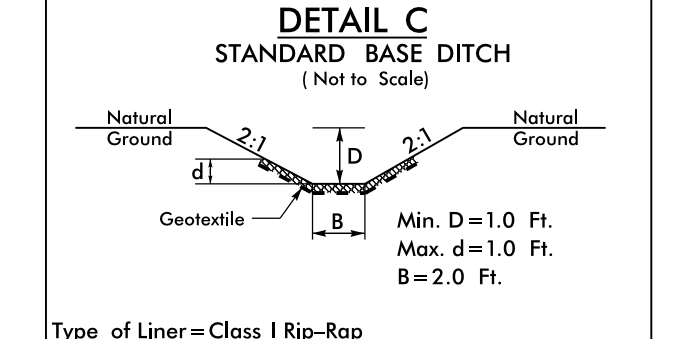


-L- STA 13 + 23.5 LT; L=17FT,
 CLASS 'B' RIP RAP=4 TONS, GEOTEXTILE=80 SY

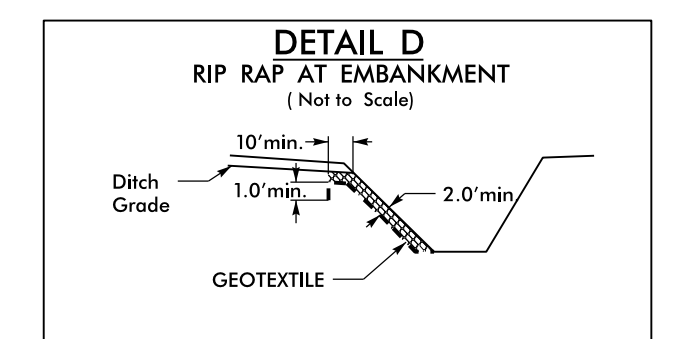
-L- STA 13 + 76.5 LT; L=15FT,
 CLASS 'B' RIP RAP=4 TONS, GEOTEXTILE=70 SY



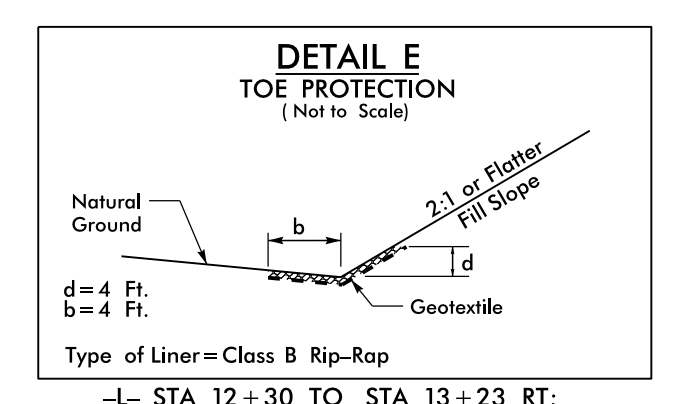
-L- STA 12 + 00 TO STA 13 + 15 LT



Type of Liner=Class I Rip-Rap
 -L- STA 13 + 15 LT; L=30FT, S=11.5%, DDE=30 CY,
 CLASS 'I' RIP RAP=30 TONS, GEOTEXTILE=120 SY



-L- STA 13 + 23 RT; CLASS 'I' RIP RAP=15 TONS, GEOTEXTILE=90 SY
 -L- STA 13 + 40 LT; CLASS 'I' RIP RAP=7 TONS, GEOTEXTILE=50 SY



Type of Liner=Class B Rip-Rap
 -L- STA 12 + 30 TO STA 13 + 23 RT;
 CLASS 'B' RIP RAP=70 TONS, GEOTEXTILE=400 SY

NOTE:
 UTILIZE TEMPORARY SEDIMENT BASIN OR SPECIAL STILLING BASIN(S) AS STILLING BASIN WHERE APPLICABLE.

FILE
 SEE SHEETS S-23 THRU S-38 FOR STRUCTURE PLANS

8/17/99
 30 JUN 2016 11:53
 C:\Users\jrm\Documents\Design\B-5546_EC.dsn NMS.dgn
 AT: BREN275125