

**This electronic collection of documents is provided  
for the convenience of the user  
and is Not a Certified Document –**

**The documents contained herein were originally issued  
and sealed by the individuals whose names and license  
numbers appear on each page, on the dates appearing  
with their signature on that page.**

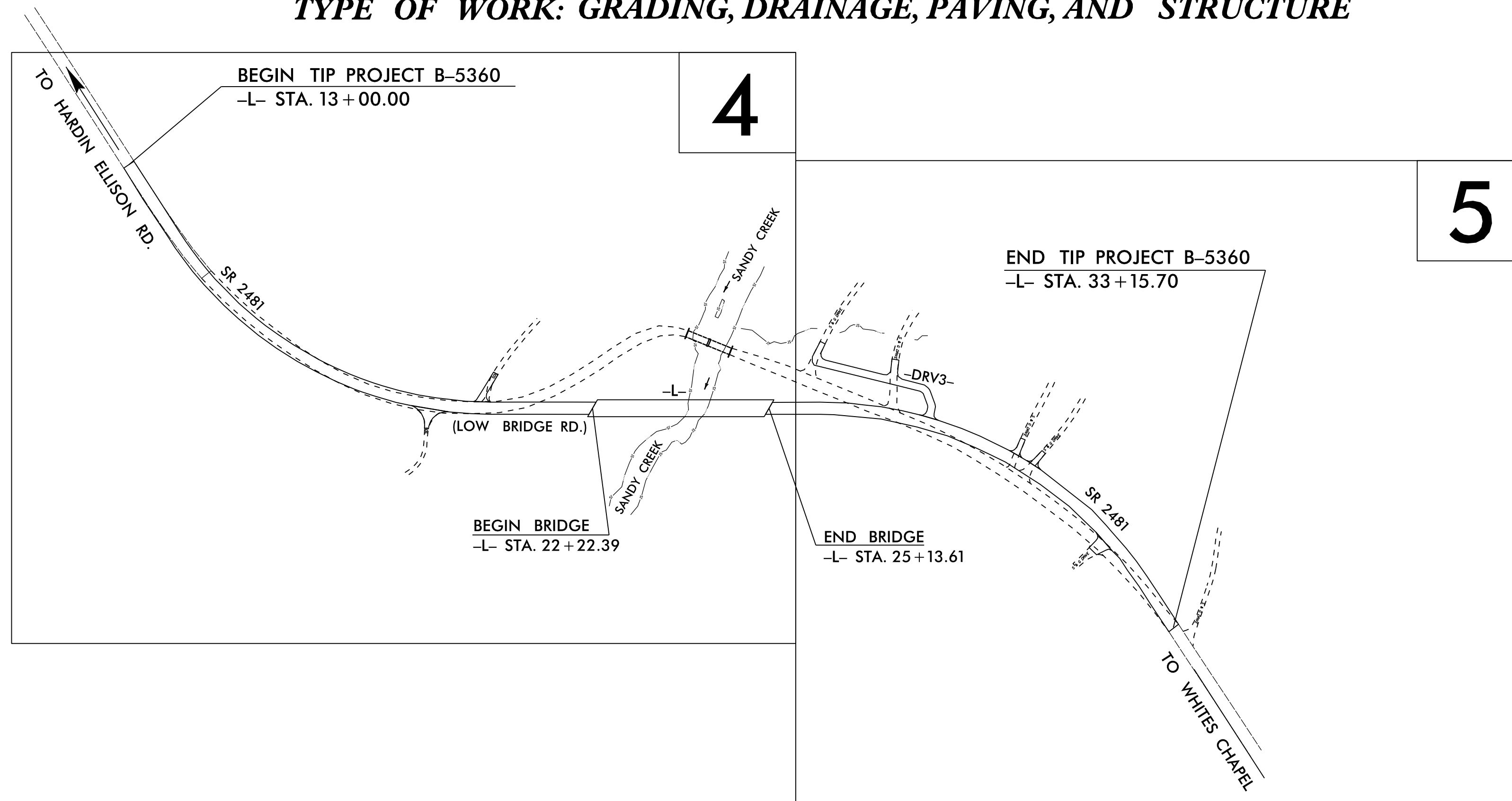
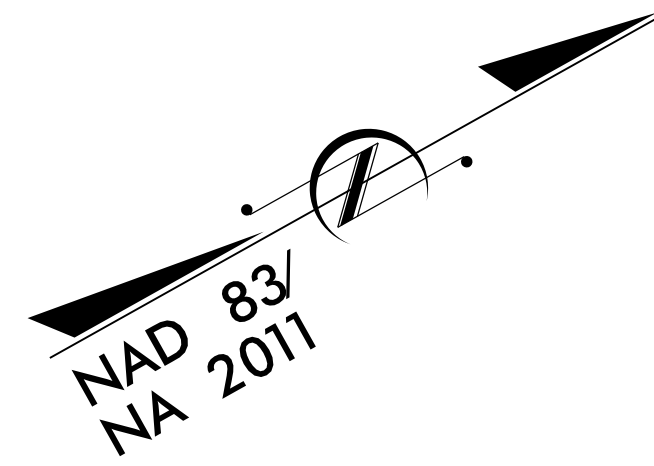
**This file or an individual page  
shall not be considered a certified document.**

**TIP PROJECT: B-5360**

STATE OF NORTH CAROLINA  
 DIVISION OF HIGHWAYS  
 PLAN FOR PROPOSED  
 HIGHWAY EROSION CONTROL  
**RANDOLPH COUNTY**

LOCATION: BRIDGE NO 374 OVER SANDY CREEK  
 ON SR 2481 (LOW BRIDGE RD.)

TYPE OF WORK: GRADING, DRAINAGE, PAVING, AND STRUCTURE



STATE	STATE PROJECT REFERENCE NO.	SHEET NO.	TOTAL SHEETS
N.C.	B-5360	EC-1	
STATE PROJ. NO.	F.A. PROJ. NO.	DESCRIPTION	

**EROSION AND SEDIMENT CONTROL MEASURES**

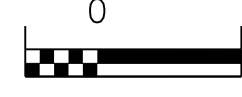
Std. #	Description	Symbol
1630.03	Temporary Silt Ditch	TD
1630.05	Temporary Diversion	TD
1605.01	Temporary Silt Fence	III III III
1606.01	Special Sediment Control Fence	X X X X X X
1622.01	Temporary Berms and Slope Drains	TD
1650.02	Silt Basin Type B	SB
1633.01	Temporary Rock Silt Check Type-A	RS
	Temporary Rock Silt Check Type-A with Matting and Polyacrylamide (PAM)	RS
1633.02	Temporary Rock Silt Check Type-B	RS
	Wattle/Coir Fiber Wattle	WF
	Wattle/Coir Fiber Wattle with Polyacrylamide (PAM)	WF
1634.01	Temporary Rock Sediment Dam Type-A	RD
1634.02	Temporary Rock Sediment Dam Type-B	RD
1635.01	Rock Pipe Inlet Sediment Trap Type-A	RPI
1635.02	Rock Pipe Inlet Sediment Trap Type-B	RPI
1630.04	Stilling Basin	SB
1630.06	Special Stilling Basin	SB
	Rock Inlet Sediment Trap:	
1632.01	Type A	A
1632.02	Type B	B
1632.03	Type C	C
	Skimmer Basin	SK
	Tiered Skimmer Basin	SK
	Infiltration Basin	IB

THIS PROJECT CONTAINS  
 EROSION CONTROL PLANS  
 FOR CLEARING AND  
 GRUBBING PHASE OF  
 CONSTRUCTION.

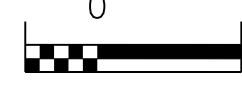
**GRAPHIC SCALE**



PLANS



PROFILE (HORIZONTAL)



PROFILE (VERTICAL)

ROADSIDE ENVIRONMENTAL UNIT  
 DIVISION OF HIGHWAYS  
 STATE OF NORTH CAROLINA

THESE EROSION AND SEDIMENT CONTROL PLANS COMPLY  
 WITH THE REGULATIONS SET FORTH BY THE  
 NCG-010000 GENERAL CONSTRUCTION PERMIT EFFECTIVE AUGUST 3, 2011  
 ISSUED BY THE NORTH CAROLINA DEPARTMENT OF ENVIRONMENT AND  
 NATURAL RESOURCES DIVISION OF WATER QUALITY.

Prepared in the Office of:  
**ROADSIDE ENVIRONMENTAL UNIT**  
 1 South Wilmington St.  
 Raleigh, NC 27611  
**2012 STANDARD SPECIFICATIONS**

Designed by:  
**Noelle Ring** 3456  
 NAME LEVEL III CERTIFICATION NO.

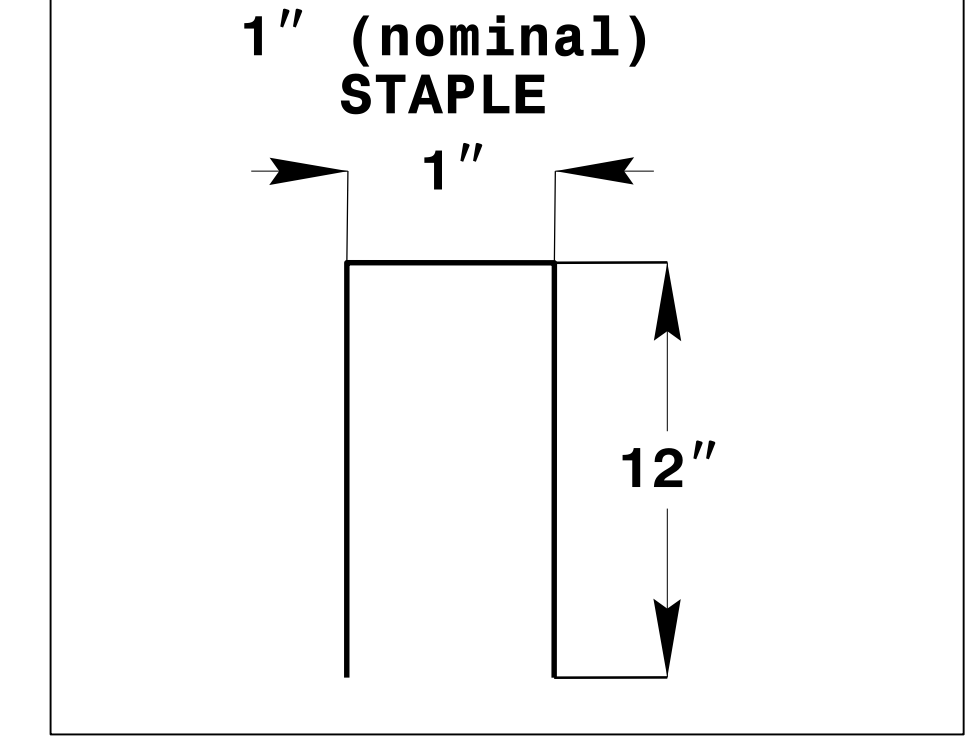
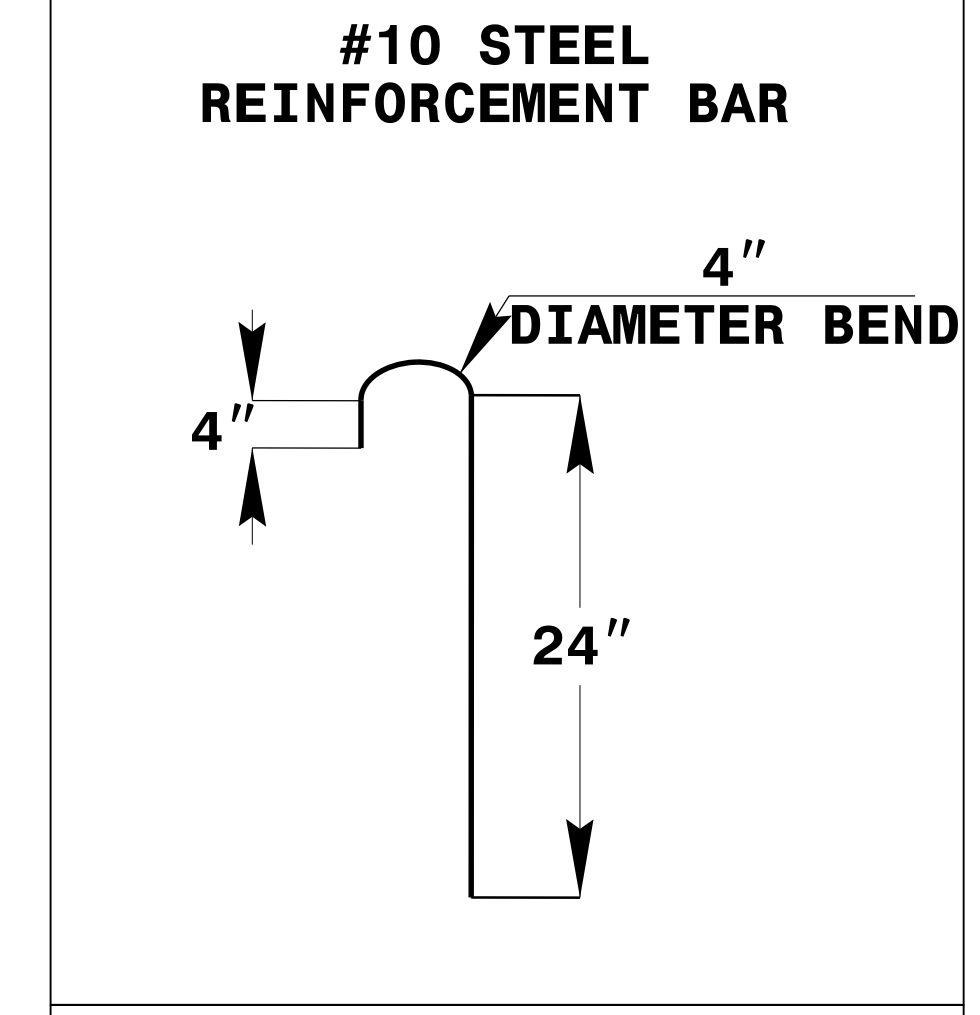
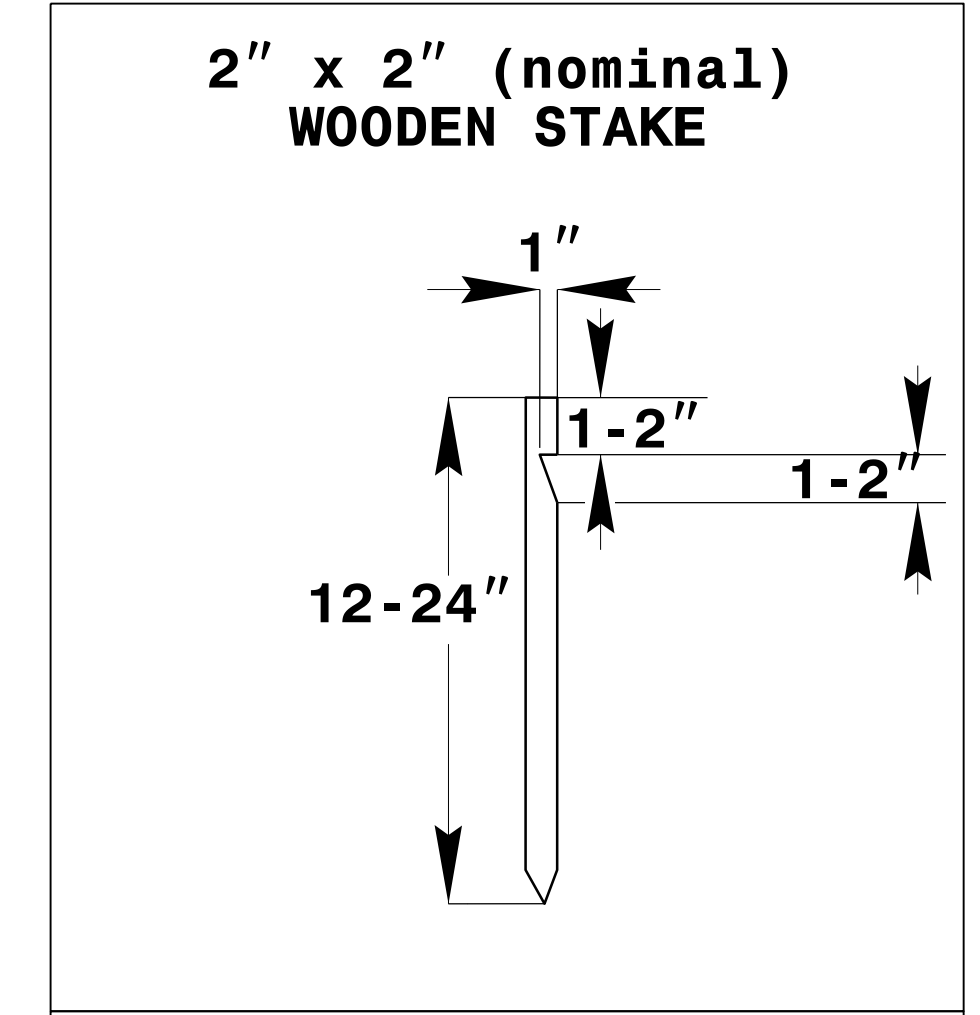
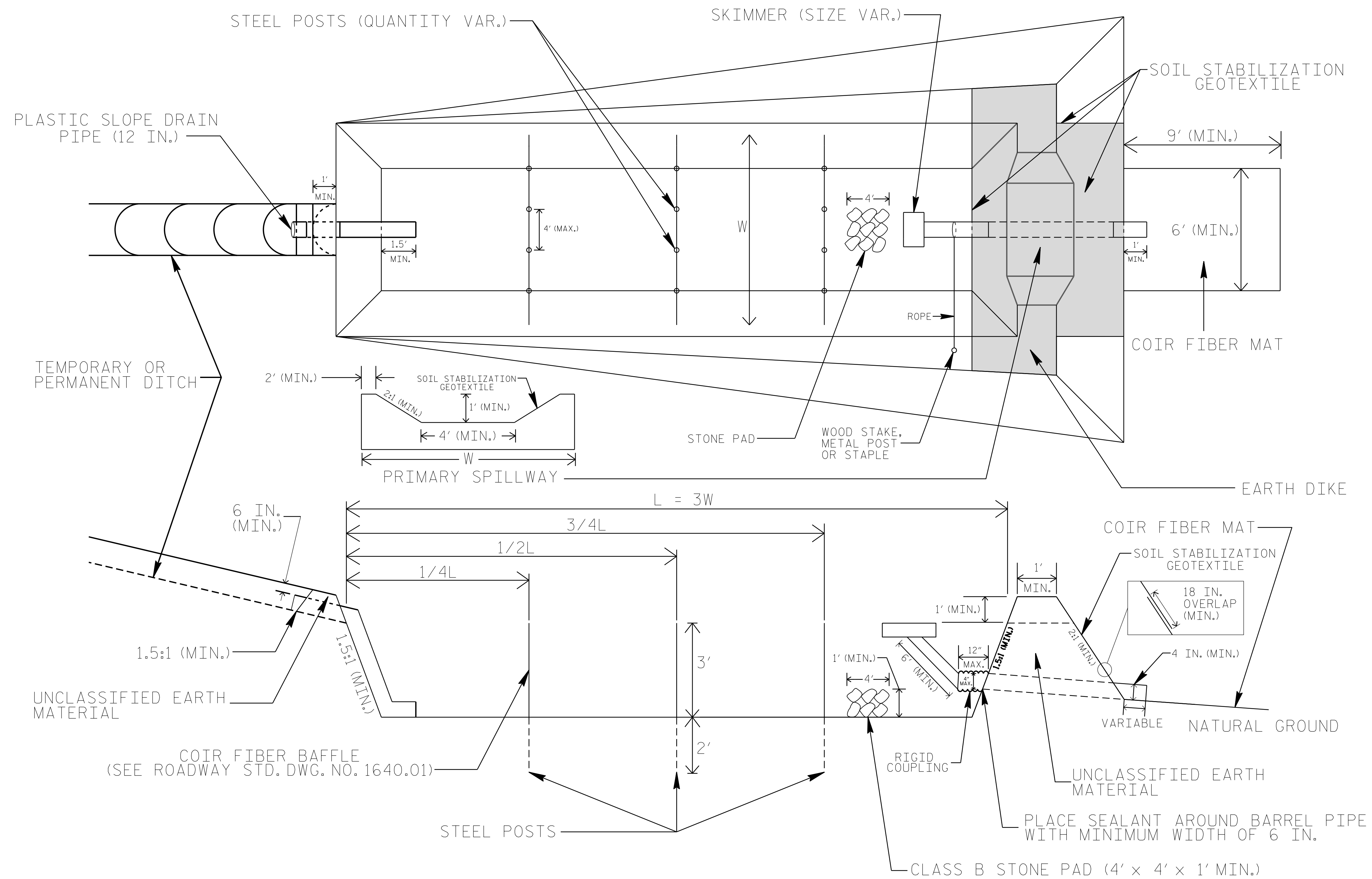
**Roadway Standard Drawings**

The following roadway english standards as appear in "Roadway Standard Drawings"- Roadway Design Unit - N. C. Department of Transportation - Raleigh, N. C., dated January 2012 and the latest revision thereto are applicable to this project and by reference hereby are considered a part of these plans.

1604.01 Railroad Erosion Control Detail	1632.01 Rock Inlet Sediment Trap Type A
1605.01 Temporary Silt Fence	1632.02 Rock Inlet Sediment Trap Type B
1606.01 Special Sediment Control Fence	1632.03 Rock Inlet Sediment Trap Type C
1607.01 Gravel Construction Entrance	1633.01 Temporary Rock Silt Check Type A
1622.01 Temporary Berms and Slope Drains	1633.02 Temporary Rock Silt Check Type B
1630.01 Riser Basin	1634.01 Temporary Rock Sediment Dam Type A
1630.02 Silt Basin Type B	1634.02 Temporary Rock Sediment Dam Type B
1630.03 Temporary Silt Ditch	1635.01 Rock Pipe Inlet Sediment Trap Type A
1630.04 Stilling Basin	1635.02 Rock Pipe Inlet Sediment Trap Type B
1630.05 Temporary Diversion	1640.01 Coir Fiber Baffle
1630.06 Special Stilling Basin	1645.01 Temporary Stream Crossing
1631.01 Matting Installation	

PROJECT REFERENCE NO. B-5360	SHEET NO. EC-02
RW SHEET NO.	
ROADWAY DESIGN ENGINEER	HYDRAULICS ENGINEER

# SKIMMER BASIN WITH BAFFLES DETAIL



## COIR FIBER MAT ANCHOR OPTIONS

### NOTES

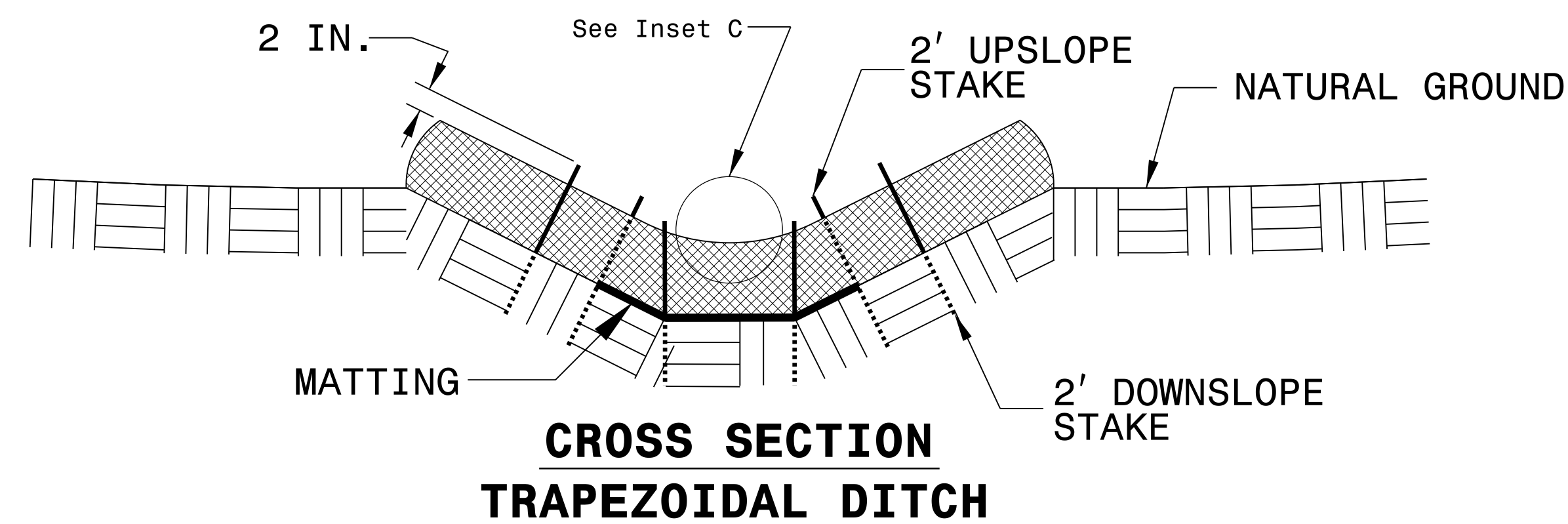
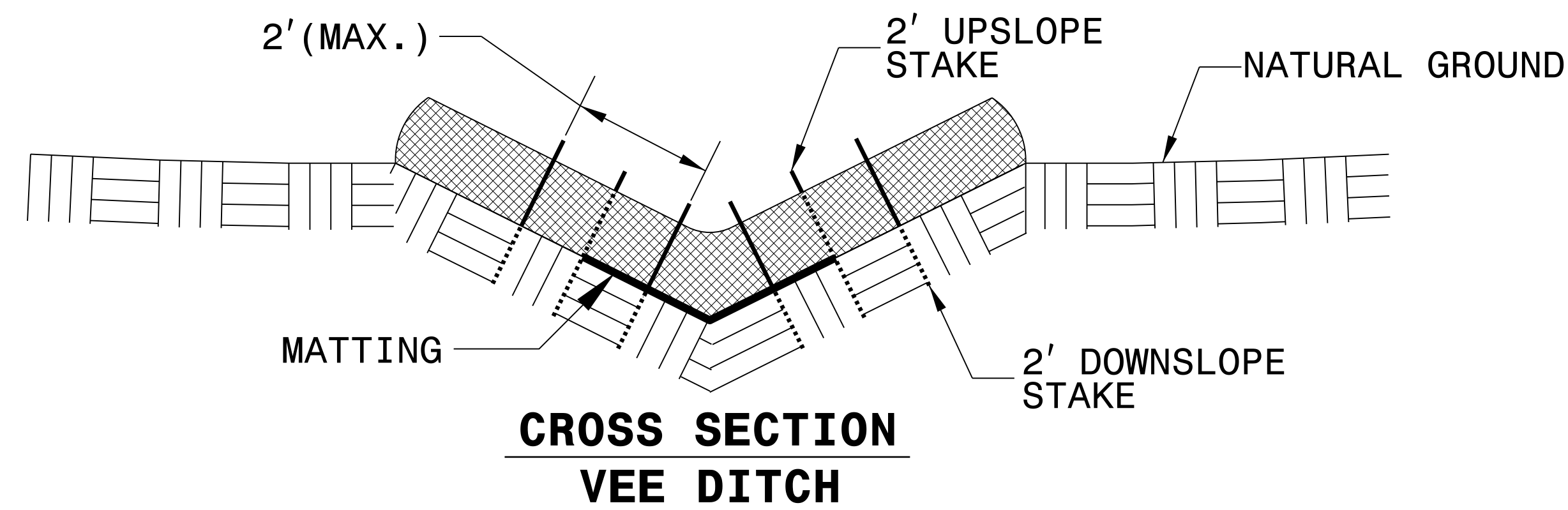
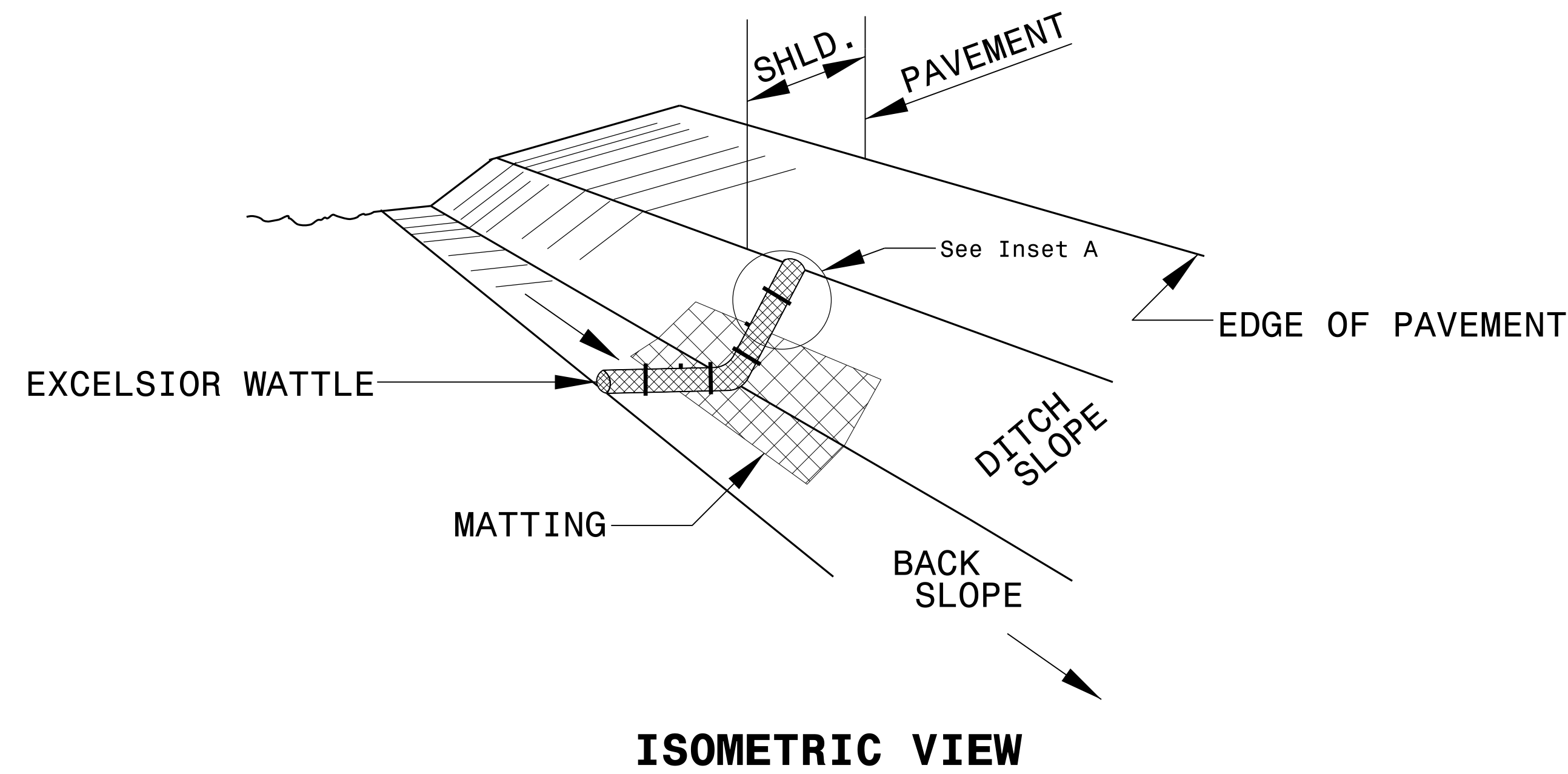
1. SEED AND PLACE MATTING FOR EROSION CONTROL ON INTERIOR AND EXTERIOR SIDESLOPES.
2. LIMIT EARTH DIKE HEIGHT TO 5 FT.
3. FOR BASIN DEPTH OF 3 FT., THE MINIMUM BASIN WIDTH SHALL BE 9 FT.
4. DETERMINE PRIMARY SPILLWAY WEIR LENGTH (FT.) USING  $Q/0.8$ , WHERE Q IS FLOW RATE (CFS) INTO BASIN.
5. PLASTIC SLOPE DRAIN PIPE AT INLET OF BASIN MAY BE REPLACED BY FILTRATION GEOTEXTILE OR TARP AS DIRECTED.
6. SOIL STABILIZATION GEOTEXTILE FOR PRIMARY SPILLWAY SHALL BE ONE CONTINUOUS PIECE OF MATERIAL OR OVERLAPPED 18 IN. (MIN.).

NOT TO SCALE



PROJECT REFERENCE NO. B-5360	SHEET NO. EC-2B
RW SHEET NO.	
ROADWAY DESIGN ENGINEER	HYDRAULICS ENGINEER

# WATTLE WITH POLYACRYLAMIDE (PAM) DETAIL



**NOTES:**

USE MINIMUM 12 IN. DIAMETER EXCELSIOR WATTLE.

USE 2 FT. WOODEN STAKES WITH A 2 IN. BY 2 IN. NOMINAL CROSS SECTION.

ONLY INSTALL WATTLE(S) TO A HEIGHT IN DITCH SO FLOW WILL NOT WASH AROUND WATTLE AND SCOUR DITCH SLOPES AND AS DIRECTED.

INSTALL A MINIMUM OF 2 UPSLOPE STAKES AND 4 DOWNSLOPE STAKES AT AN ANGLE TO WEDGE WATTLE TO BOTTOM OF DITCH.

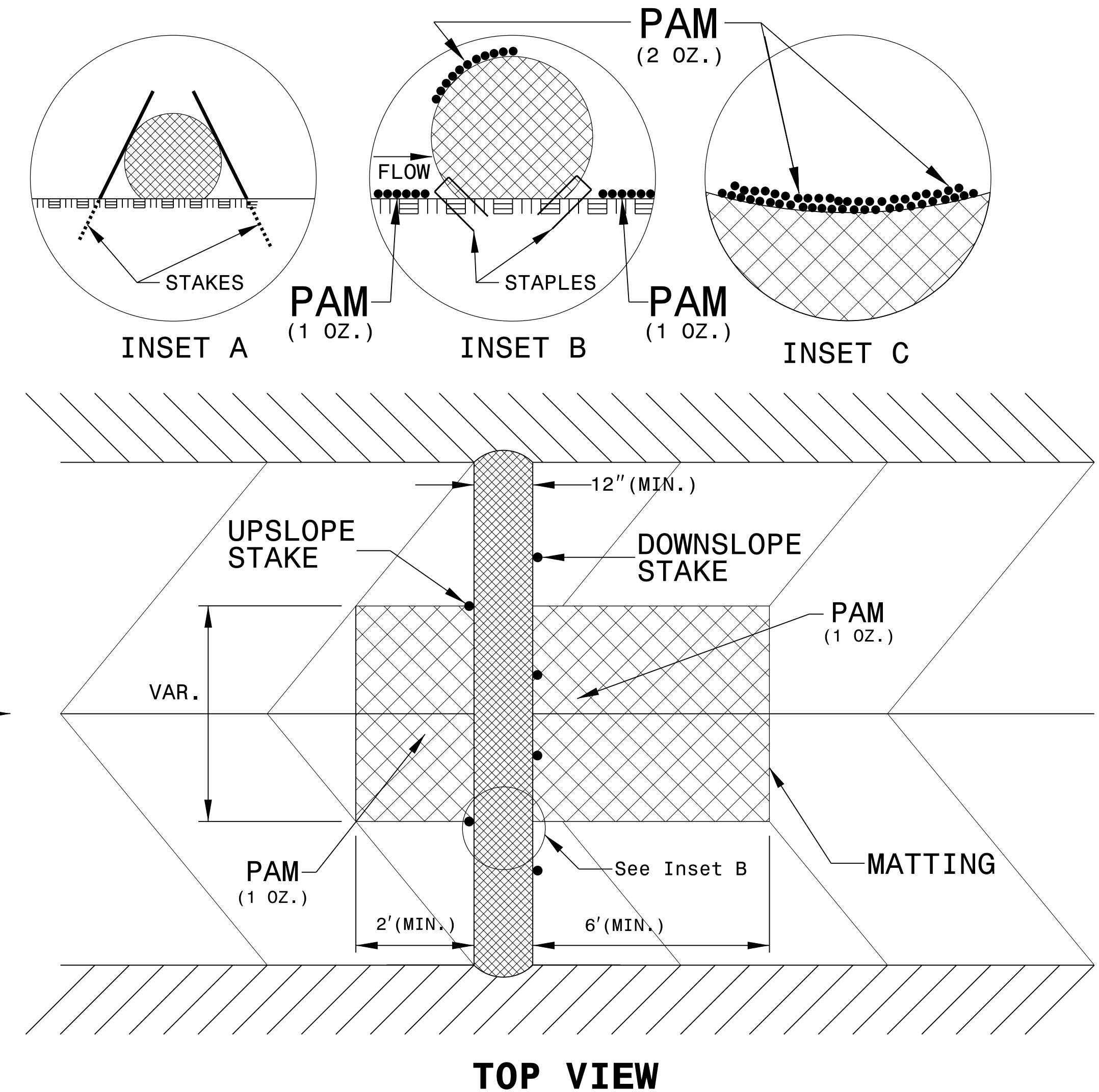
PROVIDE STAPLES MADE OF 0.125 IN. DIAMETER STEEL WIRE FORMED INTO A U SHAPE NOT LESS THAN 12" IN LENGTH.

INSTALL STAPLES APPROXIMATELY EVERY 1 LINEAR FOOT ON BOTH SIDES OF WATTLE AND AT EACH END TO SECURE IT TO THE SOIL.

INSTALL MATTING IN ACCORDANCE WITH SECTION 1631 OF THE STANDARD SPECIFICATIONS.

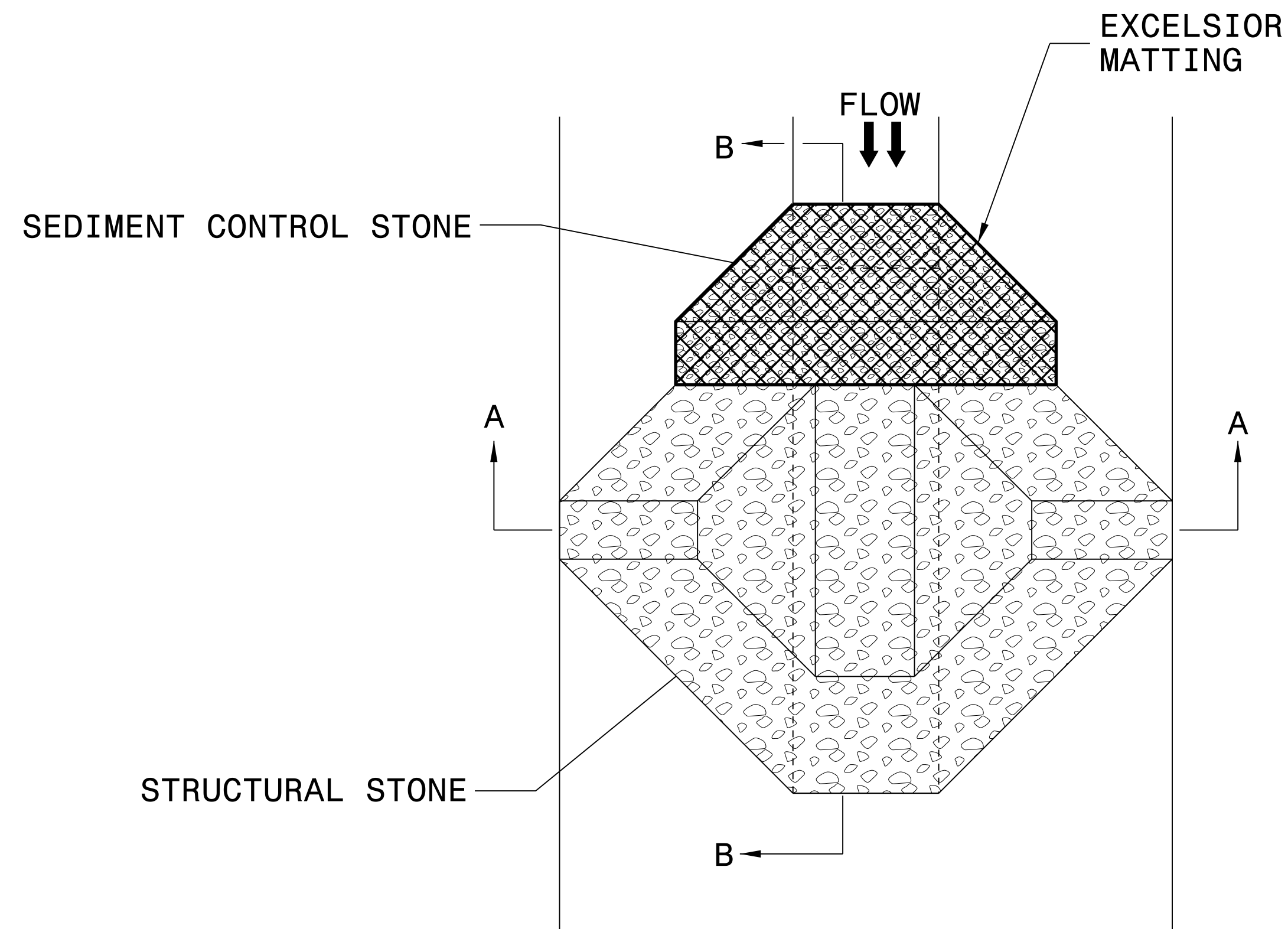
PRIOR TO POLYACRYLAMIDE (PAM) APPLICATION, OBTAIN A SOIL SAMPLE FROM PROJECT LOCATION, AND FROM OFFSITE MATERIAL, AND ANALYZE FOR APPROPRIATE PAM FLOCCULANT TO BE APPLIED TO EACH WATTLE.

INITIALLY APPLY 2 OUNCES OF ANIONIC OR NEUTRALLY CHARGED PAM OVER WATTLE WHERE WATER WILL FLOW AND 1 OUNCE OF PAM ON MATTING ON EACH SIDE OF WATTLE. REAPPLY PAM AFTER EVERY RAINFALL EVENT THAT IS EQUAL TO OR EXCEEDS 0.50 IN.

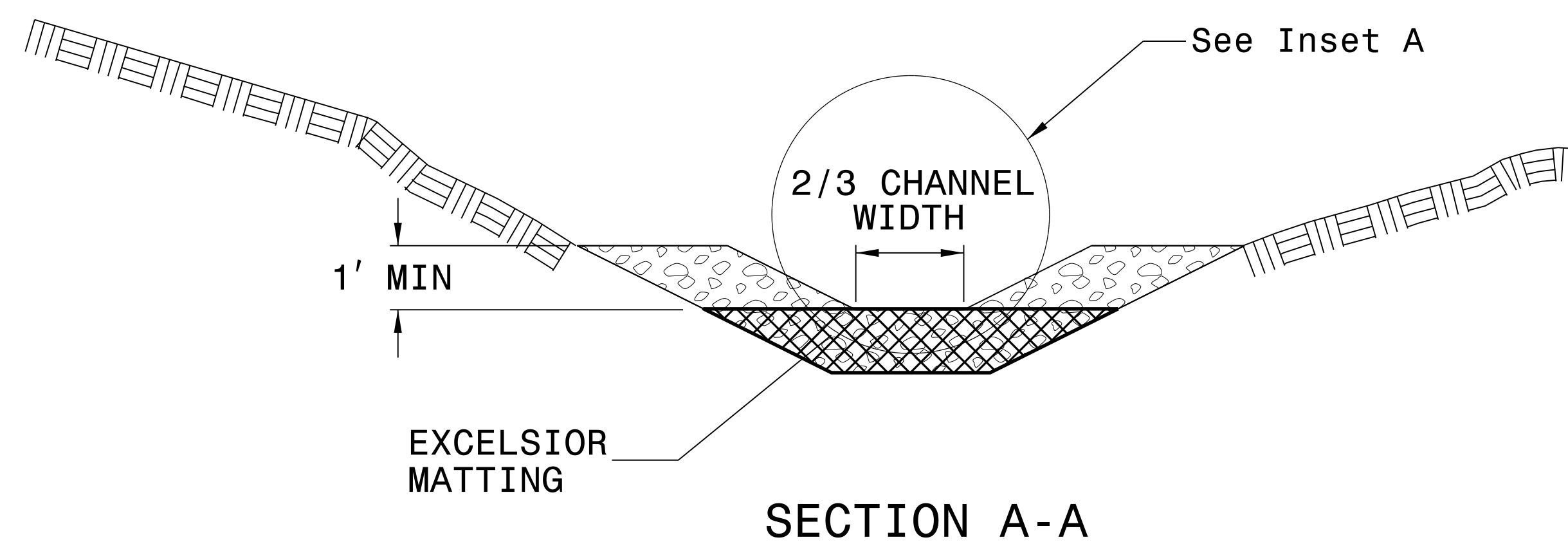


PROJECT REFERENCE NO. B-5360	SHEET NO. EC-2C
RW SHEET NO.	
ROADWAY DESIGN ENGINEER	HYDRAULICS ENGINEER

# TEMPORARY ROCK SILT CHECK TYPE 'A' WITH EXCELSIOR MATTING AND POLYACRYLAMIDE (PAM)



PLAN



SECTION A-A

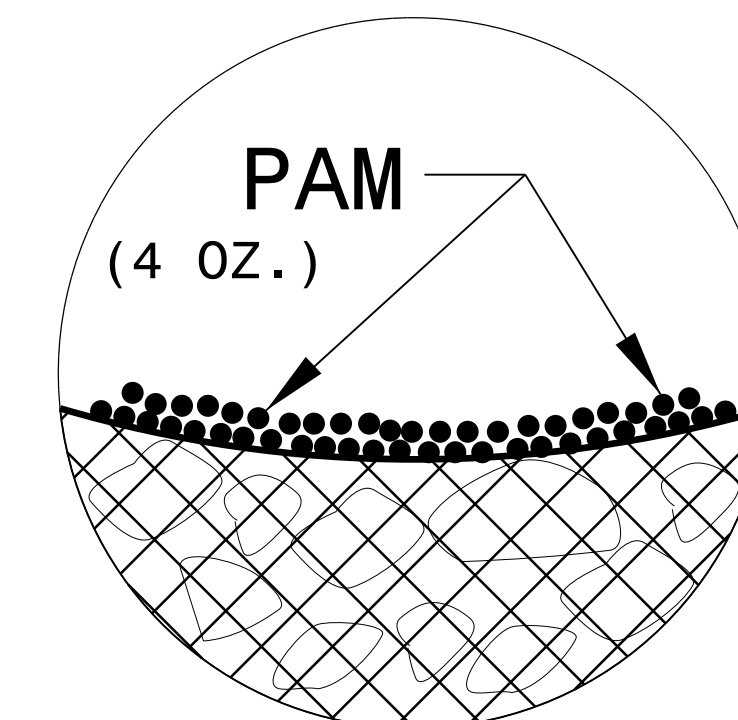
**NOTES:**

INSTALL TEMPORARY ROCK SILT CHECK TYPE A IN ACCORDANCE WITH ROADWAY STANDARD DRAWING NO. 1633.01.

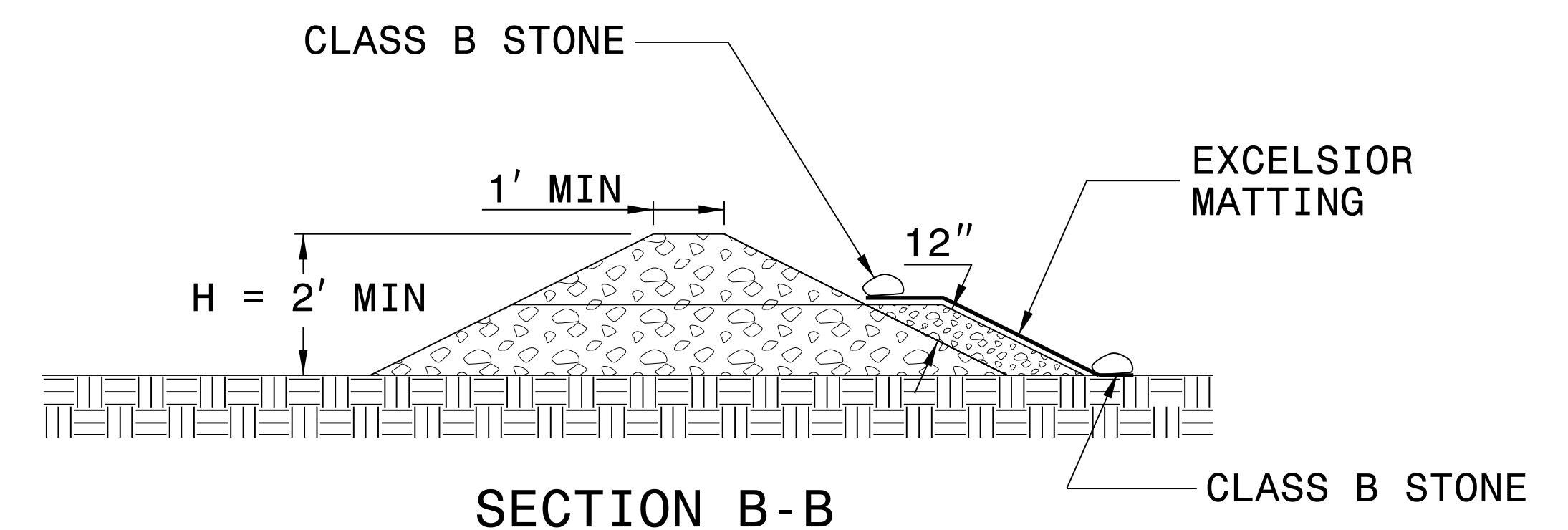
USE EXCELSIOR FOR MATTING MATERIAL AND ANCHOR MATTING SECTION AT TOP AND BOTTOM WITH CLASS B STONE.

PRIOR TO POLYACRYLAMIDE (PAM) APPLICATION, OBTAIN A SOIL SAMPLE FROM PROJECT LOCATION, AND FROM OFFSITE MATERIAL, AND ANALYZE FOR APPROPRIATE PAM FLOCCULANT TO BE APPLIED TO EACH ROCK SILT CHECK.

INITIALLY APPLY 4 OUNCES OF POLYACRYLAMIDE (PAM) TO TOP OF MATTING SECTION AND AFTER EVERY RAINFALL EVENT THAT EQUALS OR EXCEEDS 0.50 INCHES.



INSET A



SECTION B-B

NOT TO SCALE



DIVISION OF HIGHWAYS  
STATE OF NORTH CAROLINA

---



---

PROJECT REFERENCE NO. <i>B-5360</i>	SHEET NO. <i>EC-3A</i>
ROADWAY DESIGN ENGINEER	HYDRAULICS ENGINEER

# ***SOIL STABILIZATION TIMEFRAMES***

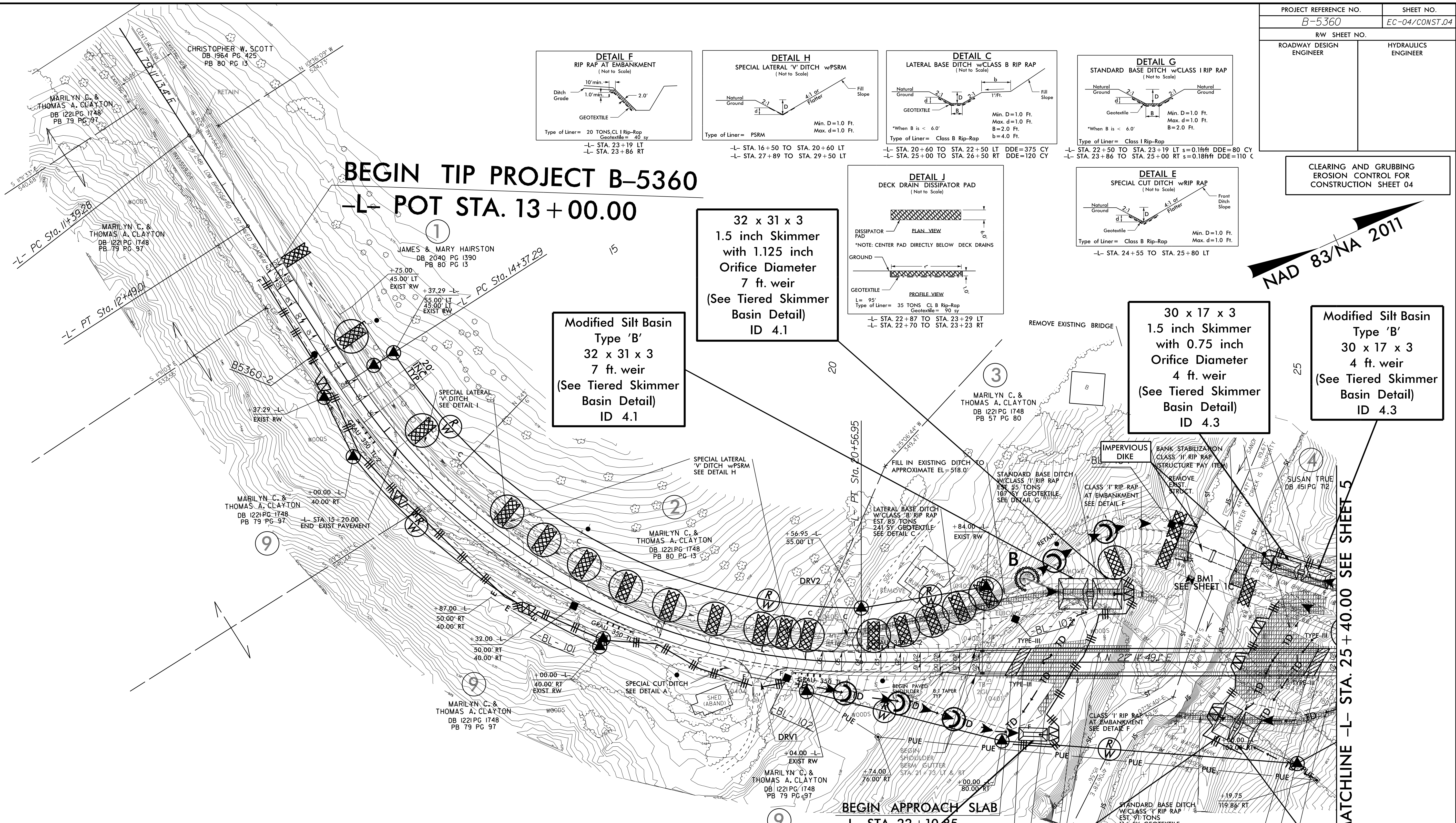
<i>SITE DESCRIPTION</i>	<i>STABILIZATION TIME</i>	<i>TIMEFRAME EXCEPTIONS</i>
PERIMETER DIKES, SWALES, DITCHES AND SLOPES	7 DAYS	NONE
HIGH QUALITY WATER (HQW) ZONES	7 DAYS	NONE
SLOPES STEEPER THAN 3:1	7 DAYS	IF SLOPES ARE 10' OR LESS IN LENGTH AND ARE NOT STEEPER THAN 2:1, 14 DAYS ARE ALLOWED.
SLOPES 3:1 OR FLATTER	14 DAYS	7 DAYS FOR SLOPES GREATER THAN 50' IN LENGTH.
ALL OTHER AREAS WITH SLOPES FLATTER THAN 4:1	14 DAYS	NONE, EXCEPT FOR PERIMETERS AND HQW ZONES.



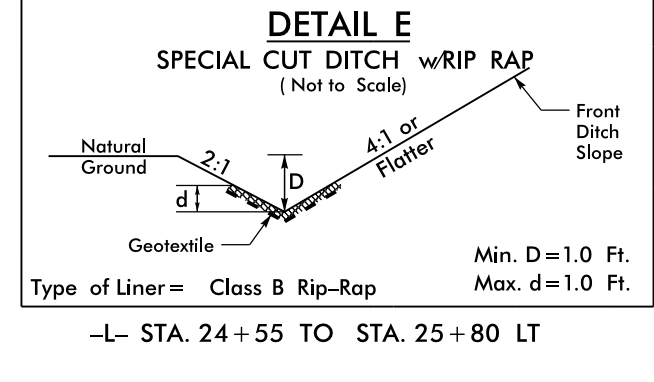
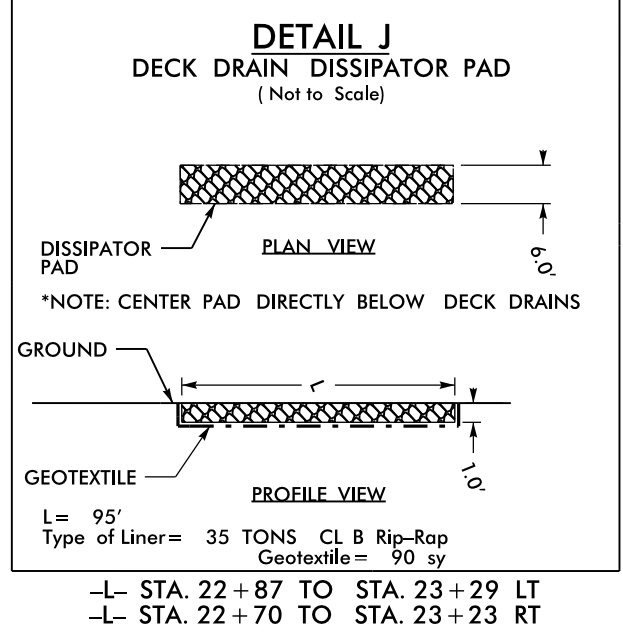
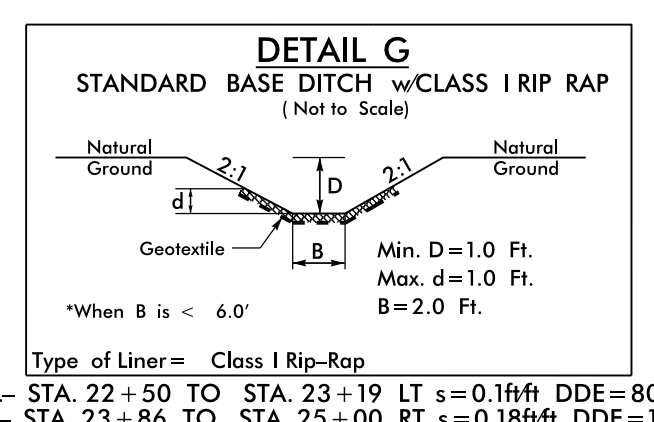
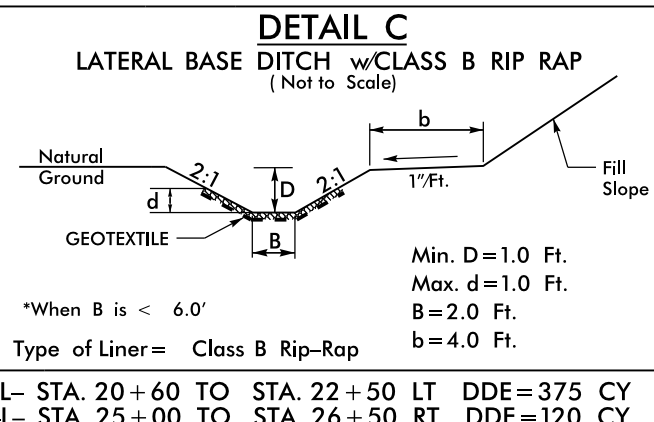
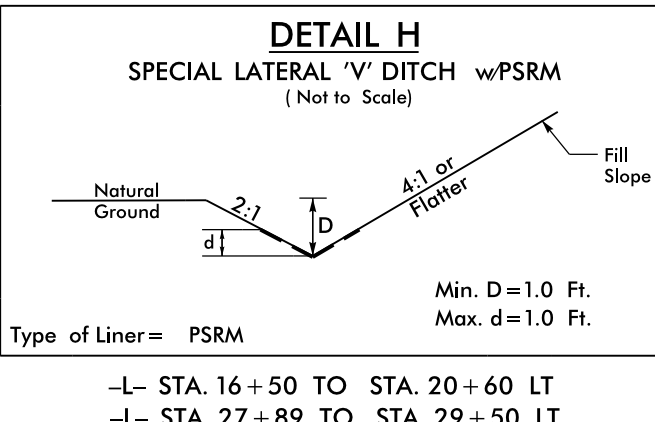
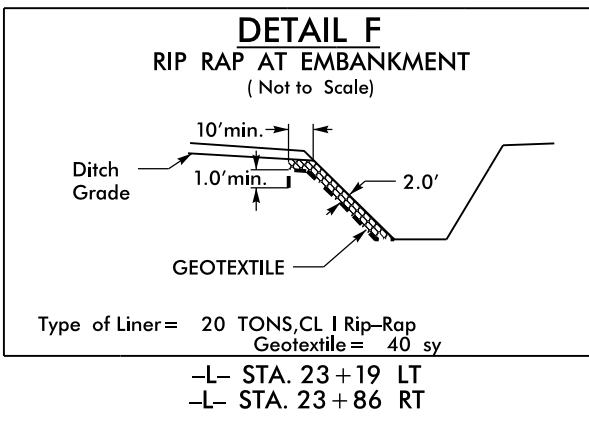
CLEARING AND GRUBBING EROSION CONTROL FOR CONSTRUCTION SHEET 04

NAD 83/NA 2011

MATCHLINE -L- STA. 25 + 40.00 SEE SHEET 5



**BEGIN TIP PROJECT B-5360**  
**-L- POT STA. 13 + 00.00**



**Modified Silt Basin**  
 Type 'B'  
 32 x 31 x 3  
 7 ft. weir  
 (See Tiered Skimmer Basin Detail)  
 ID 4.1

**32 x 31 x 3**  
 1.5 inch Skimmer  
 with 1.125 inch  
 Orifice Diameter  
 7 ft. weir  
 (See Tiered Skimmer Basin Detail)  
 ID 4.1

**30 x 17 x 3**  
 1.5 inch Skimmer  
 with 0.75 inch  
 Orifice Diameter  
 4 ft. weir  
 (See Tiered Skimmer Basin Detail)  
 ID 4.3

**Modified Silt Basin**  
 Type 'B'  
 30 x 17 x 3  
 4 ft. weir  
 (See Tiered Skimmer Basin Detail)  
 ID 4.3

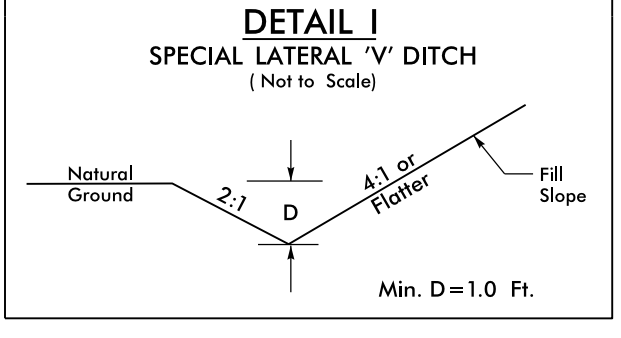
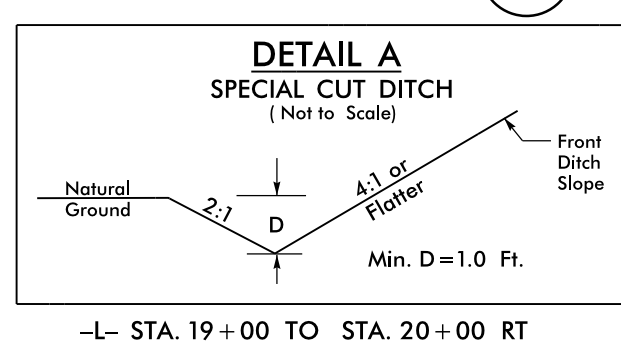
**29 x 13 x 3**  
 1.5 inch Skimmer  
 with 0.375 inch  
 Orifice Diameter  
 4 ft. weir  
 ID 4.2

**20 x 34 x 3**  
 1.5 inch Skimmer  
 with 0.875 inch  
 Orifice Diameter  
 5 ft. weir  
 (See Tiered Skimmer Basin Detail)  
 ID 4.4

**Modified Silt Basin**  
 Type 'B'  
 20 x 34 x 3  
 5 ft. weir  
 (See Tiered Skimmer Basin Detail)  
 ID 4.4

NOTE: PLACE TEMPORARY ROCK SEDIMENT DAMS TYPE - B AND TEMPORARY ROCK SILT CHECKS TYPE - A AT DRAINAGE OUTLETS.

NOTE: UTILIZE SPECIAL STILLING BASIN WHERE APPLICABLE.



**BEGIN APPROACH SLAB**  
 -L- STA. 22 + 10.85

**BEGIN BRIDGE**  
 -L- STA. 22 + 21.70

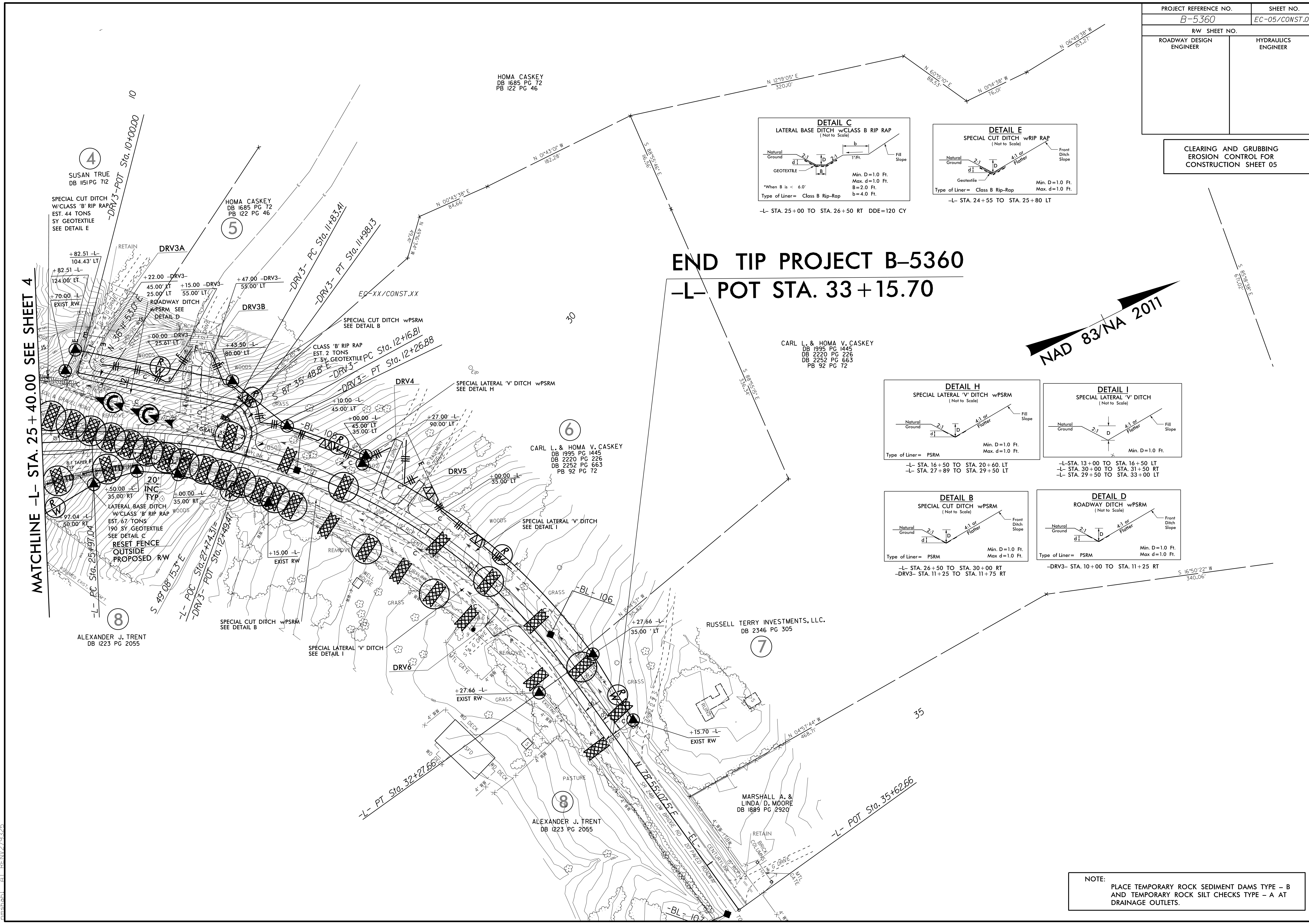
**END BRIDGE**  
 -L- STA. 25 + 14.30

**END APPROACH SLAB**  
 -L- STA. 25 + 25.15

ALEXANDER J. TRENT  
 DB 1223 PG 2055

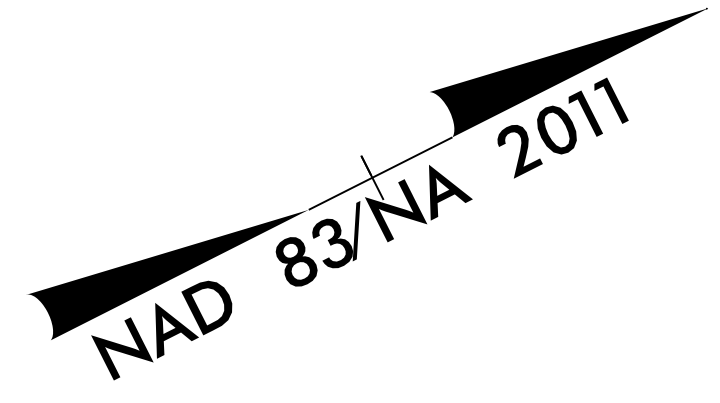
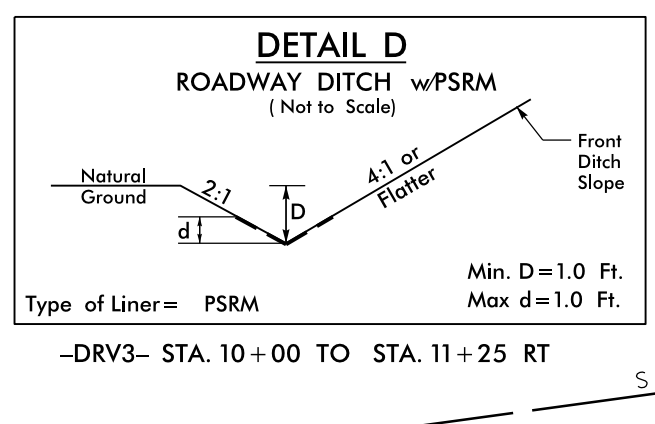
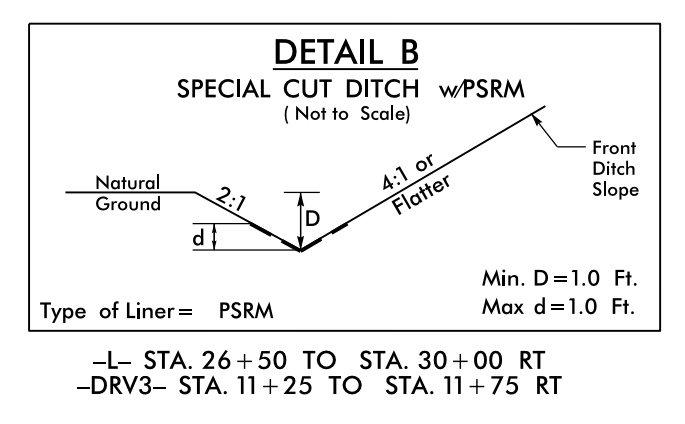
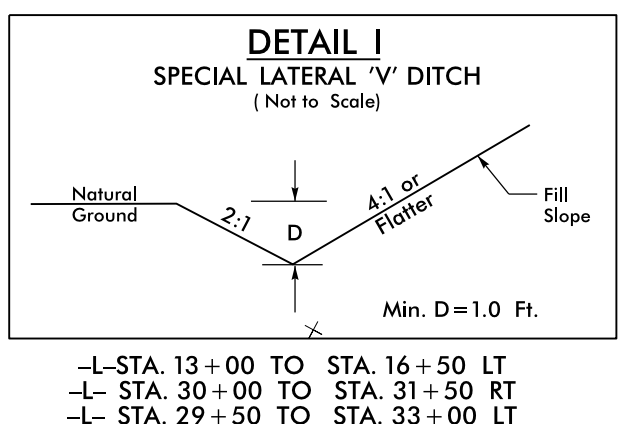
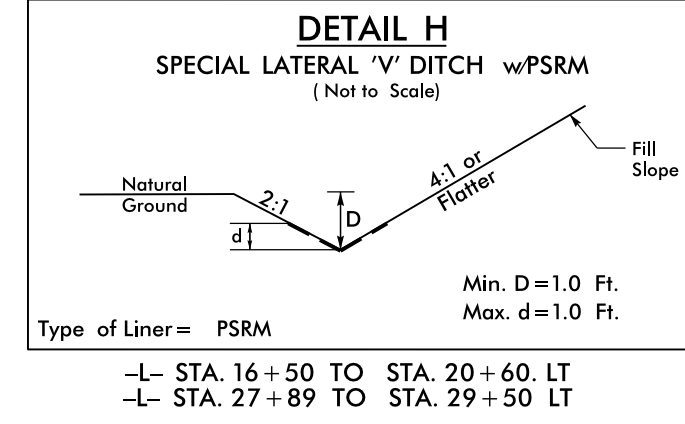
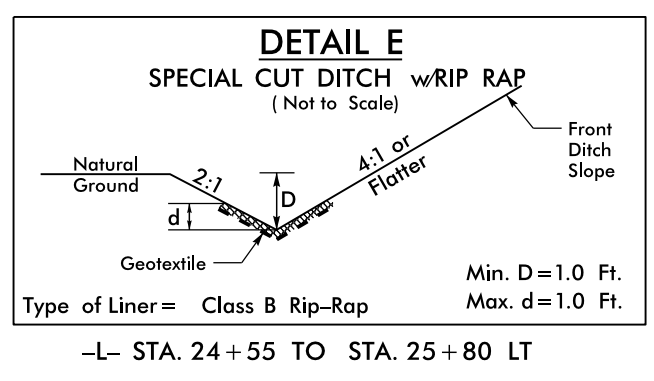
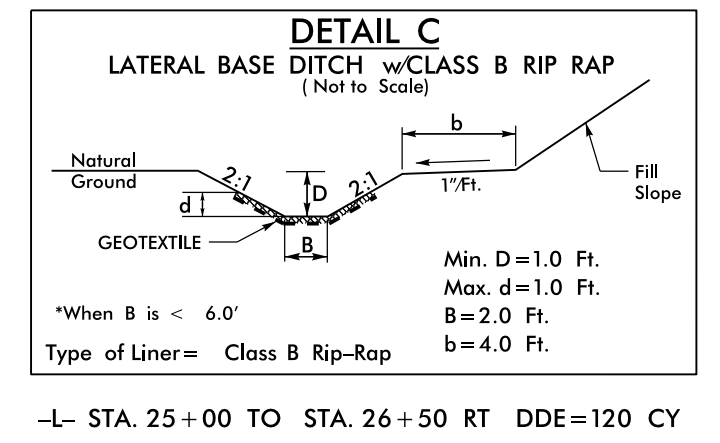
PROJECT REFERENCE NO.	SHEET NO.
B-5360	EC-05/CONST.05
RW SHEET NO.	
ROADWAY DESIGN ENGINEER	HYDRAULICS ENGINEER

CLEARING AND GRUBBING EROSION CONTROL FOR CONSTRUCTION SHEET 05



# END TIP PROJECT B-5360

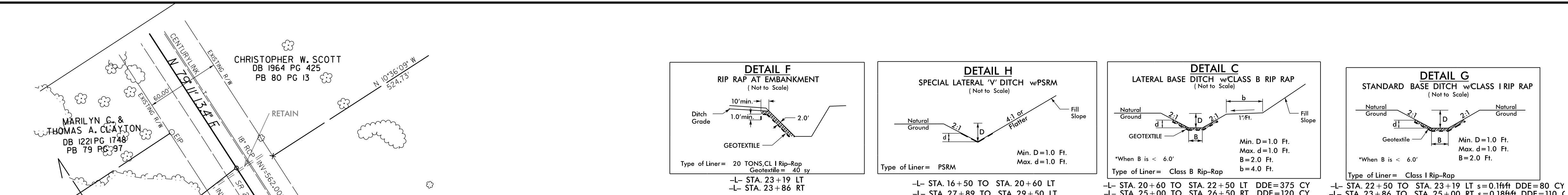
## -L- POT STA. 33+15.70



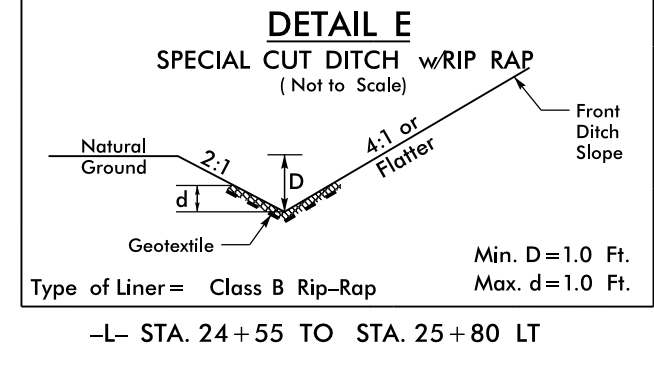
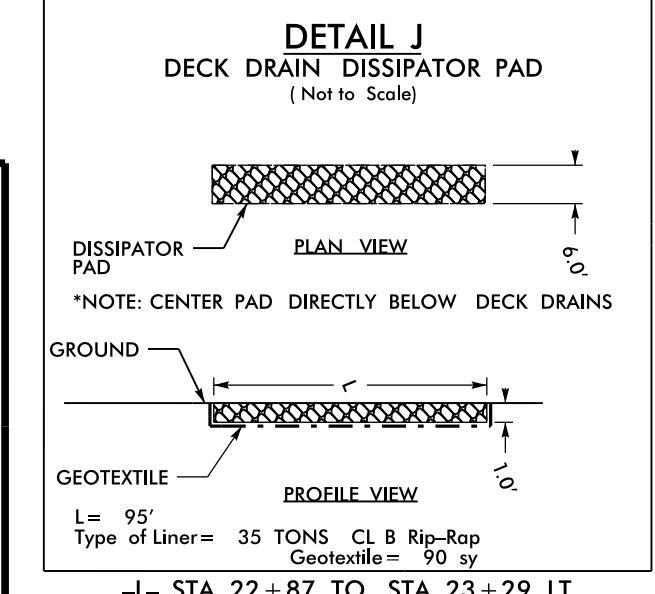
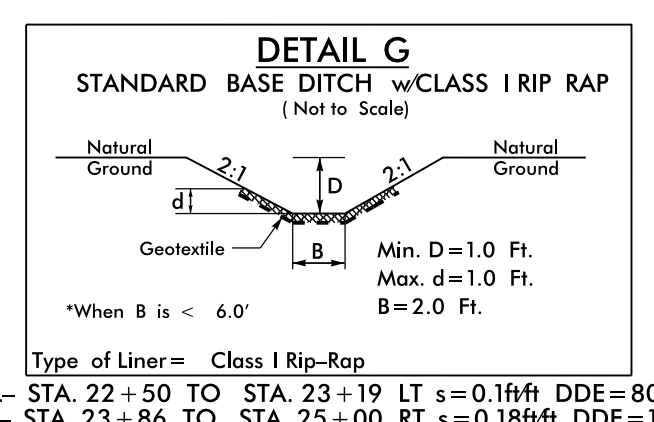
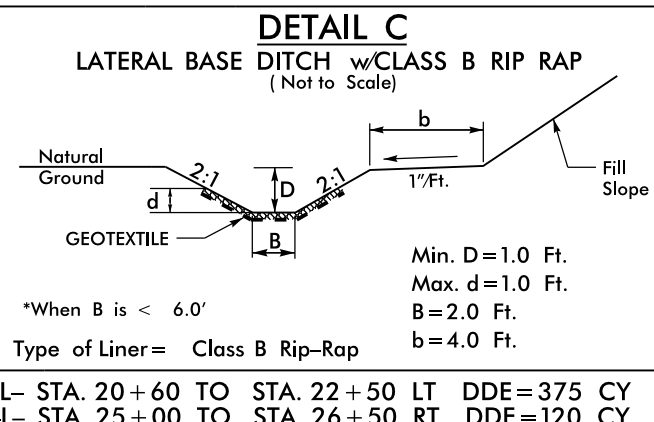
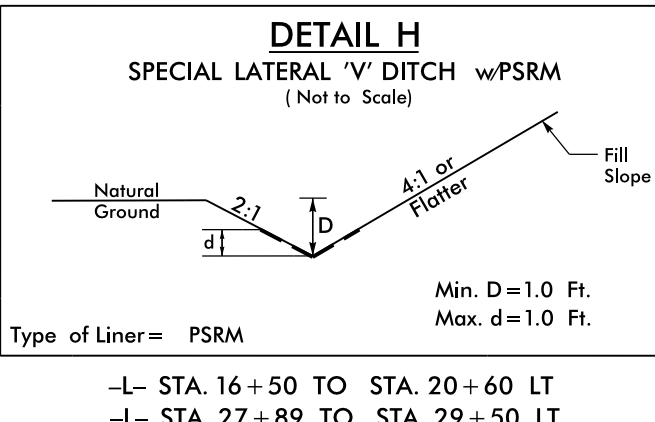
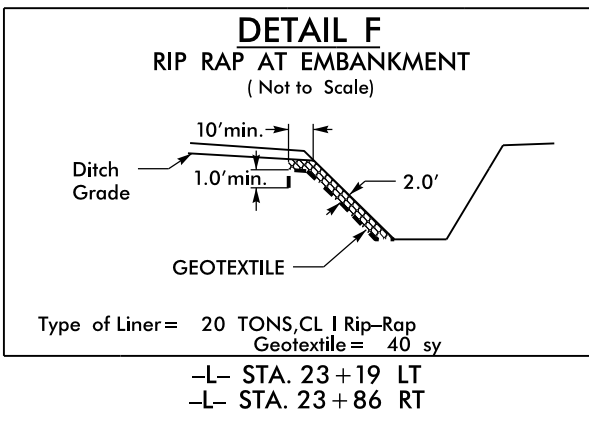
NOTE:  
PLACE TEMPORARY ROCK SEDIMENT DAMS TYPE - B AND TEMPORARY ROCK SILT CHECKS TYPE - A AT DRAINAGE OUTLETS.

30 JUN 2016 09:24  
 R:\Projects\Design\B-5360\_EC\_psh5.dgn  
 AT: TRENT

PROJECT REFERENCE NO.	SHEET NO.
B-5360	EC-06/CONST.04
RW SHEET NO.	
ROADWAY DESIGN ENGINEER	HYDRAULICS ENGINEER



**BEGIN TIP PROJECT B-5360**  
**-L- POT STA. 13 + 00.00**



**32 x 31 x 3**  
**1.5 inch Skimmer**  
**with 1.125 inch**  
**Orifice Diameter**  
**7 ft. weir**  
**(See Tiered Skimmer**  
**Basin Detail)**  
**ID 4.1**

**Modified Silt Basin**  
**Type 'B'**  
**32 x 31 x 3**  
**7 ft. weir**  
**(See Tiered Skimmer**  
**Basin Detail)**  
**ID 4.1**

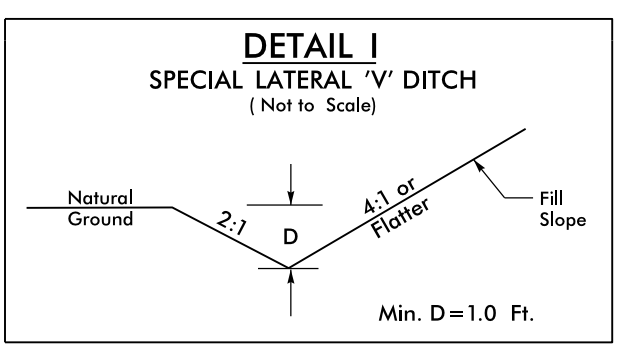
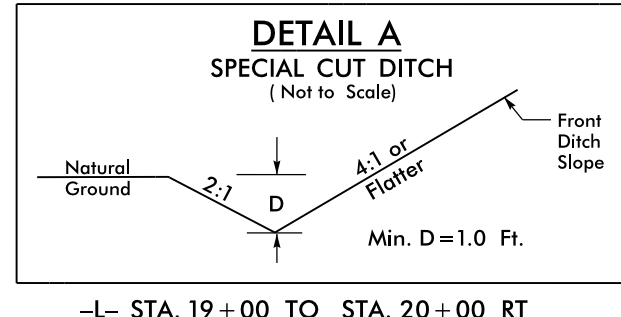
**30 x 17 x 3**  
**1.5 inch Skimmer**  
**with 0.75 inch**  
**Orifice Diameter**  
**4 ft. weir**  
**(See Tiered Skimmer**  
**Basin Detail)**  
**ID 4.3**

**Modified Silt Basin**  
**Type 'B'**  
**30 x 17 x 3**  
**4 ft. weir**  
**(See Tiered Skimmer**  
**Basin Detail)**  
**ID 4.3**

Place Matting for Erosion Control  
 on Slope as Work Allows.  
 Sta. 21+00 to Sta. 22+80

Place Matting for Erosion Control  
 on Slope as Work Allows.  
 Sta. 24+12 to Sta. 25+40

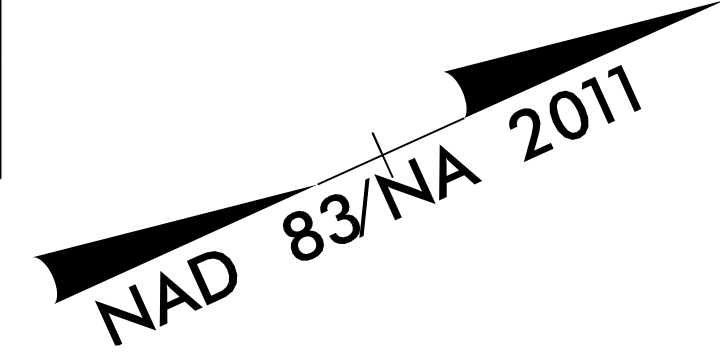
NOTE:  
 UTILIZE SPECIAL STILLING BASIN WHERE APPLICABLE.



**29 x 13 x 3**  
**1.5 inch Skimmer**  
**with 0.375 inch**  
**Orifice Diameter**  
**4 ft. weir**  
**ID 4.2**

**20 x 34 x 3**  
**1.5 inch Skimmer**  
**with 0.875 inch**  
**Orifice Diameter**  
**5 ft. weir**  
**(See Tiered Skimmer**  
**Basin Detail)**  
**ID 4.4**

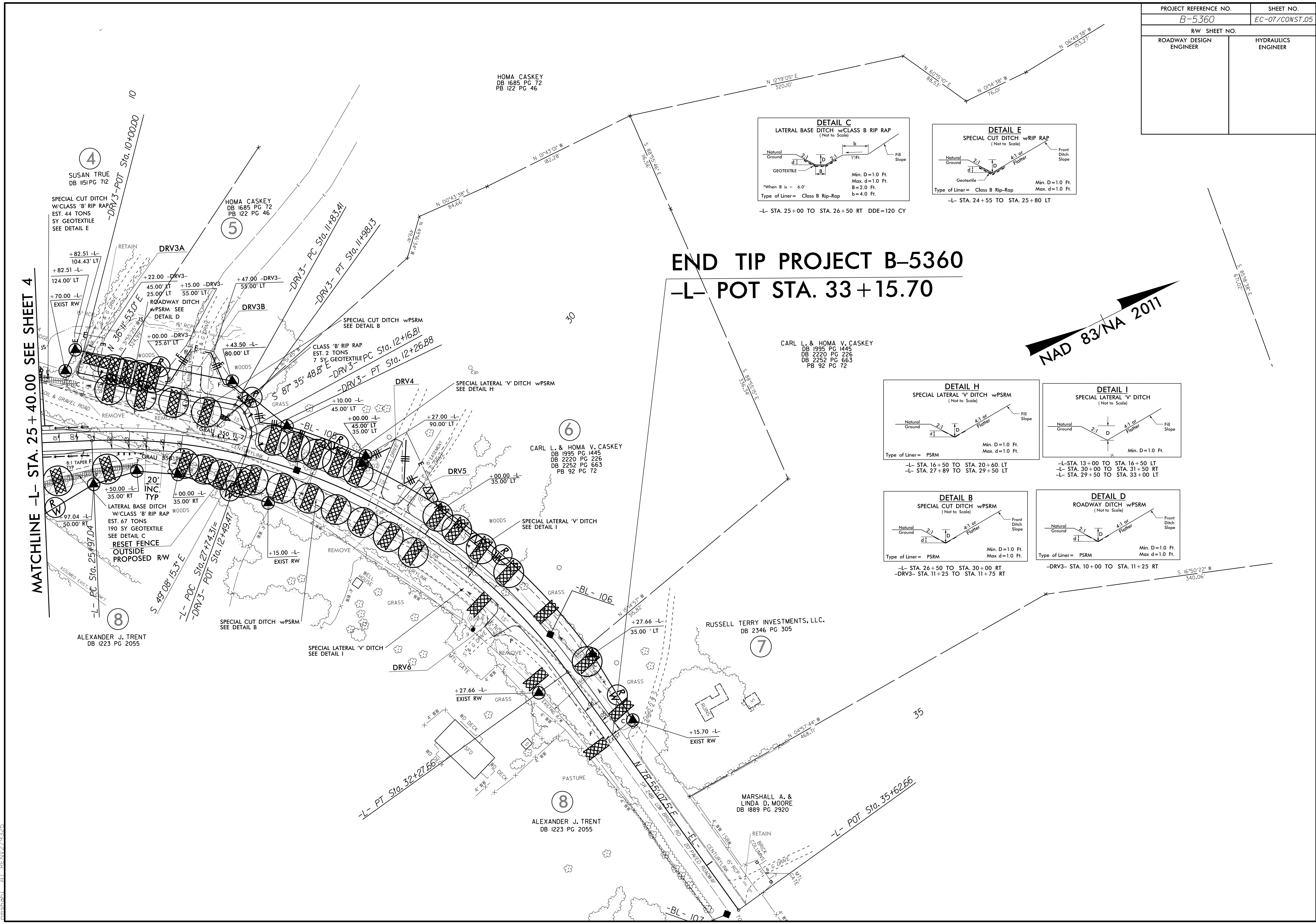
**Modified Silt Basin**  
**Type 'B'**  
**20 x 34 x 3**  
**5 ft. weir**  
**(See Tiered Skimmer**  
**Basin Detail)**  
**ID 4.4**



MATCHLINE -L- STA. 25 + 40.00 SEE SHEET 5

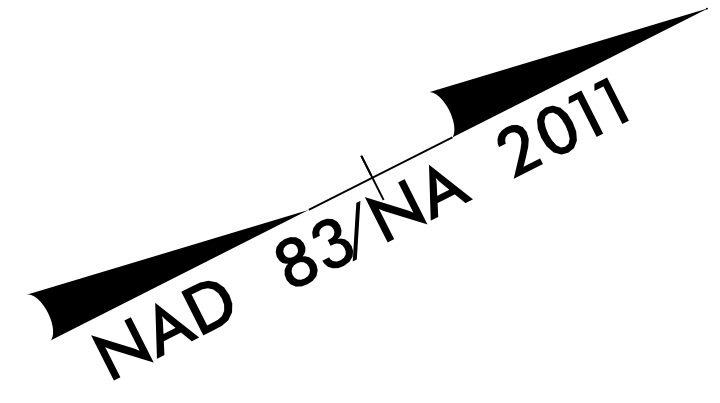
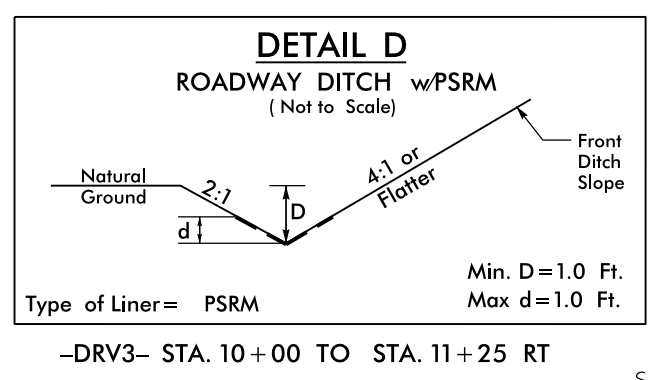
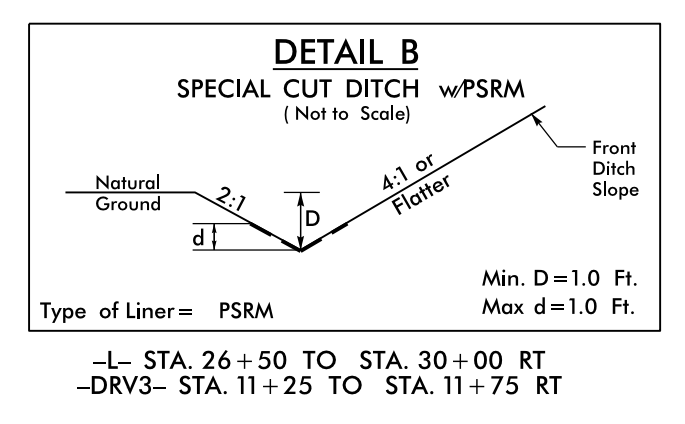
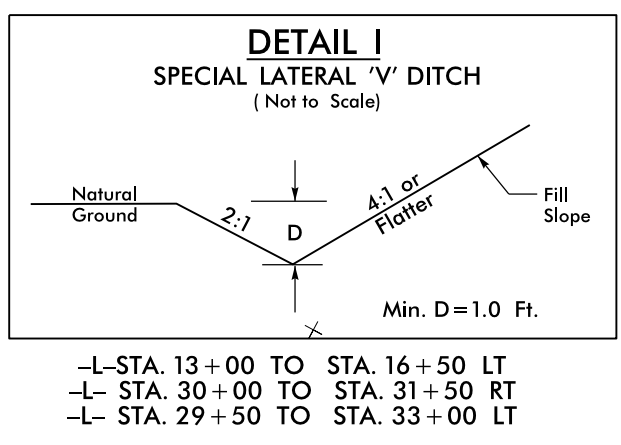
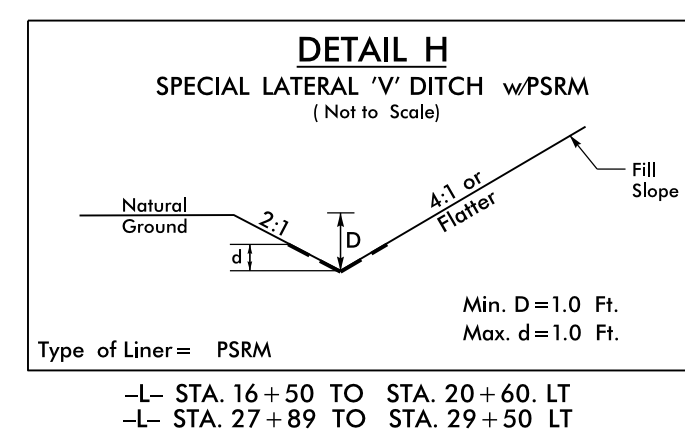
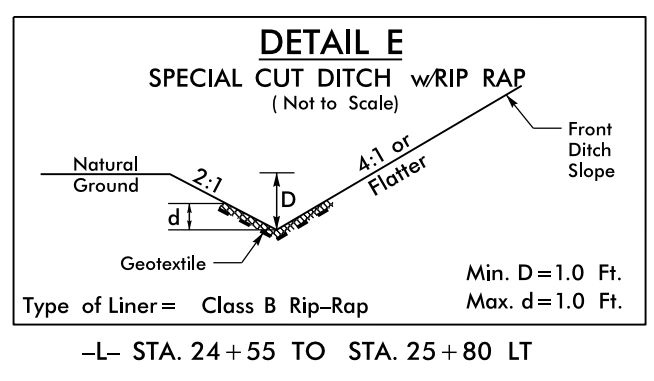
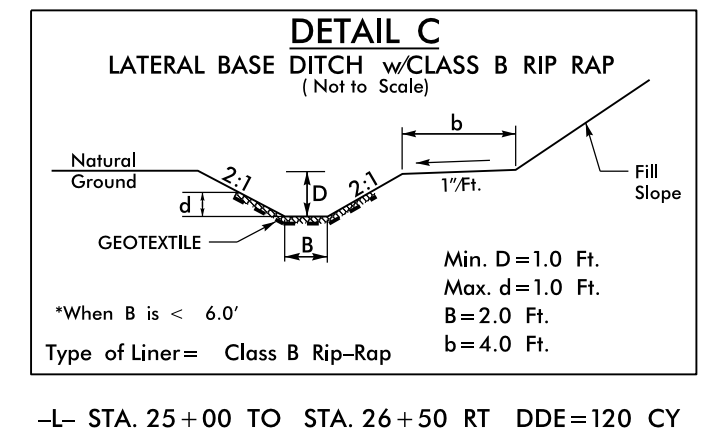
30 JUN 2016 09:14  
 R:\Projects\2016\B-5360\EC-06\Const\4.dgn  
 AT: BRENDA

PROJECT REFERENCE NO.	SHEET NO.
B-5360	EC-07/CONST.05
RW SHEET NO.	
ROADWAY DESIGN ENGINEER	HYDRAULICS ENGINEER



# END TIP PROJECT B-5360

## -L- POT STA. 33+15.70



MATCHLINE -L- STA. 25+40.00 SEE SHEET 4

30-JUN-2016 09:31 C:\Users\jrtrent\Documents\B-5360\_EC-psh5.dgn AT:JRTRENT