

**This electronic collection of documents is provided
for the convenience of the user
and is Not a Certified Document –**

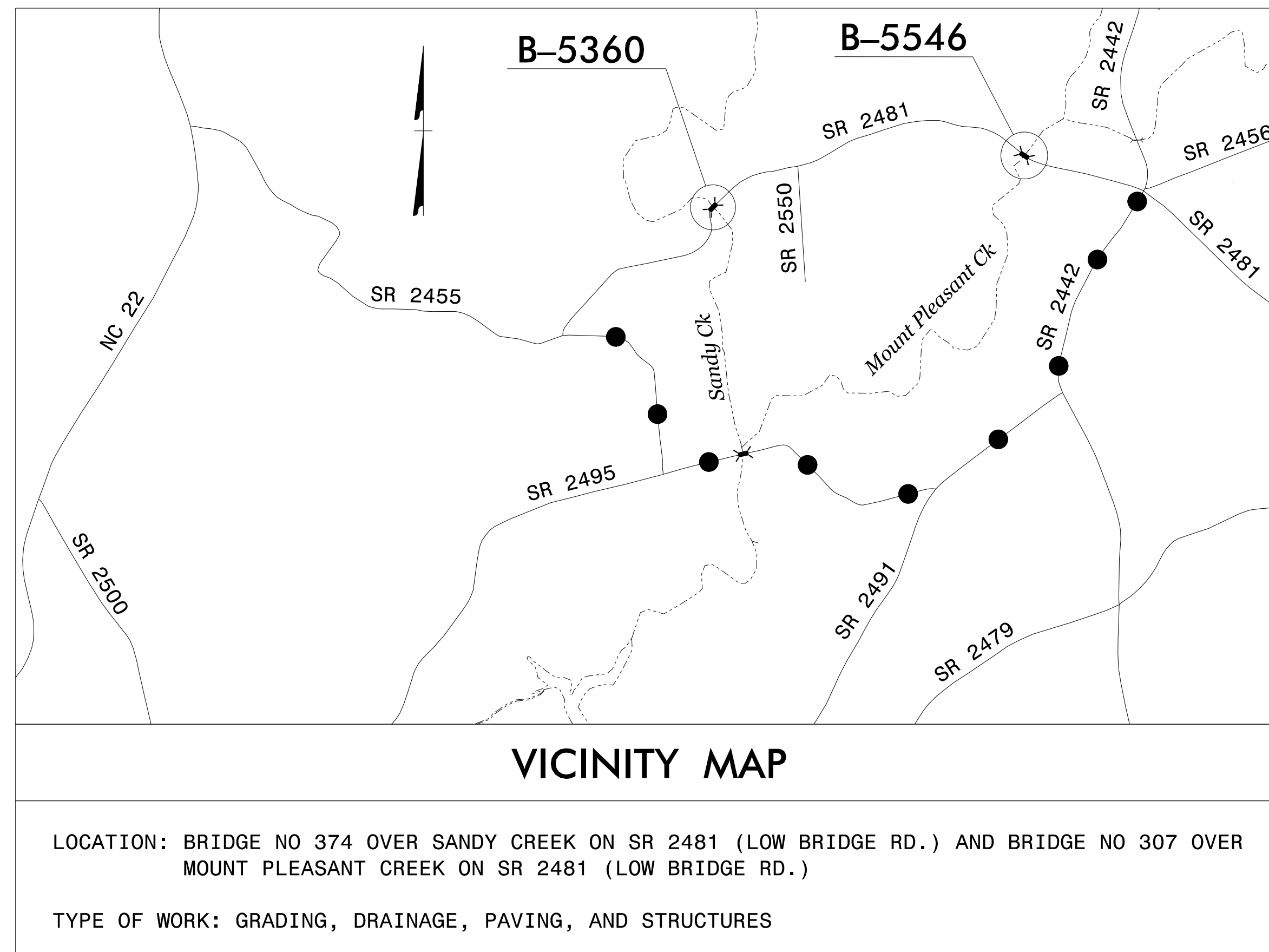
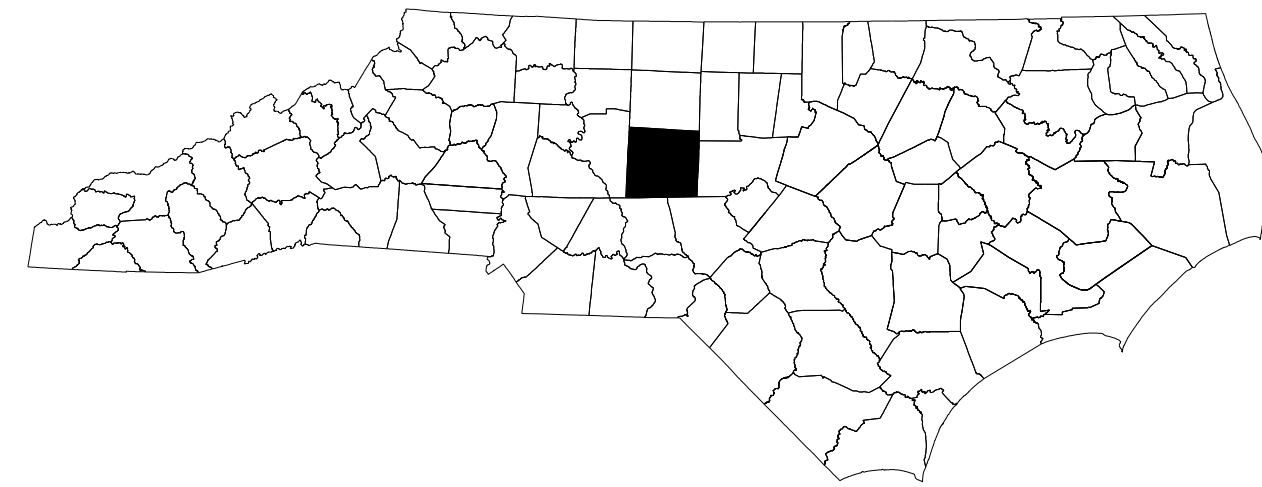
**The documents contained herein were originally issued
and sealed by the individuals whose names and license
numbers appear on each page, on the dates appearing
with their signature on that page.**

**This file or an individual page
shall not be considered a certified document.**

STATE OF NORTH CAROLINA
DIVISION OF HIGHWAYS

TRANSPORTATION MANAGEMENT PLAN

RANDOLPH COUNTY



INDEX OF SHEETS

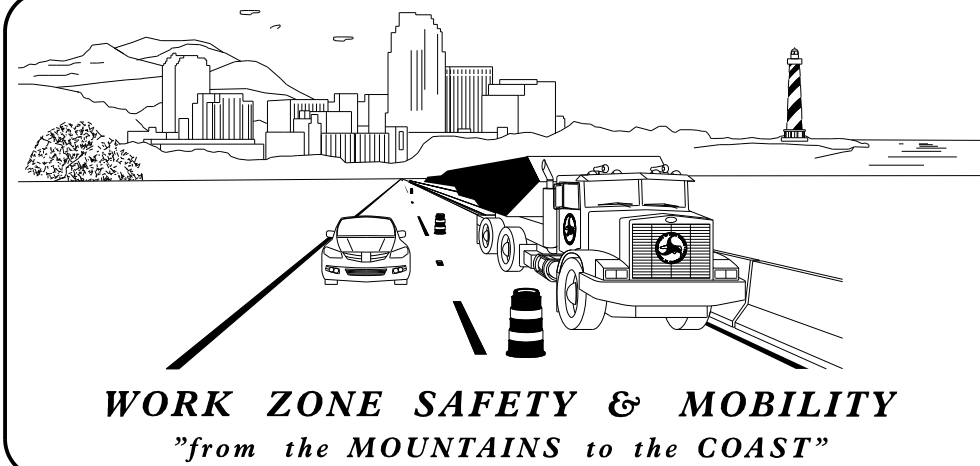
SHEET NO.	TITLE
TMP-1	TITLE SHEET, VICINITY MAP, AND INDEX OF SHEETS
TMP-1A	LIST OF APPLICABLE ROADWAY STANDARD DRAWINGS AND LEGEND
TMP-1B	TRANSPORTATION OPERATIONS PLAN: (MANAGEMENT STRATEGIES, GENERAL NOTES AND LOCAL NOTES AND PHASING)
TMP-2	SPECIAL SIGN DESIGN
TMP-3	OFFSITE DETOUR ROUTE
TMP-4	ROAD CLOSURE DETAILS

SHEET NO.
TMP-1

B-5360 / B-5546

TIP PROJECT:

6/30/2016
R:\TIP\Projects-B\B5360\TrafficControl\TCP\B-5360_5546_TC_TMP_01.dgn
User: dcrichardson



N.C.D.O.T. WORK ZONE TRAFFIC CONTROL
1561 MAIL SERVICE CENTER (MSC) RALEIGH, NC 27699-1561
750 N. GREENFIELD PARKWAY, GARNER, NC 27529 (DELIVERY)
PHONE: (919) 773-2800 FAX: (919) 771-2745

J. S. BOURNE, P.E. — STATE TRAFFIC MANAGEMENT ENGINEER

D. W. BISSETTE, P.E. — TRAFFIC CONTROL PROJECT ENGINEER

M. H. STEELMAN — TRAFFIC CONTROL PROJECT DESIGN ENGINEER

D. E. RICHARDSON — TRAFFIC CONTROL DESIGN ENGINEER



**DOCUMENT NOT CONSIDERED FINAL
UNLESS ALL SIGNATURES COMPLETED**

APPROVED: David Bisette
DATE: 6/30/2016

SEAL

ROADWAY STANDARD DRAWINGS

THE FOLLOWING ROADWAY STANDARDS AS SHOWN IN "ROADWAY STANDARD DRAWINGS" - PROJECT SERVICES UNIT - N.C. DEPARTMENT OF TRANSPORTATION - RALEIGH, N.C., DATED JANUARY 2012 ARE APPLICABLE TO THIS PROJECT AND BY REFERENCE HEREBY ARE CONSIDERED A PART OF THESE PLANS:

STD. NO.	TITLE
1101.03	TEMPORARY ROAD CLOSURES
1101.05	WORK ZONE VEHICLE ACCESSES
1101.11	TRAFFIC CONTROL DESIGN TABLES
1110.01	STATIONARY WORK ZONE SIGNS
1145.01	BARRICADES

LEGEND

GENERAL

- DIRECTION OF TRAFFIC FLOW
- DIRECTION OF PEDESTRIAN TRAFFIC FLOW
- EXIST. PVMT.
- NORTH ARROW
- PROPOSED PVMT.
- TEMP. SHORING (LOCATION PURPOSES ONLY)



WORK AREA



REMOVAL



USER DEFINED (IF NEEDED)



USER DEFINED (IF NEEDED)

SIGNALS

- EXISTING
- PROPOSED
- TEMPORARY

PAVEMENT MARKINGS

- EXISTING LINES
- TEMPORARY LINES

TRAFFIC CONTROL DEVICES

- BARRICADE (TYPE III)
- CONE
- DRUM
- SKINNY DRUM
- TUBULAR MARKER
- TEMPORARY CRASH CUSHION
- FLASHING ARROW BOARD
- FLAGGER
- LAW ENFORCEMENT
- TRUCK MOUNTED ATTENUATOR (TMA)
- CHANGEABLE MESSAGE SIGN

TEMPORARY SIGNING

- PORTABLE SIGN
- STATIONARY SIGN
- STATIONARY OR PORTABLE SIGN

PAVEMENT MARKERS

- CRYSTAL/CRYSTAL
- CRYSTAL/RED
- YELLOW/YELLOW

PAVEMENT MARKING SYMBOLS

- PAVEMENT MARKING SYMBOLS

6/30/2016 R:\p\Projects-B\B5360\TrafficControl\TCP\B-5360-5546-TC-TMP-01A.dgn User:derlcharlson

<p>APPROVED: <i>David Bisette</i></p> <p>DATE: 6/30/2016</p>		<p>ROADWAY STANDARD DRAWINGS & LEGEND</p>
<p>DOCUMENT NOT CONSIDERED FINAL UNLESS ALL SIGNATURES COMPLETED</p>		

MANAGEMENT STRATEGIES

TRAFFIC WILL BE MAINTAINED OFFSITE VIA SR 2455, SR 2495, SR 2491, AND SR 2442 DURING THE CONSTRUCTION OF THE TWO PROJECTS. ONLY ONE PROJECT WILL BE CONSTRUCTED AT A TIME.

LOCAL ACCESS TO ALL RESIDENCES AND BUSINESSES SHALL BE MAINTAINED.

GENERAL NOTES

CHANGES MAY BE REQUIRED WHEN PHYSICAL DIMENSIONS IN THE DETAIL DRAWINGS, STANDARD DETAILS, AND ROADWAY DETAILS ARE NOT ATTAINABLE TO MEET FIELD CONDITIONS OR RESULT IN DUPLICATE OR UNDESIRED OVERLAPPING OF DEVICES. MODIFICATION MAY INCLUDE: MOVING, SUPPLEMENTING, COVERING, OR REMOVAL OF DEVICES AS DIRECTED BY THE ENGINEER.

THE FOLLOWING GENERAL NOTES APPLY AT ALL TIMES FOR THE DURATION OF THE CONSTRUCTION PROJECT EXCEPT WHEN OTHERWISE NOTED IN THE PLAN OR DIRECTED BY THE ENGINEER.

SIGNING

- A) PROVIDE SIGNING AND DEVICES REQUIRED TO CLOSE THE ROAD ACCORDING TO THE ROADWAY STANDARD DRAWINGS AND TRAFFIC MANAGEMENT PLANS.

PROVIDE SIGNING REQUIRED FOR THE OFF-SITE DETOUR ROUTE AS SHOWN IN THE TRAFFIC MANAGEMENT PLANS.

- B) COVER OR REMOVE ALL SIGNS AND DEVICES REQUIRED TO CLOSE THE ROAD WHEN ROAD CLOSURE IS NOT IN OPERATION.

COVER OR REMOVE ALL SIGNS REQUIRED FOR THE OFF-SITE DETOUR WHEN THE DETOUR IS NOT IN OPERATION.

- C) ENSURE ALL NECESSARY SIGNING IS IN PLACE PRIOR TO ALTERING ANY TRAFFIC PATTERN.

LOCAL NOTES

- LN 1) NOTIFY THE ENGINEER THIRTY (30) CALENDAR DAYS PRIOR TO ANY TRAFFIC PATTERN ALTERATION.
- LN 2) NOTIFY THE RANDOLPH COUNTY SCHOOLS (336.318.6100) AT LEAST THIRTY (30) CALENDAR DAYS PRIOR TO ROAD CLOSURE.
- LN 3) NOTIFY THE RANDOLPH COUNTY EMERGENCY SERVICES (336.318.6911) AT LEAST THIRTY (30) CALENDAR DAYS PRIOR TO ROAD CLOSURE.

PHASING

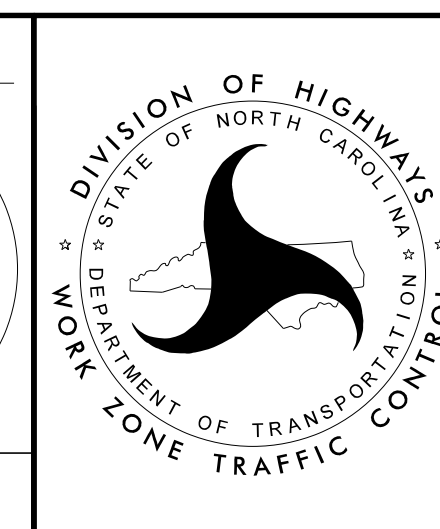
LOCAL ACCESS TO ALL RESIDENCES AND BUSINESSES SHALL BE MAINTAINED.

- STEP 1 - USING RSD 1101.03, SHEET 1 OF 9, AND SHEETS TMP-2 THRU TMP-4, CLOSE LOW BRIDGE RD (SR 2481) FOR BRIDGE 374 AND DETOUR TRAFFIC. SEE INSET A ON TMP-4.
- STEP 2 - REMOVE THE EXISTING STRUCTURE.
- CONSTRUCT THE PROPOSED STRUCTURE AND ROADWAY. USE TYPE III BARRICADES WITH "ROAD CLOSED" SIGN (R11-2) ATTACHED TO CLOSE PROPOSED -L- APPROACH AT -L- 26+25+/-.
- STEP 3 - PLACE FINAL PAVEMENT MARKINGS ACCORDING TO THE PAVEMENT MARKING PLANS.
- STEP 4 - REMOVE ALL ROAD CLOSURE SIGNS AND DEVICES INSTALLED AS SHOWN IN INSET A ON TMP-4.
- STEP 5 - USING RSD 1101.03, SHEET 1 OF 9 AND INSET B ON TMP-4, INSTALL ALL ROAD CLOSURE SIGNS AND DEVICES.
- STEP 6 - REMOVE THE EXISTING STRUCTURE.
- CONSTRUCT PROPOSED STRUCTURE AND ROADWAY.
- STEP 7 - PLACE FINAL PAVEMENT MARKINGS ACCORDING TO THE PAVEMENT MARKING PLANS.
- STEP 8 - REMOVE ALL TRAFFIC CONTROL DEVICES AND OPEN LOW BRIDGE RD (SR 2481) TO TRAFFIC.

B-5360

B-5546

APPROVED: <i>David Bisette</i> <small>E00090807548C...</small>	
DATE: 7/1/2016	
DOCUMENT NOT CONSIDERED FINAL UNLESS ALL SIGNATURES COMPLETED	



TRANSPORTATION
OPERATIONS PLAN
AND PHASING

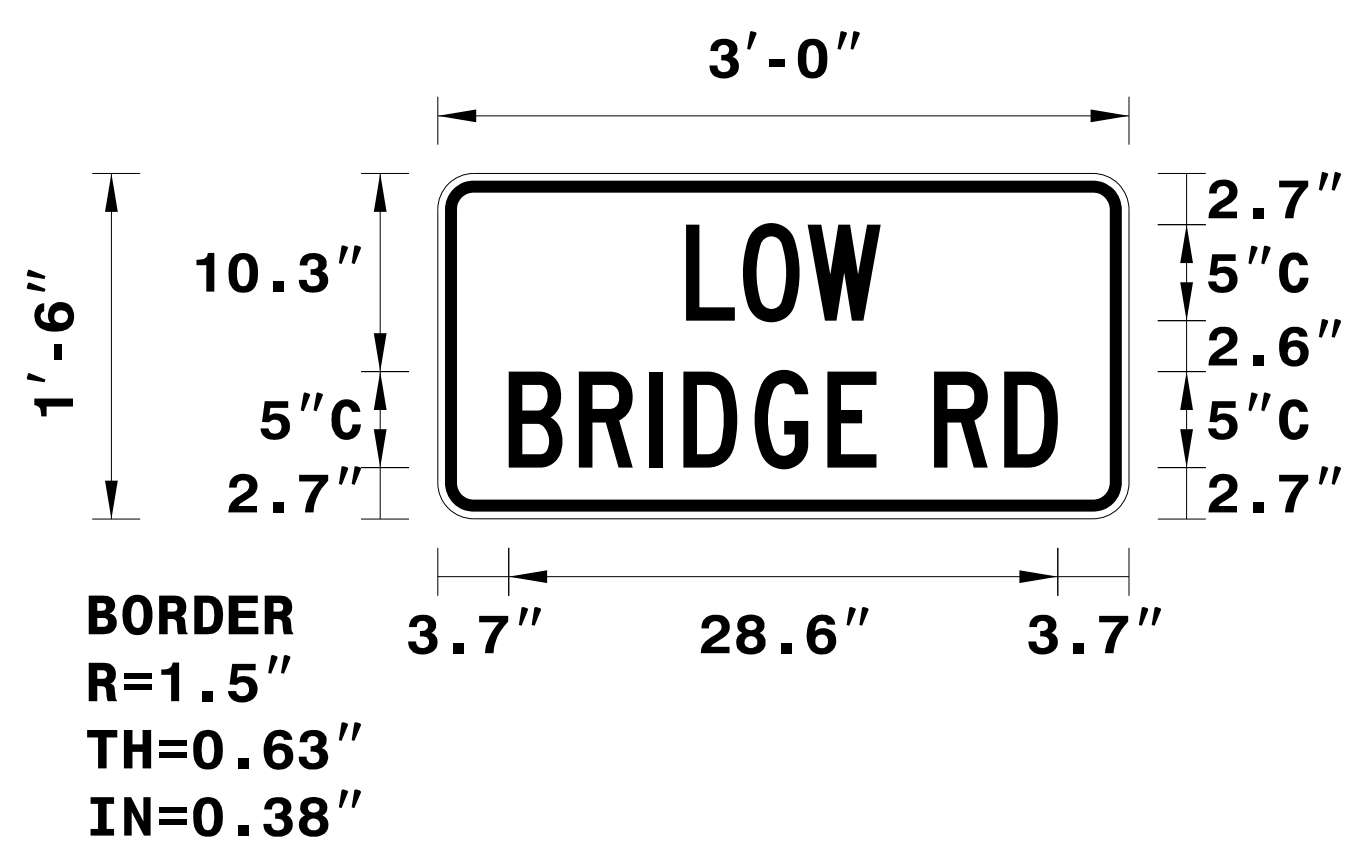
SIGN NUMBER: WORKZONE
TYPE: STATIONARY
QUANTITY: SEE PLANS
SIGN WIDTH: 3'-0"
HEIGHT: 1'-6"
TOTAL AREA: 4.5 Sq.Ft.
BORDER TYPE: INSET
RECESS: 0.38"
WIDTH: 0.63"
RADII: 1.5"
NO. Z BARS:
LENGTH:

BACKG COLOR: Fluorescent Orange
COPY COLOR: Black

SYMBOL	X	Y	WID	HT

MAT'L: 0.080" (2.0 mm) ALUMINUM

DESIGN BY: S.JOHNS
PROJECT ID: B-5360 / B-5546
CHECKED BY: R.KING
DIV: 8
DATE: Oct 23, 2014



USE NOTES: 1,2
 1. Legend and border shall be direct applied black non-reflective sheeting.
 2. Background shall be NC GRADE B fluorescent orange retroreflective sheeting.

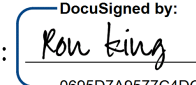


Spacing Factor is 1 unless specified otherwise

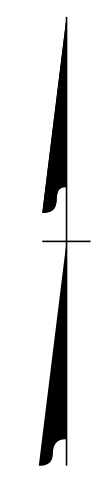
LETTER POSITIONS

Letter spacings are to start of next letter													Series/Size
													Text Length
	L	O	W										C 2000
12.9	3	3.4	3.8	12.9									10.1
	B	R	I	D	G	E		R	D				C 2000
3.7	3.6	3.6	1.8	3.7	3.8	2.6	3	3.6	2.8	3.7			28.6

FILENAME: B-5360_WZSgn Design NORTH CAROLINA D.O.T. SIGN DETAIL

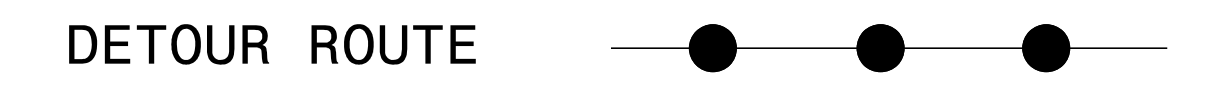
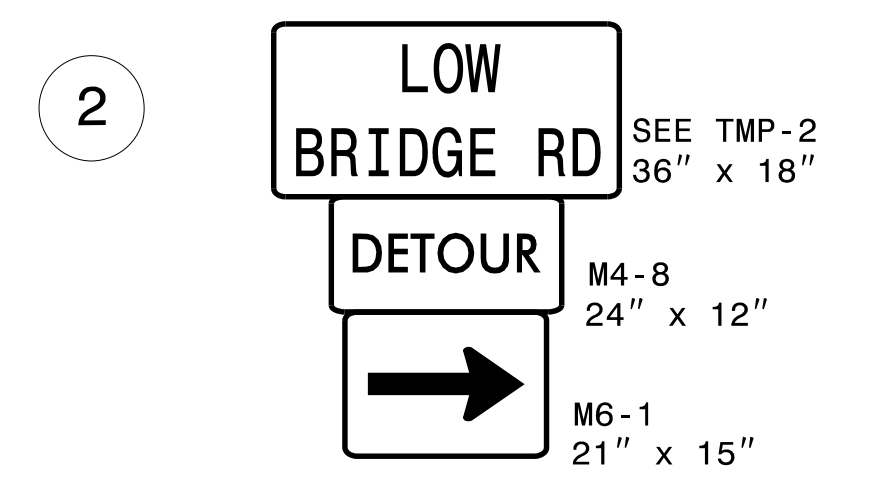
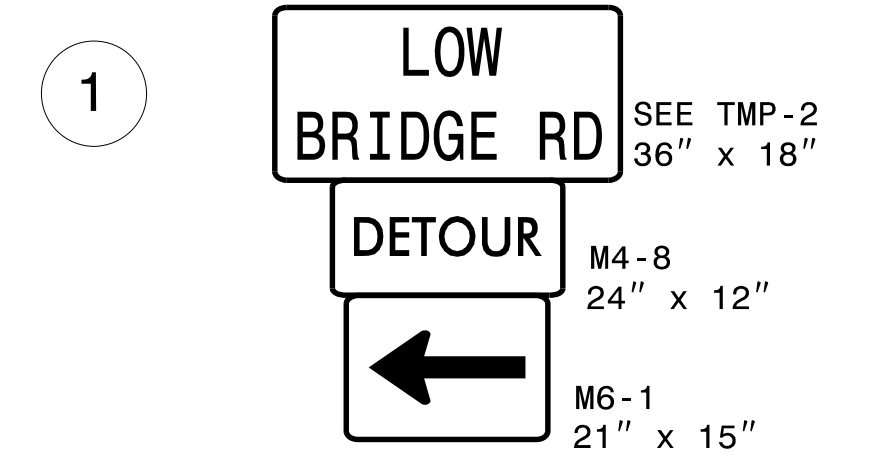
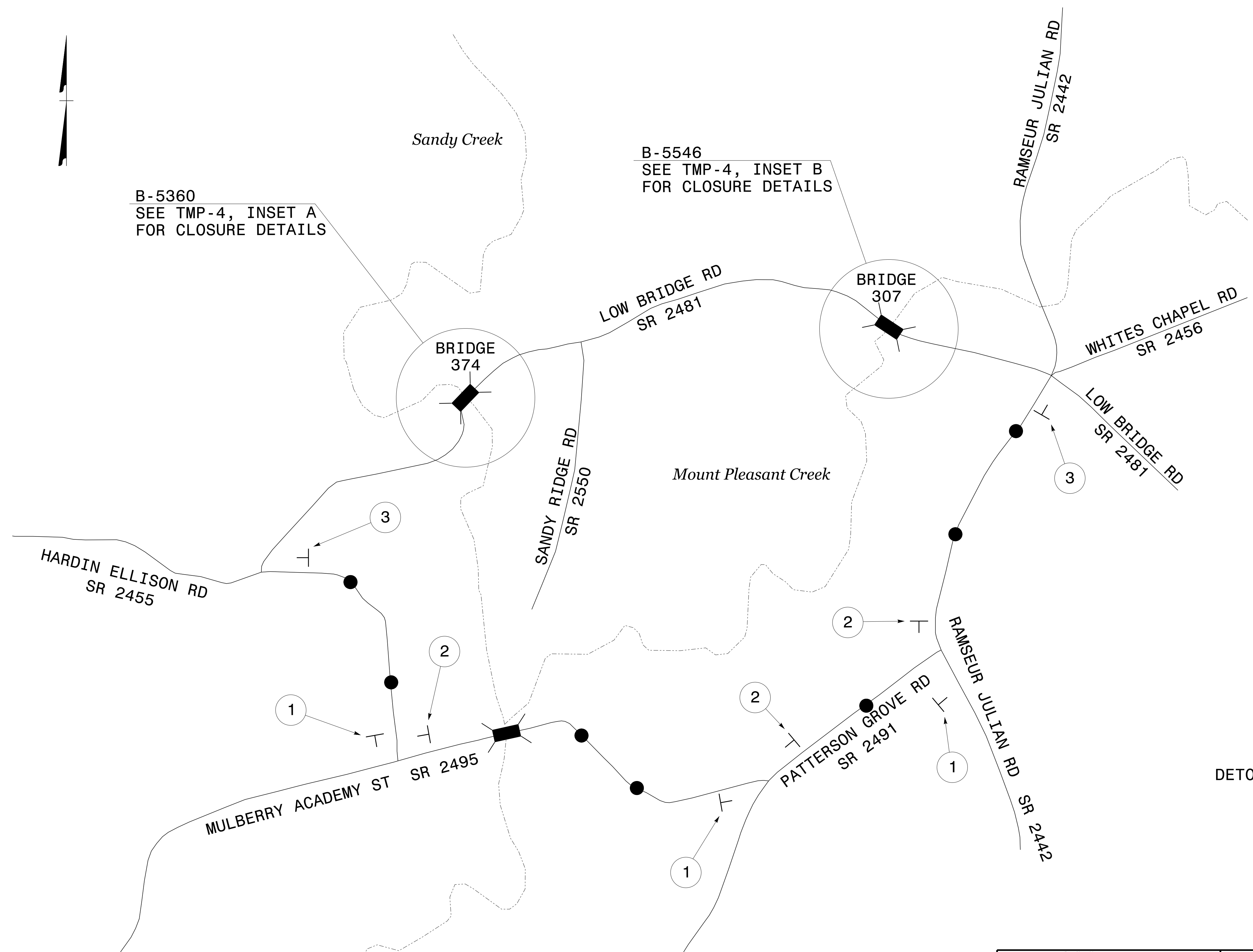
5/10/2016
 R:\ip\projects-B\B5360\TrafficControl\TCP\B-5360_5546_TC_TMP_02.dgn
 User: dertchardson

APPROVED:  DATE: 5/10/2016			SPECIAL SIGN DESIGN
DOCUMENT NOT CONSIDERED FINAL UNLESS ALL SIGNATURES COMPLETED			



B-5360
SEE TMP-4, INSET A
FOR CLOSURE DETAILS

B-5546
SEE TMP-4, INSET B
FOR CLOSURE DETAILS

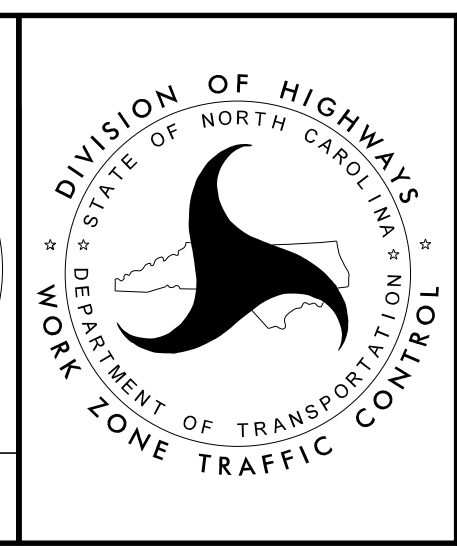


6/30/2016
 R:\TIP\Projects-B\B5360\TrafficControl\TCP\B-5360.5546.TC.TMP.03.dgn
 User:derichardson

APPROVED: *David Bisette*
ECCD090C875348C...

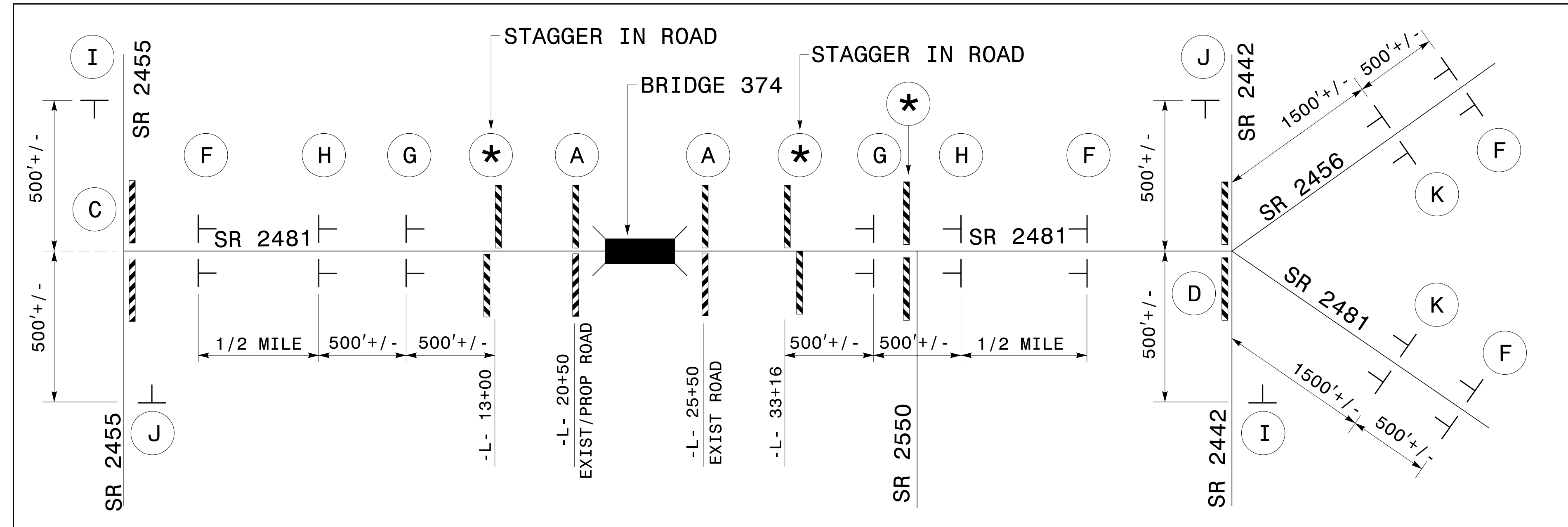
DATE: 6/30/2016

**DOCUMENT NOT CONSIDERED FINAL
UNLESS ALL SIGNATURES COMPLETED**

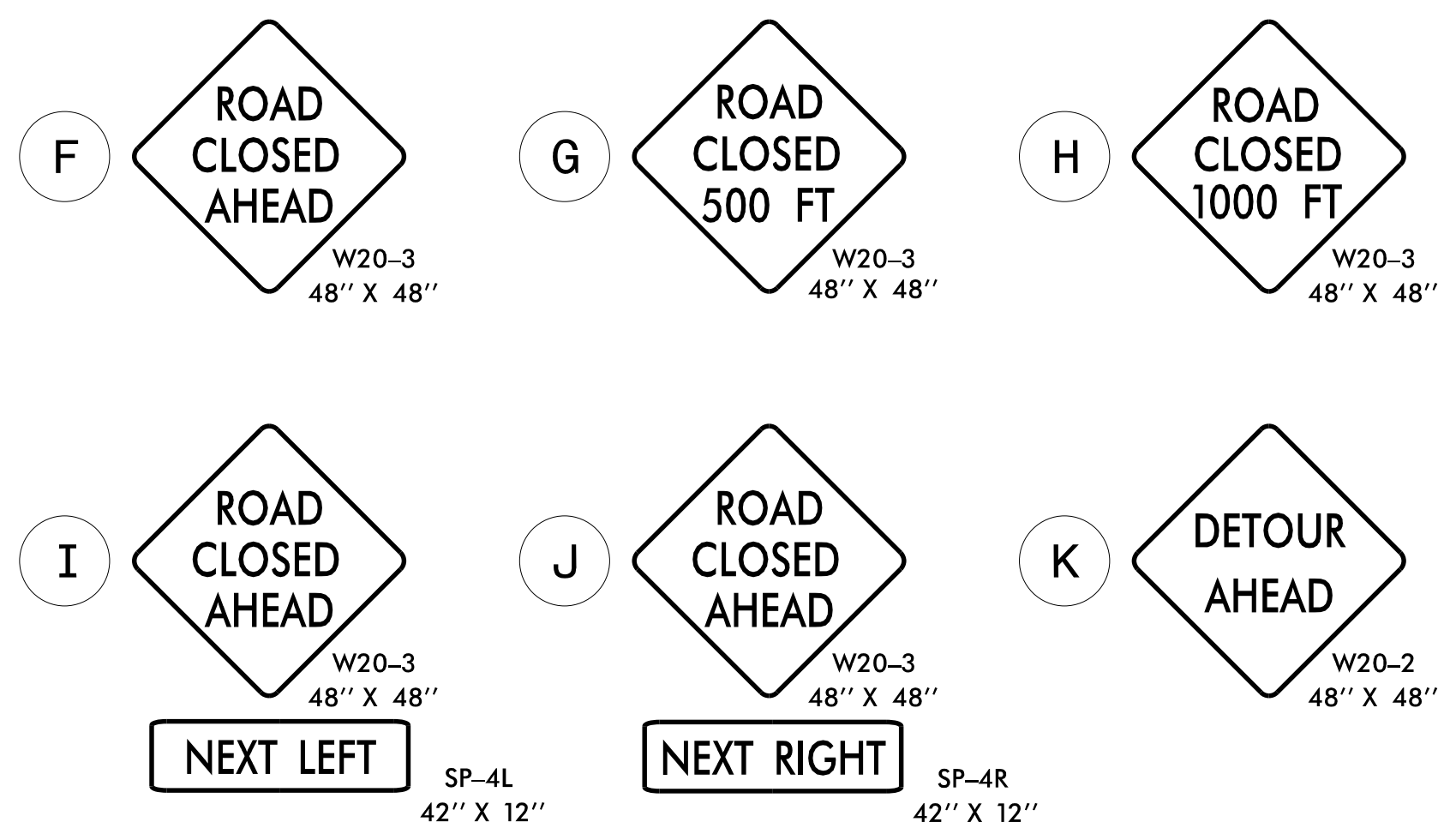
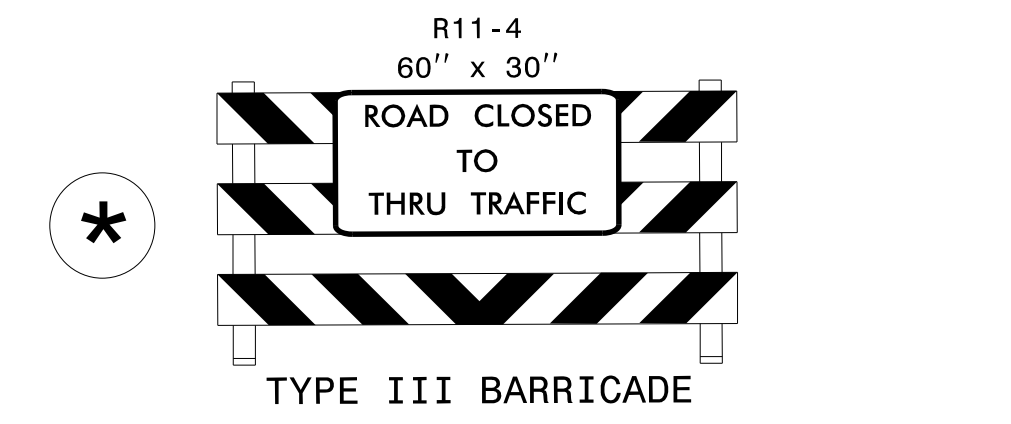
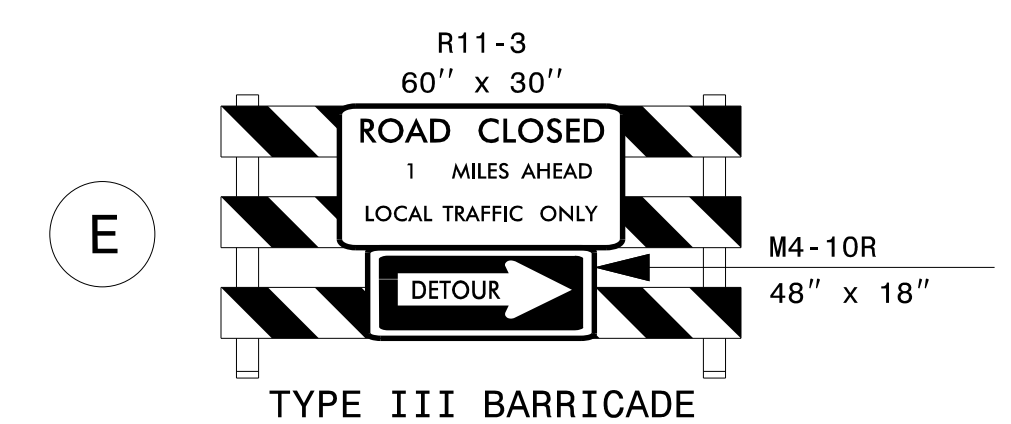
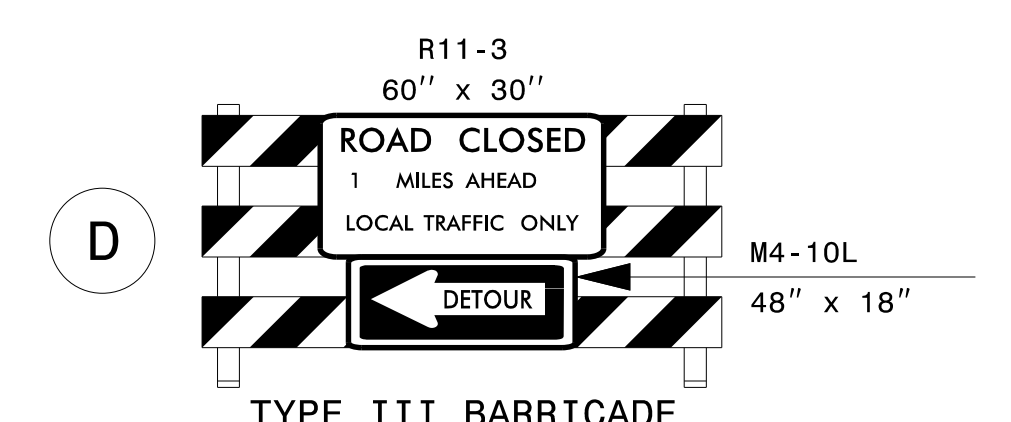
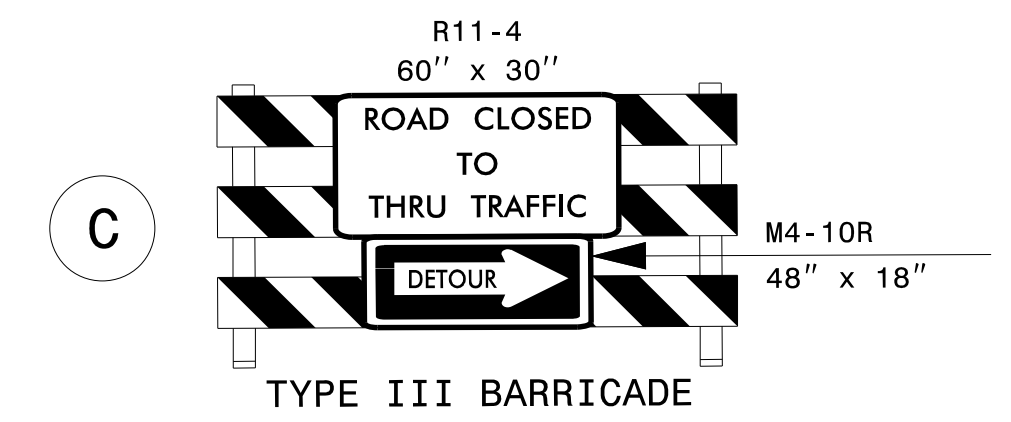
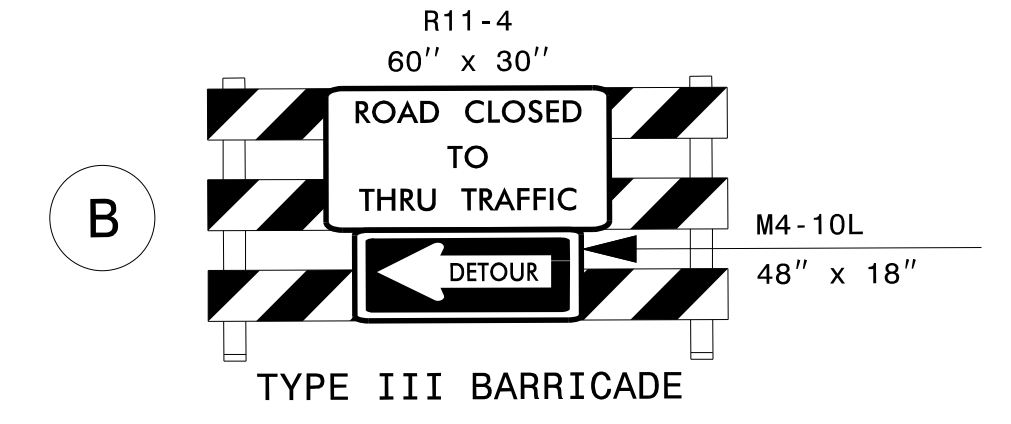
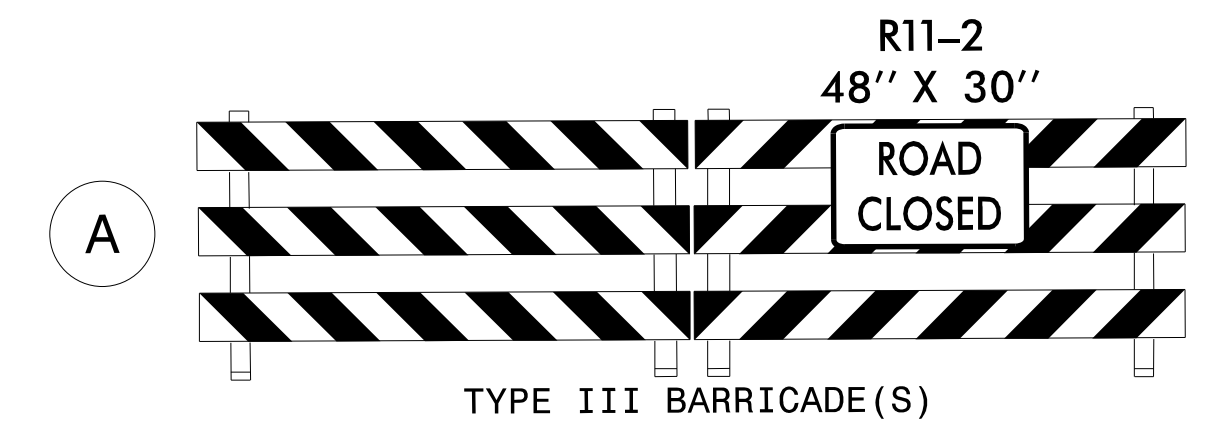
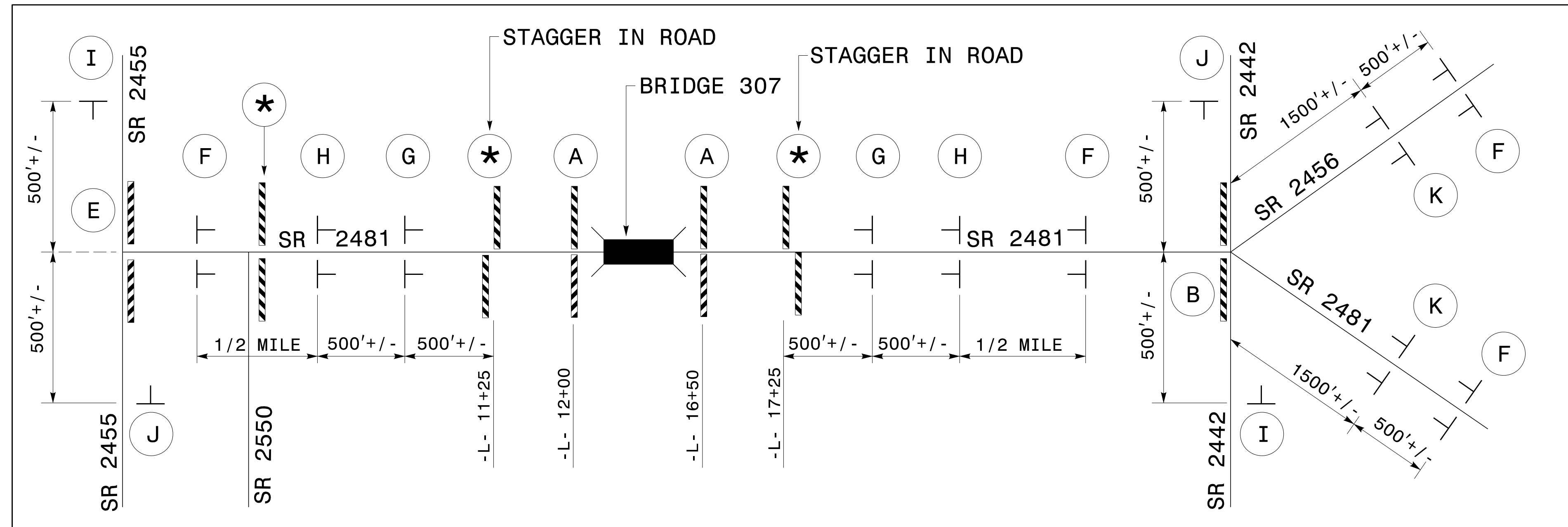


OFFSITE DETOUR ROUTE

B-5360 INSET A (STEPS 1-4)



B-5546 INSET B (STEPS 5-8)



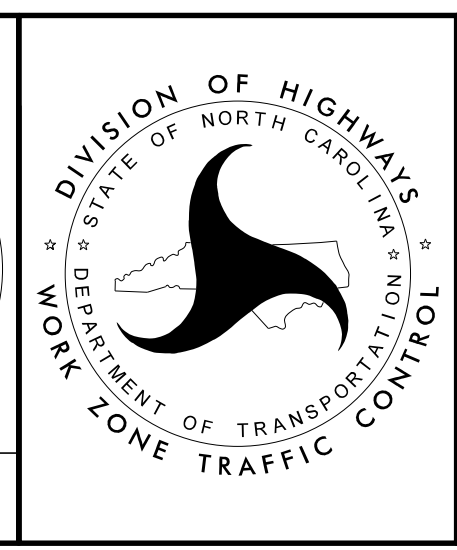
- NOTES:
- 1) SEE SHEET TMP-3 FOR DETOUR ROUTE.
 - 2) REFER TO RSD 1101.03, SHEET 1 OF 9 FOR APPLICABLE NOTES.
 - 3) ALL DETOUR SIGN LOCATIONS ARE APPROXIMATE.

APPROVED: *David Bisette*
ECCDC080875348C...

DATE: 6/30/2016

SEAL 030864
ENGINEER
DAVID W. BISSETTE

DOCUMENT NOT CONSIDERED FINAL UNLESS ALL SIGNATURES COMPLETED



ROAD CLOSURE DETAILS

6/30/2016 R:\TIP\Projects-B\B5360\TrafficControl\TCP\B-5360_5546_TC_TMP_04.dgn User:derickardson