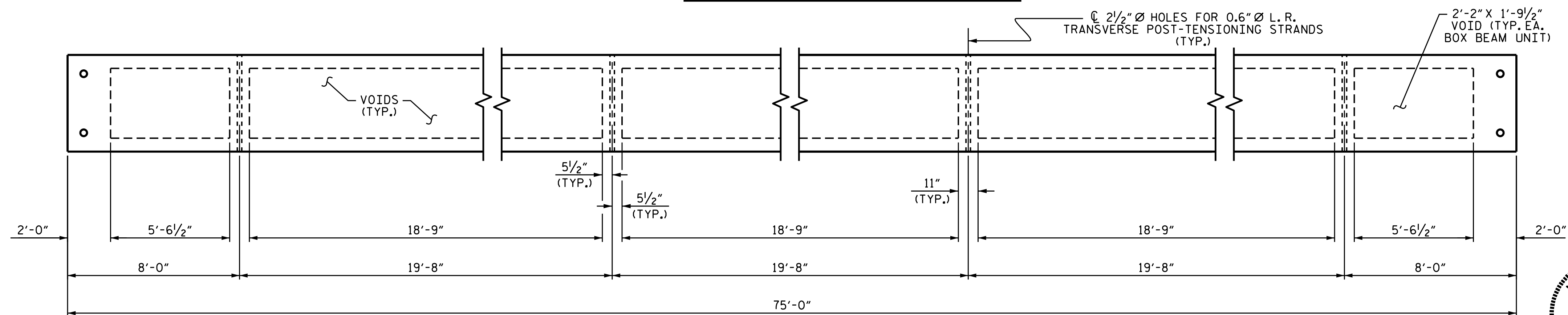


PLAN OF UNIT



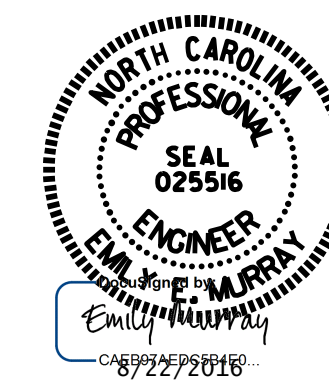
DIAPHRAGM AND VOID LAYOUT

PROJECT NO. B-5546
 RANDOLPH COUNTY
 STATION: 13+56.00-L-

SHEET 2 OF 5

STATE OF NORTH CAROLINA
 DEPARTMENT OF TRANSPORTATION
 RALEIGH

PLAN OF 75' UNIT
 27'-10" CLEAR ROADWAY
 90° SKEW



ASSEMBLED BY : D.A. DAVENPORT DATE : 10/08/14
 CHECKED BY : J.K. BOWLES DATE : 01/14/15
 DRAWN BY : DGE 8/11 REV. 8/14 MAA/TMG
 CHECKED BY : TMG 11/11

DOCUMENT NOT CONSIDERED
 FINAL UNLESS ALL
 SIGNATURES COMPLETED

REVISIONS						SHEET NO.
NO.	BY:	DATE:	NO.	BY:	DATE:	TOTAL SHEETS
1			3			5-28
2			4			38