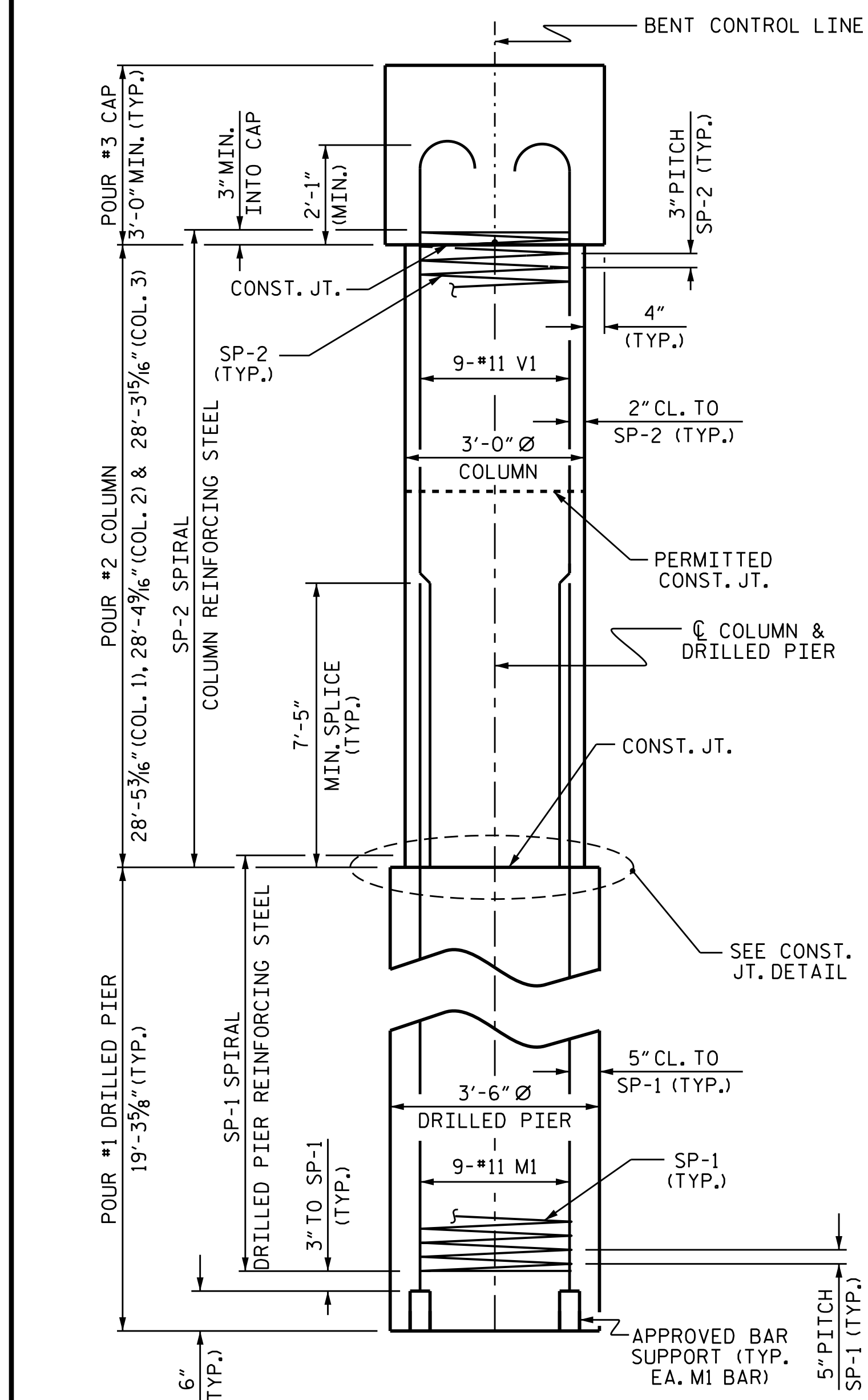
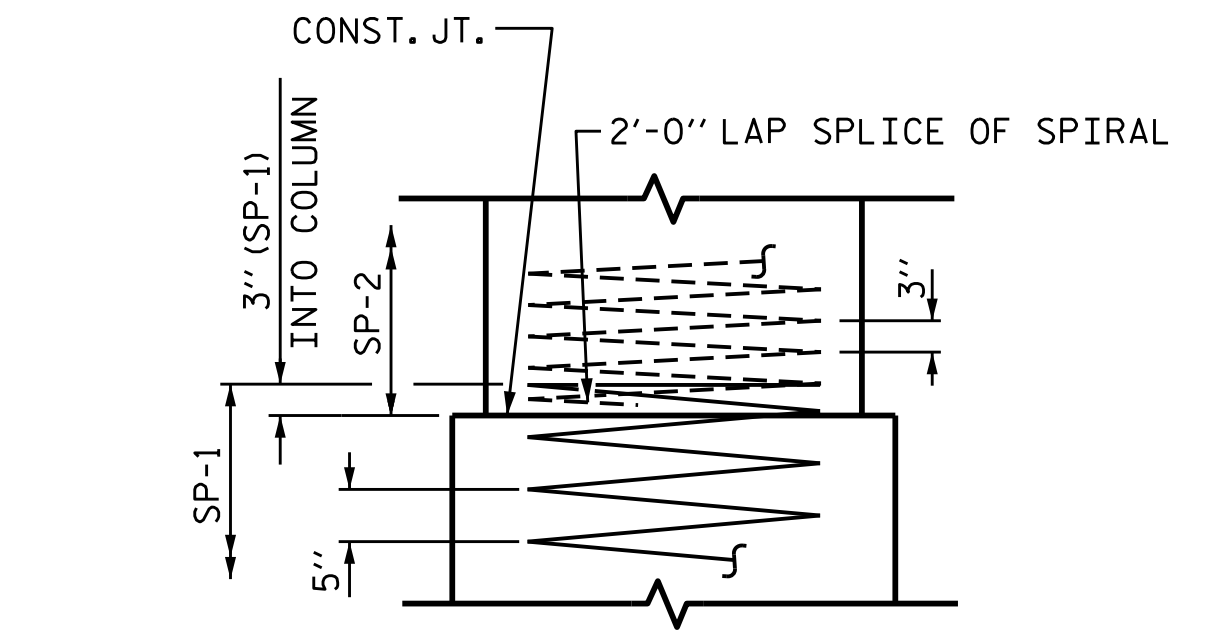


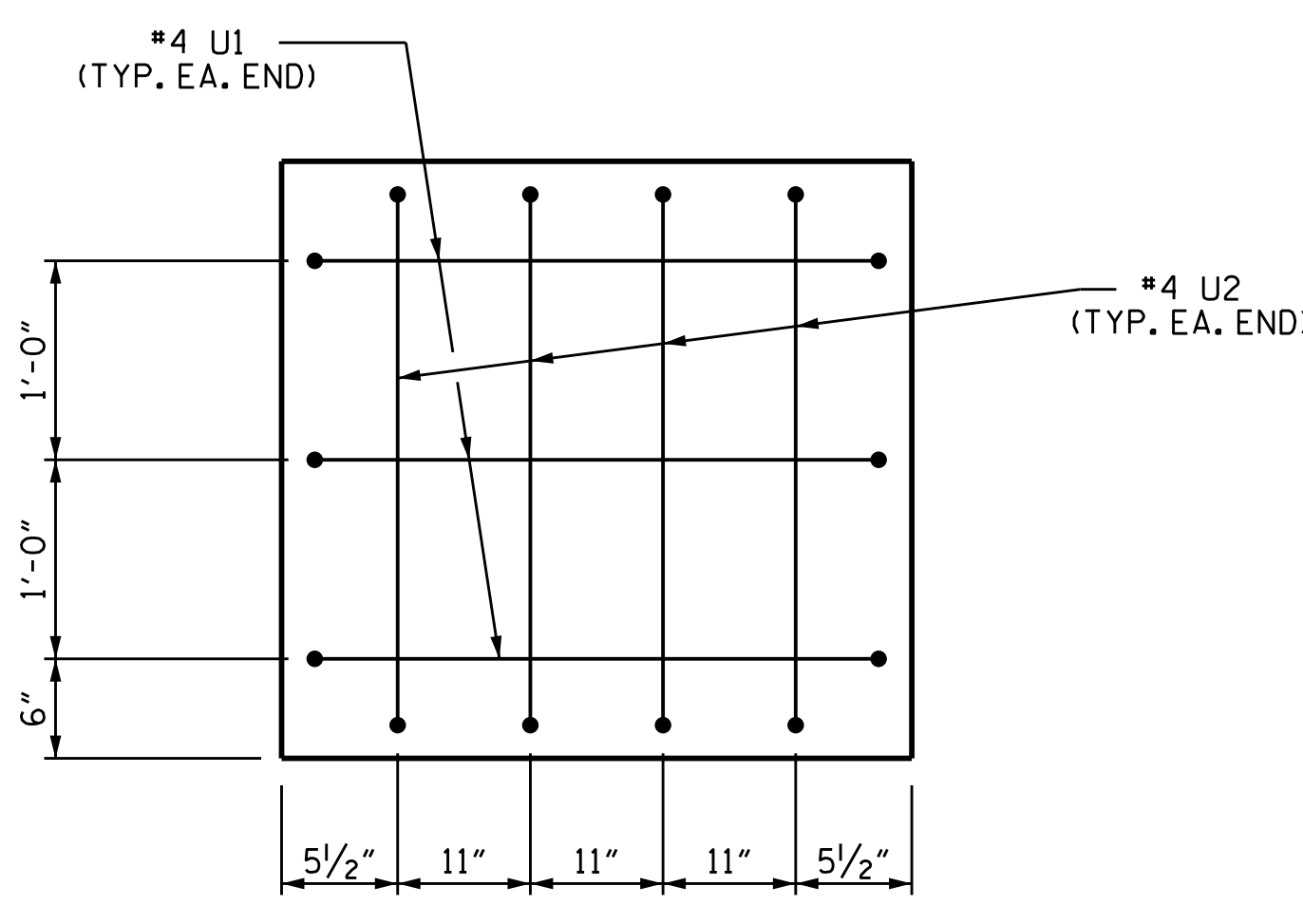
PLAN OF DRILLED PIERS & COLUMNS



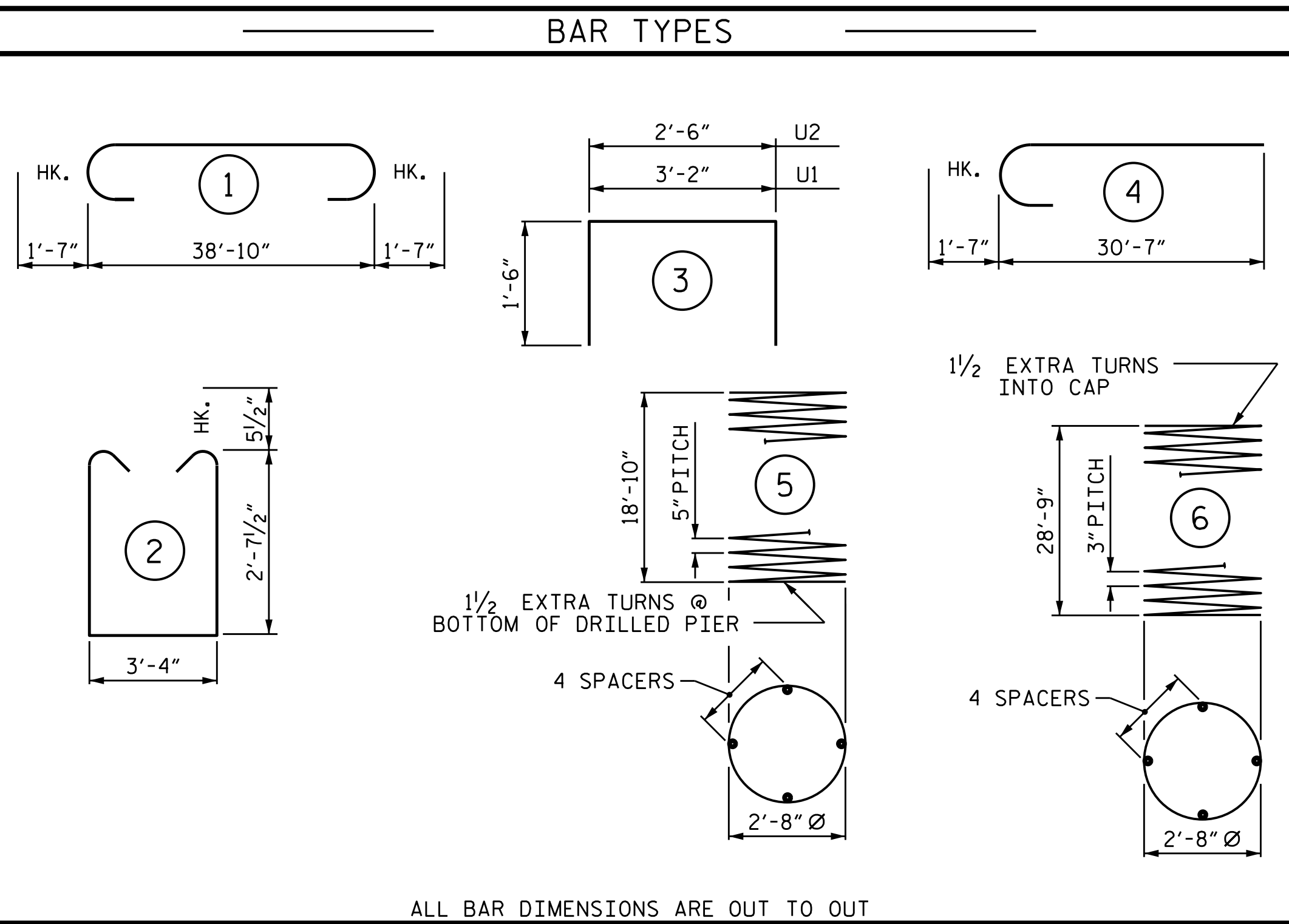
END ELEVATION



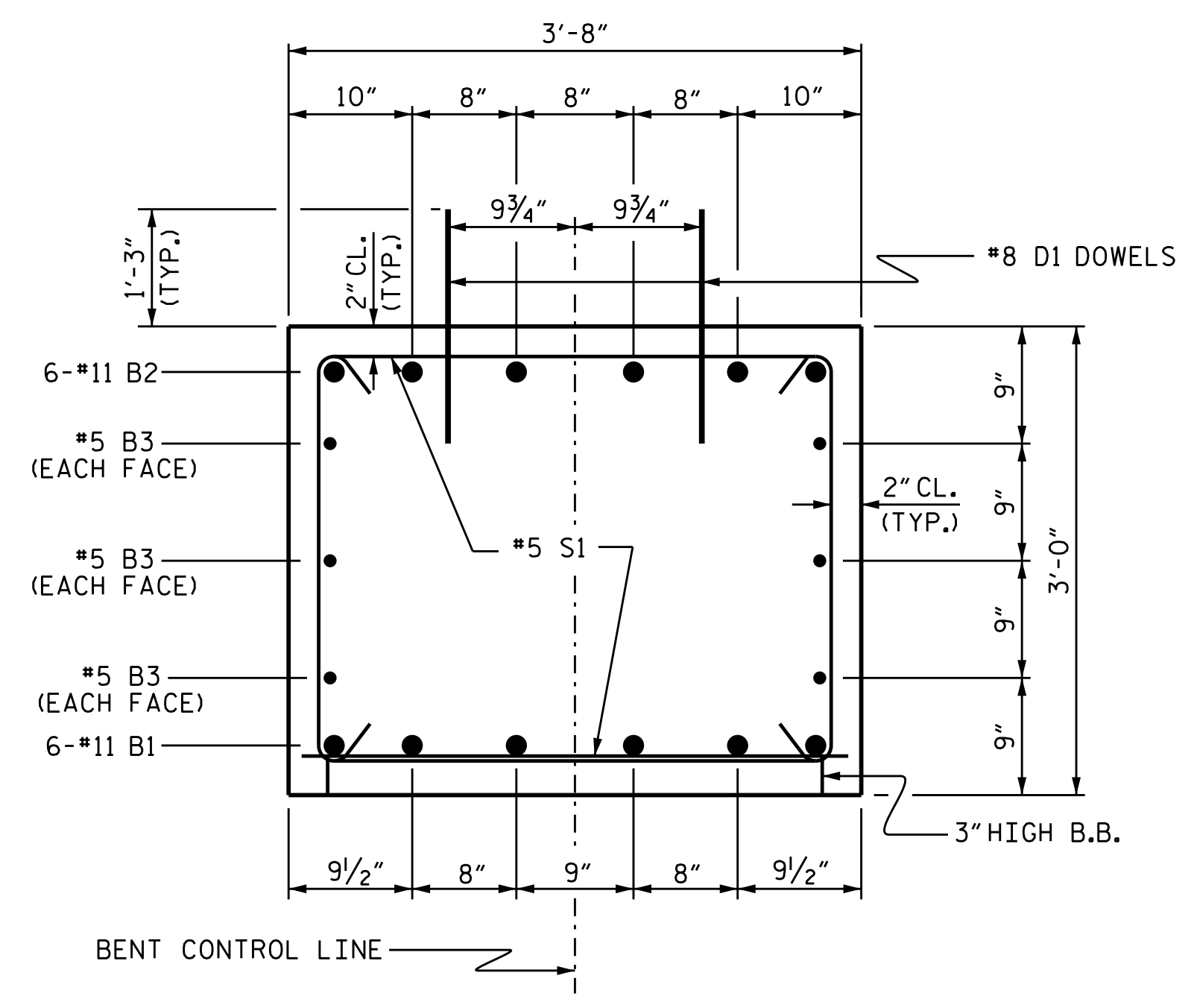
CONSTRUCTION JOINT DETAIL



END OF CAP VIEW
(TYPICAL BOTH ENDS)



ALL BAR DIMENSIONS ARE OUT TO OUT



SECTION A-A

BILL OF MATERIAL FOR ONE BENT					
BAR	NO.	SIZE	TYPE	LENGTH	WEIGHT
B1	6	#11	STR	39'-0"	1243
B2	6	#11	1	42'-0"	1339
B3	6	#5	STR	39'-0"	244
D1	40	#8	STR	2'-3"	240
M1	27	#11	STR	29'-3"	4196
S1	62	#5	2	9'-6"	614
U1	6	#4	3	6'-2"	25
U2	8	#4	3	5'-6"	29
V1	27	#11	4	32'-2"	4614
REINFORCING STEEL (FOR ONE BENT)					12,544 LBS.
SP-1	3	*	5	384'-6"	1203 LBS.
SP-2	3	**	6	958'-11"	1922 LBS.
SPIRAL COLUMN REINFORCING STEEL (FOR ONE BENT)					3125 LBS.
* THE SP-1 SPIRAL REINFORCING STEEL SHALL BE W31 OR D-31 COLD DRAWN WIRE OR #5 PLAIN OR DEFORMED BAR					
** THE SP-2 SPIRAL REINFORCING STEEL SHALL BE W20 OR D-20 COLD DRAWN WIRE OR #4 PLAIN OR DEFORMED BAR					
CLASS A CONCRETE BREAKDOWN (FOR ONE BENT)					
POUR #2 (COLUMNS)					22.3 C.Y.
POUR #3 (CAP)					16.0 C.Y.
TOTAL CLASS A CONCRETE					38.3 C.Y.
DRILLED PIERS: (FOR ONE BENT)					
DRILLED PIER CONCRETE POUR #1 (DRILLED PIERS)					20.6 C.Y.
3'-6" Ø DRILLED PIERS NOT IN SOIL					40 LIN. FT.
3'-6" Ø DRILLED PIERS IN SOIL					17.9 LIN. FT.
CSL TUBES					249.6 LIN. FT.

PROJECT NO. B-5360
 RANDOLPH COUNTY
 STATION: 23+68.00 -L-

SHEET 2 OF 2



STATE OF NORTH CAROLINA
 DEPARTMENT OF TRANSPORTATION
 RALEIGH

SUBSTRUCTURE
 BENT No. 2

ASSEMBLED BY: A. K. PATEL DATE: 12/4/15
 CHECKED BY: W. F. PARKER DATE: 3/16
 DESIGN ENGINEER OF RECORD: K. P. SEDA DATE: 6/16
 DRAWN BY: DGE 3/10
 CHECKED BY: MKT 3/10
 REV. 11/14 MAA/TMG

REVISIONS						SHEET NO.
NO.	BY:	DATE:	NO.	BY:	DATE:	S-20
1			3			TOTAL SHEETS
2			4			38

DOCUMENT NOT CONSIDERED FINAL UNLESS ALL SIGNATURES COMPLETED