

STATE	PROJECT NO.	SHEET NO.	TOTAL SHEETS
N.C.	I-5768	22	
WBS NO.	5304.3.1		

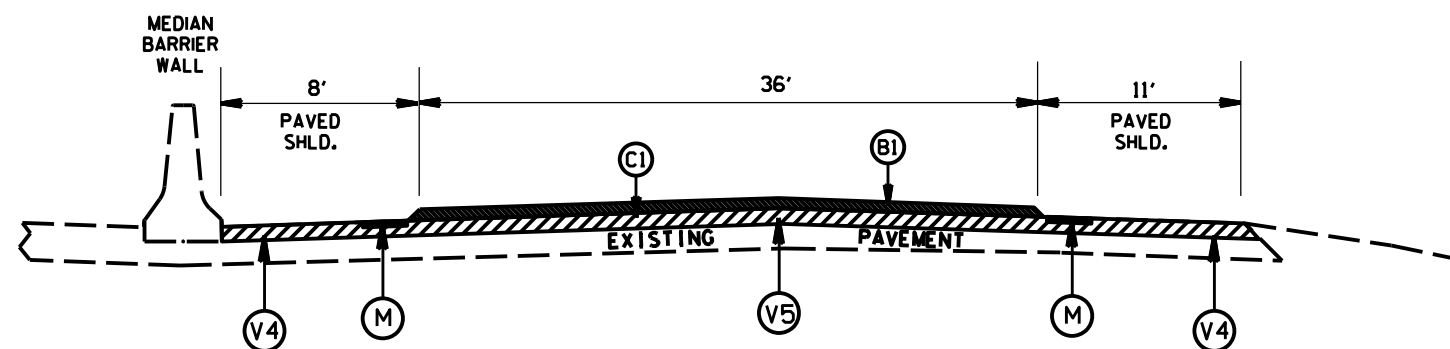
Notes:

MAINLINE TYPICALS 44-49 APPLY TO I-77 NORTHBOUND AND SOUTHBOUND UNDER THE BRIDGES AT I-485 INTERCHANGE AND NATIONS FORD RD INTERCHANGE. THE COMBINATION OF MILLING AND REPLACING ASPHALT PAVEMENT TO THE EXISTING GRADE IS NECESSARY TO MAINTAIN THE EXISTING BRIDGE CLEARANCE.

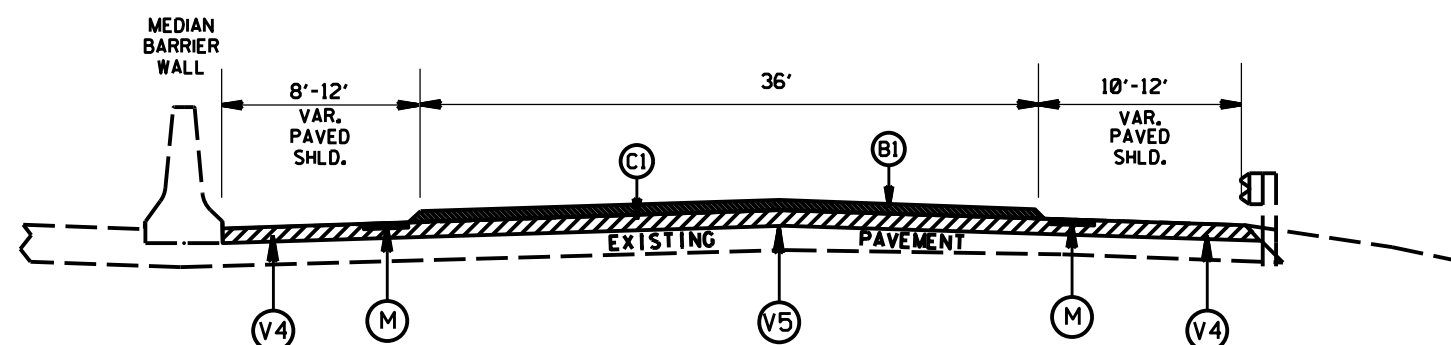
THE EXISTING MAINLINE HAS AN OPEN GRADED FRICTION COURSE OF APPROXIMATELY 5/8" AS PART OF THE PAVEMENT STRUCTURE IN THE TRAVEL LANES. TYPICALS 44-49 SHOW A MILLING DEPTH OF 2.5" IN THE TRAVEL LANES WHERE THE 5/8" FRICTION COURSE EXISTS AND A 2" MILLING DEPTH ON THE SHOULDERS. THE USE OF THESE MILLING DEPTHS ARE INTENDED TO MAINTAIN THE EXISTING GRADE AFTER THE PROPOSED PAVEMENT STRUCTURE IS PLACE.

TYPICALS 44-49 WILL APPLY TO THE AREA OF I-77 500' ON BOTH SIDES OF THE BRIDGES AT THE I-485 AND NATIONS FORD RD INTERCHANGES.

TRANSITION THE MILLING FROM 1.5" TO 2.5" OVER THE COARSE OF 100' ON EACH END OF THE 1000' WHERE TYPICALS 44-49 APPLY.



TYPICAL SECTION NO.44



TYPICAL SECTION NO.45

PAVEMENT SCHEDULE	
B1	PROP. APPROX. 5/8" ULTRATHIN HOT MIX ASPHALT COURSE, AT AN AVERAGE RATE OF 70 LBS. PER SQ. YD.
C1	PROP. APPROX. 2.0" ASPHALT CONCRETE SURFACE COURSE, TYPE S9.5D, AT AN AVERAGE RATE OF 224 LBS. PER SQ. YD.
C2	PROP. APPROX. 1.5" ASPHALT CONCRETE SURFACE COURSE, TYPE S9.5C, AT AN AVERAGE RATE OF 168 LBS. PER SQ. YD.
V1	MILLING 1.5" DEPTH
V2	PROFILE MILLING, 0" TO 1.5" DEPTH
V3	PROFILE MILLING, 1.5" TO 2.0" DEPTH
V4	MILLING, 2.0" DEPTH
V5	MILLING, 2.5" DEPTH
T	SHOULDER RECONSTRUCTION
M	MILLED RUMBLE STRIPS

I-5768 Interstate 77 Pavement Rehabilitation

SCALE	-NA-		REVISIONS
DATE	8/16		
DWG. BY	TJP		
DESIGN BY	TJP		
APPROVED	WAT		