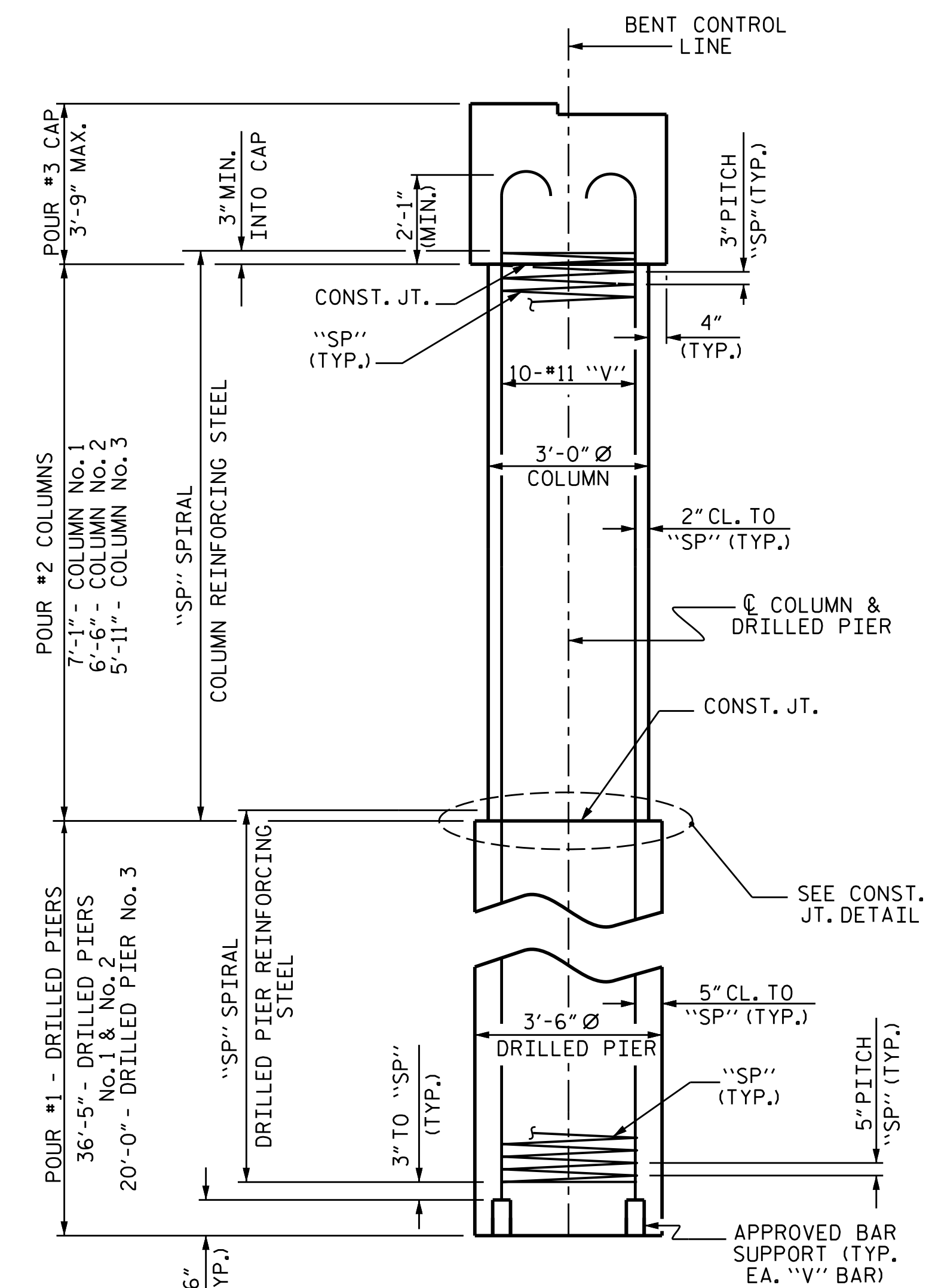
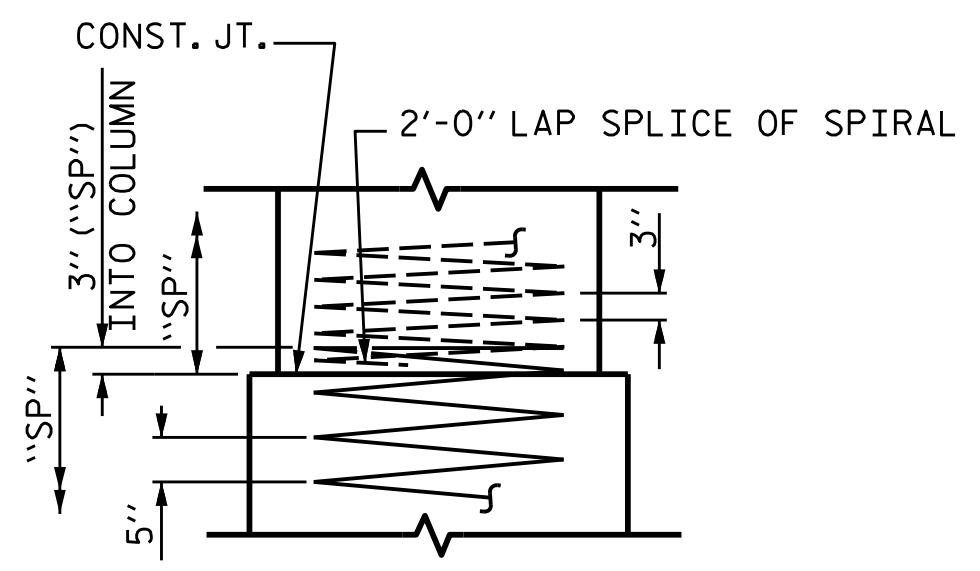


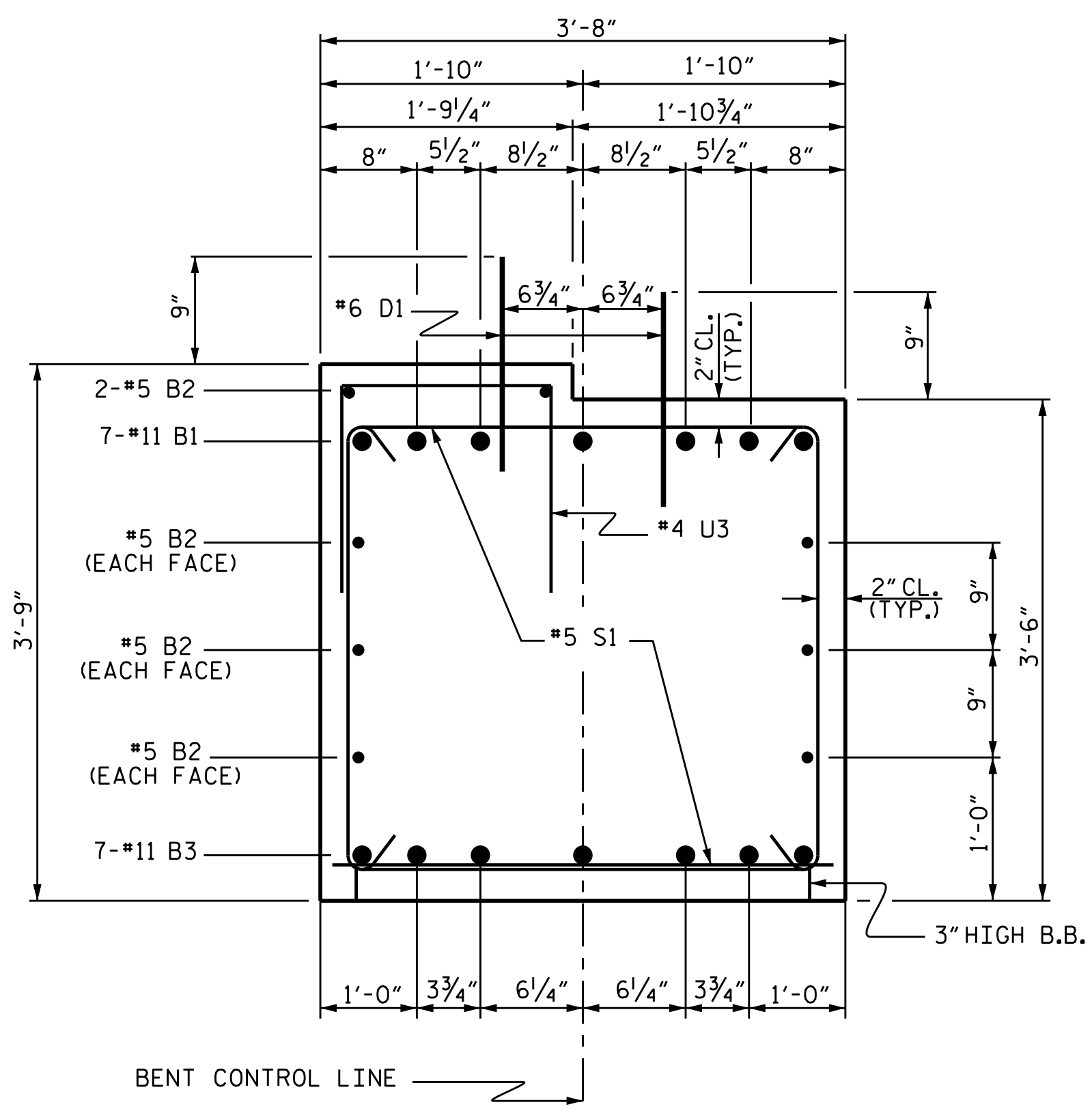
PLAN OF DRILLED PIERS & COLUMNS



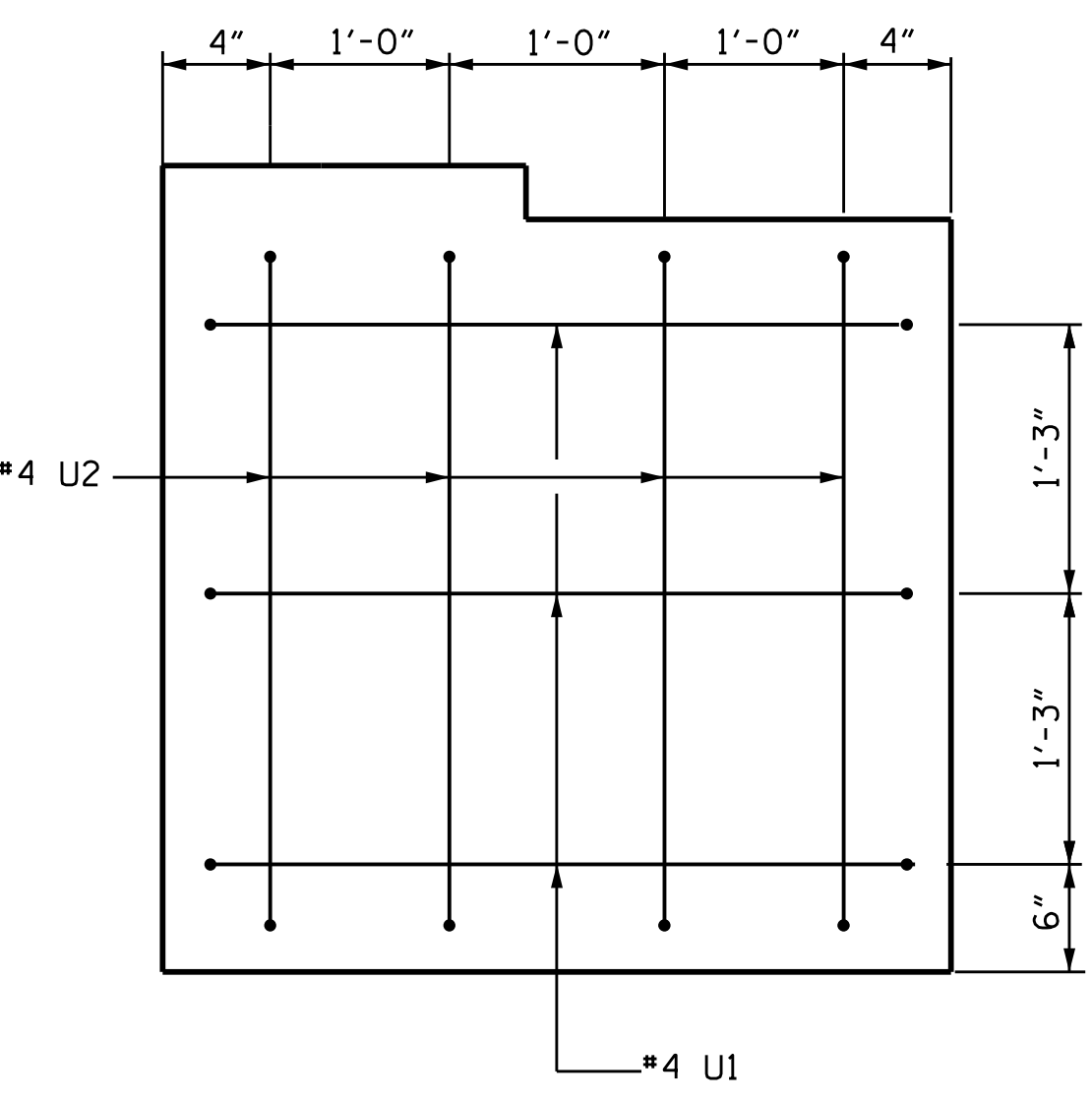
END ELEVATION



CONSTRUCTION JOINT DETAIL

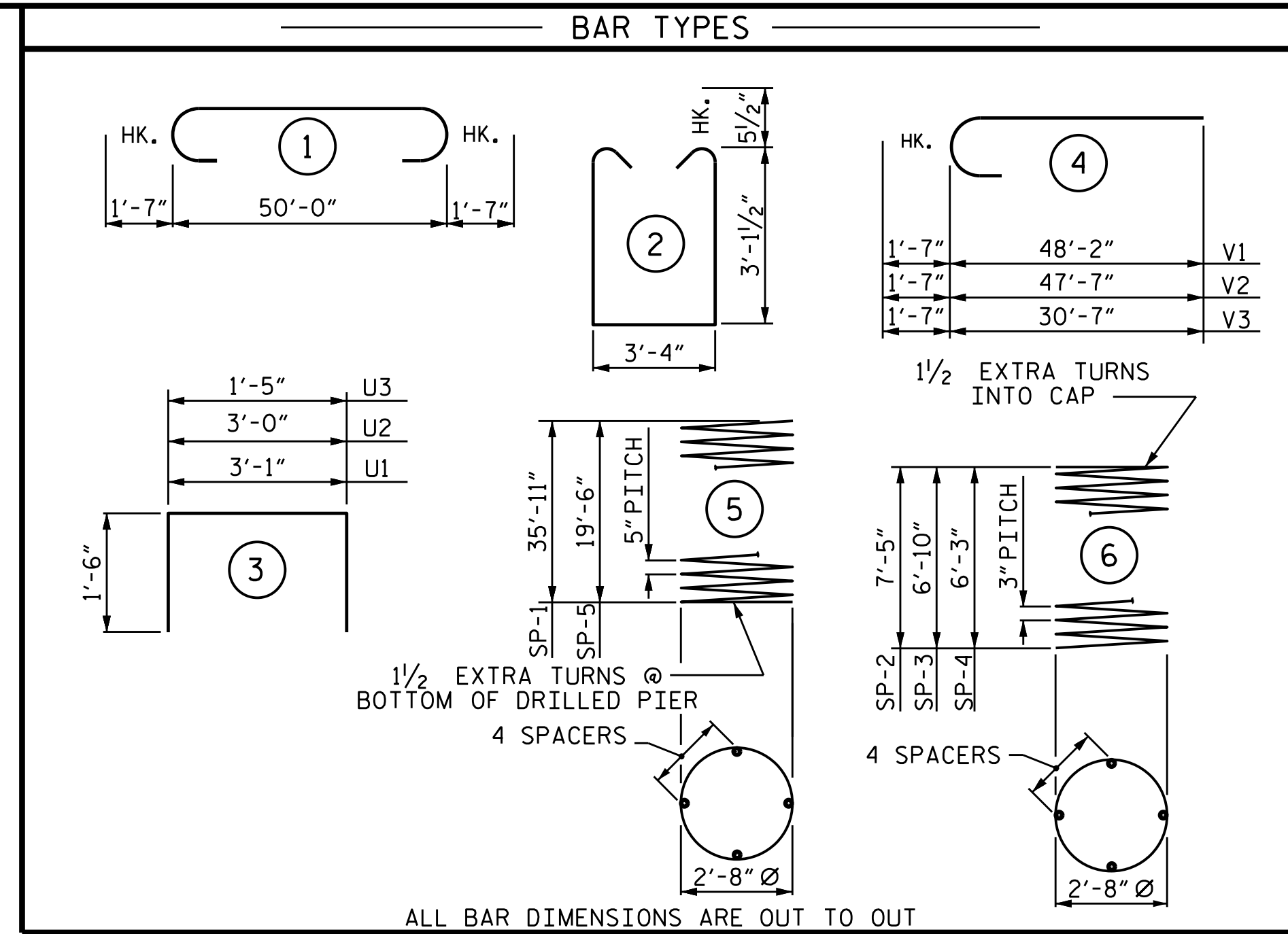


SECTION A-A



END OF CAP VIEW

TYPICAL BOTH ENDS



ALL BAR DIMENSIONS ARE OUT TO OUT

BILL OF MATERIAL

BENT No. 1

BAR NO.	SIZE	TYPE	LENGTH	WEIGHT
B1	#11	1	53'-2"	1977
B2	#5	STR	50'-2"	419
B3	#11	STR	50'-2"	1866
D1	#6	STR	1'-6"	144
S1	#5	2	10'-6"	789
U1	#4	3	6'-1"	24
U2	#4	3	6'-0"	32
U3	#4	3	4'-5"	148
V1	#11	4	49'-9"	2643
V2	#11	4	49'-2"	2612
V3	#11	4	32'-2"	1709

REINFORCING STEEL 12363 LBS.

SP-1	2	*	5	721'-9"	1506
SP-2	1	**	6	255'-10"	171
SP-3	1	**	6	237'-3"	158
SP-4	1	**	6	218'-8"	146
SP-5	1	*	5	398'-11"	416

SPIRAL COLUMN REINFORCING STEEL 2397 LBS.

* THE SP-1 & SP-5 SPIRAL REINFORCING STEEL SHALL BE W31 OR D-31 COLD DRAWN WIRE OR #5 PLAIN OR DEFORMED BAR
 ** THE SP-2 THRU SP-4 SPIRAL REINFORCING STEEL SHALL BE W20 OR D-20 COLD DRAWN WIRE OR #4 PLAIN OR DEFORMED BAR

CLASS A CONCRETE BREAKDOWN
 POUR #2 (COLUMNS) 5.1 C.Y.
 POUR #3 (CAP) 24.8 C.Y.
 TOTAL CLASS A CONCRETE 29.9 C.Y.

DRILLED PIERS:
 DRILLED PIER CONCRETE
 POUR #1 (DRILLED PIERS) 33.1 C.Y.
 3'-6" Ø DRILLED PIERS NOT IN SOIL 27.00 LIN. FT.
 3'-6" Ø DRILLED PIERS IN SOIL 65.83 LIN. FT.
 PERMANENT STEEL CASING FOR 3'-6" Ø DRILLED PIERS 66.15 LIN. FT.
 CSL TUBES 389.33 LIN. FT.

PROJECT NO. B-5125
 MACON COUNTY
 STATION: 13+25.89 -L-

SHEET 2 OF 2

STATE OF NORTH CAROLINA
 DEPARTMENT OF TRANSPORTATION
 RALEIGH

SUBSTRUCTURE
 BENT No. 1



DRAWN BY: M. POOLE DATE: 10-15
 CHECKED BY: B. N. GRADY DATE: 3-16
 DESIGN ENGINEER OF RECORD: W. J. HARRIS DATE: 5-16

DOCUMENT NOT CONSIDERED FINAL UNLESS ALL SIGNATURES COMPLETED

REVISIONS						SHEET NO.
NO.	BY:	DATE:	NO.	BY:	DATE:	TOTAL SHEETS
1			3			S-29
2			4			43