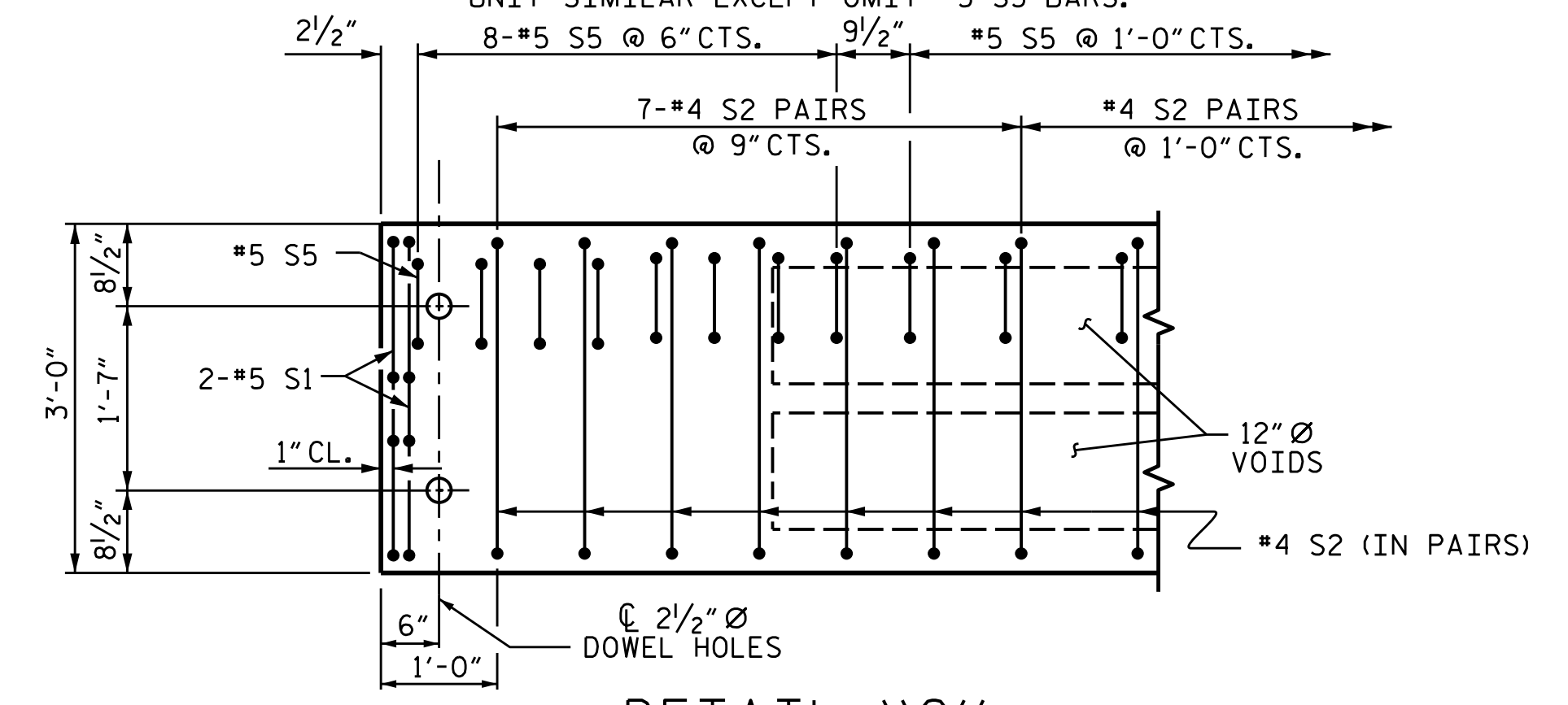
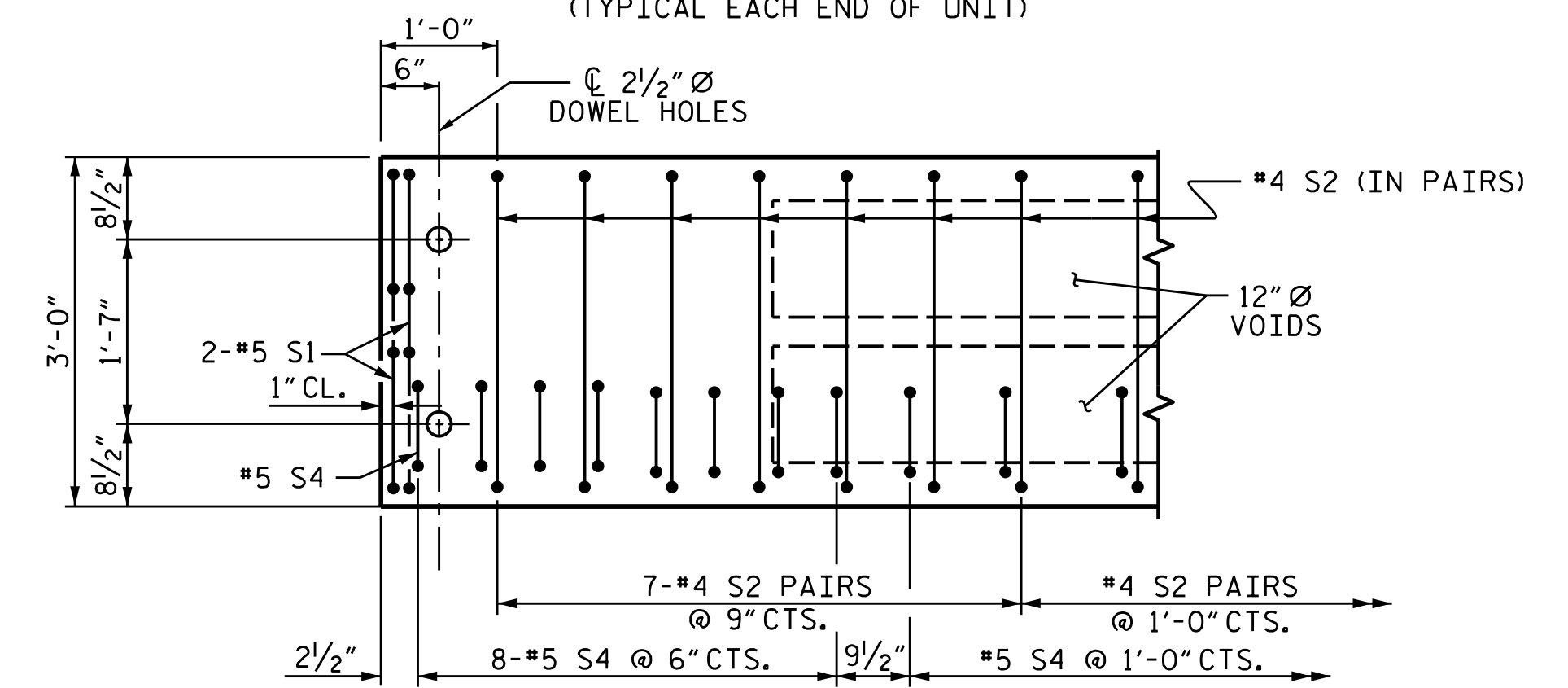


(TYPICAL EACH END OF UNIT) TYPE II UNIT SIMILAR EXCEPT OMIT #5 S3 BARS.



(TYPICAL EACH END OF UNIT)



(TYPICAL EACH END OF UNIT)

PLAN OF SPAN A

END POSTS & LAMP PEDESTALS NOT SHOWN FOR CLARITY.

#4 S2 BARS MAY BE SHIFTED AS NECESSARY TO MAINTAIN 1" CLEAR TO GROUDED RECESS AND 2 1/2" Ø TRANSVERSE POST-TENSIONING STRAND HOLES

FOR 1" Ø THREADED INSERTS IN 1'-4" x 2'-11 1/2" CONCRETE PARAPET, SEE "1'-4" x 2'-11 1/2" PARAPET" SHEET.

PROJECT NO. B-5125

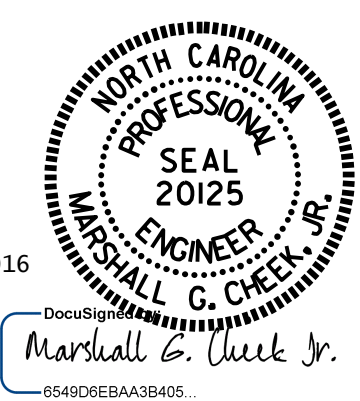
MACON COUNTY

STATION: 13+25.89 -L-

SHEET 4 OF 8

STATE OF NORTH CAROLINA
DEPARTMENT OF TRANSPORTATION
RALEIGH

PLAN OF 40' UNIT
90° SKEW
(SPAN A)



DRAWN BY :	W.J. HARRIS	DATE :	4/16
CHECKED BY :	M.G. CHEEK	DATE :	4/29/16
DESIGN ENGINEER OF RECORD:	W.J. HARRIS	DATE :	5/16

DOCUMENT NOT CONSIDERED FINAL UNLESS ALL SIGNATURES COMPLETED

REVISIONS						SHEET NO.
NO.	BY:	DATE:	NO.	BY:	DATE:	S-10
1			3			TOTAL SHEETS
2			4			43