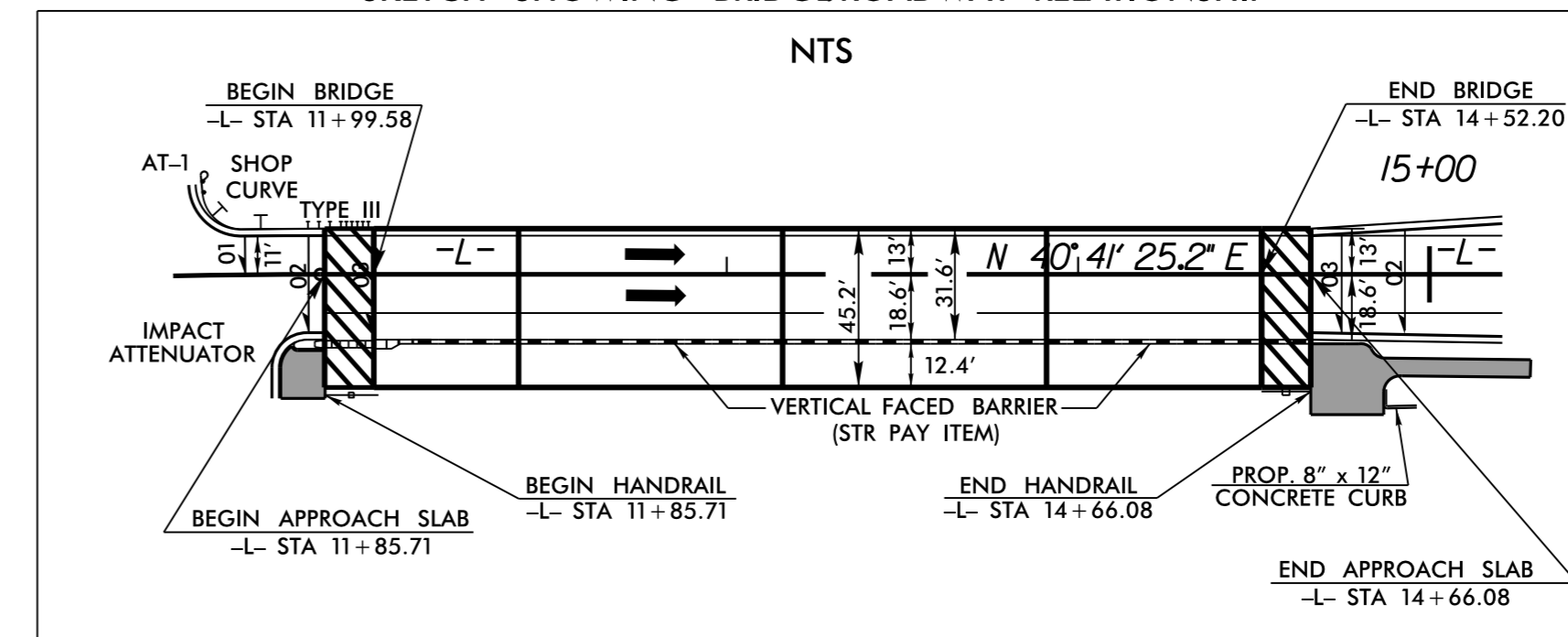


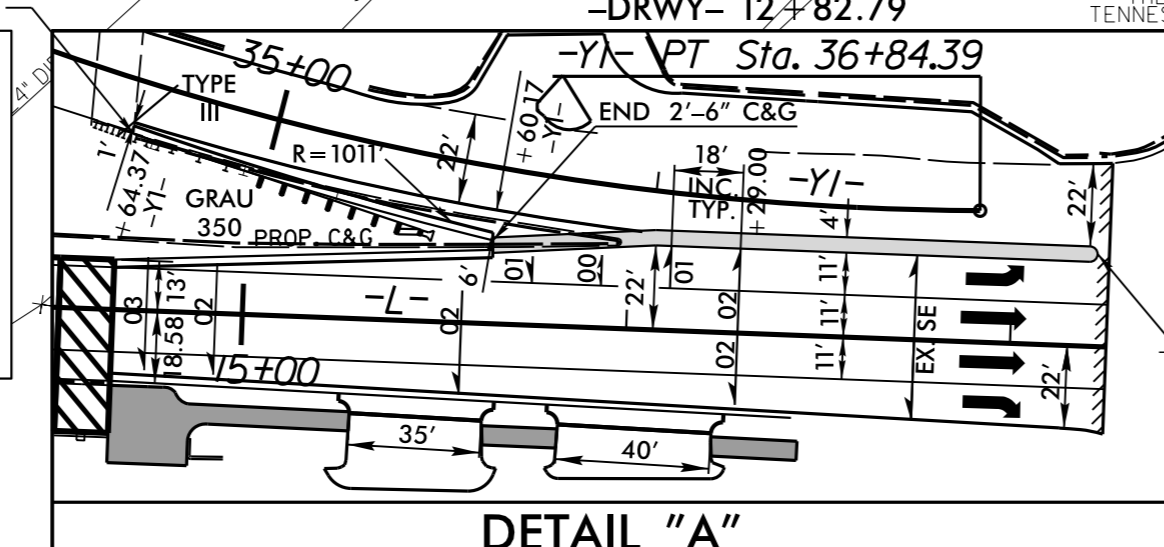
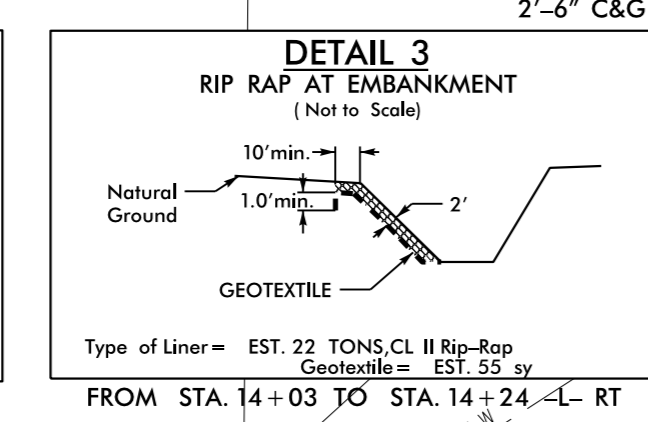
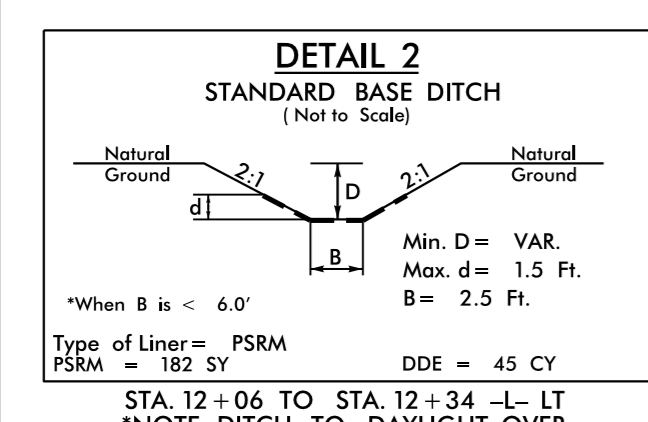
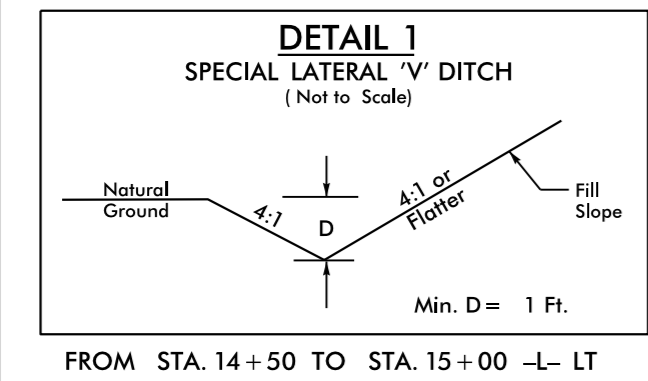
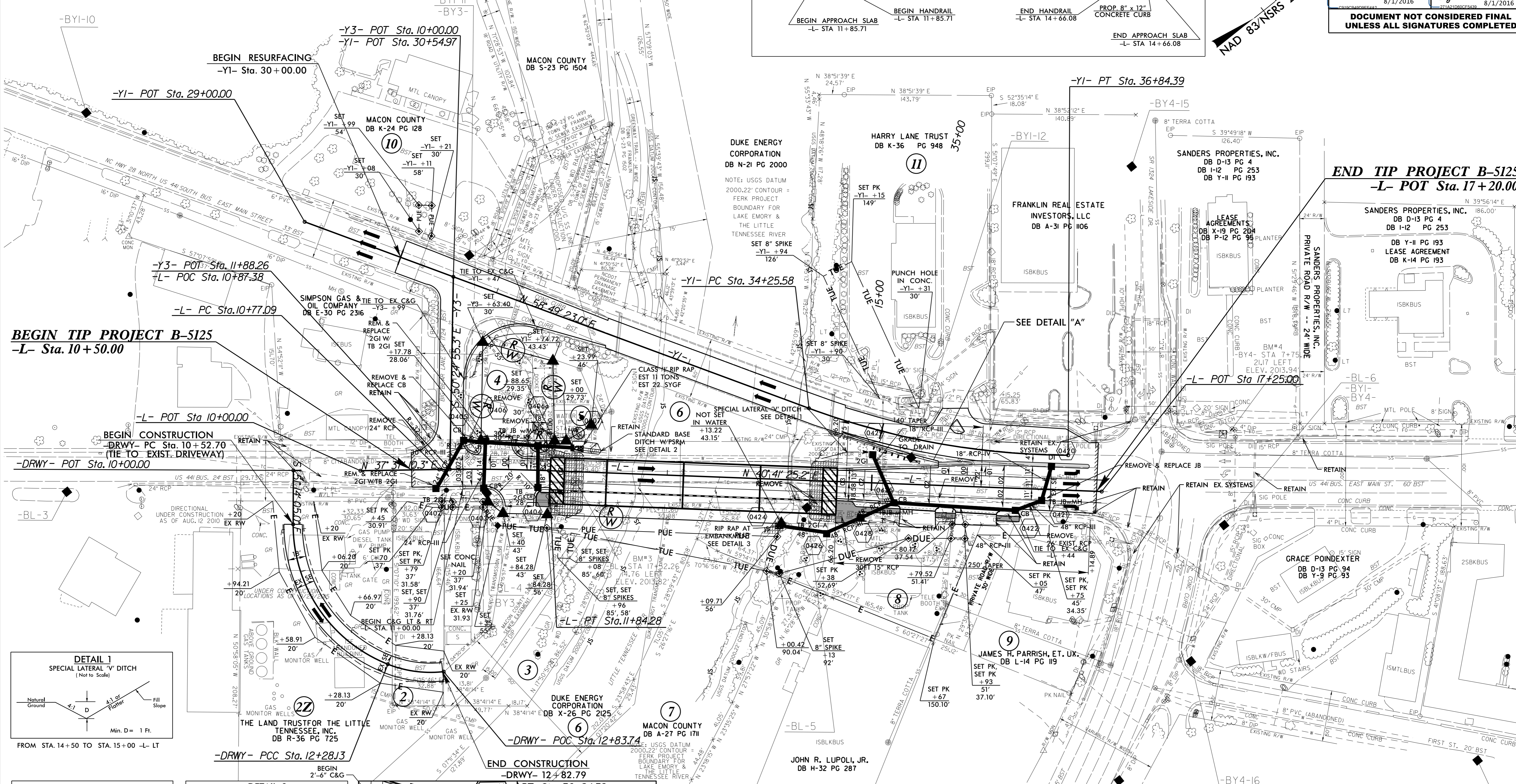
PROPERTY OWNERS

2 THE LAND TRUST FOR THE LITTLE TENNESSEE RIVER, INC. DB T-36 PG 259	4 ABDUL M. WALIANY, ET. UX. DB G-14 PG 163	8 JESSIE M. REVIS DB T-29 PG 2040
3 MACON COUNTY DB Y-26 PG 1219 PLAT CARD #3811	5 'NOW OR FORMERLY' TOWN OF FRANKLIN DB K-8 PG 306	

SKETCH SHOWING BRIDGEROADWAY RELATIONSHIP



PROJECT REFERENCE NO. B-5125	SHEET NO. 4
ROADWAY DESIGN ENGINEER Steven D. Kempf 8/17/2016	HYDRAULICS ENGINEER Elizabeth D. Dwyer 8/17/2016
DOCUMENT NOT CONSIDERED FINAL UNLESS ALL SIGNATURES COMPLETED	



-DRWY-	-L-	-YI-
PI Sta 11+52.68	PI Sta 12+56.50	PI Sta 11+30.70
Δ = 68° 39' 11.4" (LT)	Δ = 28° 00' 21.6" (LT)	Δ = 3° 04' 14.9" (RT)
D = 39' 08" 01.6"	D = 50' 22" 11.7"	D = 2' 51" 53.2"
L = 175.43'	L = 55.60'	L = 107.19'
T = 99.97'	T = 28.37'	T = 53.61'
R = 146.41'	R = 113.75'	R = 2,000.00'

■ DENOTES SIDEWALK

SEE SHEET 5 FOR -L- PROFILE
SEE SHEET 6 FOR -DRWY- PROFILE
SEE SHEET 2C-1 FOR BIKE/PEP HANDRAIL
SEE SHEETS S-1 THRU S-45 FOR STRUCTURE PLANS

8/17/199
01-AUG-2016 10:09 AM B5125_Ply_rpt.dgn