

REFERENCE: R-5769

PROJECT: N/A

STATE OF NORTH CAROLINA
 DEPARTMENT OF TRANSPORTATION
 DIVISION OF HIGHWAYS
 GEOTECHNICAL ENGINEERING UNIT

STRUCTURE
SUBSURFACE INVESTIGATION

COUNTY JOHNSTON
 PROJECT DESCRIPTION NOVO NORDISK ACCESS
ROAD FROM SR 1905 (GORDON ROAD) TO
PROPOSED NOVO NORDISK FACILITY
 SITE DESCRIPTION RETAINING WALLS 1 & 2 AT
BRIDGE ON -L- OVER NORFOLK SOUTHERN
RAILROAD (-RR1- & -RR2-)

CONTENTS

<u>SHEET NO.</u>	<u>DESCRIPTION</u>
1	TITLE SHEET
2	LEGEND
3	SITE PLAN
4	PROFILE
5	SUMMARY OF LABORATORY TESTING

STATE	STATE PROJECT REFERENCE NO.	SHEET NO.	TOTAL SHEETS
N.C.	R-5769	1	5

CAUTION NOTICE

THE SUBSURFACE INFORMATION AND THE SUBSURFACE INVESTIGATION ON WHICH IT IS BASED WERE MADE FOR THE PURPOSE OF STUDY, PLANNING AND DESIGN, AND NOT FOR CONSTRUCTION OR PAY PURPOSES. THE VARIOUS FIELD BORING LOGS, ROCK CORES AND SOIL TEST DATA AVAILABLE MAY BE REVIEWED OR INSPECTED IN RALEIGH BY CONTACTING THE N. C. DEPARTMENT OF TRANSPORTATION, GEOTECHNICAL ENGINEERING UNIT AT (919) 707-6850. THE SUBSURFACE PLANS AND REPORTS, FIELD BORING LOGS, ROCK CORES AND SOIL TEST DATA ARE NOT PART OF THE CONTRACT.

GENERAL SOIL AND ROCK STRATA DESCRIPTIONS AND INDICATED BOUNDARIES ARE BASED ON A GEOTECHNICAL INTERPRETATION OF ALL AVAILABLE SUBSURFACE DATA AND MAY NOT NECESSARILY REFLECT THE ACTUAL SUBSURFACE CONDITIONS BETWEEN BORINGS OR BETWEEN SAMPLED STRATA WITHIN THE BOREHOLE. THE LABORATORY SAMPLE DATA AND THE IN SITU (IN-PLACE) TEST DATA CAN BE RELIED ON ONLY TO THE DEGREE OF RELIABILITY INHERENT IN THE STANDARD TEST METHOD. THE OBSERVED WATER LEVELS OR SOIL MOISTURE CONDITIONS INDICATED IN THE SUBSURFACE INVESTIGATIONS ARE AS RECORDED AT THE TIME OF THE INVESTIGATION. THESE WATER LEVELS OR SOIL MOISTURE CONDITIONS MAY VARY CONSIDERABLY WITH TIME ACCORDING TO CLIMATIC CONDITIONS INCLUDING TEMPERATURES, PRECIPITATION AND WIND, AS WELL AS OTHER NON-CLIMATIC FACTORS.

THE BIDDER OR CONTRACTOR IS CAUTIONED THAT DETAILS SHOWN ON THE SUBSURFACE PLANS ARE PRELIMINARY ONLY AND IN MANY CASES THE FINAL DESIGN DETAILS ARE DIFFERENT. FOR BIDDING AND CONSTRUCTION PURPOSES, REFER TO THE CONSTRUCTION PLANS AND DOCUMENTS FOR FINAL DESIGN INFORMATION ON THIS PROJECT. THE DEPARTMENT DOES NOT WARRANT OR GUARANTEE THE SUFFICIENCY OR ACCURACY OF THE INVESTIGATION MADE, NOR THE INTERPRETATIONS MADE, OR OPINION OF THE DEPARTMENT AS TO THE TYPE OF MATERIALS AND CONDITIONS TO BE ENCOUNTERED. THE BIDDER OR CONTRACTOR IS CAUTIONED TO MAKE SUCH INDEPENDENT SUBSURFACE INVESTIGATIONS AS HE DEEMS NECESSARY TO SATISFY HIMSELF AS TO CONDITIONS TO BE ENCOUNTERED ON THE PROJECT. THE CONTRACTOR SHALL HAVE NO CLAIM FOR ADDITIONAL COMPENSATION OR FOR AN EXTENSION OF TIME FOR ANY REASON RESULTING FROM THE ACTUAL CONDITIONS ENCOUNTERED AT THE SITE DIFFERING FROM THOSE INDICATED IN THE SUBSURFACE INFORMATION.

- NOTES:
1. THE INFORMATION CONTAINED HEREIN IS NOT IMPLIED OR GUARANTEED BY THE N. C. DEPARTMENT OF TRANSPORTATION AS ACCURATE NOR IS IT CONSIDERED PART OF THE PLANS, SPECIFICATIONS OR CONTRACT FOR THE PROJECT.
 2. BY HAVING REQUESTED THIS INFORMATION, THE CONTRACTOR SPECIFICALLY WAIVES ANY CLAIMS FOR INCREASED COMPENSATION OR EXTENSION OF TIME BASED ON DIFFERENCES BETWEEN THE CONDITIONS INDICATED HEREIN AND THE ACTUAL CONDITIONS AT THE PROJECT SITE.

PERSONNEL

ALEXANDER, M. J.

EKLUND, M. A.

LEE, S.

INVESTIGATED BY TERRACON CONSULTANTS

DRAWN BY FIELDS, W. D.

CHECKED BY ALEXANDER, M. J.

SUBMITTED BY TERRACON CONSULTANTS

DATE JUNE 2016



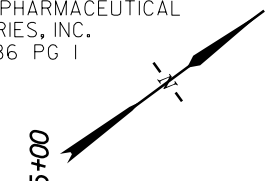
SIGNATURE _____ DATE _____

**DOCUMENT NOT CONSIDERED FINAL
 UNLESS ALL SIGNATURES COMPLETED**

PROJECT REFERENCE NO. R-5769	SHEET NO. 3
SITE PLAN	
 0 40 80 FEET	

BRIDGE SKEW = 90°

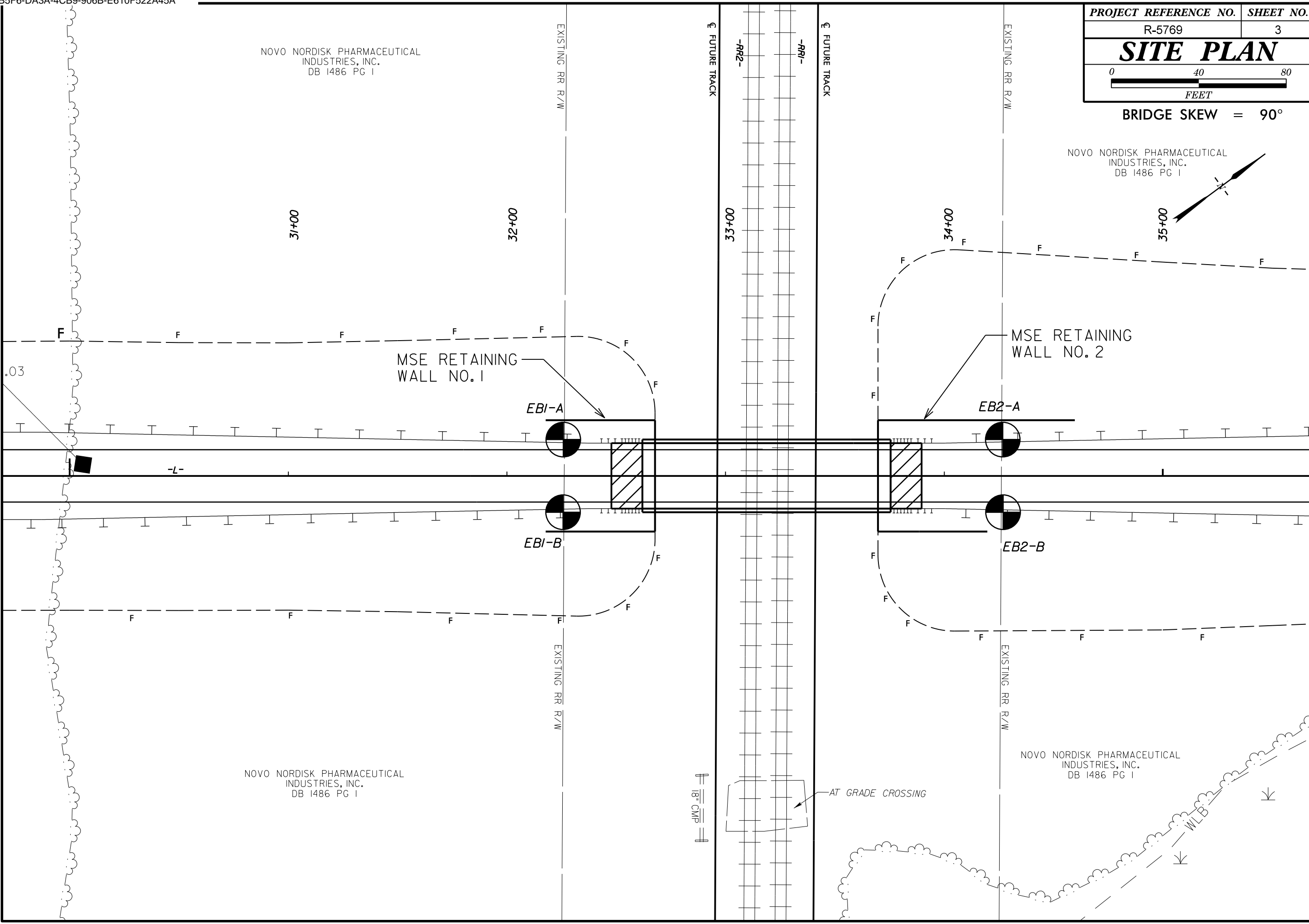
NOVO NORDISK PHARMACEUTICAL
INDUSTRIES, INC.
DB 1486 PG 1

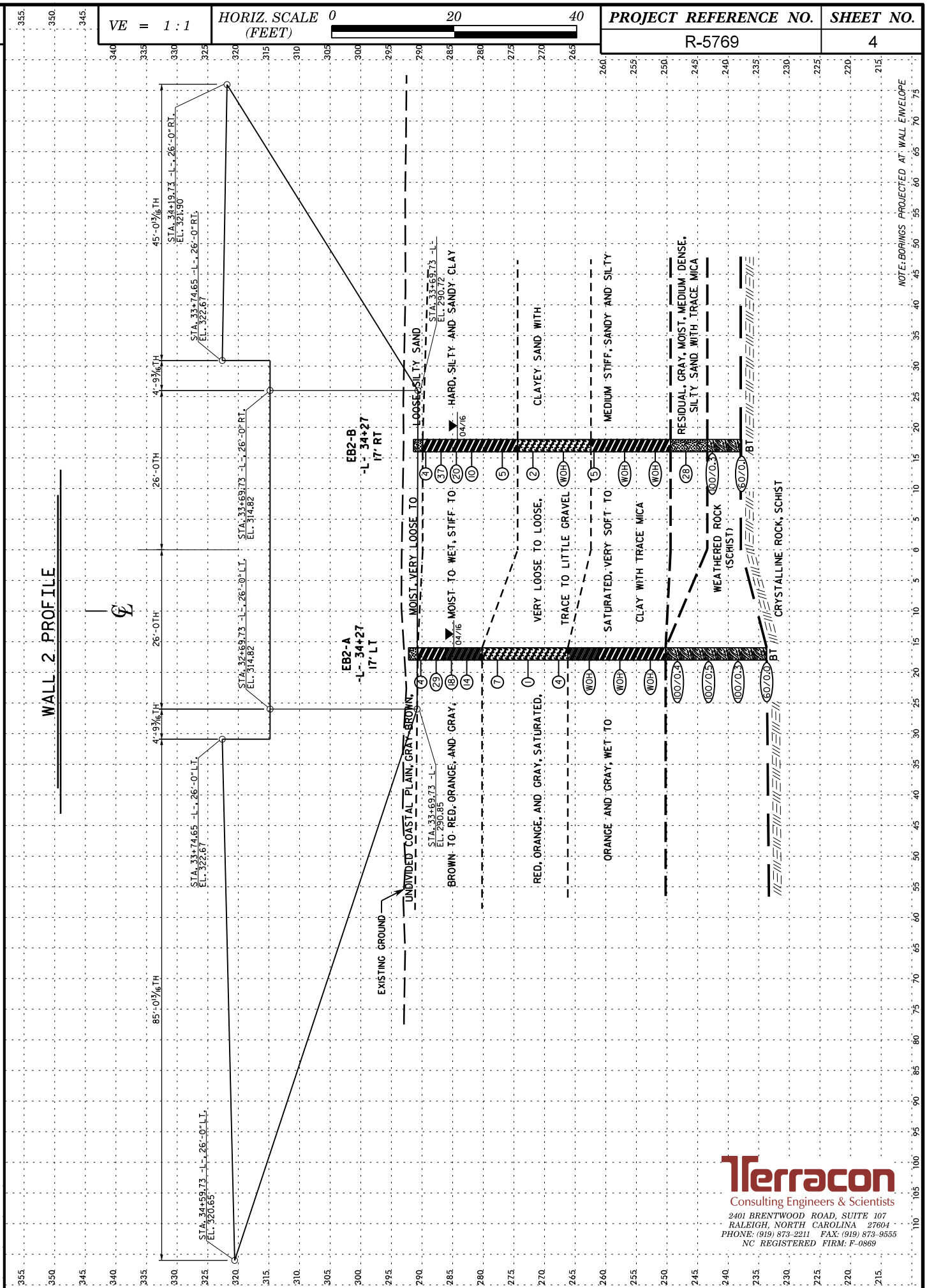
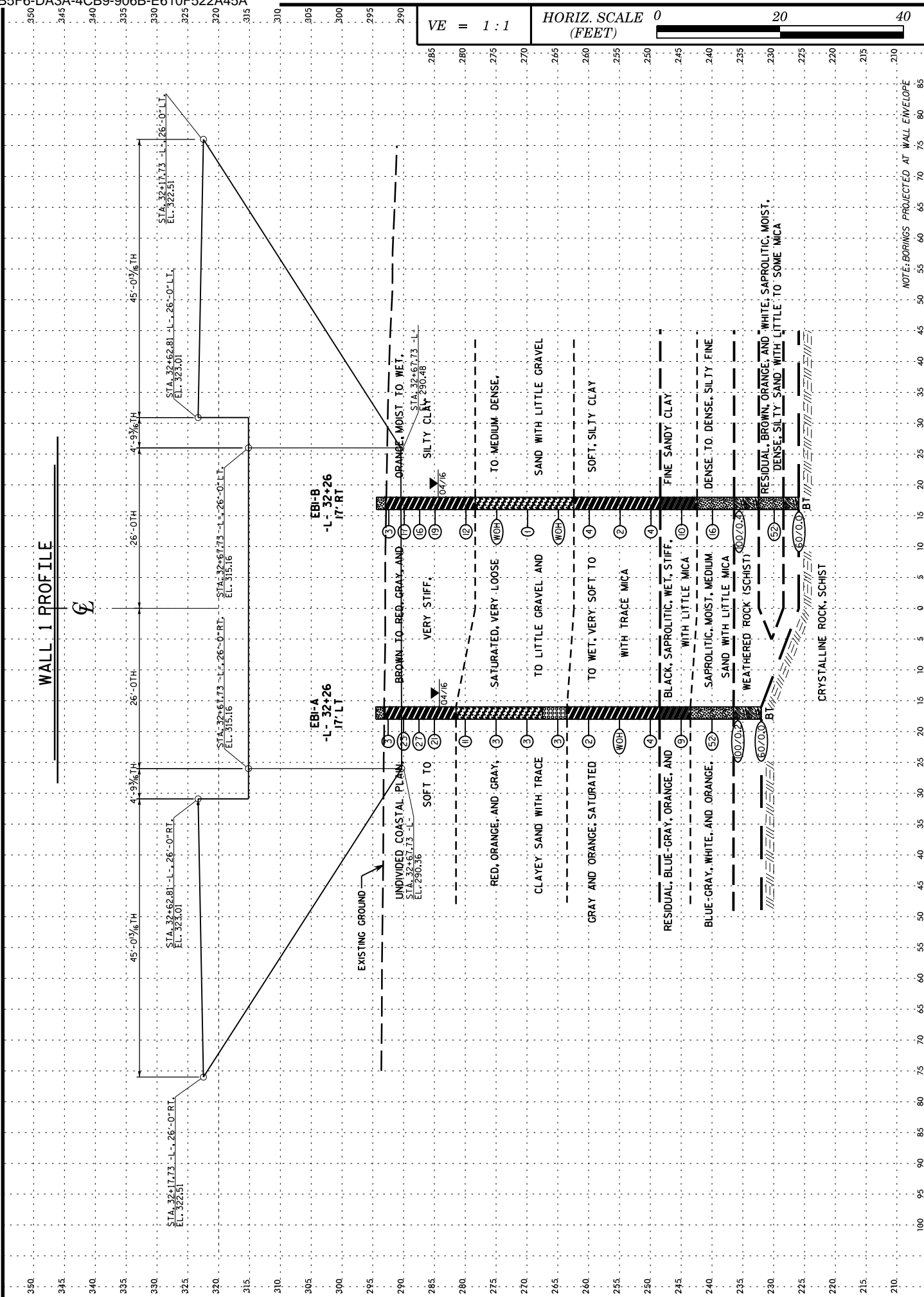


NOVO NORDISK PHARMACEUTICAL
INDUSTRIES, INC.
DB 1486 PG 1

NOVO NORDISK PHARMACEUTICAL
INDUSTRIES, INC.
DB 1486 PG 1

NOVO NORDISK PHARMACEUTICAL
INDUSTRIES, INC.
DB 1486 PG 1





PROJECT REFERENCE NO.	R-5769
SHEET NO.	4

SOIL LABORATORY TESTING SUMMARY

PROJECT NUMBER: N/A

ID (TIP): R-5769

COUNTY: JOHNSTON

DESCRIPTION: NOVO NORDISK ACCESS ROAD FROM SR 1905 (GORDON ROAD) TO PROPOSED NOVO NORDISK FACILITY

Boring No.	Sample No.	Alignment	Station	Offset (feet)	Depth Interval (feet)	AASHTO Class.	L.L.	P.I.	% by Weight				% Retained #4 Sieve	% Passing (sieves)			% Moisture	% Organic	
									Coarse Sand	Fine Sand	Silt	Clay		#10	#40	#200			
EB1-A	SS-9	-L-	32+26	17 LT	38.5 - 40.0	A-7-6 (12)	44	18	0.6	47.5	17.6	34.3	0	100	100	68	44.5	-	
EB1-B	SS-10	-L-	32+26	17 RT	8.5 - 10.0	A-7-6 (13)	56	38	29.6	24.7	5.0	40.7	0	100	82	49	22.4	-	
EB1-B	SS-11	-L-	32+26	17 RT	18.5 - 20.0	A-2-7 (2)	62	45	64.9	8.6	0.3	26.2	1	97	52	27	28.4	-	
EB2-A	SS-12	-L-	34+27	17 LT	33.5 - 35.0	A-7-6 (7)	43	21	0.8	61.3	9.8	28.1	0	100	100	49	46.1	-	
EB2-B	SS-13	-L-	34+27	17 RT	6.0 - 7.5	A-7-6 (12)	79	54	54.8	5.9	0.5	38.8	1	96	50	39	20.5	-	
EB2-B	SS-14	-L-	34+27	17 RT	23.5 - 25.0	A-2-7 (1)	51	38	63.8	8.6	2.0	25.6	2	93	43	27	29.8	-	
EB2-A	ST-1	-L-	34+27	17 LT	33.5 - 36.0	A-7-6 (7)	42	17	0.2	57.2	16.4	26.2	0	100	100	55	-	-	

ST-1 TESTED BY GEOTECHNICS



Stephanie H. Huffman
 Certified Lab Technician Signature

114-01-1203
 Certification Number