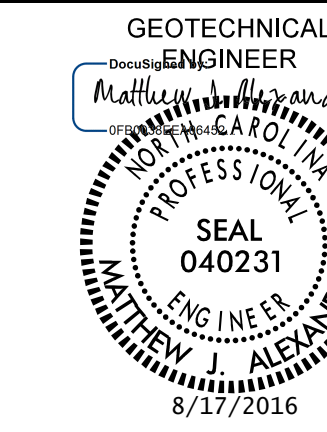
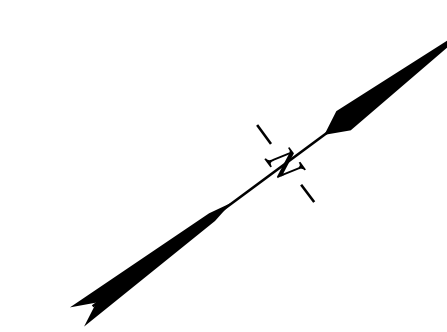
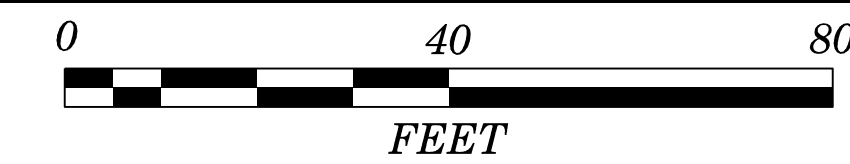
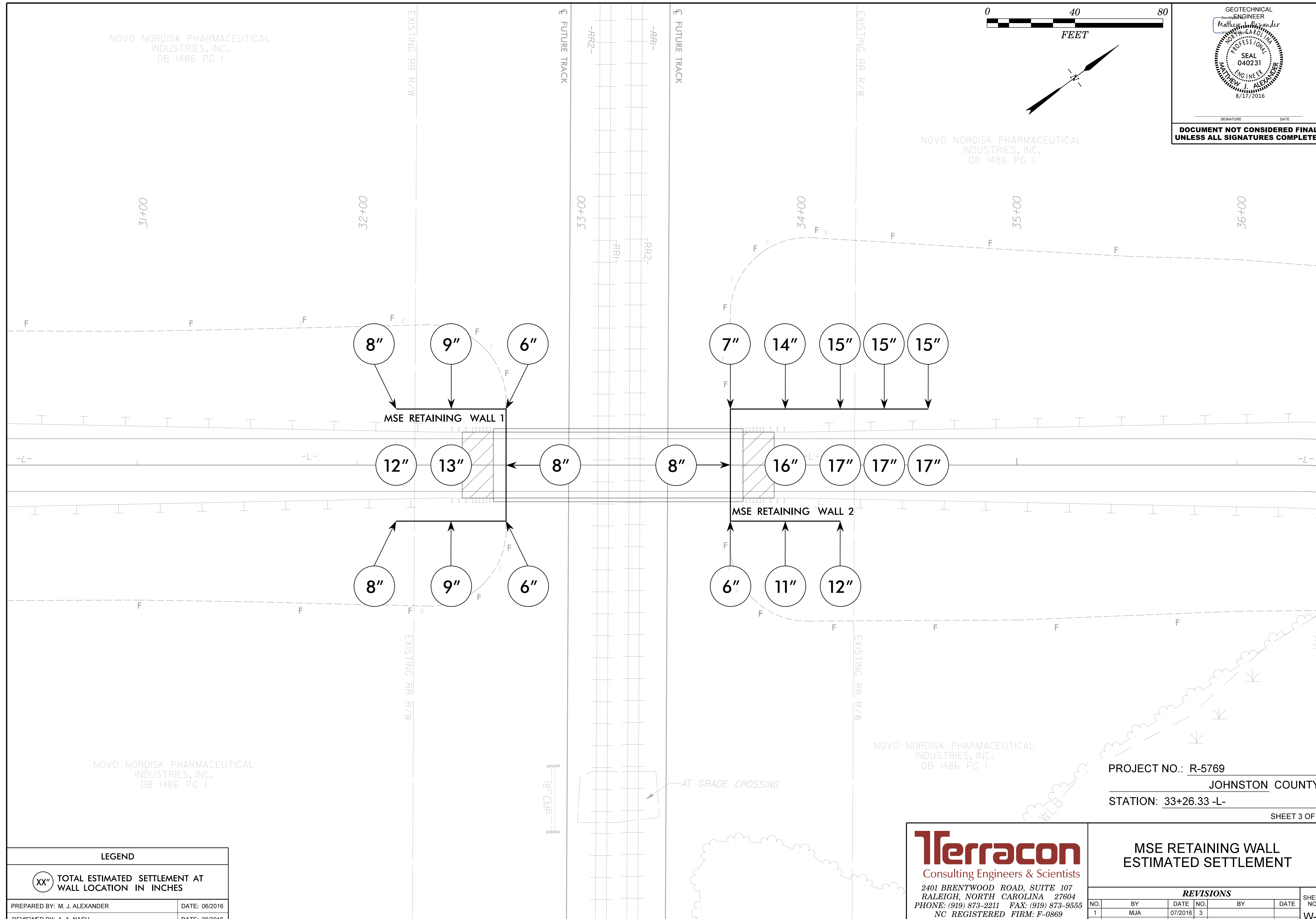


NOVO NORDISK PHARMACEUTICAL
INDUSTRIES, INC.
DB 1486 PG 1



DOCUMENT NOT CONSIDERED FINAL
UNLESS ALL SIGNATURES COMPLETED

NOVO NORDISK PHARMACEUTICAL
INDUSTRIES, INC.
DB 1486 PG 1



NOVO NORDISK PHARMACEUTICAL
INDUSTRIES, INC.
DB 1486 PG 1

NOVO NORDISK PHARMACEUTICAL
INDUSTRIES, INC.
DB 1486 PG 1

PROJECT NO.: R-5769
JOHNSTON COUNTY
STATION: 33+26.33 -L-

SHEET 3 OF 6

LEGEND	
(XX")	TOTAL ESTIMATED SETTLEMENT AT WALL LOCATION IN INCHES
PREPARED BY: M. J. ALEXANDER	DATE: 06/2016
REVIEWED BY: A. A. NASH	DATE: 06/2016

Terracon
Consulting Engineers & Scientists
2401 BRENTWOOD ROAD, SUITE 107
RALEIGH, NORTH CAROLINA 27604
PHONE: (919) 873-2211 FAX: (919) 873-9555
NC REGISTERED FIRM: F-0869

MSE RETAINING WALL
ESTIMATED SETTLEMENT

REVISIONS						SHEET NO.
NO.	BY	DATE	NO.	BY	DATE	
1	MJA	07/2016	3			W-3
2			4			