
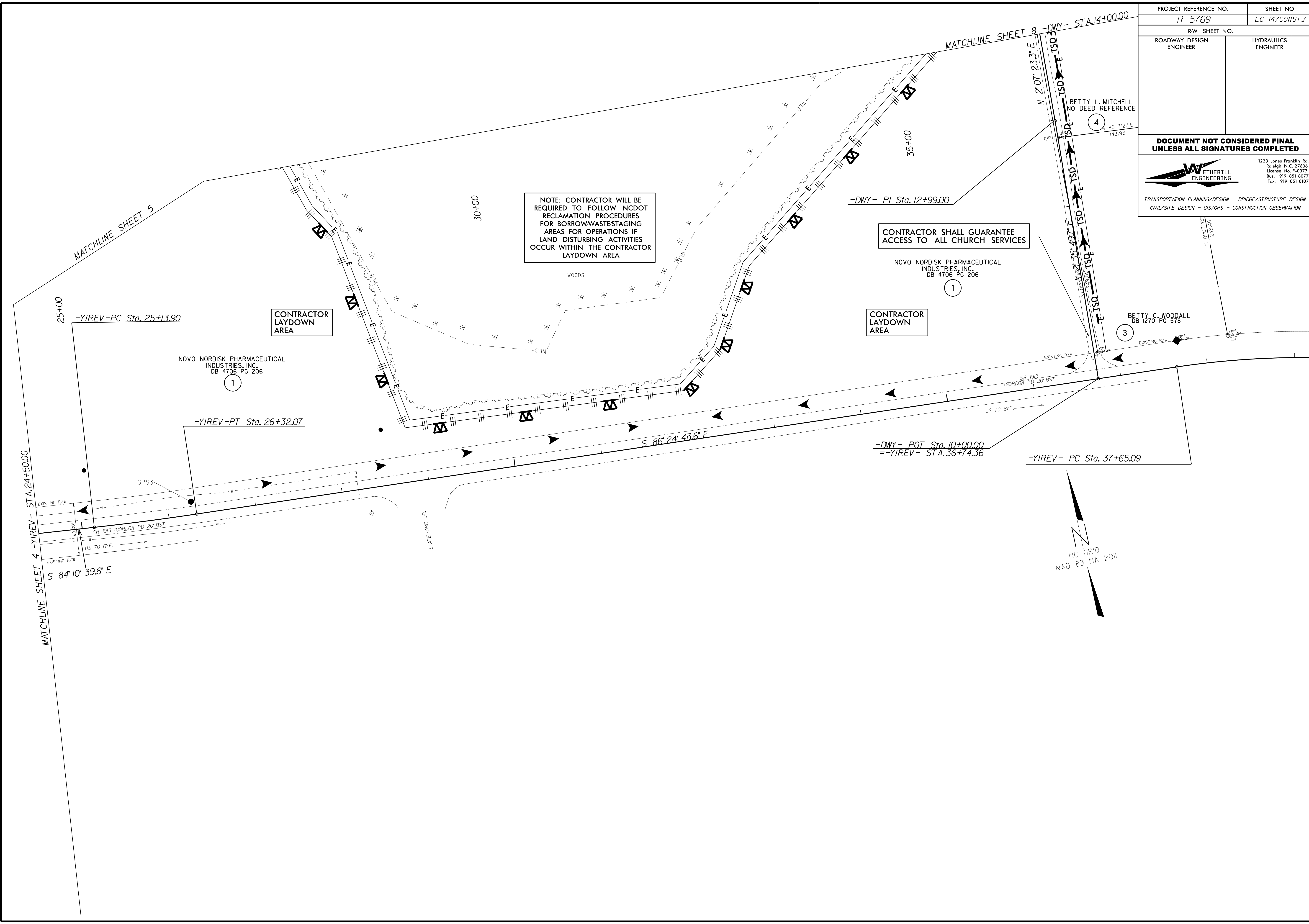


8/17/99

REVISIONS

PROJECT REFERENCE NO. R-5769	SHEET NO. EC-14/CONST.7
RW SHEET NO.	
ROADWAY DESIGN ENGINEER	HYDRAULICS ENGINEER
<b>DOCUMENT NOT CONSIDERED FINAL UNLESS ALL SIGNATURES COMPLETED</b>	
	
<small>1223 Jones Franklin Rd. Raleigh, N.C. 27606 License No. E-49377 Bus: 919 851 8077 Fax: 919 851 8107</small>	
<small>TRANSPORTATION PLANNING/DESIGN - BRIDGE/STRUCTURE DESIGN CIVIL/SITE DESIGN - GIS/GPS - CONSTRUCTION OBSERVATION</small>	



NOTE: CONTRACTOR WILL BE REQUIRED TO FOLLOW NCDOT RECLAMATION PROCEDURES FOR BORROWWASTESTAGING AREAS FOR OPERATIONS IF LAND DISTURBING ACTIVITIES OCCUR WITHIN THE CONTRACTOR LAYDOWN AREA

CONTRACTOR SHALL GUARANTEE ACCESS TO ALL CHURCH SERVICES

CONTRACTOR LAYDOWN AREA

CONTRACTOR LAYDOWN AREA

NOVO NORDISK PHARMACEUTICAL INDUSTRIES, INC.  
DB 4706 PG 206

NOVO NORDISK PHARMACEUTICAL INDUSTRIES, INC.  
DB 4706 PG 206

BETTY L. MITCHELL  
NO DEED REFERENCE

NC GRID  
NAD 83 NA 2011

MATCHLINE SHEET 4 -YIREV- STA.24+50.00

MATCHLINE SHEET 5

MATCHLINE SHEET 8 -DWHY- STA.14+00.00

S 84° 10' 39.6" E

S 86° 24' 43.6" E

-YIREV-PC Sta. 25+13.90

-YIREV-PT Sta. 26+32.07

-DWHY- PI Sta. 12+99.00

-DWHY- POT Sta. 10+00.00  
=-YIREV- STA. 36+74.36

-YIREV- PC Sta. 37+65.09

GPS3

EXISTING R/W

EXISTING R/W

SR 1913 (GORDON RD) 20' BST

US 70 BYP.

SLATEFORD DR.

EXISTING R/W

EXISTING R/W

US 70 BYP.

GPS3

EXISTING R/W

EXISTING R/W

SR 1913 (GORDON RD) 20' BST

US 70 BYP.

GPS3

EXISTING R/W

EXISTING R/W

SR 1913 (GORDON RD) 20' BST

US 70 BYP.

GPS3

EXISTING R/W

EXISTING R/W

SR 1913 (GORDON RD) 20' BST

US 70 BYP.

GPS3

EXISTING R/W

EXISTING R/W

SR 1913 (GORDON RD) 20' BST

US 70 BYP.