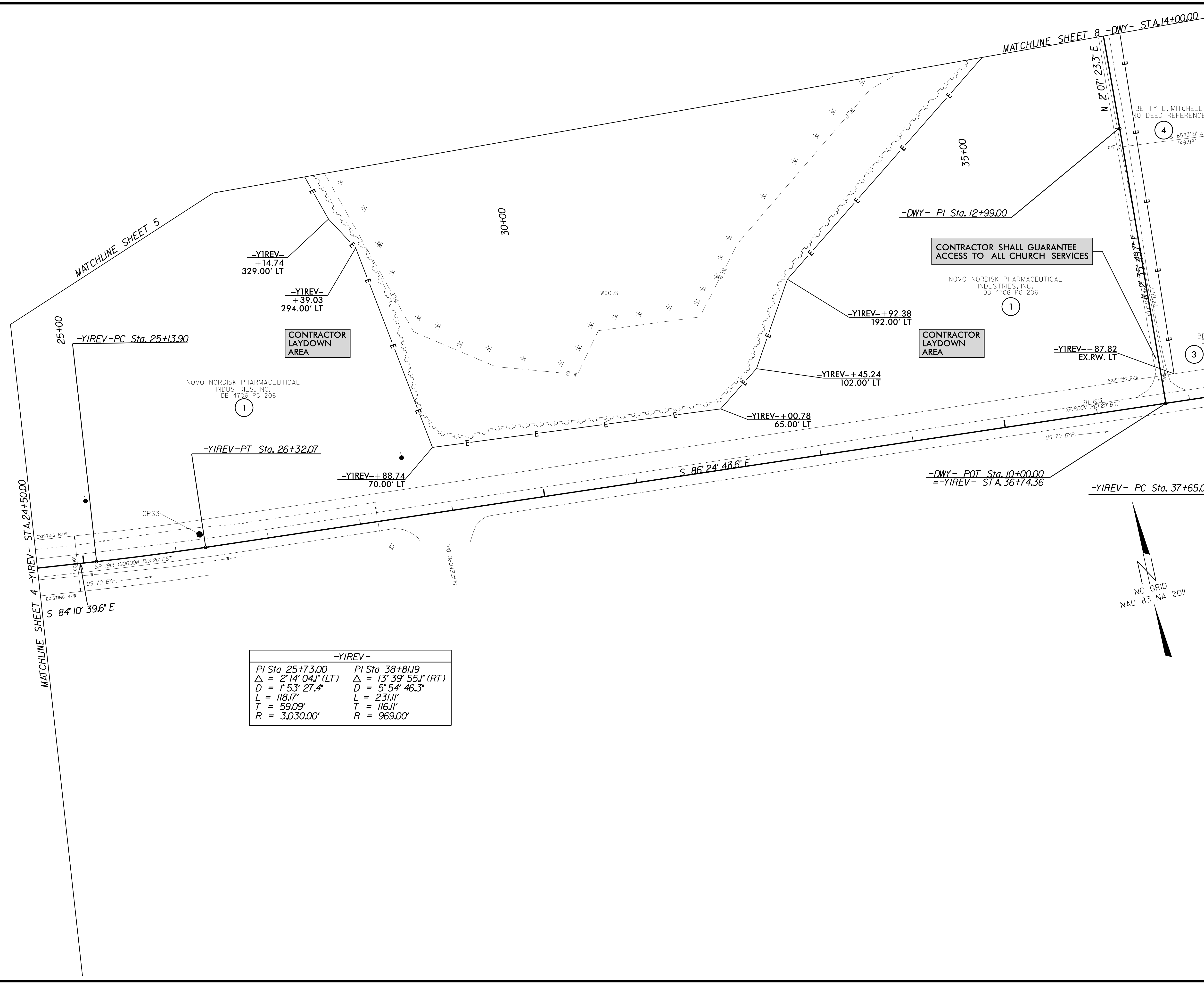


8/17/99

REVISIONS

8/23/2016 16:57:69.RDY_psh7.dgn
 I:\PROJECTS



-YIREV-	
PI Sta 25+73.00	PI Sta 38+81.19
$\Delta = 2' 14' 04.1''$ (LT)	$\Delta = 13' 39' 55.1''$ (RT)
$D = 1' 53' 27.4''$	$D = 5' 54' 46.3''$
$L = 118.17'$	$L = 231.11'$
$T = 59.09'$	$T = 116.11'$
$R = 3,030.00'$	$R = 969.00'$

PROJECT REFERENCE NO. R-5769	SHEET NO. 7
RW SHEET NO.	
ROADWAY DESIGN ENGINEER GREGORY S. PURNIS PROFESSIONAL ENGINEER SEAL 22999 8/24/2016	HYDRAULICS ENGINEER BETTY L. MITCHELL PROFESSIONAL ENGINEER SEAL 31977 8/24/2016
DOCUMENT NOT CONSIDERED FINAL UNLESS ALL SIGNATURES COMPLETED	
 WETHERILL ENGINEERING 1223 Jones Franklin Rd. Raleigh, N.C. 27606 License No. F-0377 Bus: 919 851 8077 Fax: 919 851 8107	
TRANSPORTATION PLANNING/DESIGN - BRIDGE/STRUCTURE DESIGN CIVIL/SITE DESIGN - GIS/GPS - CONSTRUCTION OBSERVATION	