

ROADWAY DESIGN ENGINEER GARY S. PUNIS PROFESSIONAL SEAL 22999 8/24/2016 ENGINEER GEOFFREY S. PINKNEY	HYDRAULICS ENGINEER JAMES B. CLAY PROFESSIONAL SEAL 31977 8/24/2016 ENGINEER KEVIN B. ALFORD
--	--

DOCUMENT NOT CONSIDERED FINAL UNLESS ALL SIGNATURES COMPLETED

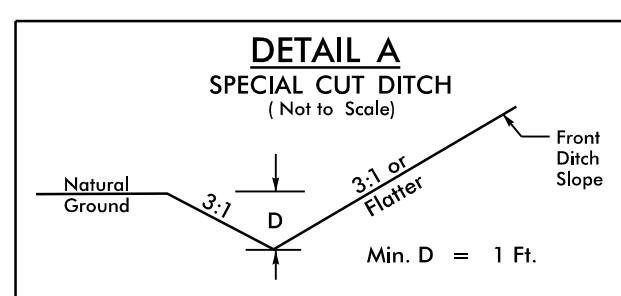
TRANSPORTATION PLANNING/DESIGN - BRIDGE/STRUCTURE DESIGN
CIVIL/SITE DESIGN - GIS/GPS - CONSTRUCTION OBSERVATION

1223 Jones Franklin Rd.
Raleigh, N.C. 27606
License No. F-0377
Bus: 919 851 8077
Fax: 919 851 8107

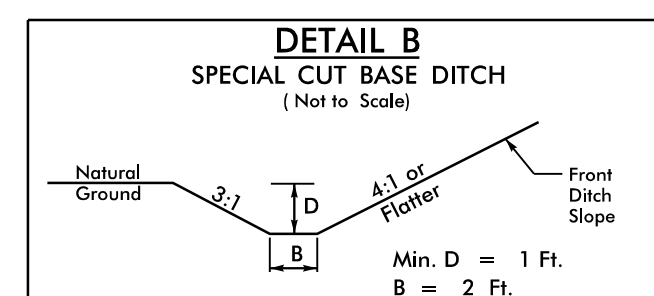
SEE SHEET 9 FOR -YIREV- PROFILE
SEE SHEET 9 FOR -L- PROFILE

-YIREV-			-L-
PI Sta 10+55.20 Δ = 5° 28' 44.6" (LT) D = 4° 58' 01.2" L = 110.31' T = 55.20' R = 1,153.53' SE = SEE PLANS	PI Sta 16+48.69 Δ = 29° 58' 45.7" (RT) D = 6° 04' 15.1" L = 493.82' T = 252.70' R = 943.78' DS = 50MPH*	PI Sta 21+06.75 Δ = 2° 38' 28.8" (LT) D = 0° 36' 32.0" L = 433.80' T = 216.94' R = 9,410.00' SE = SEE PLANS	PI Sta 13+99.02 Δ = 58° 11' 22.1" (RT) D = 1° 27' 33.0" L = 507.80' T = 278.24' R = 500.00' SE = .06 DS = 40MPH

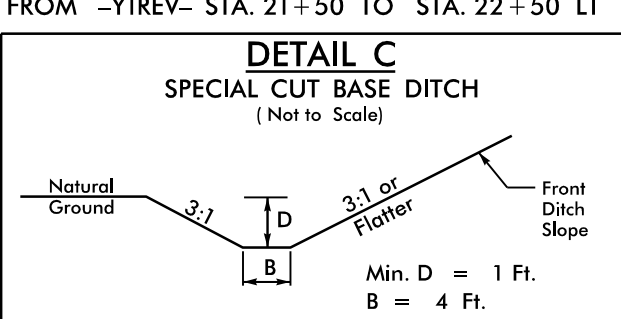
*- MEETS SUBREGIONAL TIER GUIDELINES



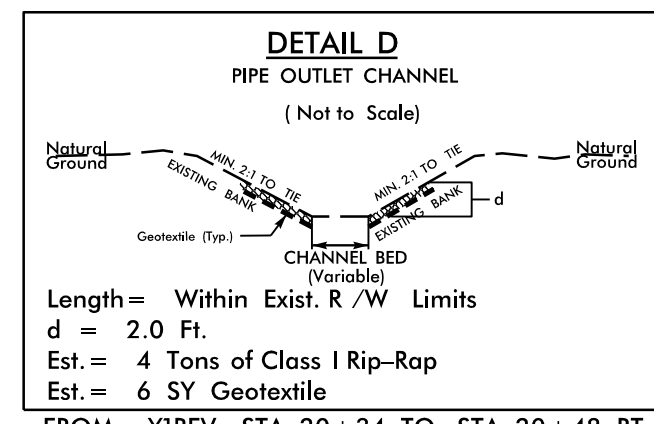
FROM -L- STA. 10+33 TO STA. 12+00 LT
FROM -L- STA. 10+49 TO STA. 12+00 RT
FROM -L- STA. 14+25 TO STA. 16+14 LT
FROM -YIREV- STA. 11+75 TO STA. 14+00 LT
FROM -YIREV- STA. 21+50 TO STA. 22+50 LT



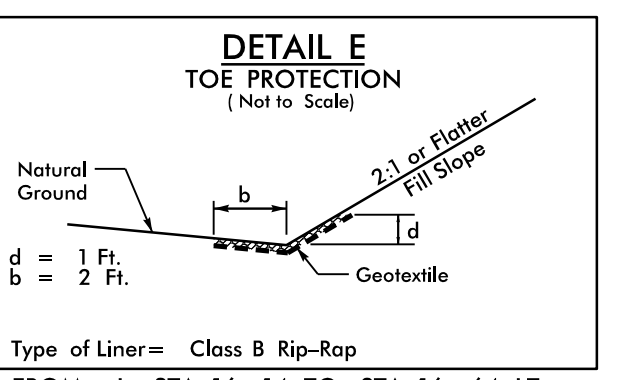
FROM -YIREV- STA. 14+00 TO STA. 18+00 LT



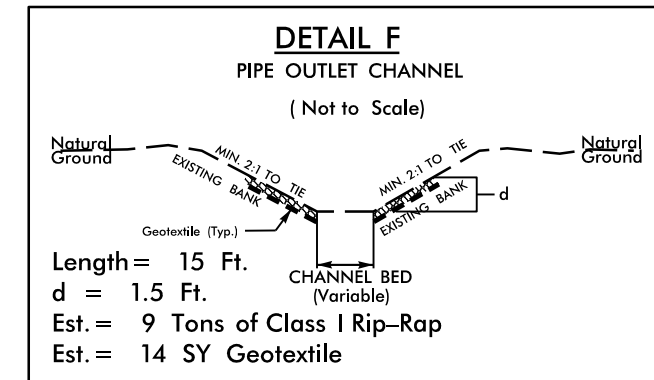
FROM -YIREV- STA. 19+00 TO STA. 19+92 LT



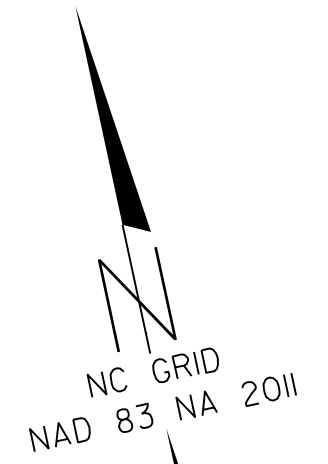
FROM -YIREV- STA. 20+34 TO STA. 20+48 RT.



FROM -L- STA. 16+14 TO STA. 16+64 LT
Estimate 13 Tons Class B Rip-Rap
Estimate 45 SY Geotextile
FROM -L- STA. 16+21 TO STA. 19+21 RT
Estimate 78 Tons Class B Rip-Rap
Estimate 267 SY Geotextile

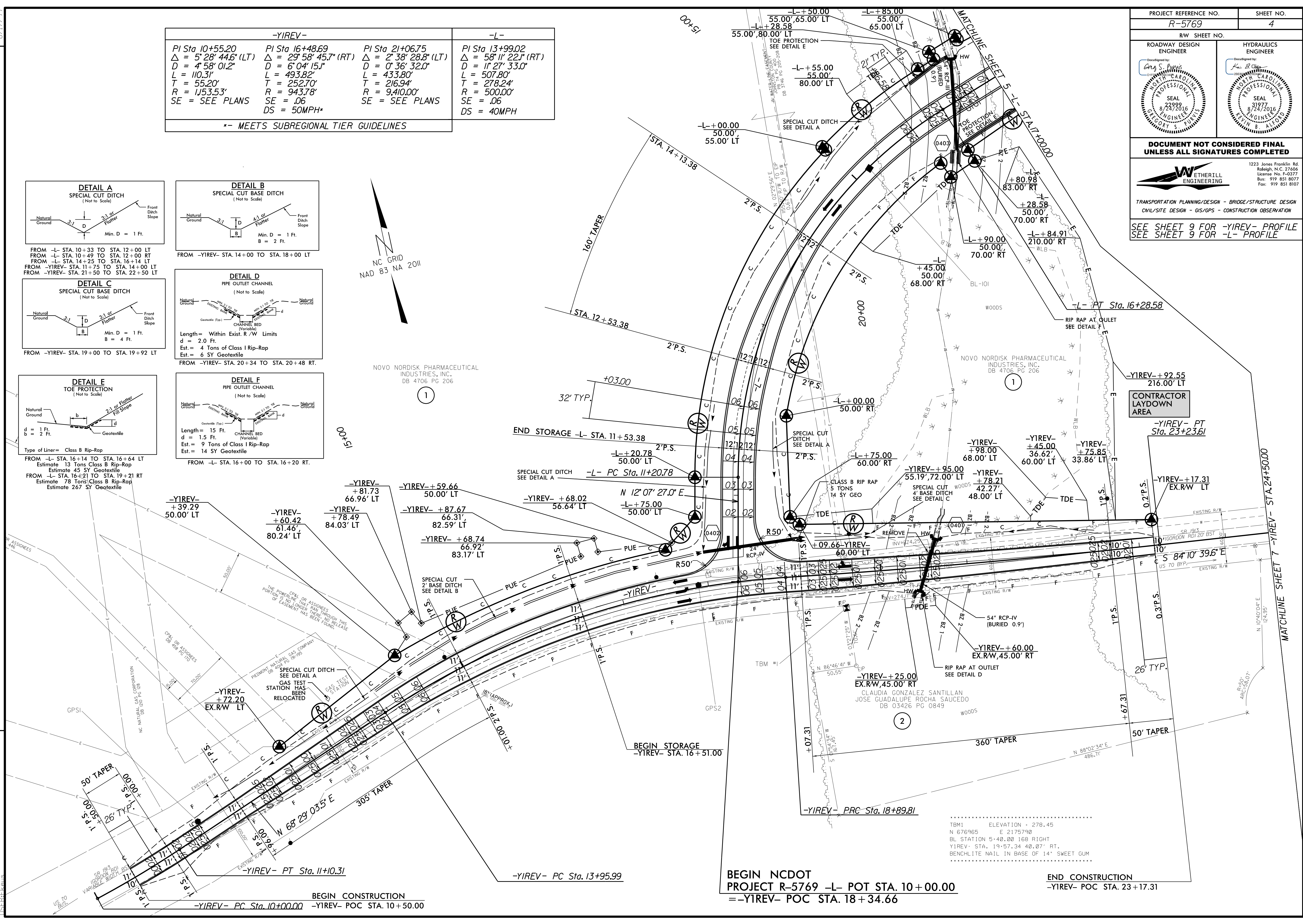


FROM -L- STA. 16+00 TO STA. 16+20 RT.



NOVO NORDISK PHARMACEUTICAL INDUSTRIES, INC. DB 4706 PG 206

CONTRACTOR LAYDOWN AREA



BEGIN NCDOT PROJECT R-5769 -L- POT STA. 10+00.00
=-YIREV- POC STA. 18+34.66

END CONSTRUCTION
-YIREV- POC STA. 23+17.31

TBM1 ELEVATION = 278.45
N 67° 56' 55" E 2175.790
BL STATION 5+40.00 168 RIGHT
YIREV- STA. 19+57.34 40.07' RT.
BENCHLITE NAIL IN BASE OF 14" SWEET GUM

REVISIONS

8/17/99

8/23/2016 R-5769-RDY_psh4.dgn