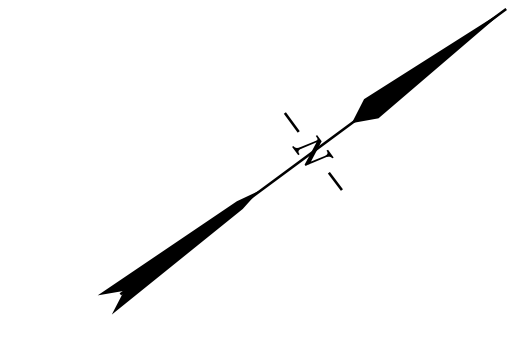
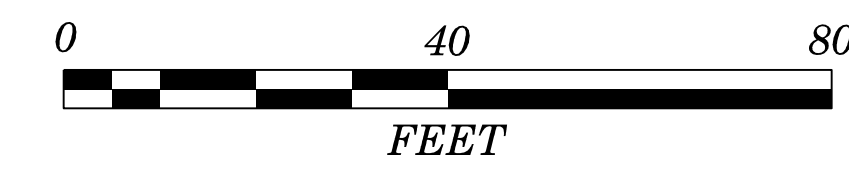
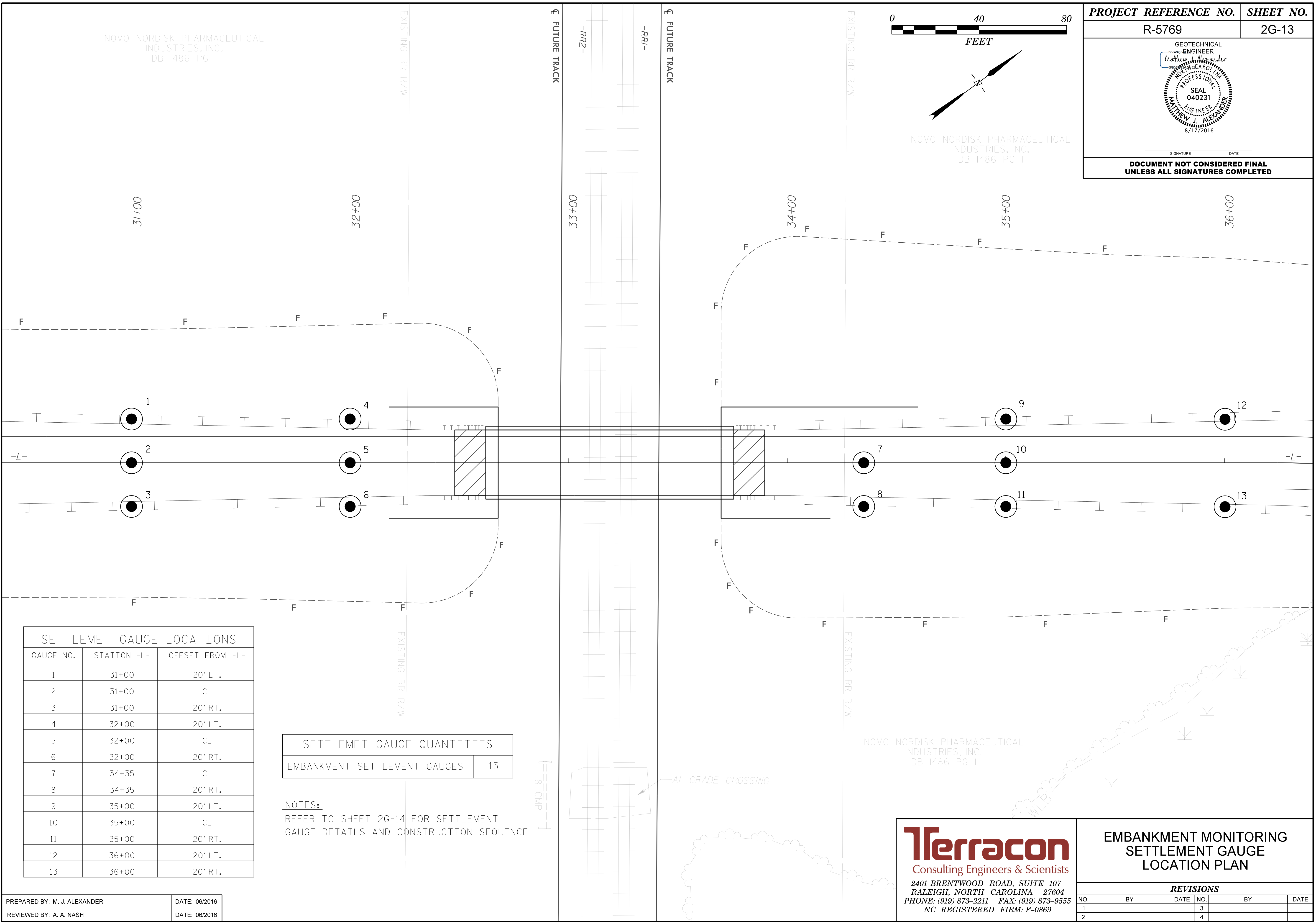


NOVO NORDISK PHARMACEUTICAL  
INDUSTRIES, INC.  
DB 1486 PG 1



NOVO NORDISK PHARMACEUTICAL  
INDUSTRIES, INC.  
DB 1486 PG 1

<b>PROJECT REFERENCE NO.</b> R-5769	<b>SHEET NO.</b> 2G-13
SIGNATURE _____ DATE _____ <b>DOCUMENT NOT CONSIDERED FINAL UNLESS ALL SIGNATURES COMPLETED</b>	



SETTLEMENT GAUGE LOCATIONS		
GAUGE NO.	STATION -L-	OFFSET FROM -L-
1	31+00	20' LT.
2	31+00	CL
3	31+00	20' RT.
4	32+00	20' LT.
5	32+00	CL
6	32+00	20' RT.
7	34+35	CL
8	34+35	20' RT.
9	35+00	20' LT.
10	35+00	CL
11	35+00	20' RT.
12	36+00	20' LT.
13	36+00	20' RT.

SETTLEMENT GAUGE QUANTITIES	
EMBANKMENT SETTLEMENT GAUGES	13

**NOTES:**  
REFER TO SHEET 2G-14 FOR SETTLEMENT  
GAUGE DETAILS AND CONSTRUCTION SEQUENCE

18' CMP

AT GRADE CROSSING

NOVO NORDISK PHARMACEUTICAL  
INDUSTRIES, INC.  
DB 1486 PG 1

PREPARED BY: M. J. ALEXANDER	DATE: 06/2016
REVIEWED BY: A. A. NASH	DATE: 06/2016

**Terracon**  
Consulting Engineers & Scientists  
2401 BRENTWOOD ROAD, SUITE 107  
RALEIGH, NORTH CAROLINA 27604  
PHONE: (919) 873-2211 FAX: (919) 873-9555  
NC REGISTERED FIRM: F-0869

EMBAKMENT MONITORING SETTLEMENT GAUGE LOCATION PLAN					
REVISIONS					
NO.	BY	DATE	NO.	BY	DATE
1			3		
2			4		