

# SURVEY CONTROL SHEET R-5769

PROJECT REFERENCE NO. R-5769	SHEET NO. 1C-1
Location and Surveys	

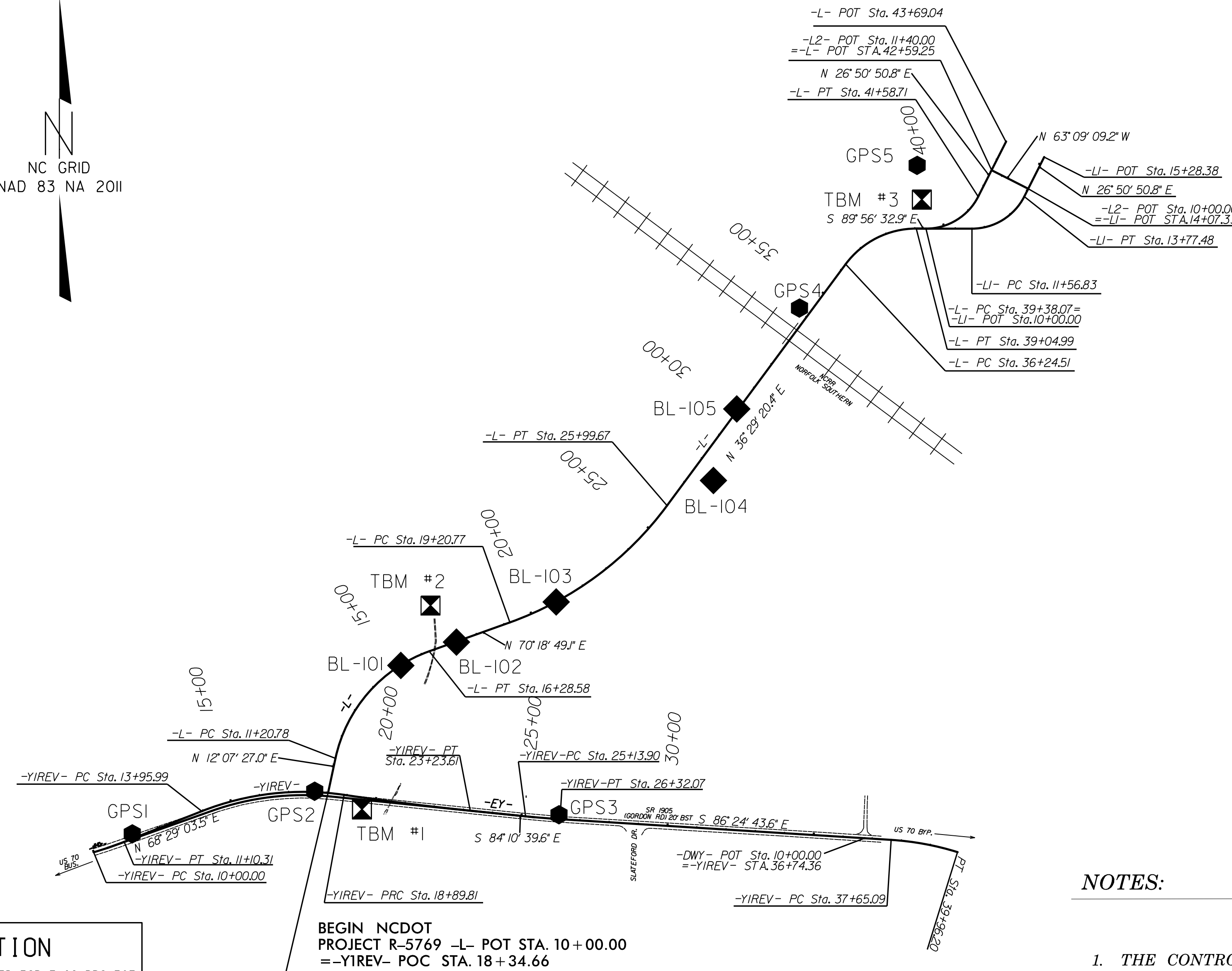
## BASELINE DATA

BY	POINT	DESC.	NORTH	EAST	ELEVATION	Y1REV STATION	OFFSET	BL	POINT	DESC.	NORTH	EAST	ELEVATION	L STATION	OFFSET
	GPS1		676881.1100	2175005.6400	282.27	11+45.96	15.16 LT		GPS2		677026.7000	2175628.5300	281.61	OUTSIDE PROJECT LIMITS	
	GPS2		677026.7000	2175628.5300	281.61	17+88.87	3.01 LT		BL-101		677455.7700	2175922.5610	281.81	15+19.37	1.31 RT
	GPS3		676946.3580	2176462.7960	289.41	26+27.59	14.84 LT		BL-102		677535.7050	2176112.4450	281.25	17+26.23	1.86 RT
									BL-103		677672.5980	2176452.8650	286.13	20+93.43	0.59 RT
									BL-104		678087.3050	2176989.9030	284.61	27+62.14	76.05 RT
									BL-105		678331.7540	2177069.5480	289.09	30+06.03	5.28 LT
									GPS4		678676.3330	2177284.0880	292.28	34+10.65	37.71 LT
									GPS5		679163.3700	2177685.8710	285.99	39+07.57	215.93 LT

## BENCHMARK DATA

```

*****
TBM1      ELEVATION = 278.45
N 676965      E 2175790
BL STATION 5+40.00 168 RIGHT
Y1REV- STA. 19+57.34 40.07' RT.
BENCLITE NAIL IN BASE OF 14" SWEET GUM
*****
TBM2      ELEVATION = 282.65
N 677661      E 2176024
BL STATION 11+93.00 149 LEFT
-L- STA. 16+85.13 145.43' LT.
BENCLITE NAIL IN BASE OF 18" GUM
*****
TBM3      ELEVATION = 286.33
N 679047      E 2177702
BL STATION 34+86.00 87 RIGHT
-L- STA. 39+23.65 99.24' LT.
BENCLITE NAIL IN BASE OF 15" SWEET GUM
*****
    
```



**DATUM DESCRIPTION**

THE LOCALIZED COORDINATE SYSTEM DEVELOPED FOR THIS PROJECT IS BASED ON THE STATE PLANE COORDINATES ESTABLISHED BY NCGS FOR MONUMENT "M&C-1" WITH NAD 83/NA 2011 STATE PLANE GRID COORDINATES OF NORTHING: 679994.2595(±ft) EASTING: 2175428.0044(±ft) ELEVATION: 294.47(±ft)

THE AVERAGE COMBINED GRID FACTOR USED ON THIS PROJECT (GROUND TO GRID) IS: 0.999884119

THE N.C. LAMBERT GRID BEARING AND LOCALIZED HORIZONTAL GROUND DISTANCE FROM "M&C-1" TO -L- STATION IS

ALL LINEAR DIMENSIONS ARE LOCALIZED HORIZONTAL DISTANCES VERTICAL DATUM USED IS NAVD 88

**BEGIN NCDOT PROJECT R-5769 -L- POT STA. 10+00.00 =-YIREV- POC STA. 18+34.66**

**NOTES:**

1. THE CONTROL DATA FOR THIS PROJECT CAN BE FOUND ELECTRONICALLY BY SELECTING PROJECT CONTROL DATA AT:  
[HTTPS://CONNECT.NCDOT.GOV/RESOURCES/LOCATION/](https://connect.ncdot.gov/resources/location/)

THE FILES TO BE FOUND ARE AS FOLLOWS:  
R5769\_WEI\_BASELINE.TXT

SITE CALIBRATION INFORMATION HAS NOT BEEN PROVIDED FOR THIS PROJECT. IF FURTHER INFORMATION IS NEEDED, PLEASE CONTACT THE LOCATION AND SURVEYS UNIT.

INDICATES GEODETIC CONTROL MONUMENTS USED OR SET FOR HORIZONTAL PROJECT CONTROL BY WETHERILL ENGINEERING.  
PROJECT CONTROL ESTABLISHED USING GLOBAL POSITIONING SYSTEM.

NOTE: DRAWING NOT TO SCALE