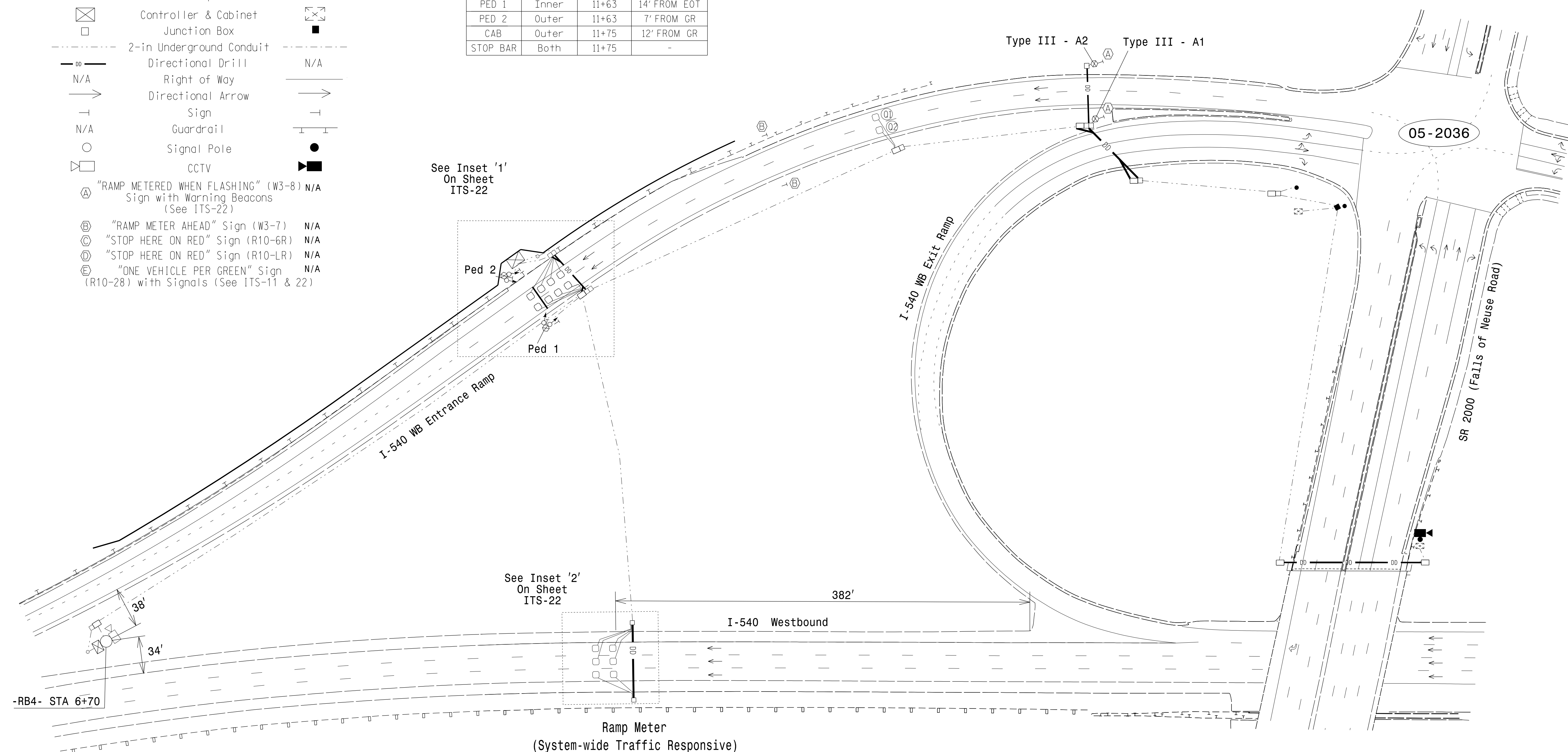


**LEGEND**

PROPOSED	EXISTING
	N/A
N/A	
N/A	
	N/A
	N/A
	N/A
	N/A
	N/A

**POLE AND CABINET STATIONS AND OFFSETS**

DEVICE NAME	RAMP LANE	STATION	OFFSET
A1	Inner	17+30	13' FROM EOT
A2	Outer	17+30	13' FROM EOT
PED 1	Inner	11+63	14' FROM EOT
PED 2	Outer	11+63	7' FROM GR
CAB	Outer	11+75	12' FROM GR
STOP BAR	Both	11+75	-



See Inset '1'  
On Sheet  
ITS-22

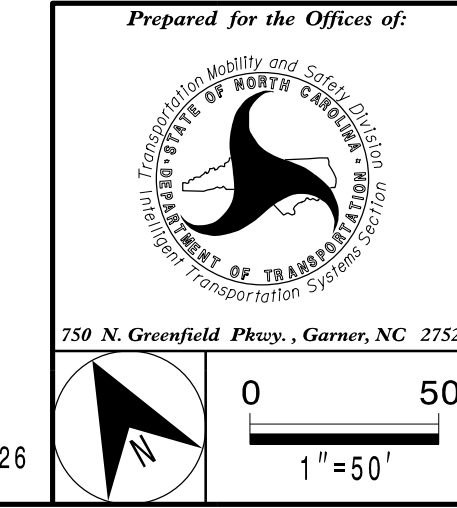
See Inset '2'  
On Sheet  
ITS-22

**Ramp Meter  
(System-wide Traffic Responsive)  
NOTES**

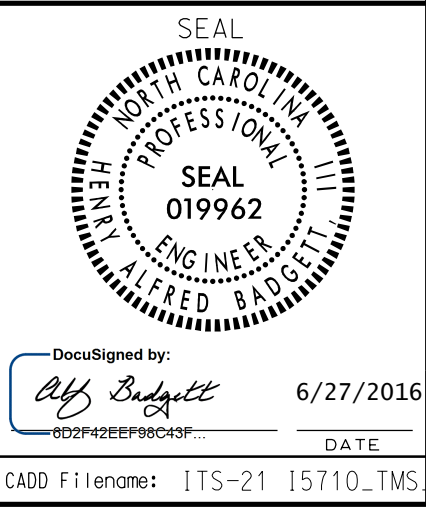
1. Refer to "Roadway Standards Drawings NCDOT" dated January 2012 and "Standard Specifications for Roads and Structures dated January 2012.
2. Ramp Meter shall operate Traffic Responsive.
3. Each lane shall operate alternately, one car per one green.
4. Loops Q1 and Q2 serve as queue backup detection. After 10 seconds of constant actuation, the detector units shall put in a call to the controller to activate alternate metering rate.
5. The Division Traffic Engineer shall determine the hours of operation.
6. Pavement markings are proposed.
7. Set all detector units to presence mode.

**New Installation Dual Lane Ramp Meter**

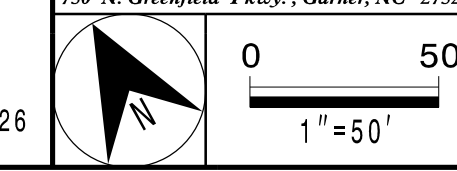
DOCUMENT NOT CONSIDERED FINAL UNLESS ALL SIGNATURES COMPLETED



I-540 WB Entrance Ramp at SR 2000 (Falls of Neuse Road)	
Division 5	Wake County
PLAN DATE: June 2016	REVIEWED BY: H A BADGETT
PREPARED BY: J O ENSLEY	REVIEWED BY: J T BROOKS
REVISIONS	INIT. DATE



**ATKINS**  
5200 77 CENTER DR, SUITE 500  
CHARLOTTE, NC 28217  
704.665.4411 NCBEEES #F-0326



27-JUN-2016 15:55  
D:\projects\2016\I-540\_Ramp\_Metering\Traffic\ITS-21 ITS-21 Falls of Neuse Signal.dgn  
WILEG034 AT 005300013