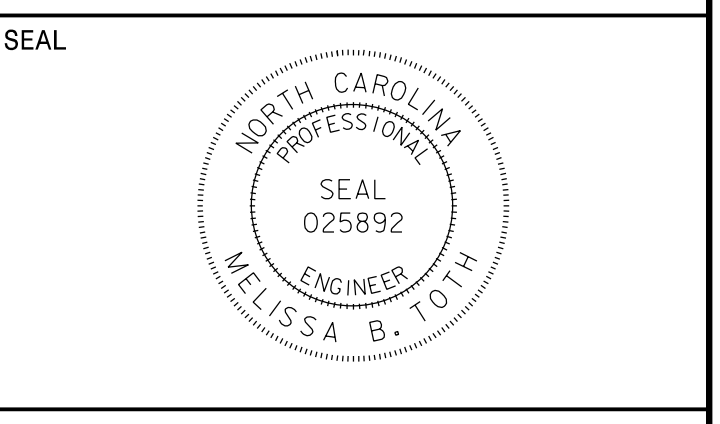

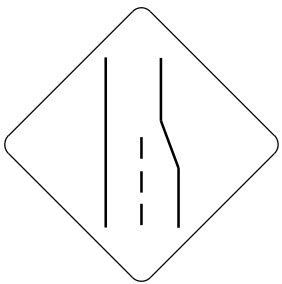
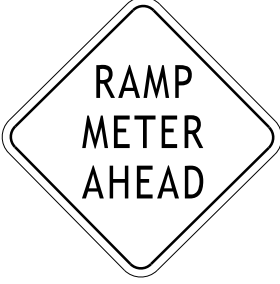




APPROVED: *Melissa B. Toth*  
DocuSigned by:  
 D860CF8E0404AF..  
 DATE: 6/8/2016



**DOCUMENT NOT CONSIDERED FINAL  
 UNLESS ALL SIGNATURES COMPLETED**

<p>401 QUANTITY REQ'D _6_</p>  <p>48 X 48 W9-1</p> <p>TWO "U" POSTS PER SIGN</p>	<p>402 QUANTITY REQ'D _4_</p>  <p>48 X 48 W4-2 (R)</p> <p>TWO "U" POSTS PER SIGN</p>	<p>403 QUANTITY REQ'D _8_</p>  <p>36 X 36 W3-7</p> <p>ONE "U" POST PER SIGN</p>	<p>404 QUANTITY REQ'D _4_</p>  <p>24 X 36 R10-6R</p> <p>ONE "U" POST PER SIGN</p>	<p>405 QUANTITY REQ'D _4_</p>  <p>24 X 36 R10-6L</p> <p>ONE "U" POST PER SIGN</p>		

08-JUN-2016 09:53  
 0: Transpor\Tation\Production\Trans\NC0001\I-540 Ramp Metering\Traffic\Signing& Delineation\I5710\_SGN\_Sign\_03.dgn  
 WILEZ054 AT DUS30019