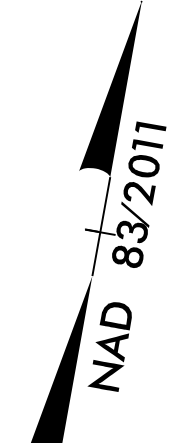


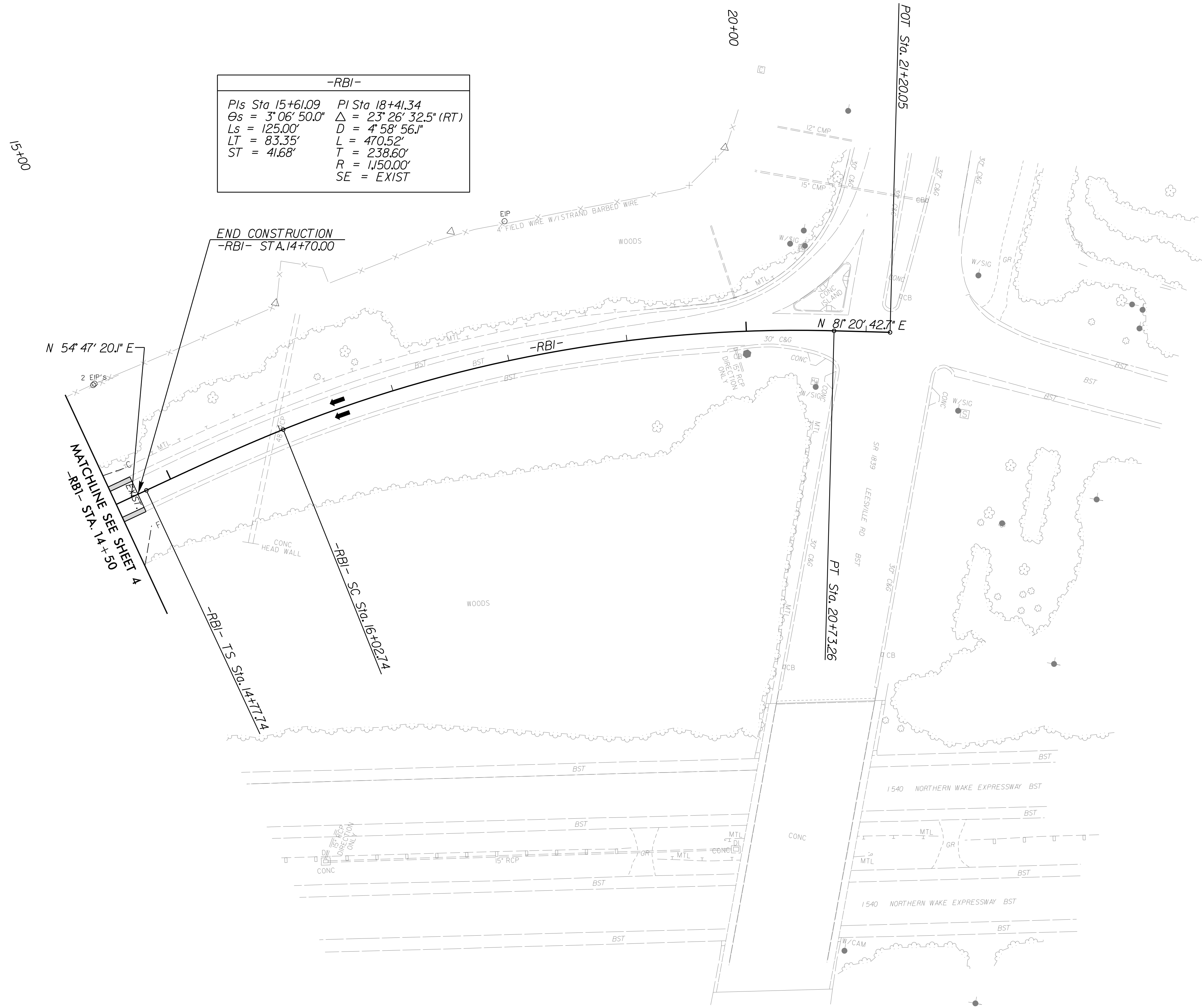
8/17/99

PROJECT REFERENCE NO. <i>1-5710</i>	SHEET NO. <i>5</i>
RW SHEET NO.	
ROADWAY DESIGN ENGINEER SEAL 024929 CLINTON J. MORGAN 6/28/2016	HYDRAULICS ENGINEER SEAL 041957 DAVID ROBERT GOODSON 6/28/2016
<b>DOCUMENT NOT CONSIDERED FINAL UNLESS ALL SIGNATURES COMPLETED</b>	

# LEESVILLE ROAD



-RBI-	
<i>PIs Sta 15+61.09</i>	<i>PI Sta 18+41.34</i>
$\Theta_s = 3^{\circ}06'50.0''$	$\Delta = 23^{\circ}26'32.5''$ (RT)
$L_s = 125.00'$	$D = 4^{\circ}58'56.1''$
$LT = 83.35'$	$L = 470.52'$
$ST = 41.68'$	$T = 238.60'$
	$R = 1,150.00'$
	$SE = EXIST$



PAVED SHOULDER

NOTE: SEE SHEET 12 FOR -RBI- PROFILE VIEW

28 JUN 2016 15:00  
 R:\Projects\15710\_Leesville\_PSH05.dgn  
 \$\$\$\$\$\$USERNAME\$\$\$\$\$\$