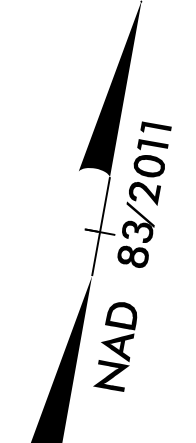
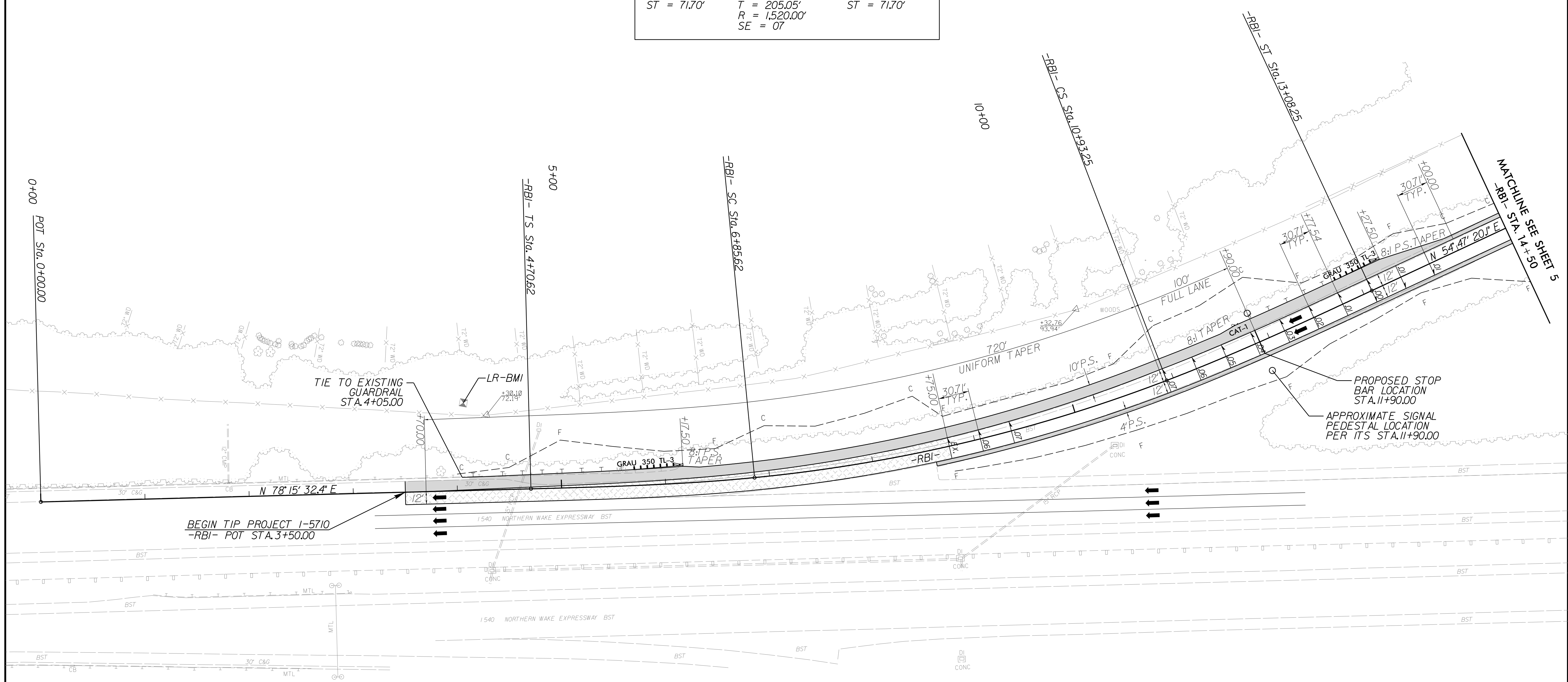


|  |  |
|--|--|
| PROJECT REFERENCE NO.<br>1-5710  | SHEET NO.<br>4   |
| RW SHEET NO.   |  |
| ROADWAY DESIGN ENGINEER<br>SEAL<br>024929<br>CLINTON J. HAYES<br>6/28/2016 | HYDRAULICS ENGINEER<br>SEAL<br>041957<br>ROBERT SPOONER<br>6/28/2016 |
| <b>DOCUMENT NOT CONSIDERED FINAL<br/>UNLESS ALL SIGNATURES COMPLETED</b>   |  |

# LEESVILLE ROAD



| -RBI-                    |                              |                          |
|--------------------------|------------------------------|--------------------------|
| Pls Sta 6+13.99          | PI Sta 8+90.67               | Pls Sta 11+64.96         |
| $\Theta_s = 4'03'07.8''$ | $\Delta = 15'21'56.7''$ (LT) | $\Theta_s = 4'03'07.8''$ |
| $L_s = 215.00'$          | $D = 3'46'10.1''$            | $L_s = 215.00'$          |
| $LT = 143.37'$           | $L = 407.64'$                | $LT = 143.37'$           |
| $ST = 71.70'$            | $T = 205.05'$                | $ST = 71.70'$            |
|                          | $R = 1,520.00'$              |                          |
|                          | $SE = 07$                    |                          |



- PAVED SHOULDER
- MILL AND RESURFACE

NOTE: SEE SHEET 12 FOR -RBI- PROFILE VIEW

28 JUN 2016 15:00 P:\Roadway\15710\_Rdy\_PSH04.dgn