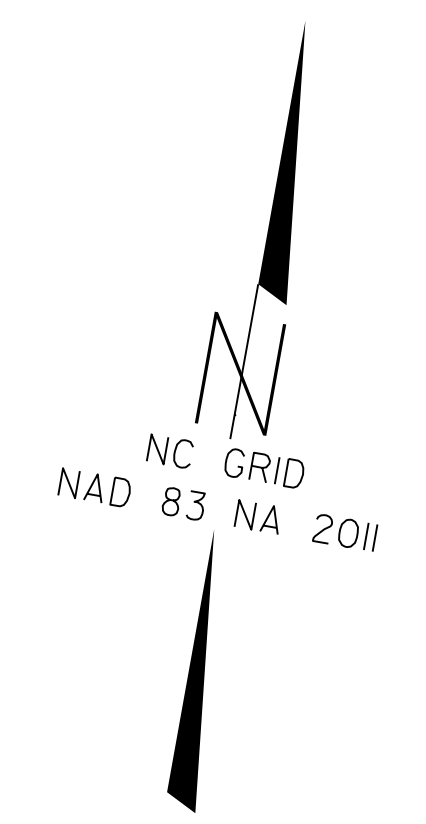


6/2/99

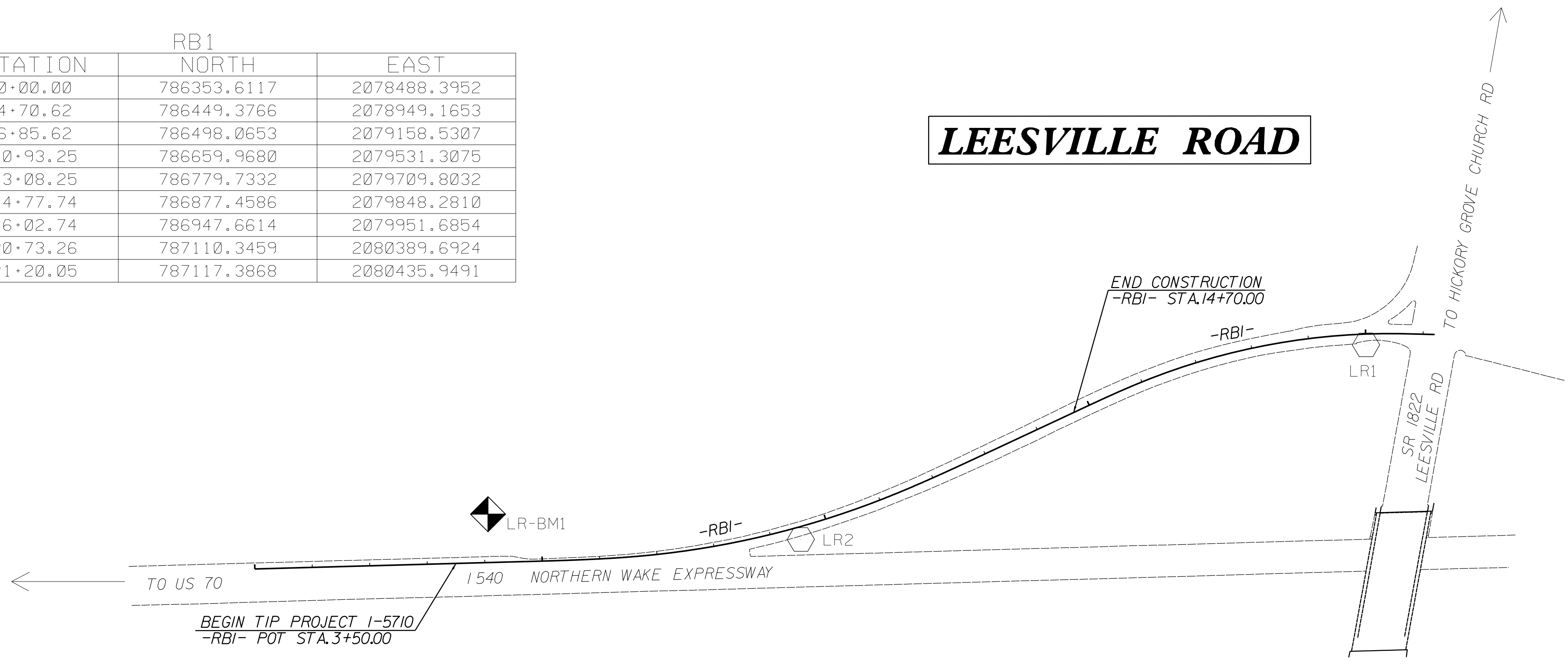
PROJECT REFERENCE NO.	SHEET NO.
I-5710	1C-1
Location and Surveys	

SURVEY CONTROL I-5710

RB1			
TYPE	STATION	NORTH	EAST
POT	0+00.00	786353.6117	2078488.3952
TS	4+70.62	786449.3766	2078949.1653
SC	6+85.62	786498.0653	2079158.5307
CS	10+93.25	786659.9680	2079531.3075
ST	13+08.25	786779.7332	2079709.8032
TS	14+77.74	786877.4586	2079848.2810
SC	16+02.74	786947.6614	2079951.6854
PT	20+73.26	787110.3459	2080389.6924
POT	21+20.05	787117.3868	2080435.9491



LEESVILLE ROAD



CONTROL POINT	DESC.	NORTH	EAST	ELEVATION	RB1 STATION	OFFSET
301	LR1	787078.582	2080321.580	518.30	19+99.89	18.85 RT
302	LR2	786571.807	2079413.995	494.13	9+49.09	21.67 RT

DATUM DESCRIPTION

THE LOCALIZED COORDINATE SYSTEM DEVELOPED FOR THIS PROJECT IS BASED ON THE STATE PLANE COORDINATES ESTABLISHED BY NCDOT FOR MONUMENT "SF1" WITH NAD 83/NA 2011 STATE PLANE GRID COORDINATES OF NORTHING: 787201.655(++) EASTING: 2103250.412(++) ELEVATION: 466.509(++)

THE AVERAGE COMBINED GRID FACTOR USED ON THIS PROJECT (GROUND TO GRID) IS: 0.99992221

THE N.C. LAMBERT GRID BEARING AND LOCALIZED HORIZONTAL GROUND DISTANCE FROM "SF1" TO -RBI- STATION 3+50.00 IS
 S 88°10'40.56" W 24431.69'

ALL LINEAR DIMENSIONS ARE LOCALIZED HORIZONTAL DISTANCES
 VERTICAL DATUM USED IS NAVD 88

NOTES:

- SITE CALIBRATION INFORMATION HAS NOT BEEN PROVIDED FOR THIS PROJECT. IF FURTHER INFORMATION IS NEEDED, PLEASE CONTACT THE LOCATION AND SURVEYS UNIT.
- INDICATES GEODETIC CONTROL MONUMENTS USED OR SET FOR HORIZONTAL PROJECT CONTROL BY THE NCDOT LOCATION AND SURVEYS UNIT.
- PROJECT CONTROL ESTABLISHED USING GLOBAL POSITIONING SYSTEM.

BENCH MARK DATA

LR-BM1 ELEVATION = 476.44'
 N 786519 E 2078871
 RB1 STATION 4+08.00 84 LEFT
 NAIL SET IN 10" POPLAR TREE

GEOID G12NC
 NOTE: DRAWING NOT TO SCALE

08 JUN 2016 16:00
 R:\PROJECTS\I-5710\15710_1C-1.dgn
 USER: JG