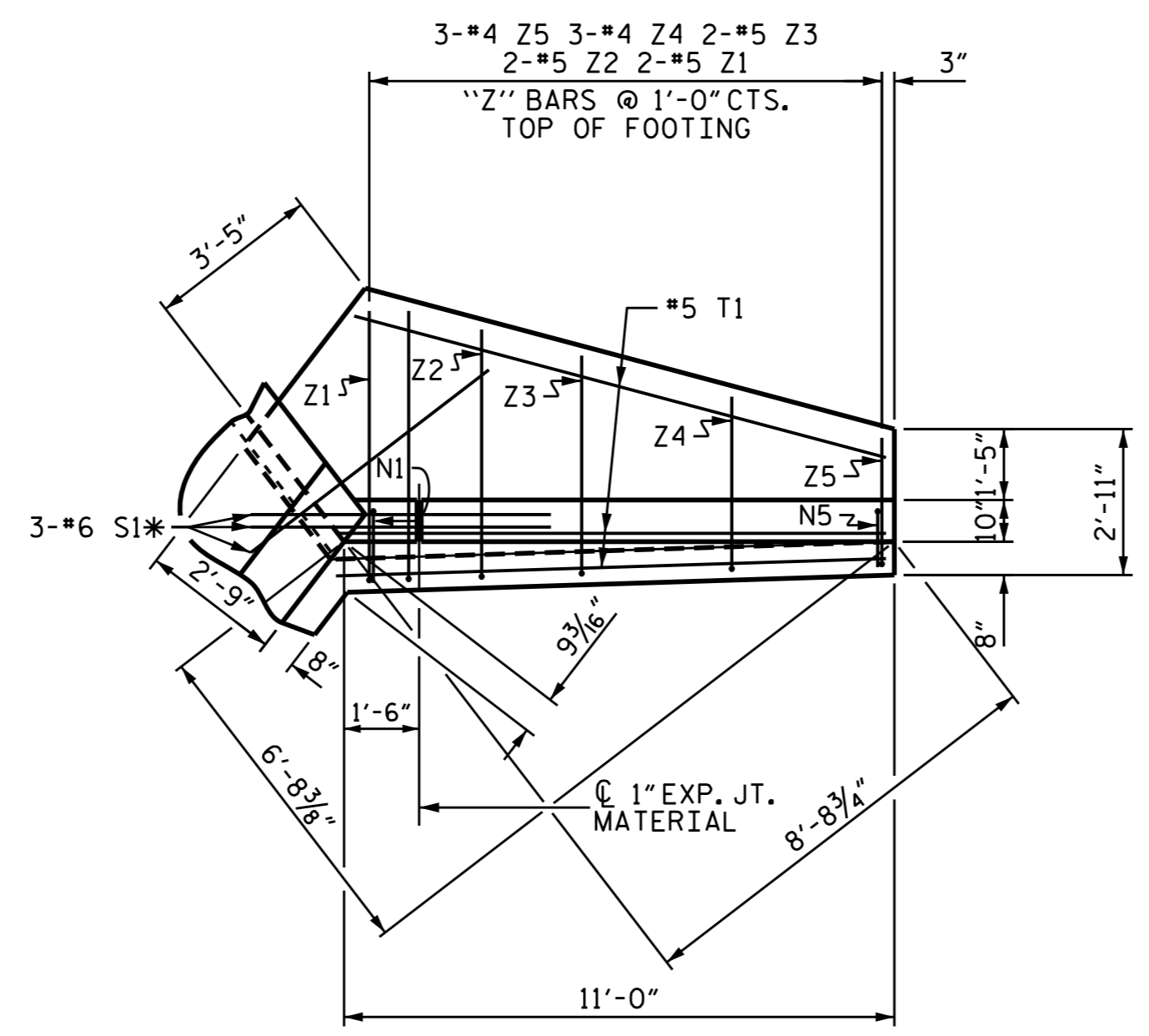
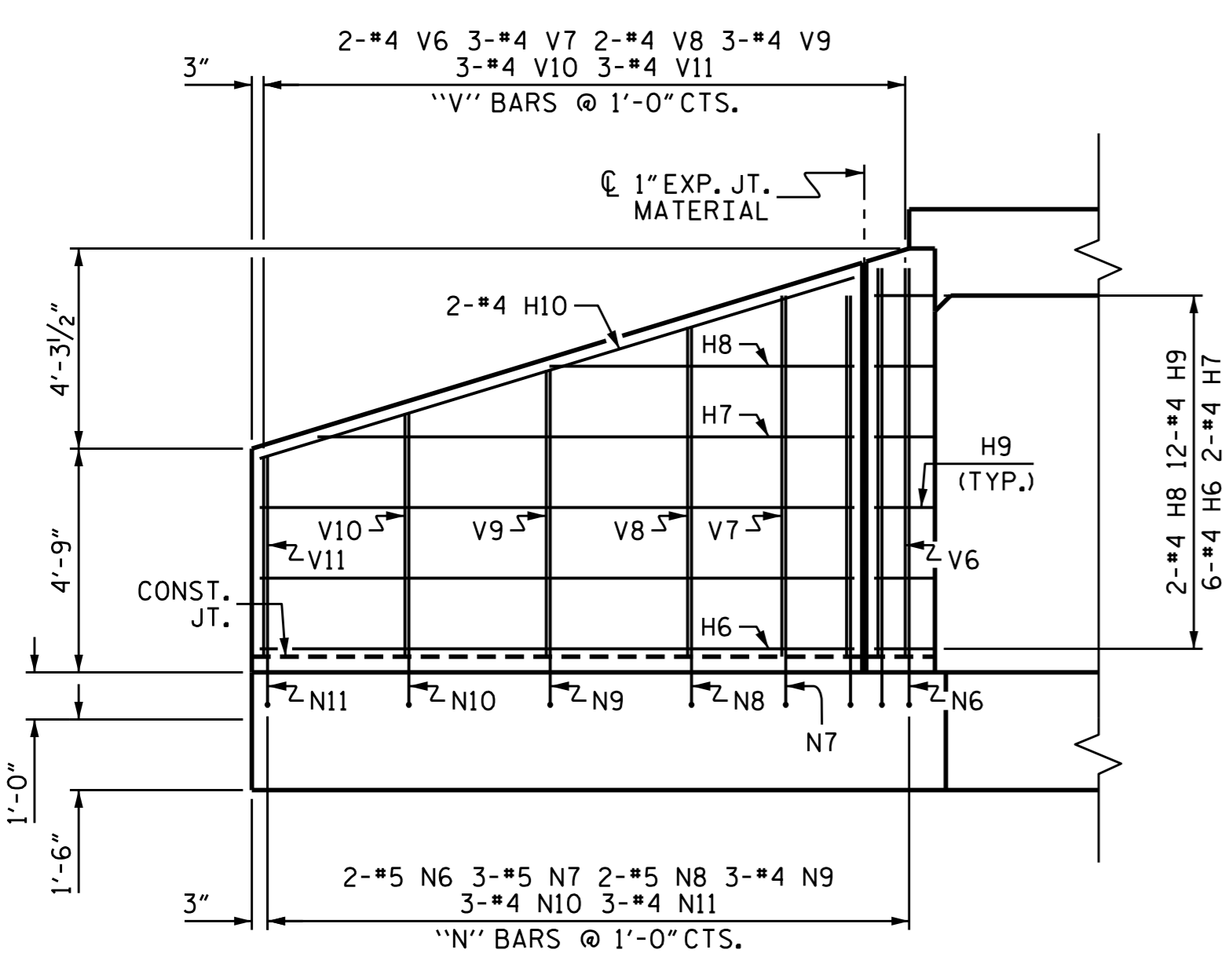


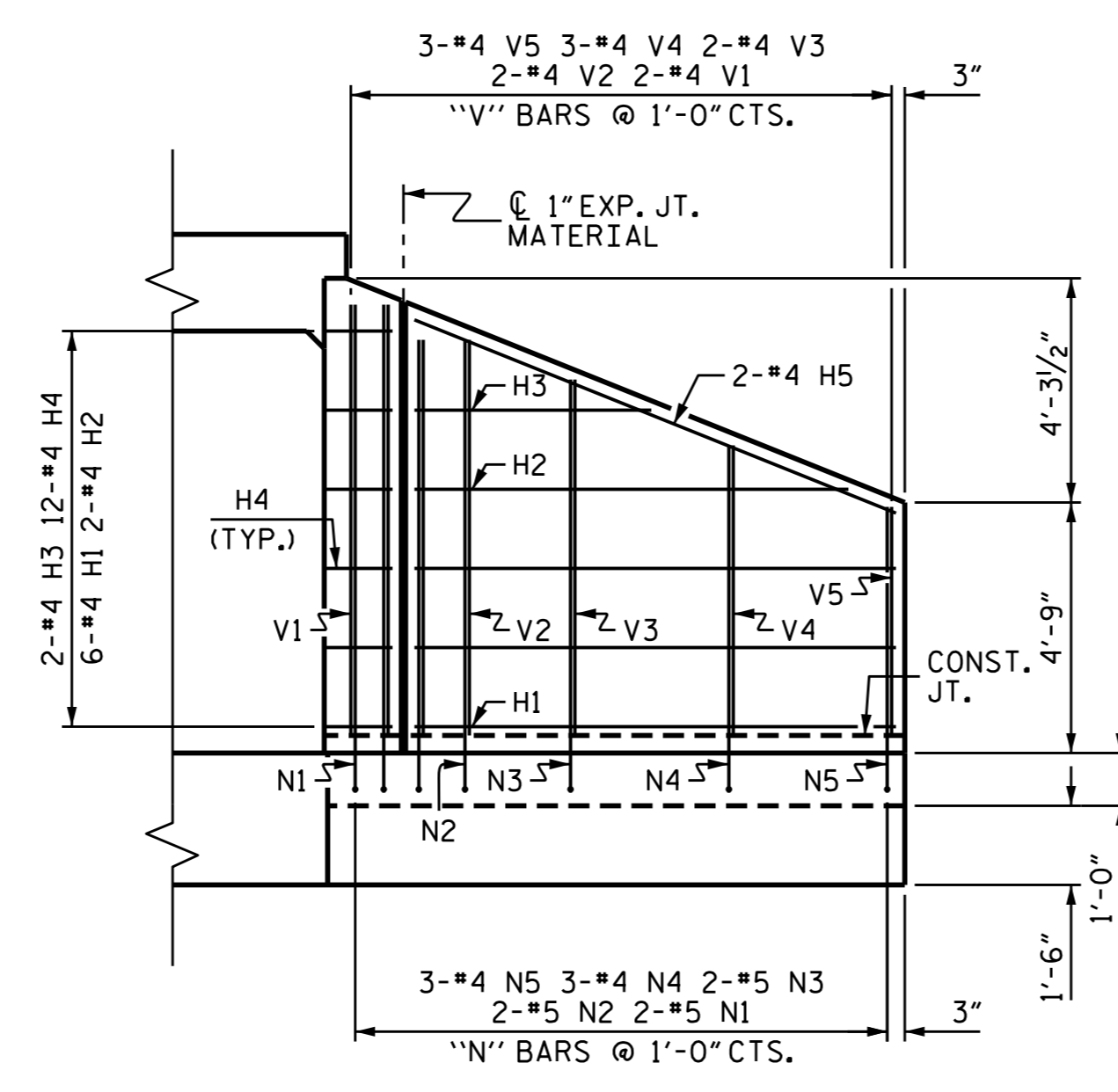
PLAN W1



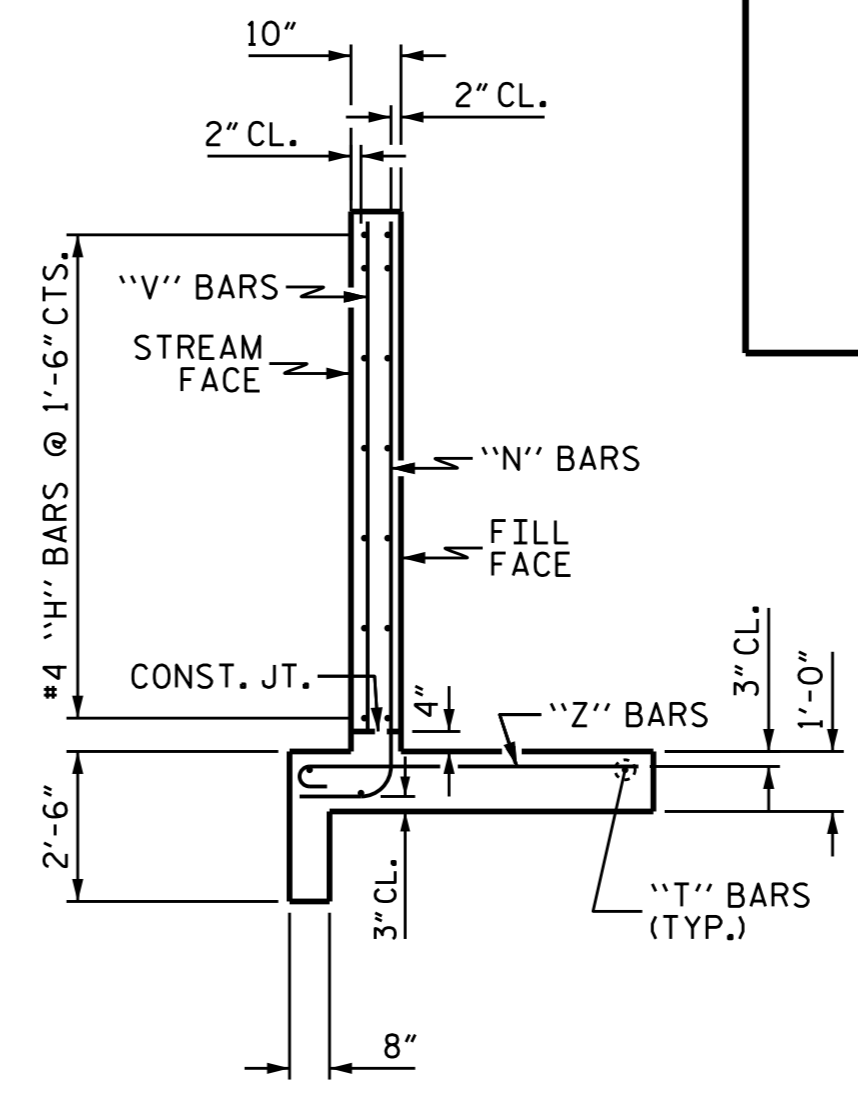
PLAN W2



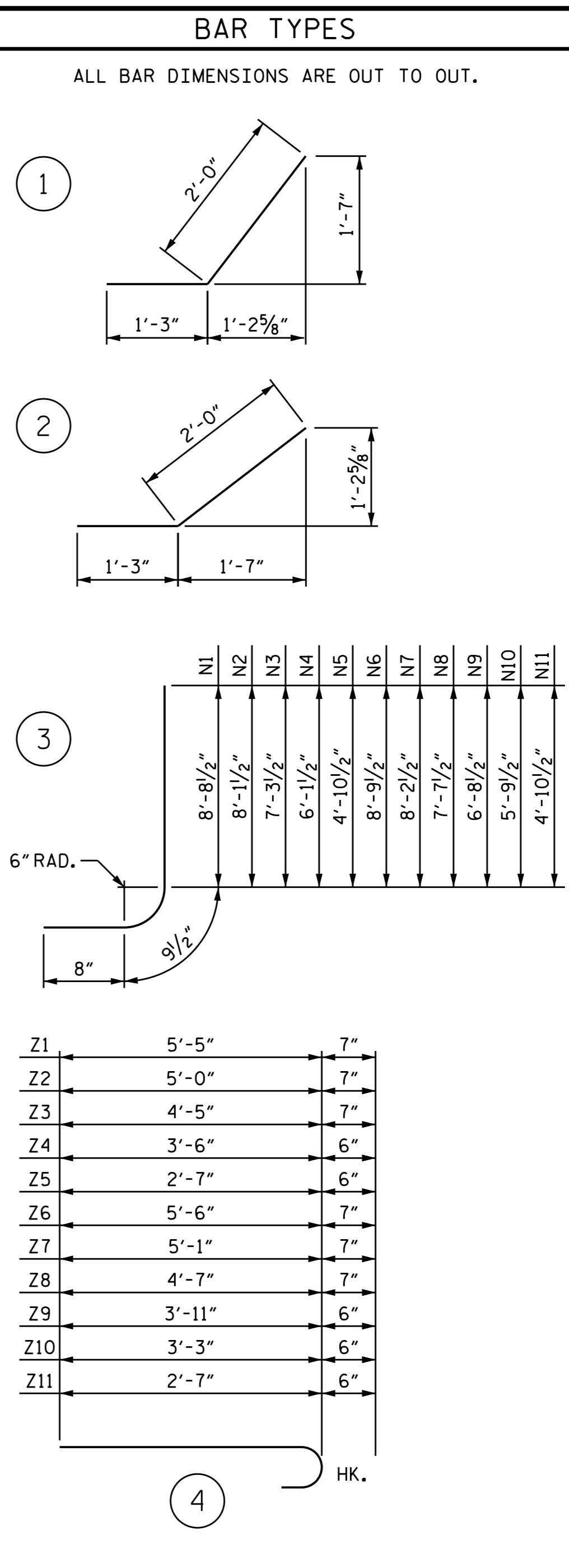
ELEVATION W1



ELEVATION W2



TYPICAL WING SECTION



Z1	5'-5"	7"
Z2	5'-0"	7"
Z3	4'-5"	7"
Z4	3'-6"	6"
Z5	2'-7"	6"
Z6	5'-6"	7"
Z7	5'-1"	7"
Z8	4'-7"	7"
Z9	3'-11"	6"
Z10	3'-3"	6"
Z11	2'-7"	6"

BILL OF MATERIAL					
BAR	NO.	SIZE	TYPE	LENGTH	WEIGHT
H1	6	#4	STR	9'-1"	36
H2	2	#4	STR	8'-2"	11
H3	2	#4	STR	4'-5"	6
H4	12	#4	1	3'-3"	26
H5	2	#4	STR	9'-10"	13
H6	6	#4	STR	12'-7"	50
H7	2	#4	STR	11'-4"	15
H8	2	#4	STR	6'-5"	9
H9	12	#4	2	3'-3"	26
H10	2	#4	STR	13'-2"	18
N1	2	#5	3	10'-2"	21
N2	2	#5	3	9'-7"	20
N3	2	#5	3	8'-9"	18
N4	3	#4	3	7'-7"	15
N5	3	#4	3	6'-4"	13
N6	2	#5	3	10'-3"	21
N7	3	#5	3	9'-8"	30
N8	2	#5	3	9'-1"	19
N9	3	#4	3	8'-2"	16
N10	3	#4	3	7'-3"	15
N11	3	#4	3	6'-4"	13
S1	6	#6	STR	6'-0"	54
T1	3	#5	STR	11'-0"	34
T2	3	#5	STR	14'-6"	45
V1	2	#4	STR	8'-2"	11
V2	2	#4	STR	7'-6"	10
V3	2	#4	STR	6'-9"	9
V4	3	#4	STR	5'-6"	11
V5	3	#4	STR	4'-4"	9
V6	2	#4	STR	8'-3"	11
V7	3	#4	STR	7'-8"	15
V8	2	#4	STR	7'-0"	9
V9	3	#4	STR	6'-1"	12
V10	3	#4	STR	5'-2"	11
V11	3	#4	STR	4'-3"	9
Z1	2	#5	4	6'-0"	13
Z2	2	#5	4	5'-7"	12
Z3	2	#5	4	5'-0"	10
Z4	3	#4	4	4'-0"	8
Z5	3	#4	4	3'-1"	6
Z6	2	#5	4	6'-1"	13
Z7	3	#5	4	5'-8"	18
Z8	2	#5	4	5'-2"	11
Z9	3	#4	4	4'-5"	9
Z10	3	#4	4	3'-9"	8
Z11	3	#4	4	3'-1"	6
REINFORCING STEEL FOR 2 WINGS					775 LBS
CLASS A CONCRETE					
2 WINGS					11.3 CY
1 HEADWALL					0.4 CY
1 END CURTAIN WALL					0.4 CY
TOTAL					12.1 CY

PROJECT NO. U-2524D  
 GUILFORD COUNTY  
 STATION: 505+19.00 -L-

SHEET 5 OF 7



STATE OF NORTH CAROLINA  
 DEPARTMENT OF TRANSPORTATION  
 RALEIGH  
**STANDARD WINGS FOR CONCRETE BOX CULVERT**  
 H = 8'-0" SLOPE = 2:1  
 105° SKEW @ INLET END

REVISIONS					
NO.	BY:	DATE:	NO.	BY:	DATE:
1			3		
2			4		

SHEET NO.	
C-32	TOTAL SHEETS 34

ASSEMBLED BY : REZA KOUCHEKI DATE : 1/13/16  
 CHECKED BY : S.B.WILLIAMS DATE : 4/12/16  
 DRAWN BY : CCJ 01/00  
 CHECKED BY : RWW 03/00

DOCUMENT NOT CONSIDERED FINAL UNLESS ALL SIGNATURES COMPLETED