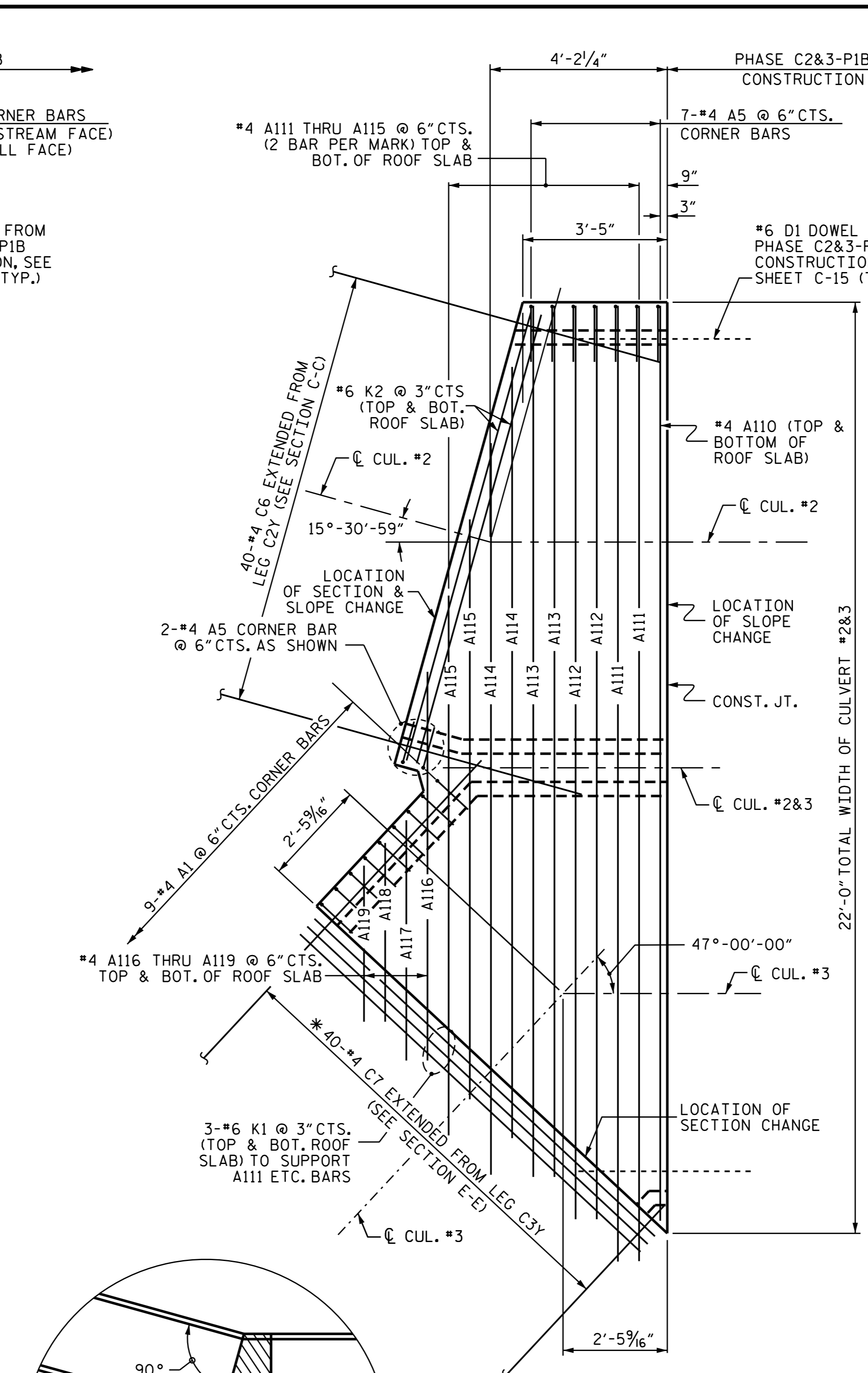
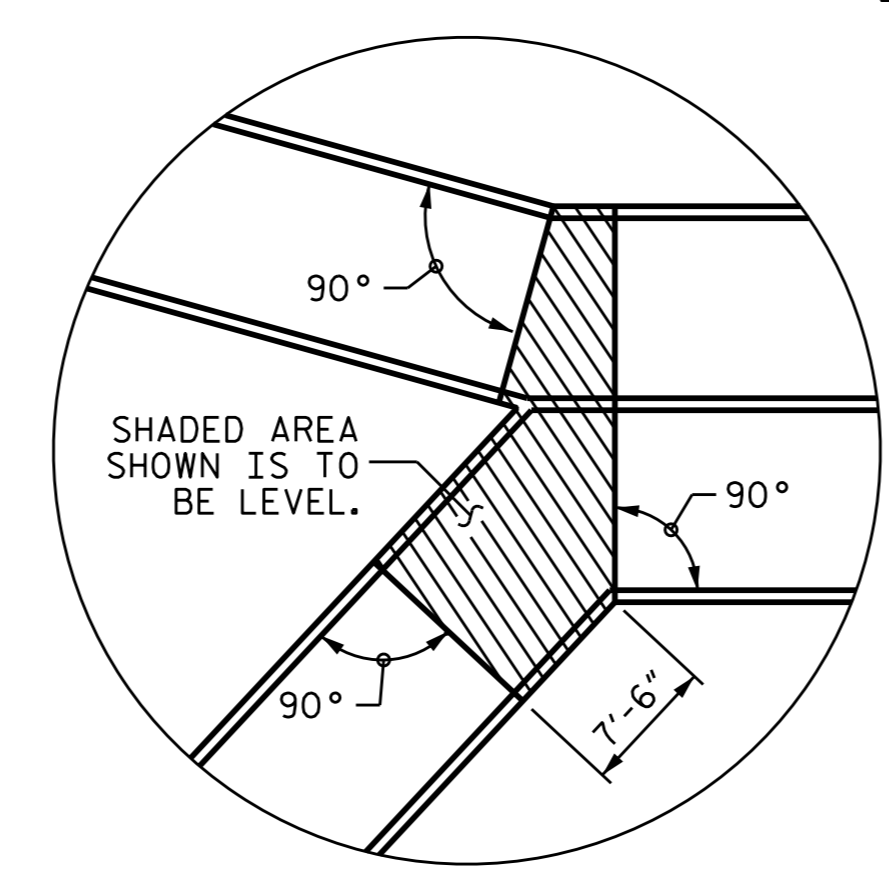


**DETAIL "C"  
 FLOOR SLAB DETAILS**  
 \*FIELD BEND OR CUT "C" BARS AS NECESSARY.



**DETAIL "D"  
 ROOF SLAB DETAILS**  
 \*FIELD BEND OR CUT "C" BARS AS NECESSARY.



**LEVEL AREA**  
 FOR BOTH FLOOR & ROOF SLABS.

BARREL THICKNESS DIMENSIONS					
SEGMENT	SECTION	ROOF	FLOOR	EXT. WALL	INT. WALL
LEG C2Y	C-C	8"	9"	8"	8"
LEG C3Y	E-E	8 1/2"	9 1/2"	8"	8"
DETAILS C&D	---	10 1/2"	11"	8"	8"

BAR SCHEDULE											
DETAILS C & D						LEG C2Y (1-10'X7' RCBC)					
BAR	NO.	SIZE	TYPE	LENGTH	WEIGHT	BAR	NO.	SIZE	TYPE	LENGTH	WEIGHT
A1	9	#4	1	5'-8"	34	A3	128	#4	STR	6'-5"	549
A2	9	#4	1	5'-4"	32	A4	128	#4	STR	6'-3"	534
A5	9	#4	1	4'-8"	28	A350	64	#6	STR	11'-0"	1,057
A6	9	#4	1	4'-3"	26	A450	64	#5	STR	11'-0"	734
A110	2	#4	STR	21'-6"	29						
A111	4	#4	STR	22'-6"	60	B3	64	#4	STR	7'-11"	338
A112	4	#4	STR	21'-6"	57	B4	128	#4	STR	6'-4"	542
A113	4	#4	STR	20'-6"	55						
A114	4	#4	STR	18'-3"	49	C6	80	#4	STR	21'-5"	1,145
A115	4	#4	STR	13'-9"	37						
A116	2	#4	STR	9'-3"	12	REINFORCING STEEL = 4,899 LBS.					
A117	2	#4	STR	5'-8"	8	LEG C3Y (1-10'X7' RCBC)					
A118	2	#4	STR	4'-3"	6	BAR	NO.	SIZE	TYPE	LENGTH	WEIGHT
A119	2	#4	STR	3'-9"	5	A1	168	#4	1	5'-8"	636
						A2	168	#4	1	5'-4"	599
A210	1	#4	STR	21'-6"	14	A210	84	#6	STR	11'-0"	1,388
A211	2	#4	STR	22'-6"	30	A211	84	#6	STR	11'-0"	1,388
A212	2	#4	STR	21'-6"	29	A150	84	#6	STR	8'-0"	449
A213	2	#4	STR	20'-6"	27	A250	84	#6	STR	6'-4"	711
A214	2	#4	STR	18'-3"	24	B1	84	#4	STR	26'-6"	1,416
A215	2	#4	STR	13'-9"	18	B2	168	#4	STR	6'-11"	166
A216	1	#4	STR	9'-3"	6	REINFORCING STEEL = 6,753 LBS.					
A217	1	#4	STR	5'-8"	4	BAR TYPE					
A218	1	#4	STR	4'-3"	3	A1	2'-3"	A2	1'-8"	A3	2'-0"
A219	1	#4	STR	3'-9"	3	A4	3'-7 1/2"	A5	1'-7 1/2"	A6	1'-10"
A410	1	#5	STR	21'-6"	22	A2	1'-7 1/2"	6" RAD.			
A411	2	#5	STR	22'-6"	47	A3	3'-7 1/2"	9 1/2"			
A412	2	#5	STR	21'-6"	45	A4	3'-7 1/2"	①			
A413	2	#5	STR	20'-6"	43	A5	1'-7 1/2"	BAR DIMENSIONS ARE OUT TO OUT			
A414	2	#5	STR	18'-3"	38	A6	1'-7 1/2"				
A415	2	#5	STR	13'-9"	29						
A416	1	#5	STR	9'-3"	10						
A417	1	#5	STR	5'-8"	6						
A418	1	#5	STR	4'-3"	4						
A419	1	#5	STR	3'-9"	4						
B4	11	#4	STR	8'-5"	62						
B5	18	#4	STR	6'-4"	76						
B6	11	#4	STR	8'-5"	62						
K1	12	#6	STR	11'-0"	198						
K2	8	#6	STR	11'-0"	132						
REINFORCING STEEL = 1,373 LBS.											

TOTAL C2&3Y-P1 QUANTITIES	
CLASS A CONCRETE	
LEG C2Y SEC. C-C @ 0.944 CY/FT	30.2 C.Y.
LEG C3Y SEC. E-E @ 0.979 CY/FT	41.1 C.Y.
DETAILS C & D	9.8 C.Y.
TOTAL	81.1 C.Y.
REINFORCING STEEL	
LEG C2Y SEC. C-C @ 4,899 LBS.	
LEG C3Y SEC. E-E @ 6,753 LBS.	
DETAILS C & D 1,373 LBS.	
TOTAL	13,025 LBS.
FOUNDATION COND. MATERIAL	87 TONS
CULVERT EXCAVATION	LUMP SUM

PROJECT NO. U-2524D  
GUILFORD COUNTY  
 STATION: 9+04.29 -RPAY8-  
 SHEET 6 OF 9

STATE OF NORTH CAROLINA  
 DEPARTMENT OF TRANSPORTATION  
 RALEIGH  
**CULVERT #2&3  
 DOUBLE 10' X 7' RCBC  
 C2&3Y-P1 DETAILS**



DocuSigned by:  
 Ting Fang  
 E7208A00977435  
 7/15/2016  
 DOCUMENT NOT CONSIDERED  
 FINAL UNLESS ALL  
 SIGNATURES COMPLETED

DRAWN BY: P. K. NEWTON DATE: 6/21/16  
 CHECKED BY: T. H. FANG DATE: 6/21/16  
 DESIGN ENGINEER OF RECORD: P. K. NEWTON DATE: 7/13/16

REVISIONS					SHEET NO.
NO.	BY:	DATE:	NO.	BY:	DATE:
1			3		
2			4		

TOTAL SHEETS: 34