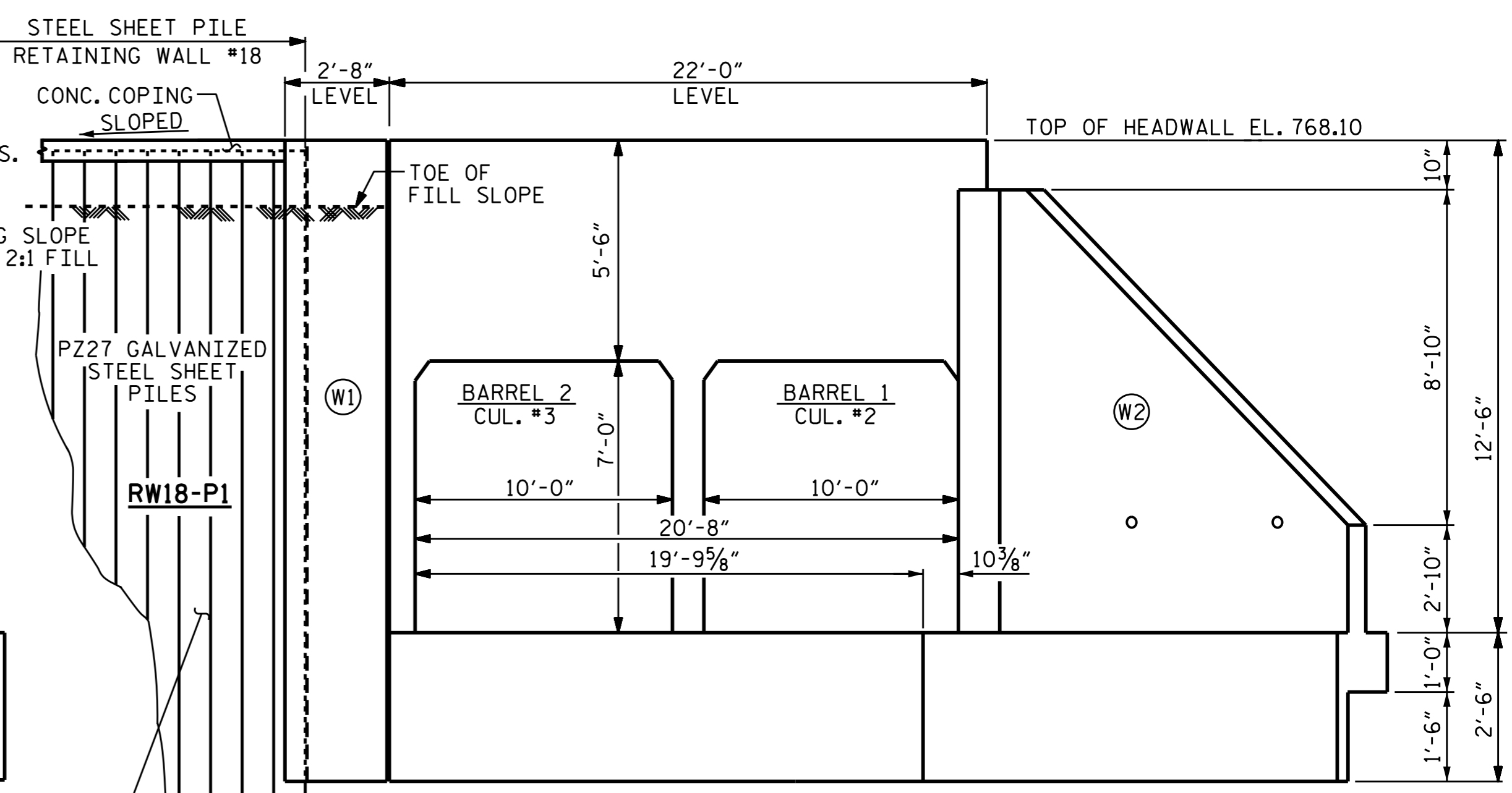
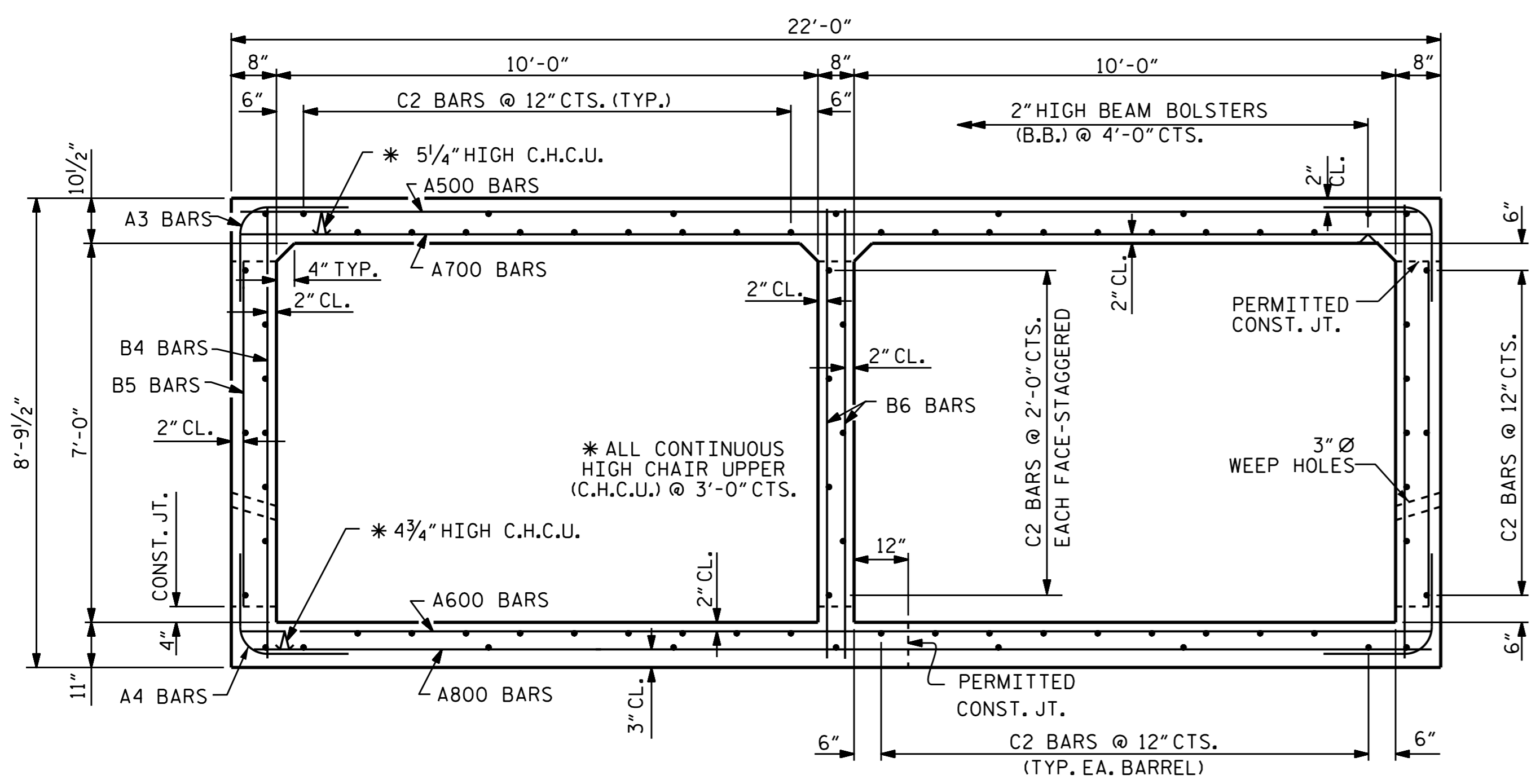


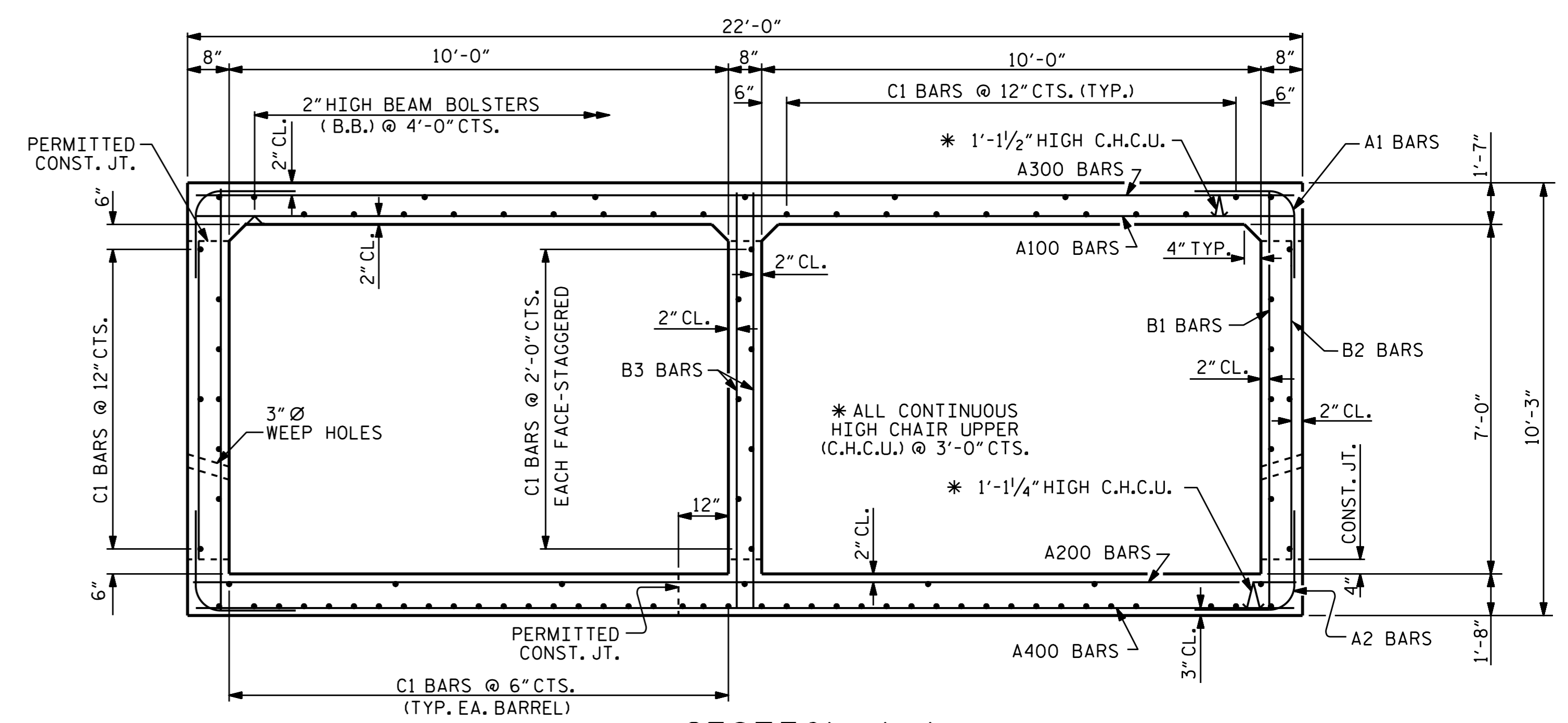
CULVERT SECTION ALONG Q CULVERT



OUTLET END ELEVATION
 LOOKING UPSTREAM

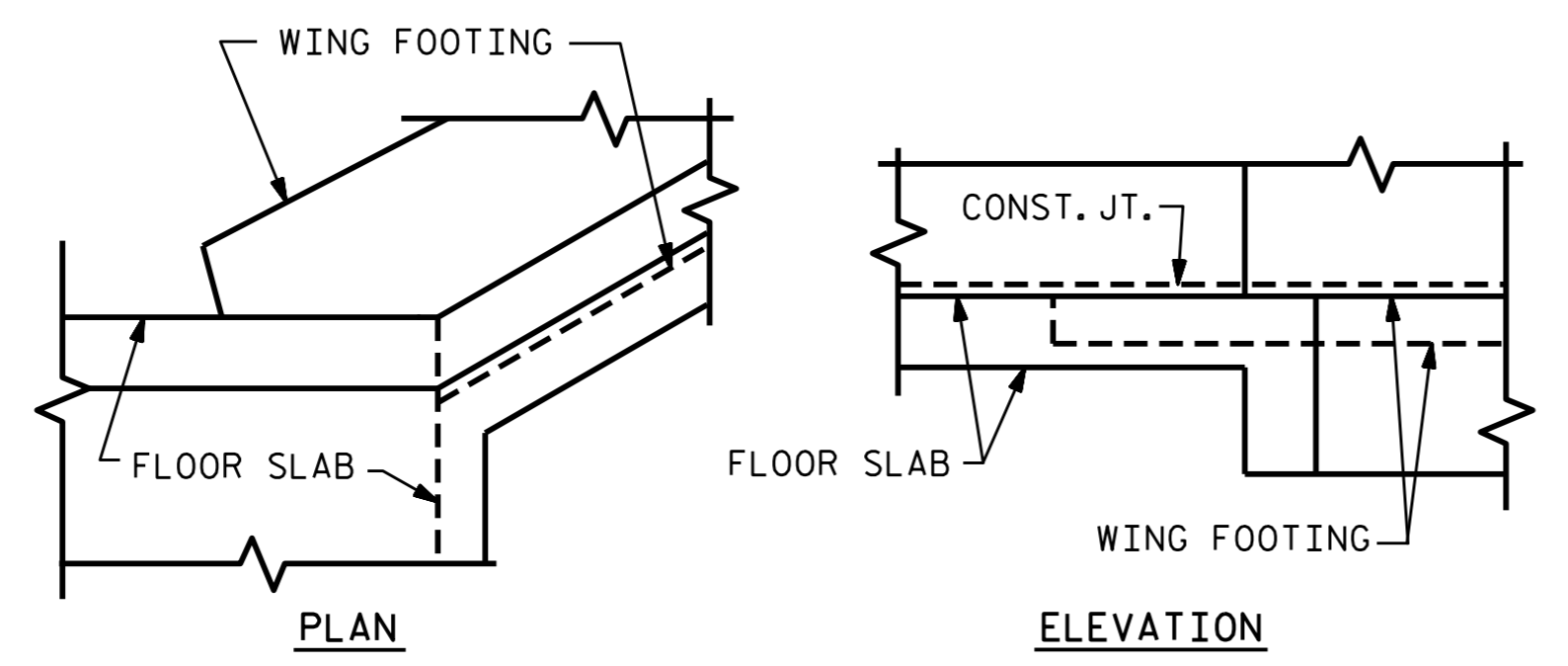


SECTION B-B
 THERE ARE 77 C2 BARS IN SECTION OF BARREL.



SECTION A-A
 THERE ARE 99 C1 BARS IN SECTION OF BARREL.

I HEREBY CERTIFY THESE PLANS
 ARE THE AS-BUILT PLANS



CONNECTION OF WING FOOTING & FLOOR SLAB
 FOR SECTION A-A, THE FLOOR SLAB IS THICKER THAN FOOTING

TOTAL CULVERT C2&3-P1 QUANTITIES			
ITEM	C2&3-P1A	C2&3-P1B	TOTAL C2&3-P1
CLASS A CONCRETE			
BARREL & MISC ITEMS *	1,599.2 C.Y.	414.9 C.Y.	2,014.1 C.Y.
WING (W2)	8.0 C.Y.	--	8.0 C.Y.
SUBTOTAL	1,607.2 C.Y.	414.9 C.Y.	2,022.1 C.Y.
REINFORCING STEEL			
BARREL & MISC. ITEM *	151,350 LBS.	51,260 LBS.	202,610 LBS.
WING (W2)	525 LBS.	--	525 LBS.
SUBTOTAL	151,875 LBS.	51,260 LBS.	203,135 LBS.
CULVERT EXCAVATION	LUMP SUM	LUMP SUM	LUMP SUM
FOUNDATION COND. MAT'L	917 TONS	383 TONS	1,300 TONS

* MISC. ITEMS' QUANTITY INCLUDE HEADWALL, CURTAIN WALL, WING W1, AND COPING.

PROJECT NO. U-2524D
GUILFORD COUNTY
 STATION: 9+04.29 -RPAY8-
 SHEET 2 OF 9



STATE OF NORTH CAROLINA
 DEPARTMENT OF TRANSPORTATION
 RALEIGH
 BARREL STANDARD
 CULVERT #2&3
 DOUBLE 10' X 7' RCBC
 C2&3-P1A & C2&3-P1B
 18°-16'-20" SKEW

REVISIONS
 NO. BY: DATE: NO. BY: DATE:
 1 I.T.F. 7/6/16
 2 J.A.J. 7/16/16

NO.	BY:	DATE:	NO.	BY:	DATE:
1	I.T.F.	7/6/16	3		
2	J.A.J.	7/16/16	4		

REVISED 11-9-99 BY M.M. CHECKED BY R.W.M.
 REDRAWN NOV. 1990 BY TSS CHECKED BY ARB

ASSEMBLED BY: M. SHAHIDI DATE: 6/8/16
 CHECKED BY: I. H. FANG DATE: 7/6/16
 DRAWN BY: RALPH D. UNDERWOOD DATE: MAY 1971
 CHECKED BY: JOEL A. JOHNSON DATE: JULY 1971

SPECIAL
STANDARD

DOCUMENT NOT CONSIDERED
 FINAL UNLESS ALL
 SIGNATURES COMPLETED