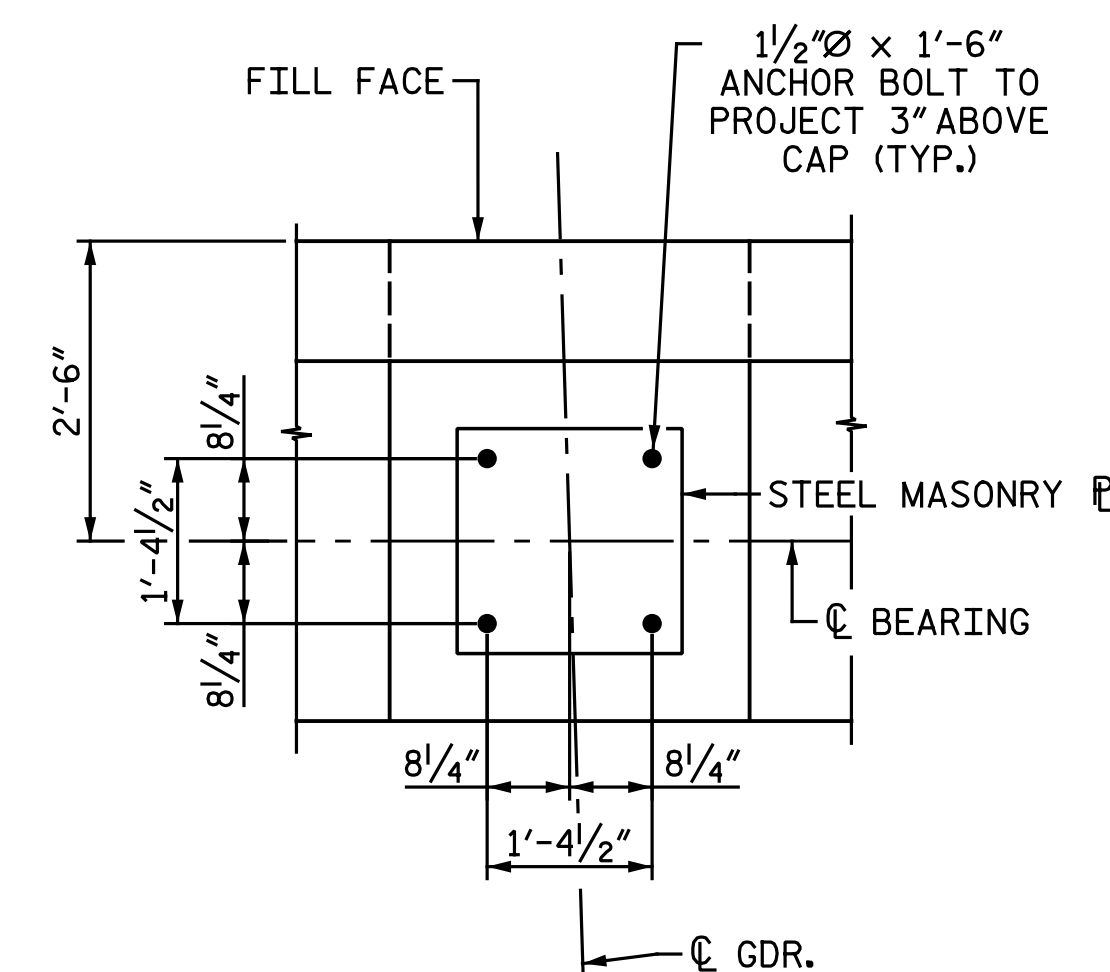
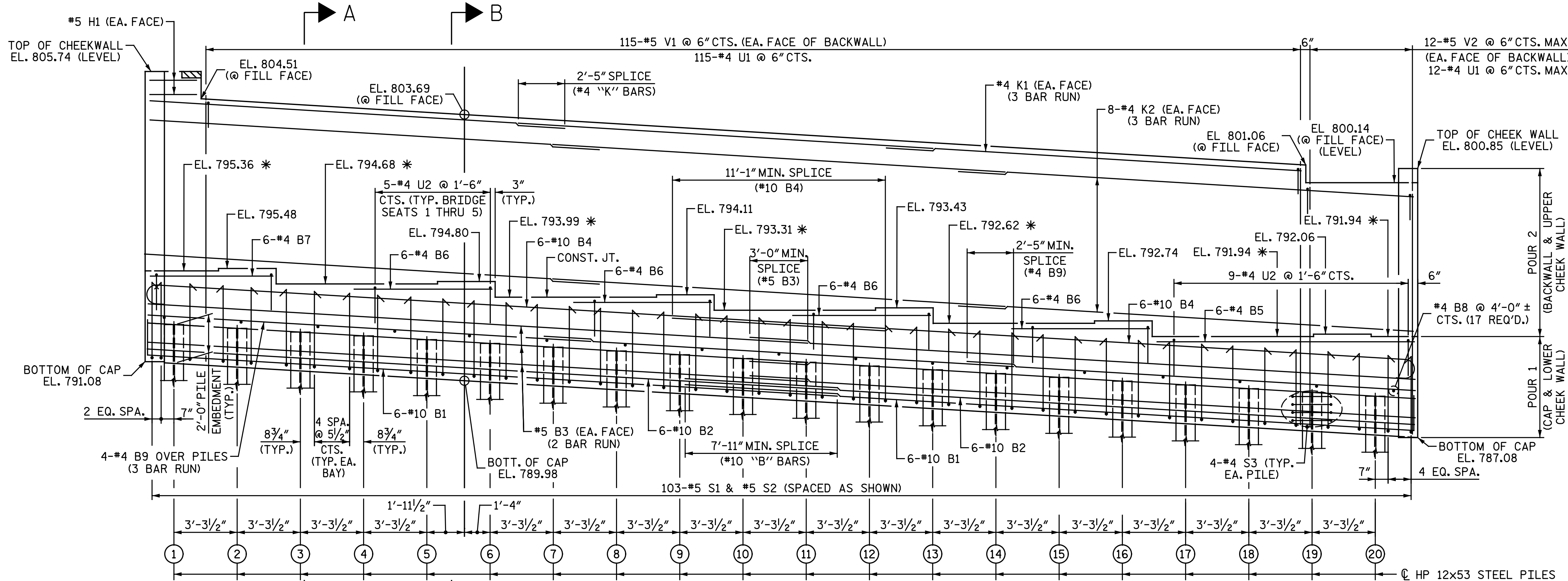


PLAN

NOTES:
 FOR SECTION A-A AND SECTION B-B, SEE "END BENT 2 DETAILS" SHEET.
 FOR ADDITIONAL NOTES, SEE "END BENT 2 DETAILS" SHEET.



DETAIL "A"



ELEVATION

* FOR LOCATION OF ELEVATION BETWEEN BRIDGE SEATS, SEE "END BENT 2 DETAILS" SHEET.

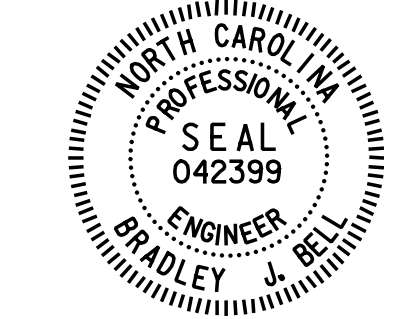
TOP OF PILE ELEVATIONS	
PILE	ELEVATION
1	792.92
2	792.72
3	792.52
4	792.32
5	792.12
6	791.92
7	791.72
8	791.52
9	791.33
10	791.13
11	790.93
12	790.73
13	790.53
14	790.33
15	790.13
16	789.93
17	789.73
18	789.53
19	789.33
20	789.13

PROJECT NO. U-2524D
GUILFORD COUNTY
 STATION: 495+22.00 -LREV-
 SHEET 1 OF 2

nbspecks 7/18/2016 12:23:28 PM
 File name: Y:\Projects\NCDDOT\U-2524D\Site-2\DWG\Right\Final\404_026_U2524D_SML.E201.dgn

DRAWN BY: M. D. MAYHEW DATE: 2-12-16
 CHECKED BY: A. H. SHARPE DATE: 3-24-16

DOCUMENT NOT CONSIDERED FINAL
 UNLESS ALL SIGNATURES COMPLETED



Drawn by: Bradley J. Bell
 7/18/2016

Michael Baker
 INTERNATIONAL
 Michael Baker Engineering
 8000 Regency Parkway, Suite 600
 Cary, North Carolina 27518
 NC License No.: F-1084

STATE OF NORTH CAROLINA DEPARTMENT OF TRANSPORTATION RALEIGH					
SUBSTRUCTURE					
END BENT 2					
RIGHT LANES					
REVISIONS					
NO.	BY:	DATE:	NO.	BY:	DATE:
1			3		
2			4		
					SHEET NO. S4-25
					TOTAL SHEETS 35