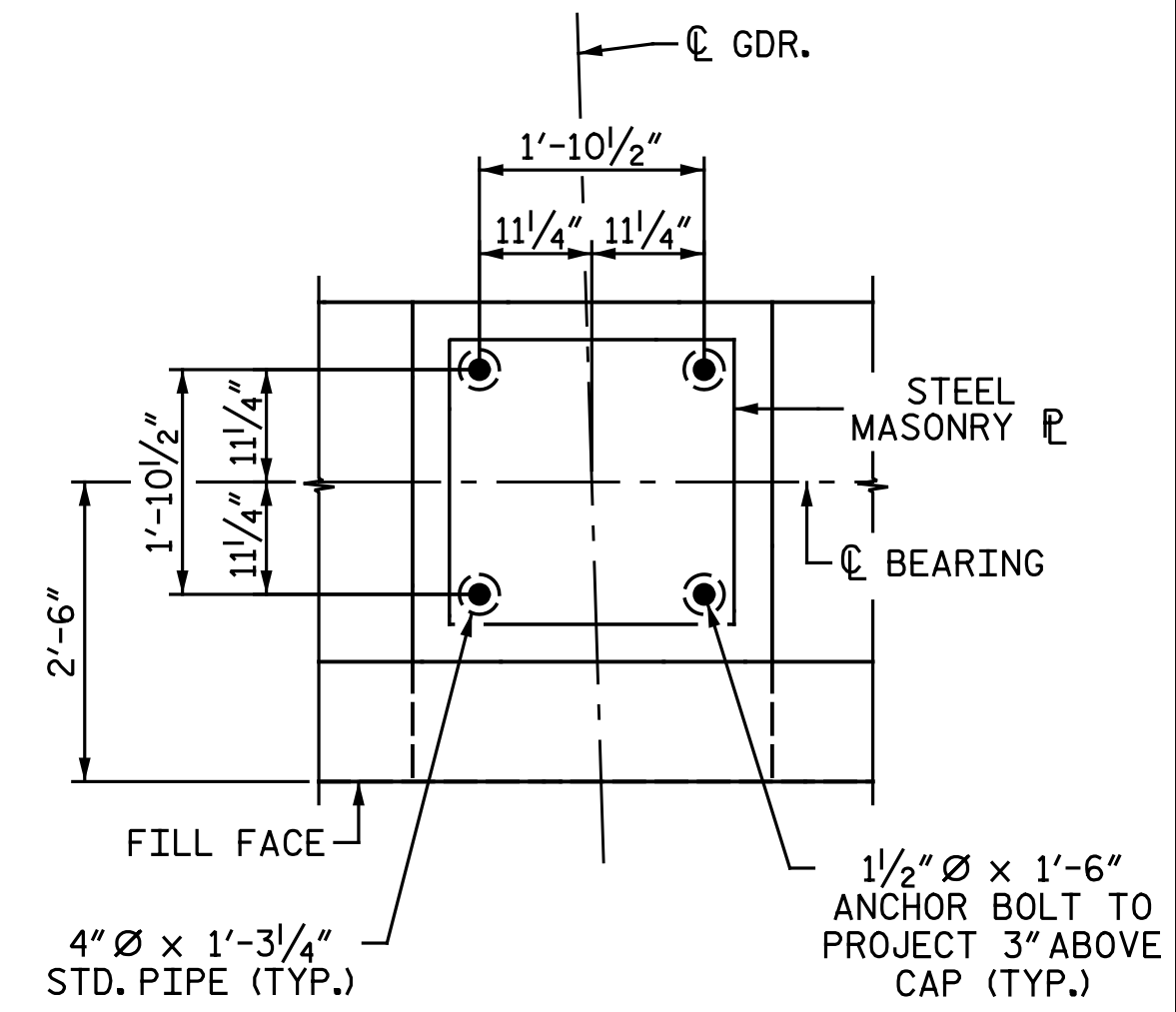
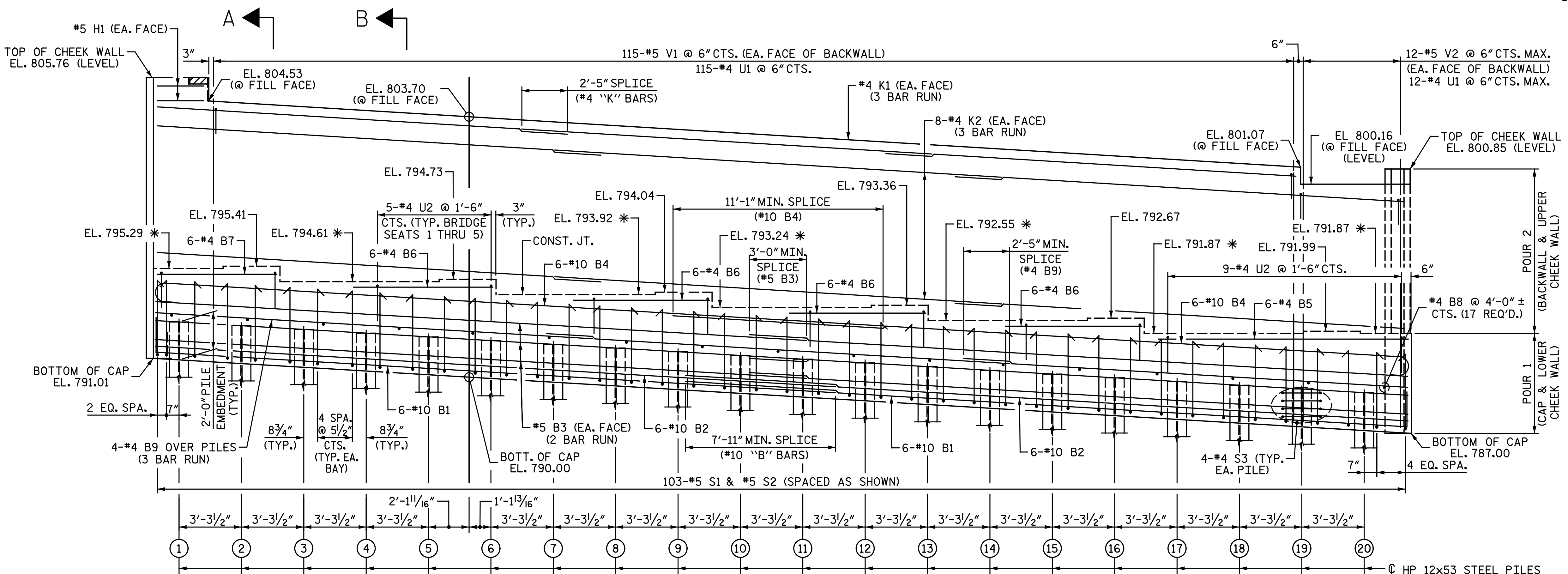


PLAN



DETAIL "A"

NOTES:
 FOR SECTION A-A AND SECTION B-B, SEE "END BENT 1 DETAILS" SHEET.
 FOR ADDITIONAL NOTES, SEE "END BENT 1 DETAILS" SHEET.



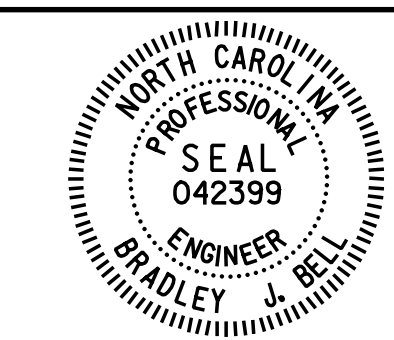
ELEVATION

* FOR LOCATION OF ELEVATION BETWEEN BRIDGE SEATS, SEE "END BENT 1 DETAILS" SHEET.

| TOP OF PILE ELEVATIONS | |
|------------------------|-----------|
| PILE | ELEVATION |
| 1 | 792.92 |
| 2 | 792.72 |
| 3 | 792.52 |
| 4 | 792.32 |
| 5 | 792.12 |
| 6 | 791.92 |
| 7 | 791.72 |
| 8 | 791.52 |
| 9 | 791.32 |
| 10 | 791.12 |
| 11 | 790.92 |
| 12 | 790.72 |
| 13 | 790.53 |
| 14 | 790.33 |
| 15 | 790.13 |
| 16 | 789.93 |
| 17 | 789.73 |
| 18 | 789.53 |
| 19 | 789.33 |
| 20 | 789.13 |

PROJECT NO. U-2524D
GUILFORD COUNTY
 STATION: 495+22.00 -LREV-
 SHEET 1 OF 2

DOCUMENT NOT CONSIDERED FINAL UNLESS ALL SIGNATURES COMPLETED



Drawn by: Bradley J. Bell
 7/18/2016

Michael Baker International
 Michael Baker Engineering
 8000 Regency Parkway, Suite 600
 Cary, North Carolina 27518
 NC License No.: F-1084

STATE OF NORTH CAROLINA
 DEPARTMENT OF TRANSPORTATION
 RALEIGH
 SUBSTRUCTURE
 END BENT 1
 RIGHT LANES

| REVISIONS | | | | | | SHEET NO. S4-22 |
|-----------|-----|-------|-----|-----|-------|--------------------|
| NO. | BY: | DATE: | NO. | BY: | DATE: | |
| 1 | | | 3 | | | TOTAL SHEETS 35 |
| 2 | | | 4 | | | |

nbspecks 7/18/2016 12:23:25 PM
 File name: Y:\Projects\NCDOT\U-2524D\Site-2\DWG\Right\Final\404_023-12524D_SML.E01.dgn

DRAWN BY: M. D. MAYHEW DATE: 2-16-16
 CHECKED BY: A. M. HOUSTON DATE: 3-23-16