

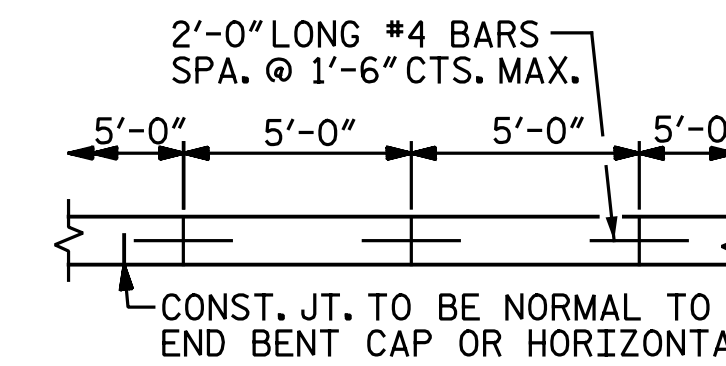
**NOTES:**

SLOPE PROTECTION SHALL BE PLACED UNDER THE ENDS OF THE BRIDGE AS SHOWN IN THE DETAILS. MEASUREMENT AND PAYMENT SHALL BE AS PRESCRIBED IN SECTION 462 OF THE STANDARD SPECIFICATIONS.

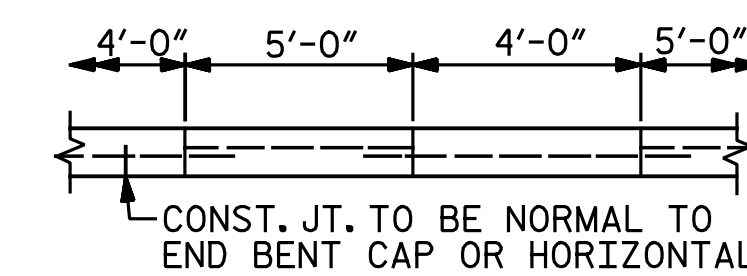
SLOPE PROTECTION SHALL CONSIST OF 4" POURED-IN-PLACE CONCRETE PAVING AS SHOWN IN THE DETAILS ON THIS SHEET. CONCRETE SHALL BE CLASS "B". THE CONCRETE SURFACE SHALL BE FLOATED WITH A WOODEN FLOAT AND FINISHED. WELDED WIRE FABRIC REINFORCING SHALL BE 6 X 6 - W1.4 X W1.4, 60" WIDE. SLOPE PROTECTION SHALL BE POURED IN 5' STRIPS AS SHOWN IN THE "POURING DETAIL" WITH 2'-0" LONG #4 BARS PLACED ALONG THE SLOPE BETWEEN STRIPS AT 1'-6" MAXIMUM SPACING. SLOPE PROTECTION MAY BE POURED IN ALTERNATE 4' AND 5' STRIPS AS SHOWN IN THE "OPTIONAL POURING DETAIL" WITH ADJACENT RUNS OF WELDED WIRE FABRIC LAPPING AT LEAST 6". THE COST OF THE WELDED WIRE FABRIC AND #4 BARS, IF USED, SHALL BE INCLUDED IN THE CONTRACT UNIT PRICE BID PER SQUARE YARD FOR SLOPE PROTECTION.

BRIDGE @ STA. 495+22.00 -LREV- (LEFT LANES)	4 INCH SLOPE PROTECTION	* WELDED WIRE FABRIC 60 INCHES WIDE
	SQUARE YARDS	APPROX. L.F.
END BENT 1	15.5	28
END BENT 2	15.5	28

\* QUANTITY SHOWN IS BASED ON 5' POURS.



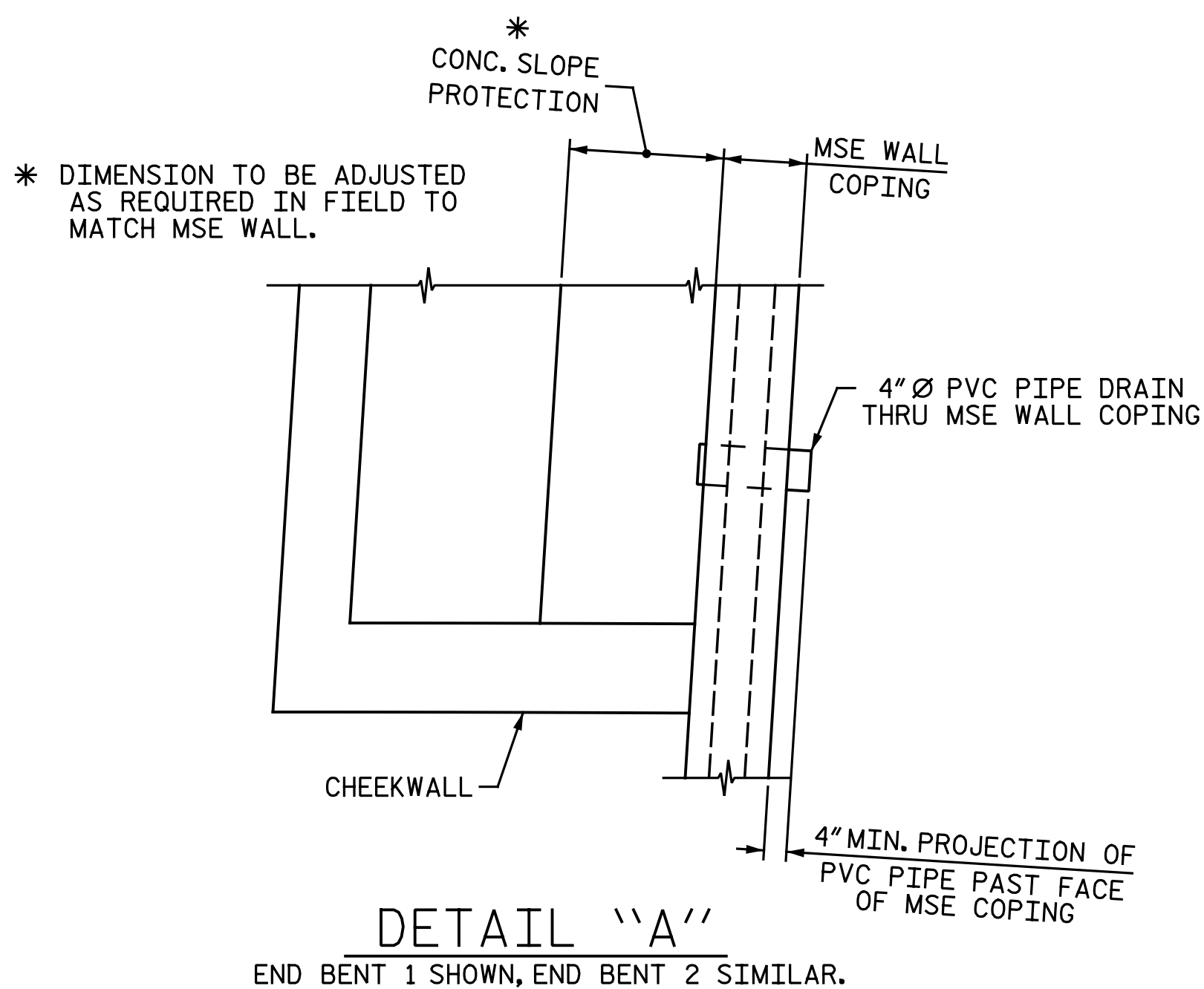
**POURING DETAIL**



POUR A 4'-0" STRIP FIRST.

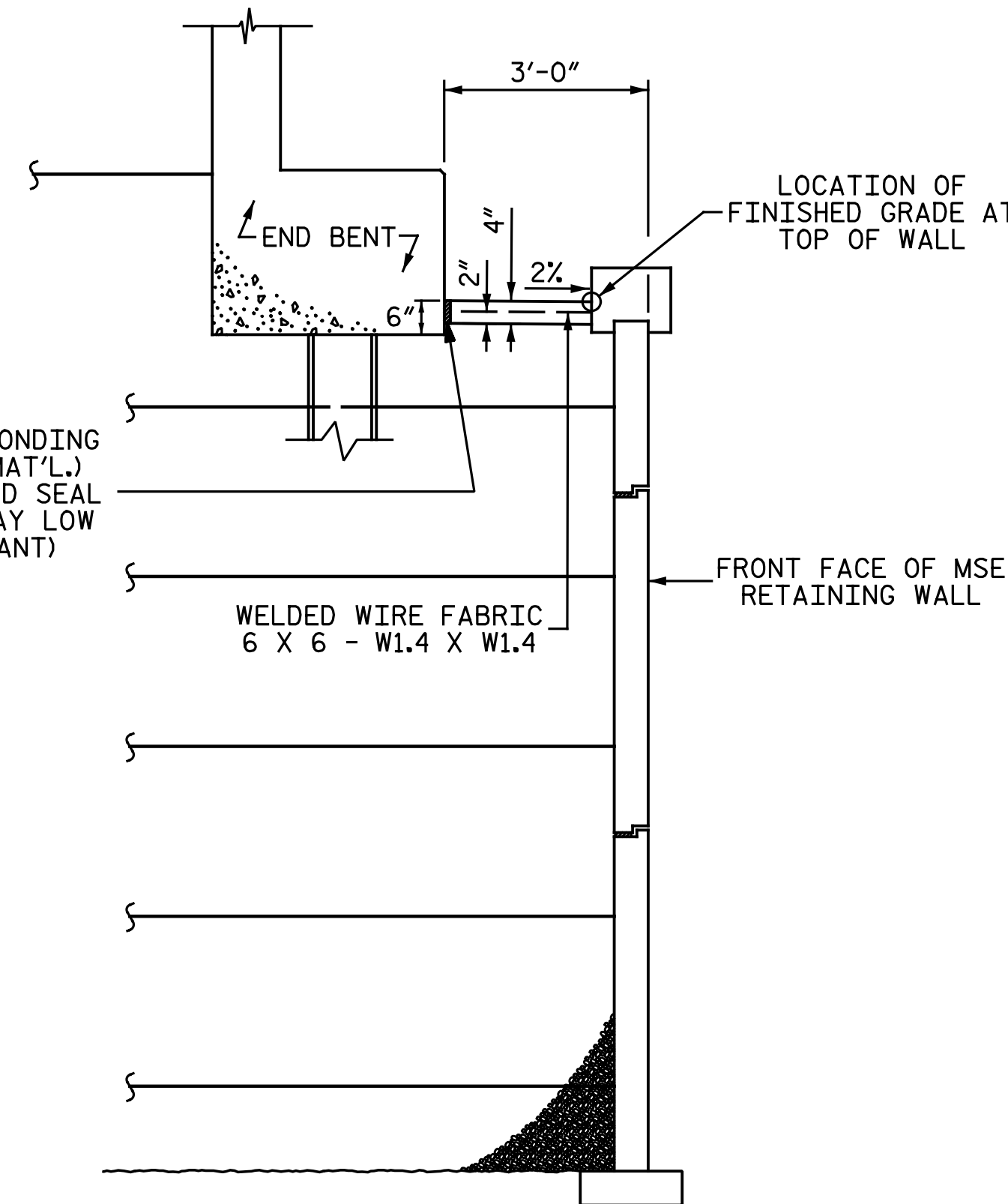
**OPTIONAL POURING DETAIL**

PROJECT NO. U-2524D  
GUILFORD COUNTY  
STATION: 495+22.00 -LREV-



**DETAIL "A"**  
END BENT 1 SHOWN, END BENT 2 SIMILAR.

1" EXP. JT. MAT'L. (PLACE DEBONDING TAPE ON TOP OF EXP. JT. MAT'L.) (KEEP FREE OF CONCRETE AND SEAL WITH JOINT SEALER OR GRAY LOW MODULUS SILICONE SEALANT)



**SECTION B-B**

DOCUMENT NOT CONSIDERED FINAL UNLESS ALL SIGNATURES COMPLETED			STATE OF NORTH CAROLINA DEPARTMENT OF TRANSPORTATION RALEIGH	
	Michael Baker Engineering 8000 Regency Parkway, Suite 600 Cary, North Carolina 27518 NC License No.: F-1084		<b>SLOPE PROTECTION DETAILS</b> LEFT LANES	
	REVISIONS		SHEET NO. <b>S3-28</b>	
NO. 1 BY: [Signature] DATE: 3-24-16		NO. 2 BY: [Signature] DATE: 3-24-16		TOTAL SHEETS 35

DRAWN BY : C. E. MAYHEW DATE : 3-24-16  
CHECKED BY : B. J. BELL DATE : 3-24-16

5/17/2016 5:18:29 PM  
 File Name: Y:\Projects\NCDOT\U-2524D\Site-2\DWG\Left\Final\403.029.U2524D\_SWL.SP.dgn