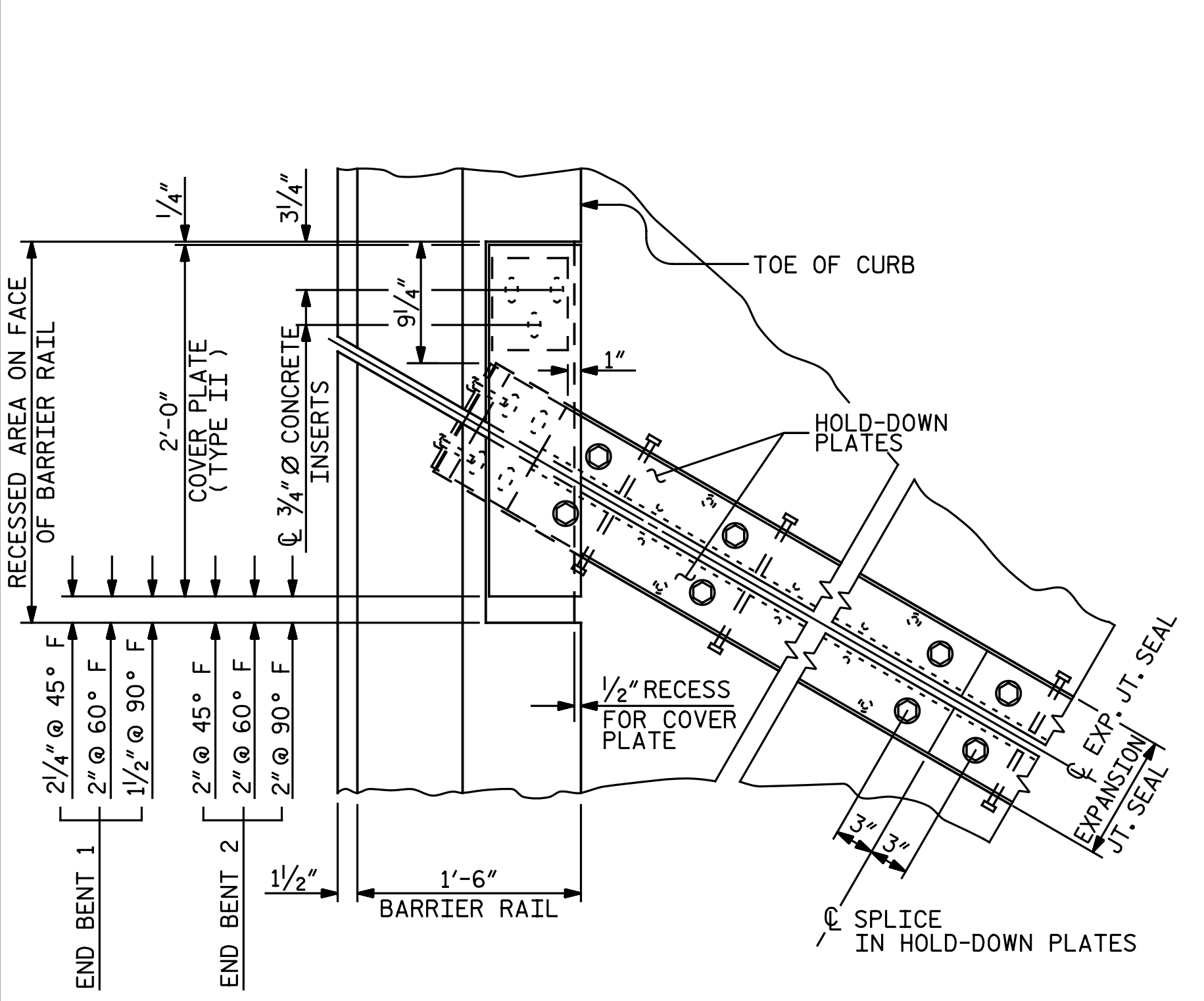
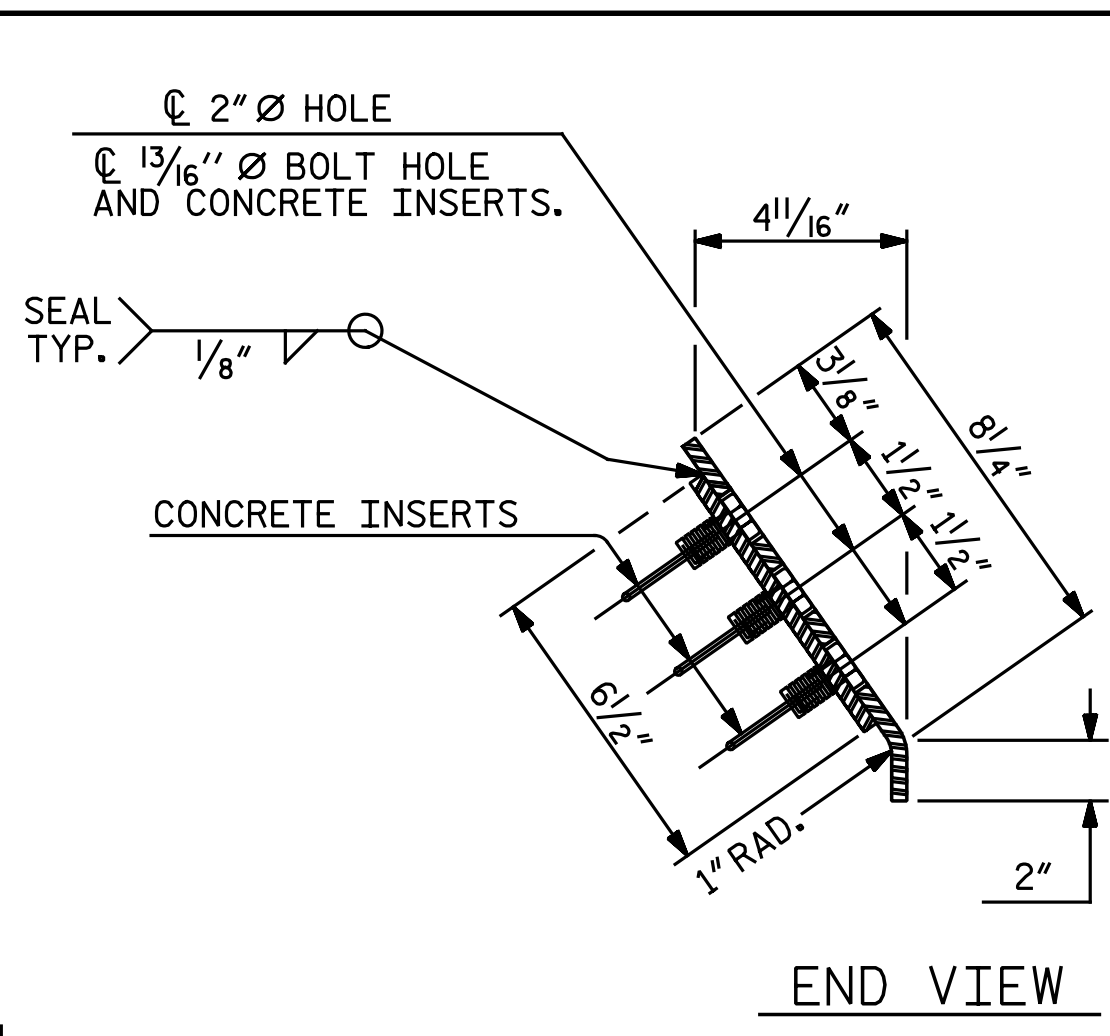


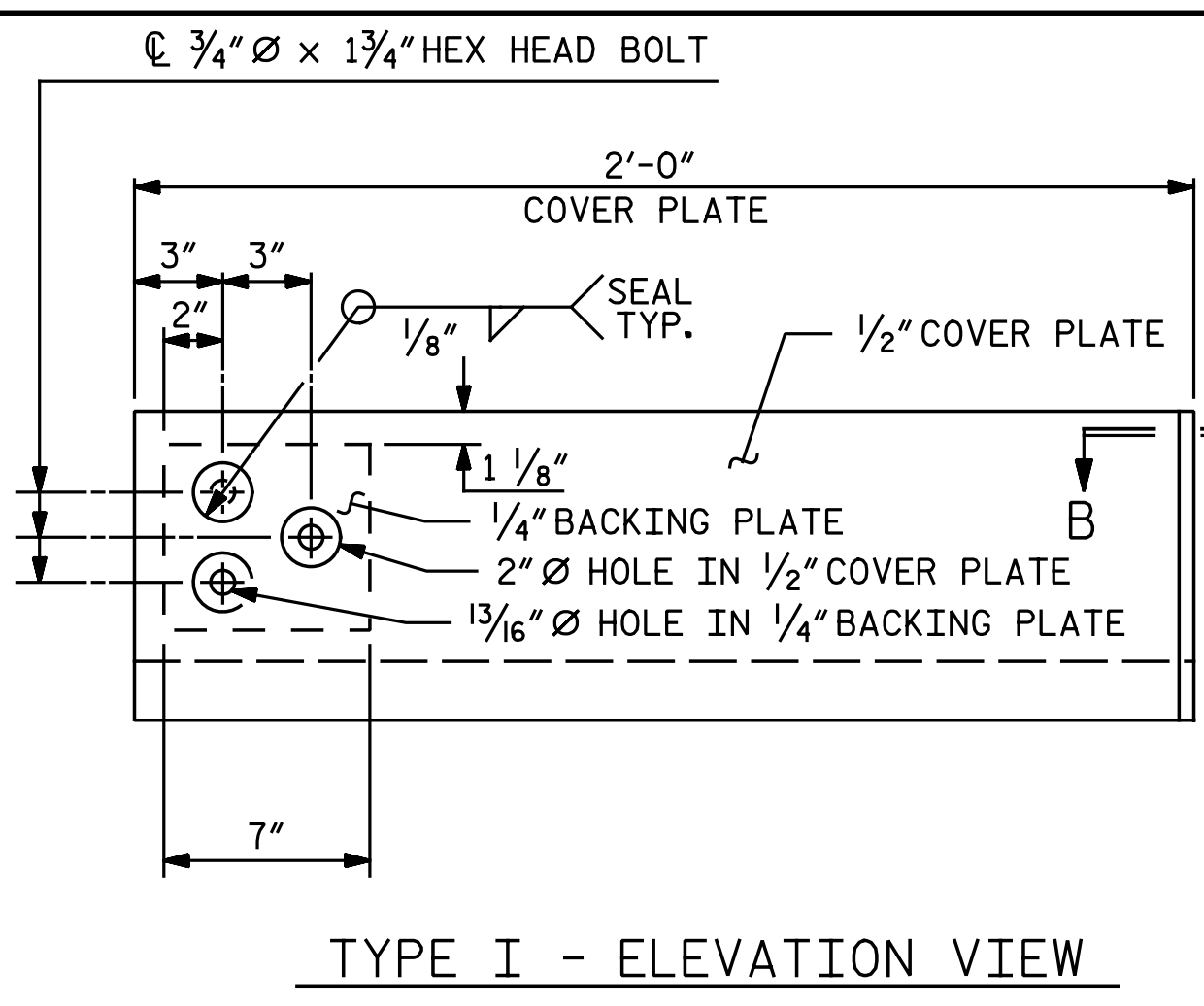
SECTION THRU RAIL NORMAL TO JOINT



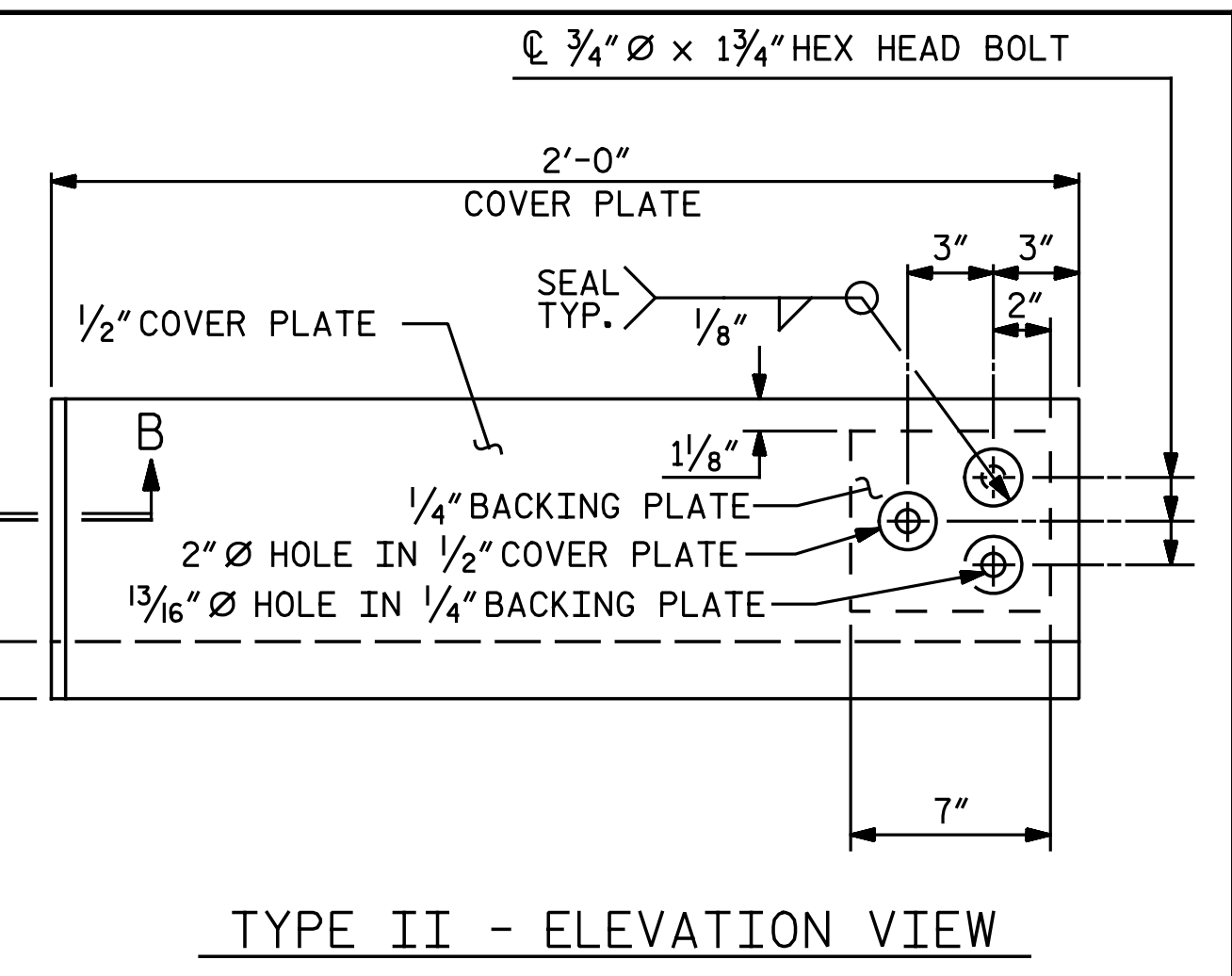
PLAN OF EXPANSION JOINT SEAL



END VIEW

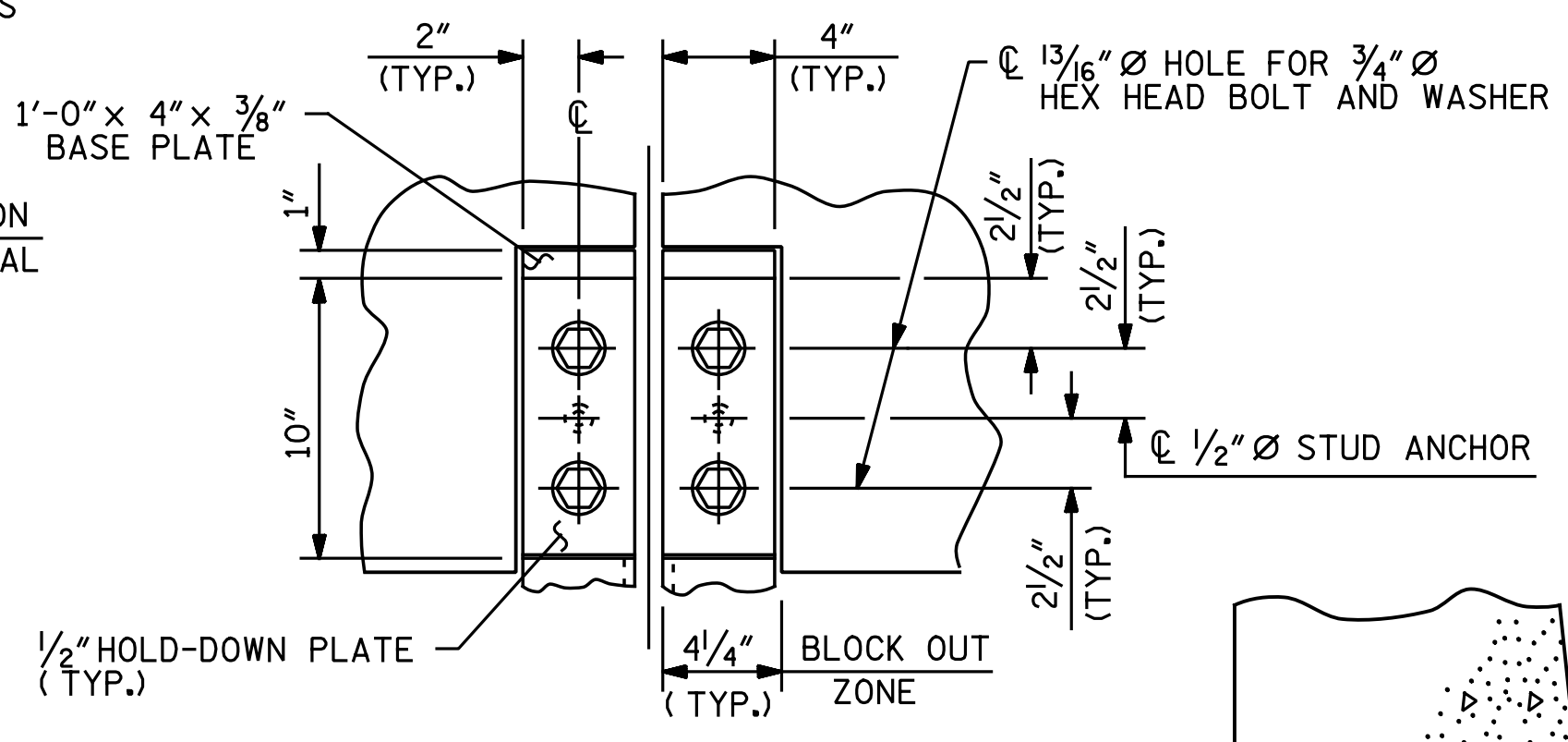


TYPE I - ELEVATION VIEW

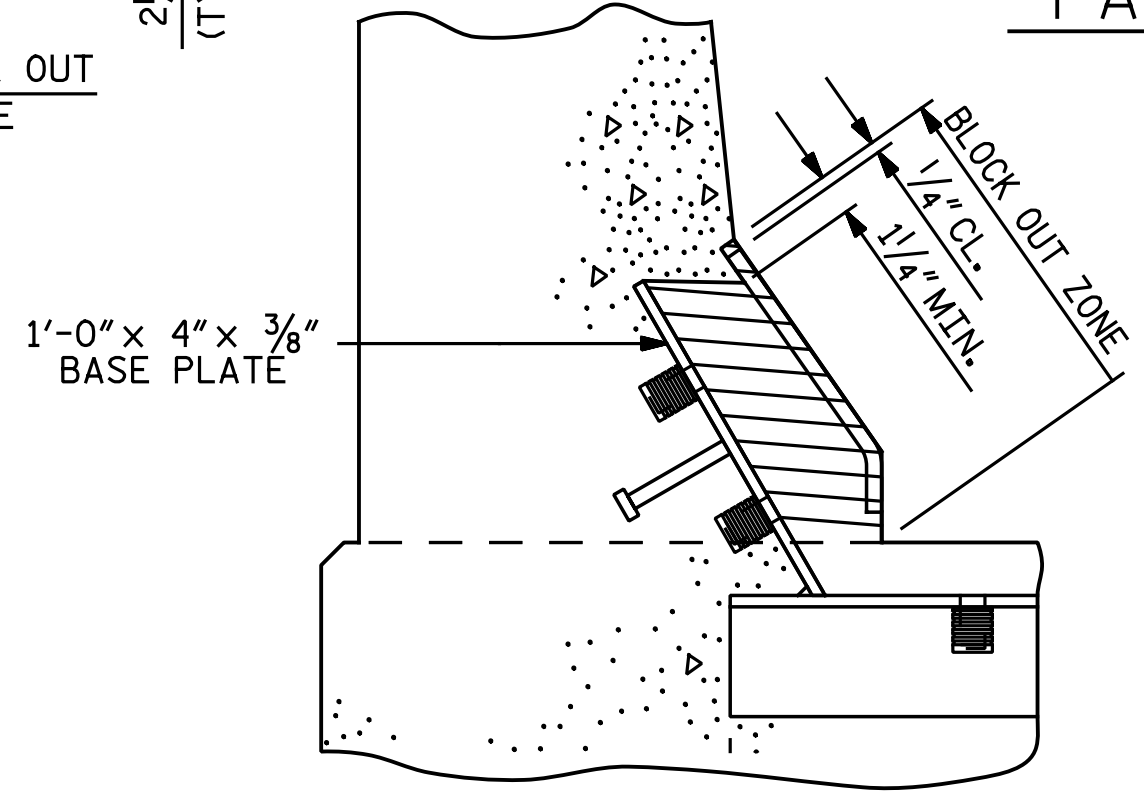


TYPE II - ELEVATION VIEW

COVER PLATE DETAILS

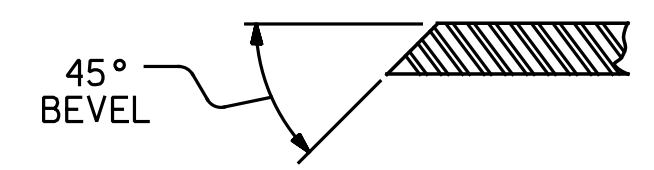


SECTION A-A

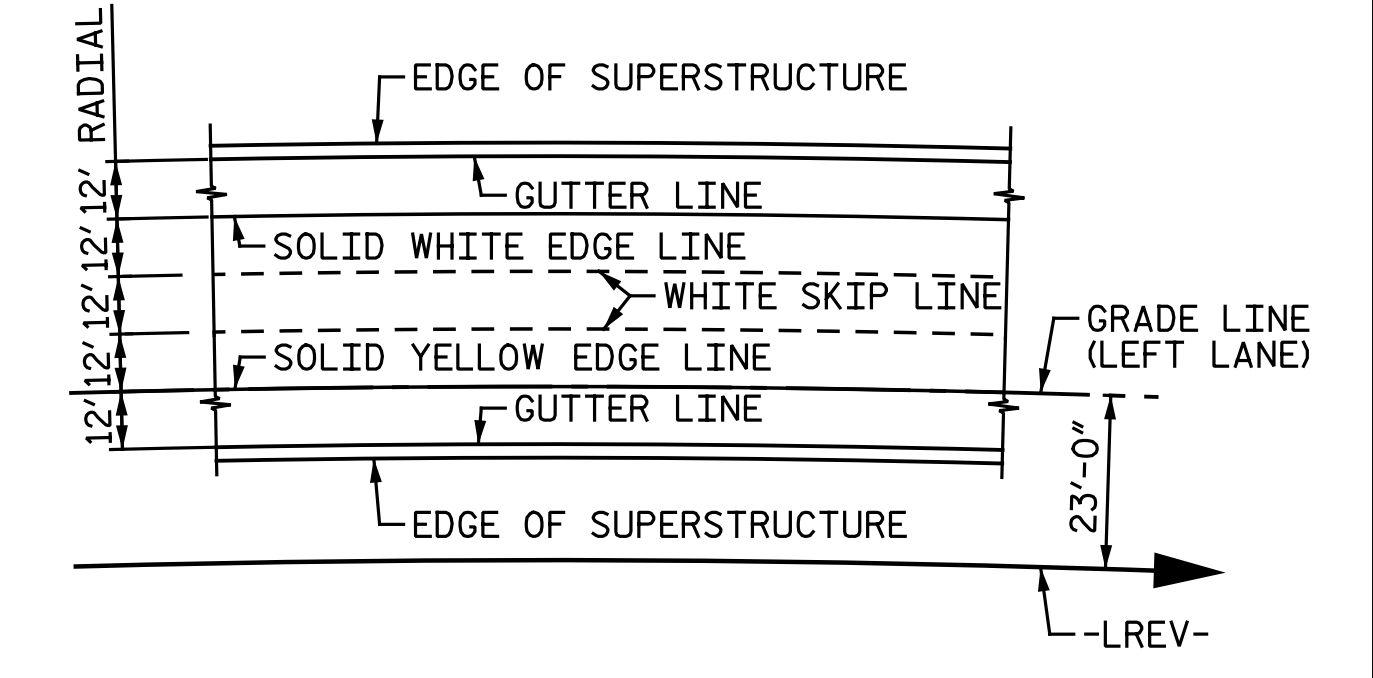


BLOCK OUT DETAIL

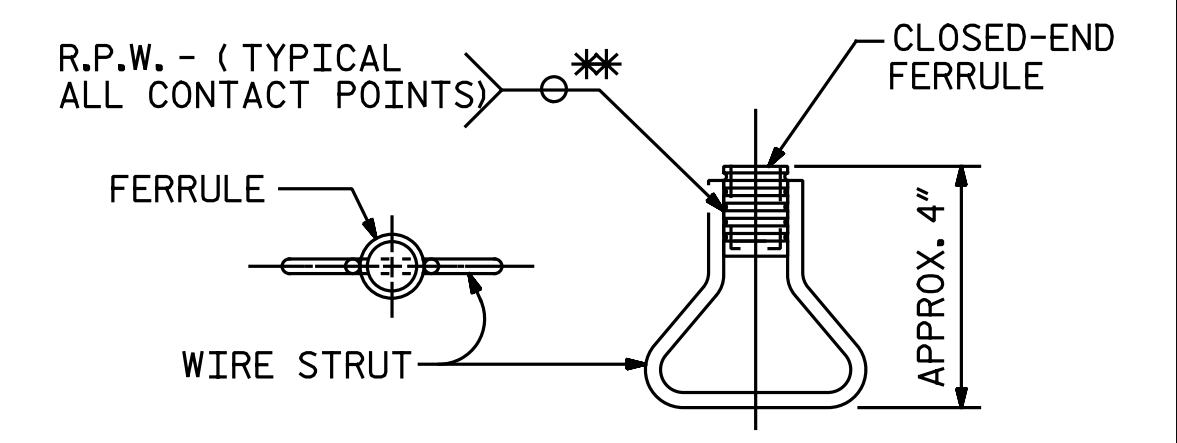
SEE "SECTION A-A" FOR OTHER DETAILS



SECTION B - B



PAVEMENT MARKING ALIGNMENT



CONCRETE INSERT

* EACH WELDED ATTACHMENT OF WIRE TO FERRULE SHALL DEVELOP THE TENSILE STRENGTH OF THE WIRE.

PROJECT NO. U-2524D

GUILFORD COUNTY

STATION: 495+22.00 -LREV-

SHEET 2 OF 2

onayhew 5/17/2016 5:18:24 PM
 File name: Y:\Projects\NCDDOT\U-2524D\Site\2\DWG\Left\Final\403_021_U2524D_SNU_MJ02.dgn

ASSEMBLED BY : M.D.M./N.B.S.	DATE : 2-4-16
CHECKED BY : B.J. BELL	DATE : 3-23-16
DRAWN BY : REK 9/87	REV. 10/1/11
CHECKED BY : CRK 10/87	REV. 7/12
	REV. 6/13
MAA/GM	MAA/GM
MAA/GM	MAA/GM

DOCUMENT NOT CONSIDERED FINAL UNLESS ALL SIGNATURES COMPLETED		STATE OF NORTH CAROLINA DEPARTMENT OF TRANSPORTATION RALEIGH		STANDARD EXPANSION JOINT SEAL DETAILS FOR BARRIER RAIL LEFT LANES	SHEET NO. S3-20
		REVISIONS			
		NO.	BY:	DATE:	
		1			
		2			

Michael Baker
INTERNATIONAL

Michael Baker Engineering
8000 Regency Parkway, Suite 600
Cary, North Carolina 27518
NC License No.: F-1084