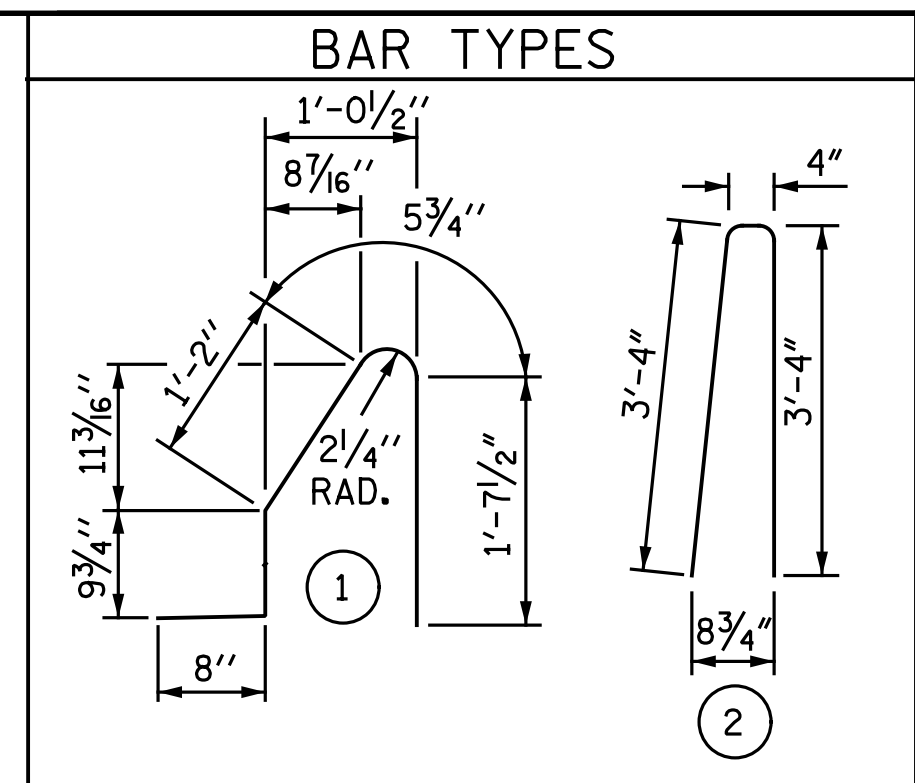


PLAN OF BARRIER RAIL

* ARC LENGTHS MEASURED ALONG OUTSIDE EDGE OF CONCRETE BARRIER RAIL.



ALL BAR DIMENSIONS ARE OUT TO OUT

BILL OF MATERIAL

FOR CONCRETE BARRIER RAIL ONLY

BAR NO.	SIZE	TYPE	LENGTH	WEIGHT	
B1E	132	#5	STR	27'-8"	3,809
B2E	44	#5	STR	28'-7"	1,312
S1E	452	#5	1	4'-9"	2,239
S2E	452	#5	2	7'-0"	3,300

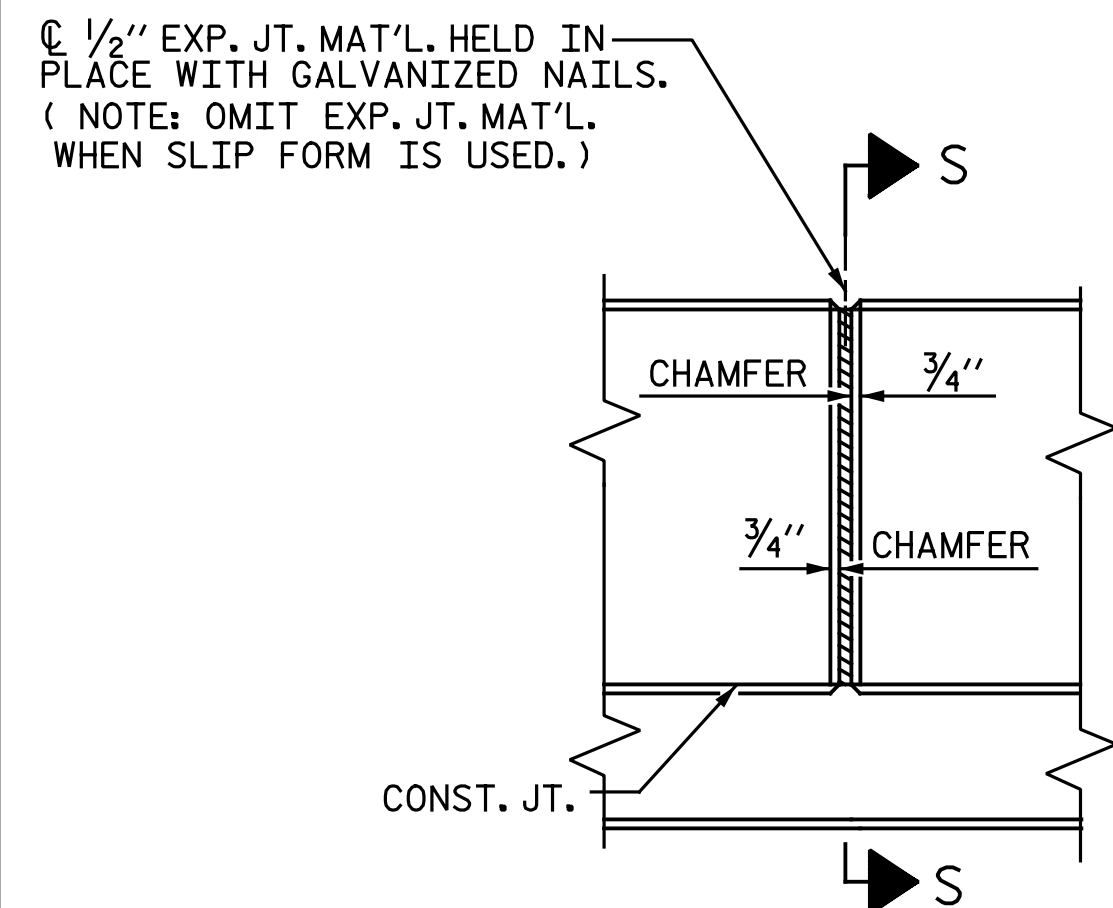
EPOXY COATED REINFORCING STEEL *	10,660	LBS.
CLASS AA CONCRETE *	61.5	CU. YDS.
CONCRETE BARRIER RAIL *	451.7	LIN. FT.

* QUANTITIES DO NOT INCLUDE APPROACH SLAB BARRIER RAILS.

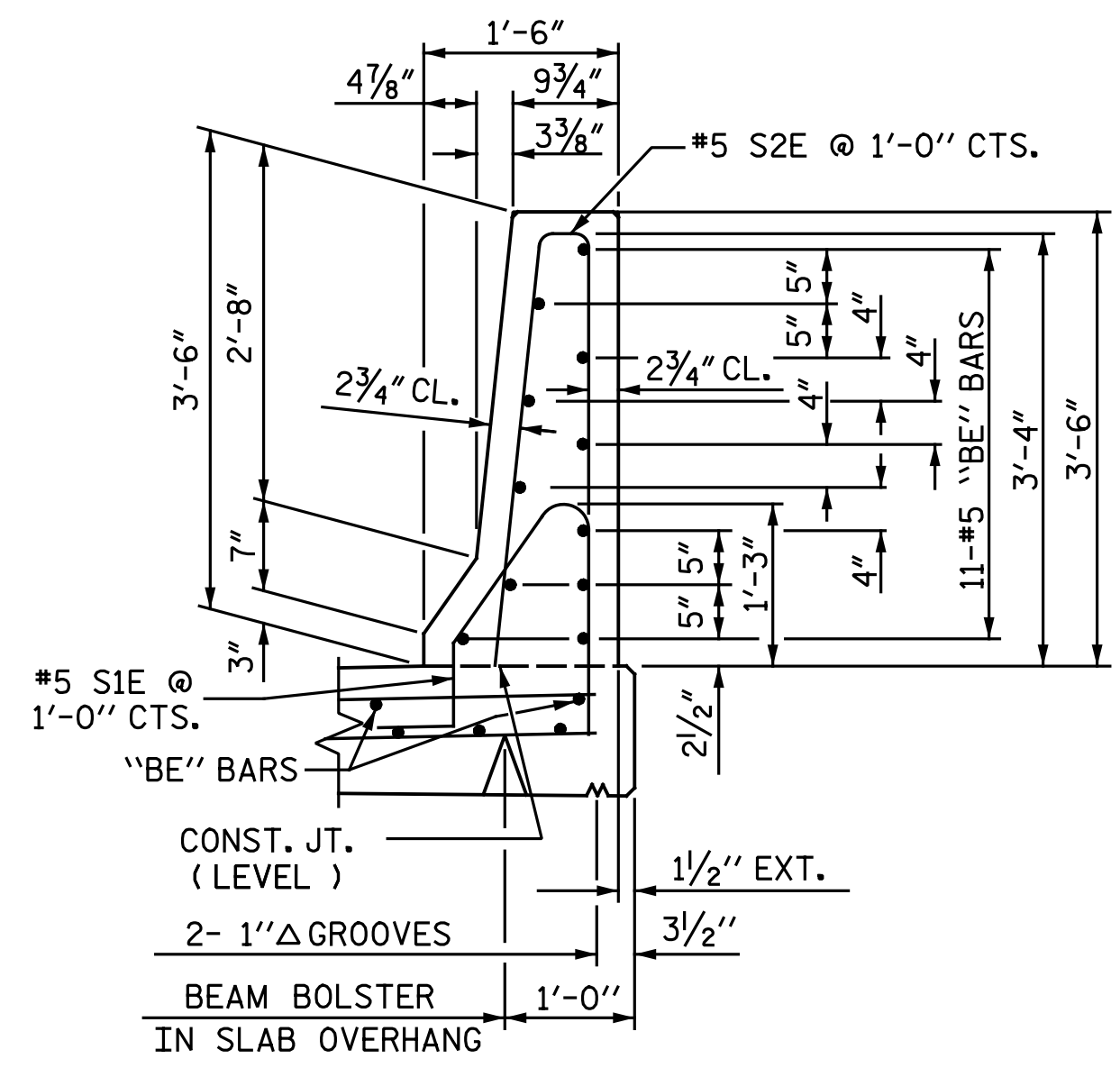
NOTES

- THE BARRIER RAIL IN EACH SPAN SHALL NOT BE CAST UNTIL ALL SLAB CONCRETE IN THAT SPAN HAS BEEN CAST AND HAS REACHED A MINIMUM COMPRESSIVE STRENGTH OF 3,000 PSI.
- WHEN FOAM JOINT SEAL IS REQUIRED, THE JOINT IN THE DECK SHALL BE SAWED PRIOR TO THE CASTING OF BARRIER RAIL.
- ALL REINFORCING STEEL IN BARRIER RAILS SHALL BE EPOXY COATED.
- THE #5 S3, S4, S5 AND S6 BARS SHALL BE INSTALLED, USING AN ADHESIVE ANCHORING SYSTEM, AFTER SAWING THE JOINT. THE YIELD LOAD FOR THE #5 S3, S4, S5 AND S6 BARS IS 18.6 KIPS. FIELD TESTING FOR THE ADHESIVE BONDING SYSTEM IS NOT REQUIRED.
- GROOVED CONTRACTION JOINTS, 1/2" IN DEPTH, SHALL BE TOOLED IN ALL EXPOSED FACES OF THE BARRIER RAIL AND IN ACCORDANCE WITH ARTICLE 825-10(B) OF THE STANDARD SPECIFICATIONS. THE CONTRACTION JOINT SHALL BE LOCATED AT EACH THIRD POINT BETWEEN BARRIER RAIL EXPANSION JOINTS. ONLY ONE CONTRACTION JOINT IS REQUIRED AT MIDPOINT OF BARRIER RAIL SEGMENTS LESS THAN 20 FEET IN LENGTH AND NO CONTRACTION JOINTS ARE REQUIRED FOR THOSE SEGMENTS LESS THAN 10 FEET IN LENGTH.
- FOR BARRIER RAIL CONSTRUCTED ON APPROACH SLABS AND END OF RAIL DETAILS, SEE "BRIDGE APPROACH SLAB DETAILS", SHEETS 2 OF 3 AND 3 OF 3.

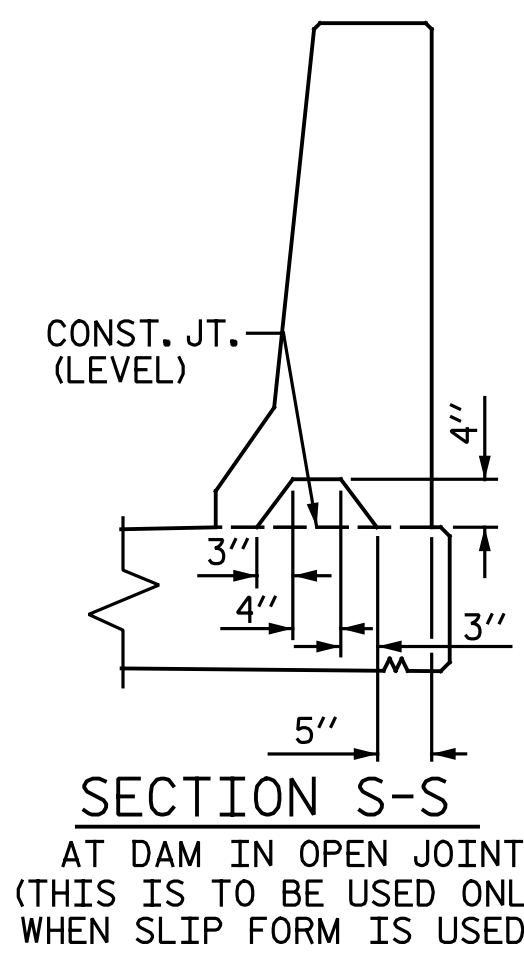
PROJECT NO. U-2524D
GUILFORD COUNTY
 STATION: 495+22.00 -LREV-



ELEVATION AT EXPANSION JOINTS BARRIER RAIL DETAILS



SECTION THRU RAIL



SECTION S-S AT DAM IN OPEN JOINT (THIS IS TO BE USED ONLY WHEN SLIP FORM IS USED)

onayhew 5/17/2016 5:18:22 PM
 File name: Y:\Projects\NCDOT\U-2524D\Site-2\DWG\Left\Final\403.018.U2524D_SML_BR01.dgn

ASSEMBLED BY : N.B. SPEAKS	DATE : 3-2-16
CHECKED BY : B.J. BELL	DATE : 3-10-16
DRAWN BY : ARB 5/87	REV. 10/1/11
CHECKED BY : SJD 9/87	REV. 7/12
	REV. 6/13
	MAA/GM
	MAA/GM
	MAA/GM

DOCUMENT NOT CONSIDERED FINAL UNLESS ALL SIGNATURES COMPLETED		STATE OF NORTH CAROLINA DEPARTMENT OF TRANSPORTATION RALEIGH STANDARD CONCRETE BARRIER RAIL LEFT LANES	
		REVISIONS	
Michael Baker INTERNATIONAL	Michael Baker Engineering 8000 Regency Parkway, Suite 600 Cary, North Carolina 27518 NC License No.: F-1084	NO. 1 BY: ARB DATE: 5/87	NO. 2 BY: SJD DATE: 9/87
		NO. 3 BY: [blank] DATE: [blank]	NO. 4 BY: [blank] DATE: [blank]
		SHEET NO. S3-17 TOTAL SHEETS 35	