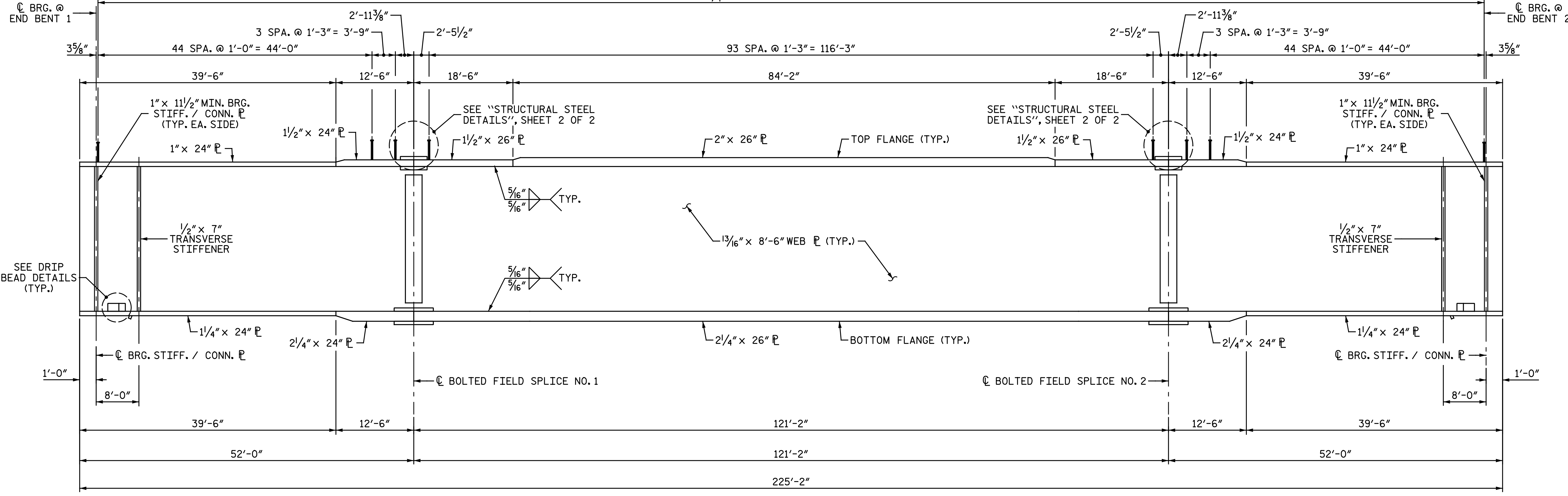
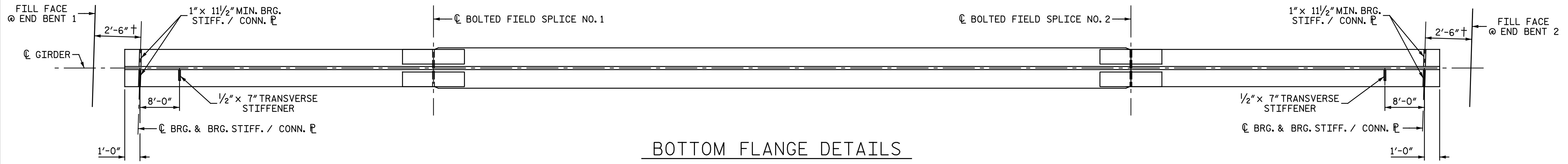


198 ROWS OF 3/4" Ø x 6" SHEAR STUDS (3 STUDS PER ROW)

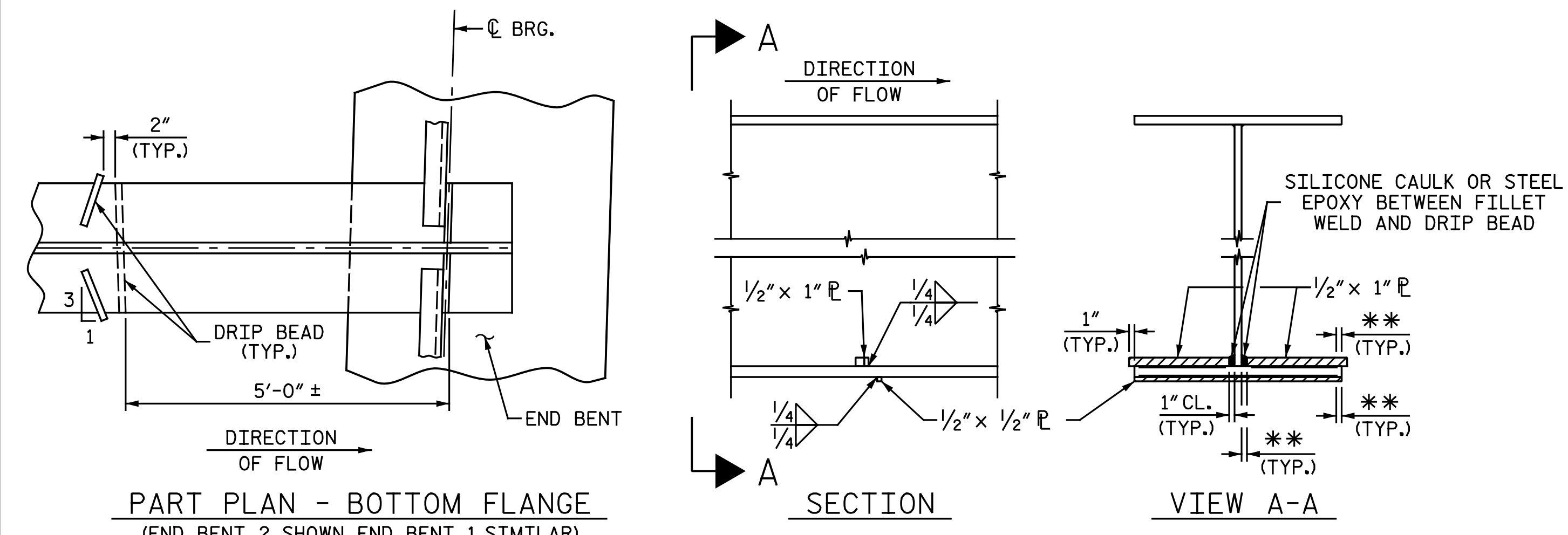


GIRDER ELEVATION



BOTTOM FLANGE DETAILS

† MEASURED PERPENDICULAR TO END BENT FILL FACE



DRIP BEAD DETAILS

** SEE "STRUCTURAL STEEL DETAILS", SHEET 1 OF 2

PROJECT NO. U-2524D
 GUILFORD COUNTY
 STATION: 495+22.00 -LREV-

NOTES:

TRANSVERSE STIFFENERS ARE TO BE PLACED ON ONE SIDE OF THE GIRDER ONLY. TRANSVERSE STIFFENERS ARE NOT TO BE PLACED ON OUTSIDE OF EXTERIOR GIRDER.

A CHARPY V-NOTCH TEST IS REQUIRED FOR WEB PLATES, BOTTOM FLANGE PLATES, BOTTOM FLANGE SPLICE PLATES AND WEB SPLICE PLATES FOR ALL GIRDERS IN ACCORDANCE WITH ARTICLE 1072-7 OF THE STANDARD SPECIFICATIONS.

DIMENSIONS ARE HORIZONTAL DIMENSIONS ALONG THE CENTERLINE OF GIRDER. NO CORRECTIONS HAVE BEEN MADE TO ADJUST FOR THE DISTANCE ALONG THE GRADE.

FOR SHEAR CONNECTOR TRANSVERSE SPACING, SEE "STRUCTURAL STEEL DETAILS", SHEET 1 OF 2.

DOCUMENT NOT CONSIDERED FINAL UNLESS ALL SIGNATURES COMPLETED

Professional Engineer Seal for Bradley J. Bell, License No. 042399, State of North Carolina. Date: 5/17/2016.

Michael Baker International
 8000 Regency Parkway, Suite 600
 Cary, North Carolina 27518
 NC License No.: F-1084

STATE OF NORTH CAROLINA DEPARTMENT OF TRANSPORTATION RALEIGH SUPERSTRUCTURE GIRDER DETAILS LEFT LANES					
REVISIONS					
NO.	BY:	DATE:	NO.	BY:	DATE:
1			3		
2			4		
SHEET NO. S3-10					TOTAL SHEETS 35

5/17/2016 5:18:18 PM
 File Name: Y:\Projects\NCDOT\U-2524D\Site-2\DWG\Left\Final\403.011.02524D_SML.G.dgn