

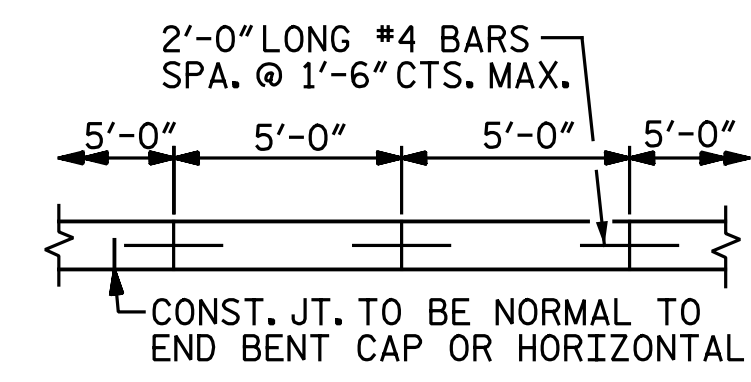
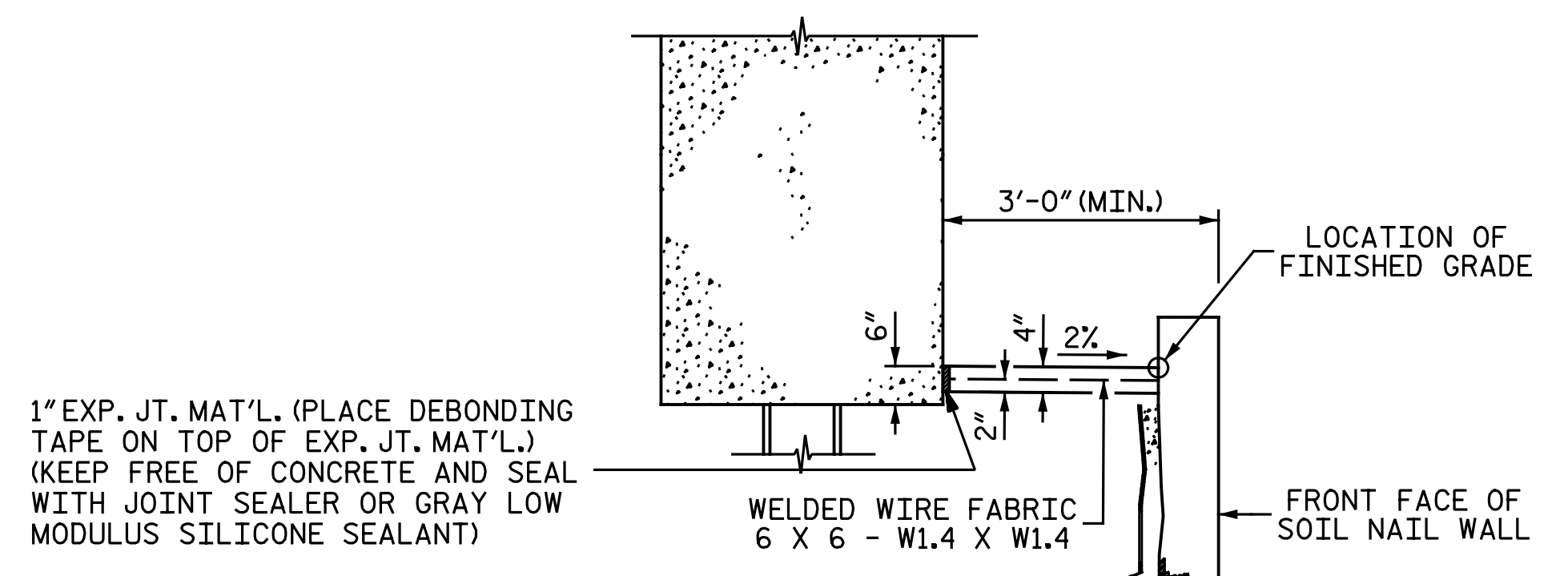
**NOTES:**

SLOPE PROTECTION SHALL BE PLACED UNDER THE ENDS OF THE BRIDGE AS SHOWN IN THE DETAILS. STRAIGHT EDGING WILL NOT BE REQUIRED UNLESS, IN THE OPINION OF THE ENGINEER, VISUAL INSPECTION INDICATES A NEED FOR IT. MEASUREMENT AND PAYMENT SHALL BE AS PRESCRIBED IN SECTION 462 OF THE STANDARD SPECIFICATIONS. FOR BERM WIDTH, SEE GENERAL DRAWING.

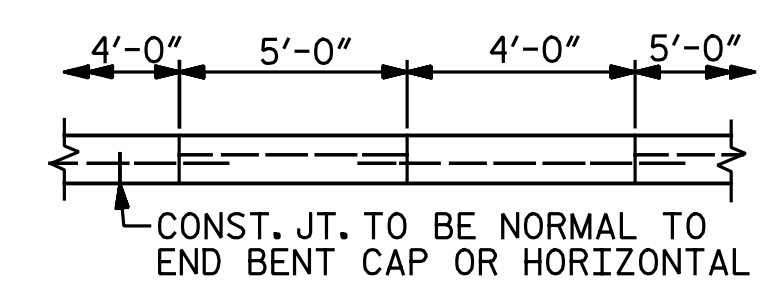
SLOPE PROTECTION SHALL CONSIST OF 4" POURED-IN-PLACE CONCRETE PAVING AS SHOWN IN THE DETAILS ON THIS SHEET. CONCRETE SHALL BE CLASS "B". THE CONCRETE SURFACE SHALL BE FLOATED WITH A WOODEN FLOAT AND FINISHED. WELDED WIRE FABRIC REINFORCING SHALL BE 6 X 6 - W1.4 X W1.4, 60" WIDE. SLOPE PROTECTION SHALL BE POURED IN 5' STRIPS AS SHOWN IN THE "POURING DETAIL" WITH 2'-0" LONG #4 BARS PLACED ALONG THE SLOPE BETWEEN STRIPS AT 1'-6" MAXIMUM SPACING. SLOPE PROTECTION MAY BE POURED IN ALTERNATE 4' AND 5' STRIPS AS SHOWN IN THE "OPTIONAL POURING DETAIL" WITH ADJACENT RUNS OF WELDED WIRE FABRIC LAPPING AT LEAST 6". THE COST OF THE WELDED WIRE FABRIC AND #4 BARS, IF USED, SHALL BE INCLUDED IN THE CONTRACT UNIT PRICE BID PER SQUARE YARD FOR SLOPE PROTECTION.

BRIDGE @ STA. 13+62.84 -PED-	4" INCH SLOPE PROTECTION	* WELDED WIRE FABRIC 60 INCHES WIDE
	SQUARE YARDS	APPROX. L.F.
END BENT 1	7.0	11
END BENT 2	7.0	11

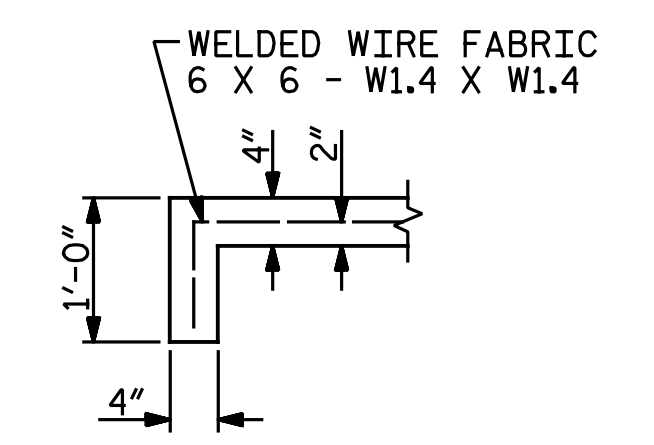
\* QUANTITY SHOWN IS BASED ON 5' POURS.



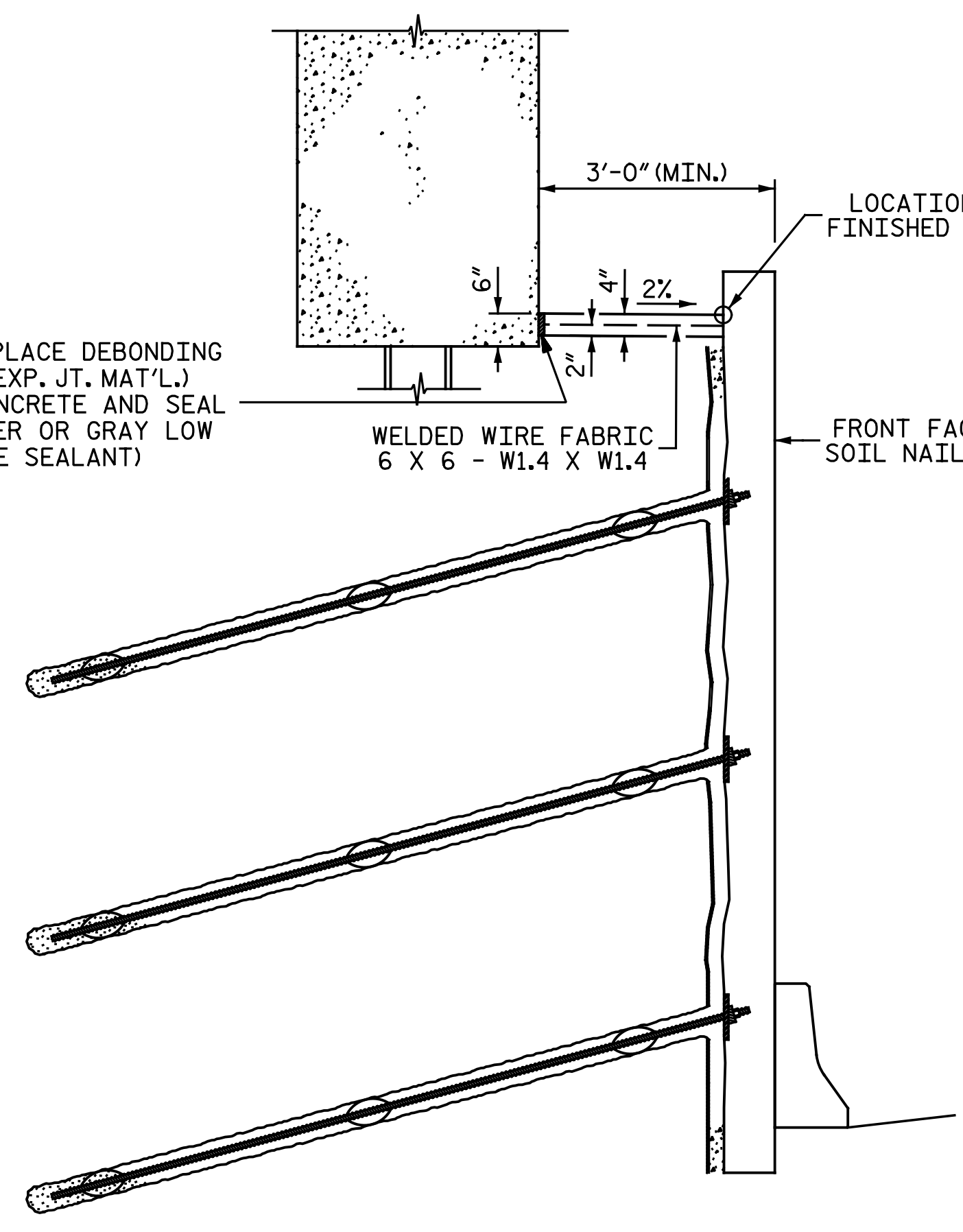
POURING DETAIL



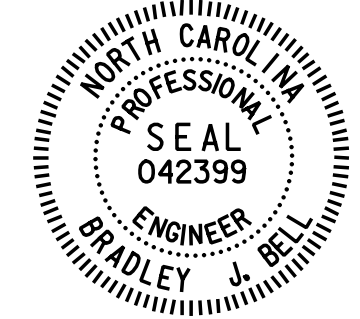
OPTIONAL POURING DETAIL



SECTION A-A



PROJECT NO. U-2524D  
GUILFORD COUNTY  
 STATION: 13+62.84 -PED-

DOCUMENT NOT CONSIDERED FINAL UNLESS ALL SIGNATURES COMPLETED	 DocuSigned by: Bradley J. Bell C41A3F8E3C3A34... 5/5/2016		STATE OF NORTH CAROLINA DEPARTMENT OF TRANSPORTATION RALEIGH		SHEET NO. <b>S2-33</b> TOTAL SHEETS 33	
	<b>SLOPE PROTECTION DETAILS</b>					
	REVISIONS					
	NO.	BY:	DATE:	NO.	BY:	DATE:
	1			3		
	2			4		

DRAWN BY : M. D. MAYHEW DATE : 3-4-16  
 CHECKED BY : A. M. HOUSTON DATE : 3-7-16

cmayhew 12:03:31 PM 5/5/2016  
 File name: Y:\Projects\NCDOT\U-2524D\Site\1.DWG\Final\402.034.U2524D\_SML.SP.dgn