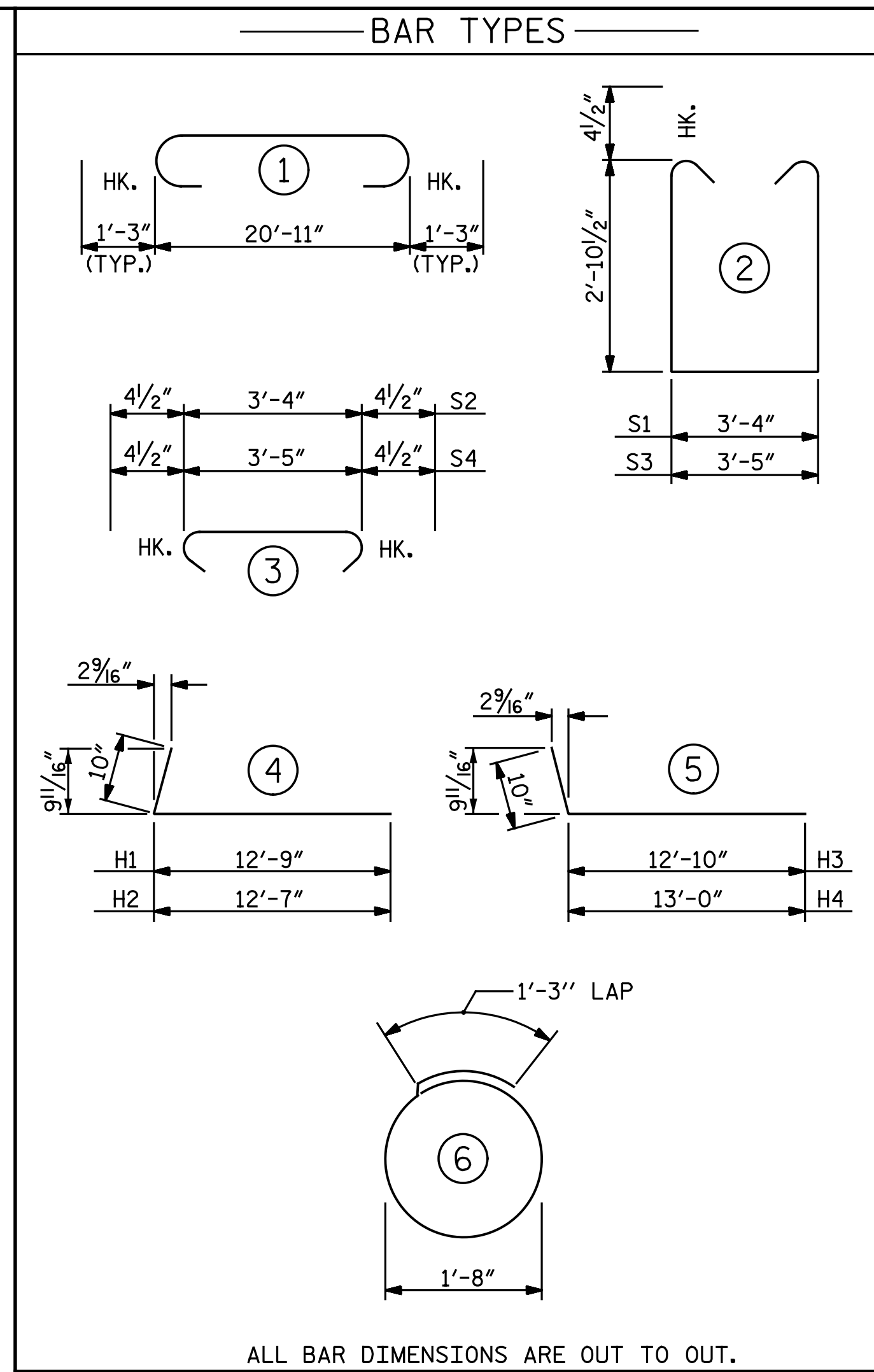
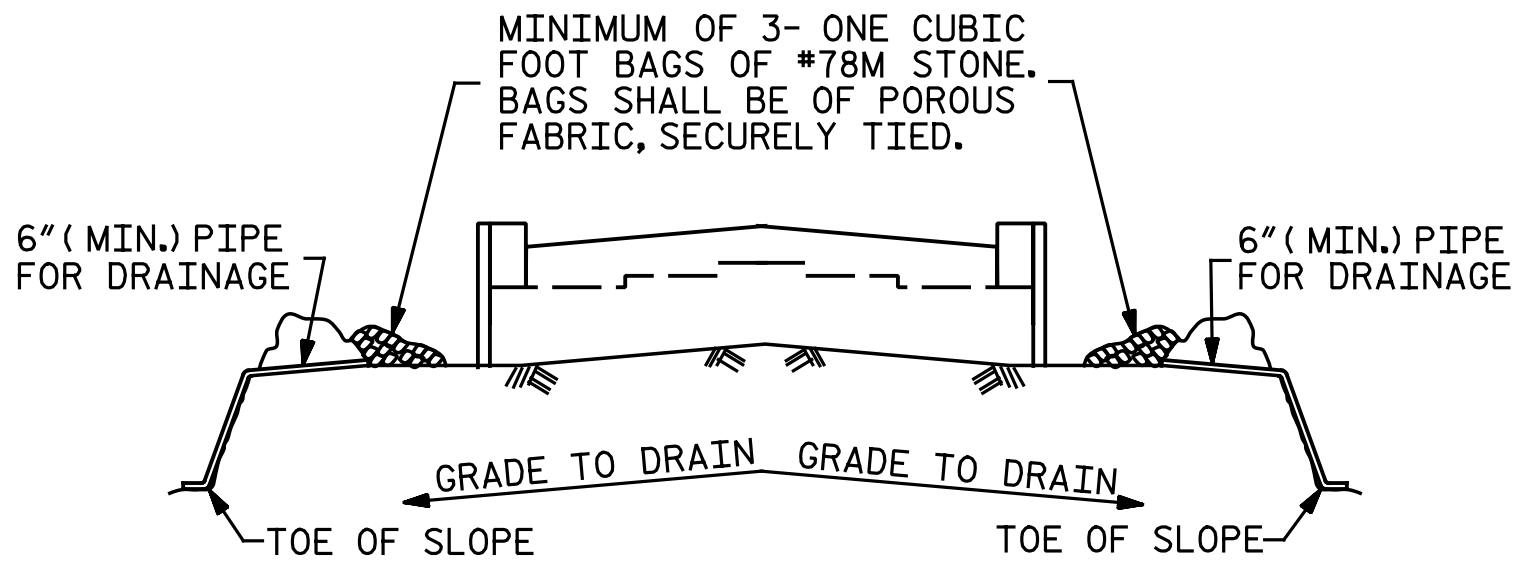


SECTION A-A



ALL BAR DIMENSIONS ARE OUT TO OUT.

| BILL OF MATERIAL | | | | | |
|------------------------|-----|------|------|-----------|--------|
| END BENT 2 | | | | | |
| BAR | NO. | SIZE | TYPE | LENGTH | WEIGHT |
| B1 | 8 | 9 | 1 | 23' - 5" | 637 |
| B2 | 4 | 5 | STR | 20' - 11" | 87 |
| B3 | 4 | 4 | STR | 20' - 11" | 56 |
| B4 | 6 | 4 | STR | 3' - 4" | 13 |
| H1 | 5 | 5 | 4 | 13' - 7" | 71 |
| H2 | 5 | 5 | 4 | 13' - 5" | 70 |
| H3 | 5 | 5 | 5 | 13' - 8" | 71 |
| H4 | 5 | 5 | 5 | 13' - 10" | 72 |
| S1 | 23 | 4 | 2 | 9' - 10" | 151 |
| S2 | 23 | 4 | 3 | 4' - 1" | 63 |
| S3 | 2 | 4 | 2 | 9' - 11" | 13 |
| S4 | 2 | 4 | 3 | 4' - 2" | 6 |
| S5 | 16 | 4 | 6 | 6' - 6" | 69 |
| V1 | 82 | 4 | STR | 4' - 10" | 265 |
| REINFORCING STEEL | | | | LBS. | 1,644 |
| CLASS A CONCRETE | | | | C.Y. | 11.9 |
| HP 12 x 53 STEEL PILES | | | | L.F. | 220 |
| NO. 4 | | | | | |

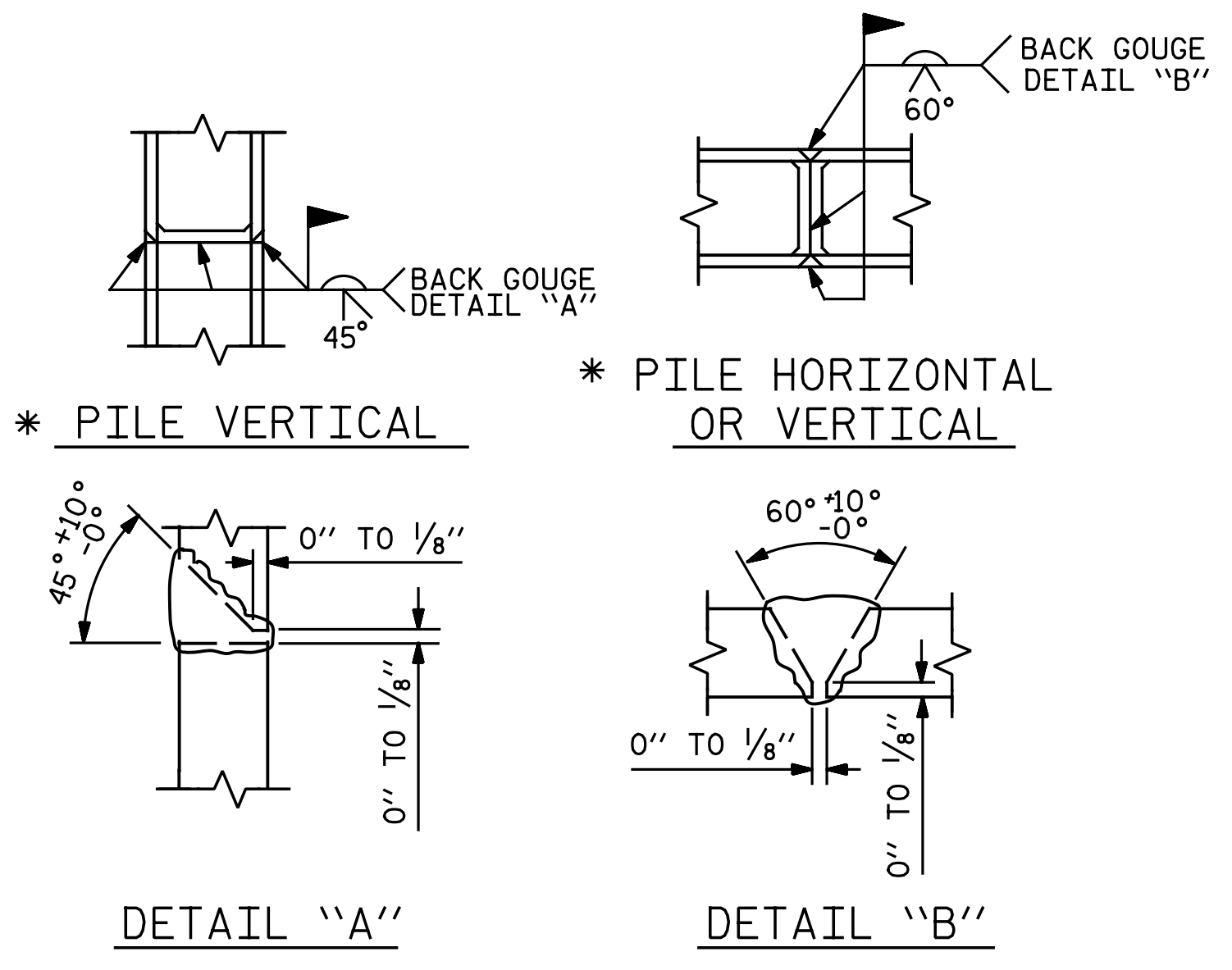


BAGGED STONE AND PIPE SHALL BE PLACED IMMEDIATELY AFTER COMPLETION OF END BENT EXCAVATION. PIPE MAY BE EITHER CONCRETE, CORRUGATED STEEL, CORRUGATED ALUMINUM ALLOY, OR CORRUGATED PLASTIC. PERFORATED PIPE WILL NOT BE ALLOWED.

BAGGED STONE SHALL REMAIN IN PLACE UNTIL THE ENGINEER DIRECTS THAT IT BE REMOVED. THE CONTRACTOR SHALL REMOVE AND DISPOSE OF SILT ACCUMULATIONS AT BAGGED STONE WHEN SO DIRECTED BY THE ENGINEER. BAGS SHALL BE REMOVED AND REPLACED WHENEVER THE ENGINEER DETERMINES THAT THEY HAVE DETERIORATED AND LOST THEIR EFFECTIVENESS.

NO SEPARATE PAYMENT WILL BE MADE FOR THIS WORK AND THE ENTIRE COST OF THIS WORK SHALL BE INCLUDED IN THE UNIT CONTRACT PRICE BID FOR THE SEVERAL PAY ITEMS.

TEMPORARY DRAINAGE AT END BENT



PILE SPLICE DETAILS

* POSITION OF PILE DURING WELDING.

PROJECT NO. U-2524D
 GUILFORD COUNTY
 STATION: 13+62.84 -PED-

DOCUMENT NOT CONSIDERED FINAL UNLESS ALL SIGNATURES COMPLETED

DocuSigned by:
 Bradley J. Bell
 C41A5F8E3C3A34...
 5/5/2016

Michael Baker International
 Michael Baker Engineering
 8000 Regency Parkway, Suite 600
 Cary, North Carolina 27518
 NC License No.: F-1084

| REVISIONS | | | | | |
|-----------|-----|-------|-----|-----|-------|
| NO. | BY: | DATE: | NO. | BY: | DATE: |
| 1 | | | 3 | | |
| 2 | | | 4 | | |

| | |
|-----------------|----|
| SHEET NO. S2-32 | |
| TOTAL SHEETS | 33 |

DRAWN BY : J. N. AUSTIN DATE : 12-1-15
 CHECKED BY : A. M. HOUSTON DATE : 3-7-16

cmayhew 5/5/2016 12:03:31 PM
 File Name: Y:\Projects\NCDOT\U-2524D\Sheet\1.DWG\Final\402.033.U2524D_SML.E203.dgn