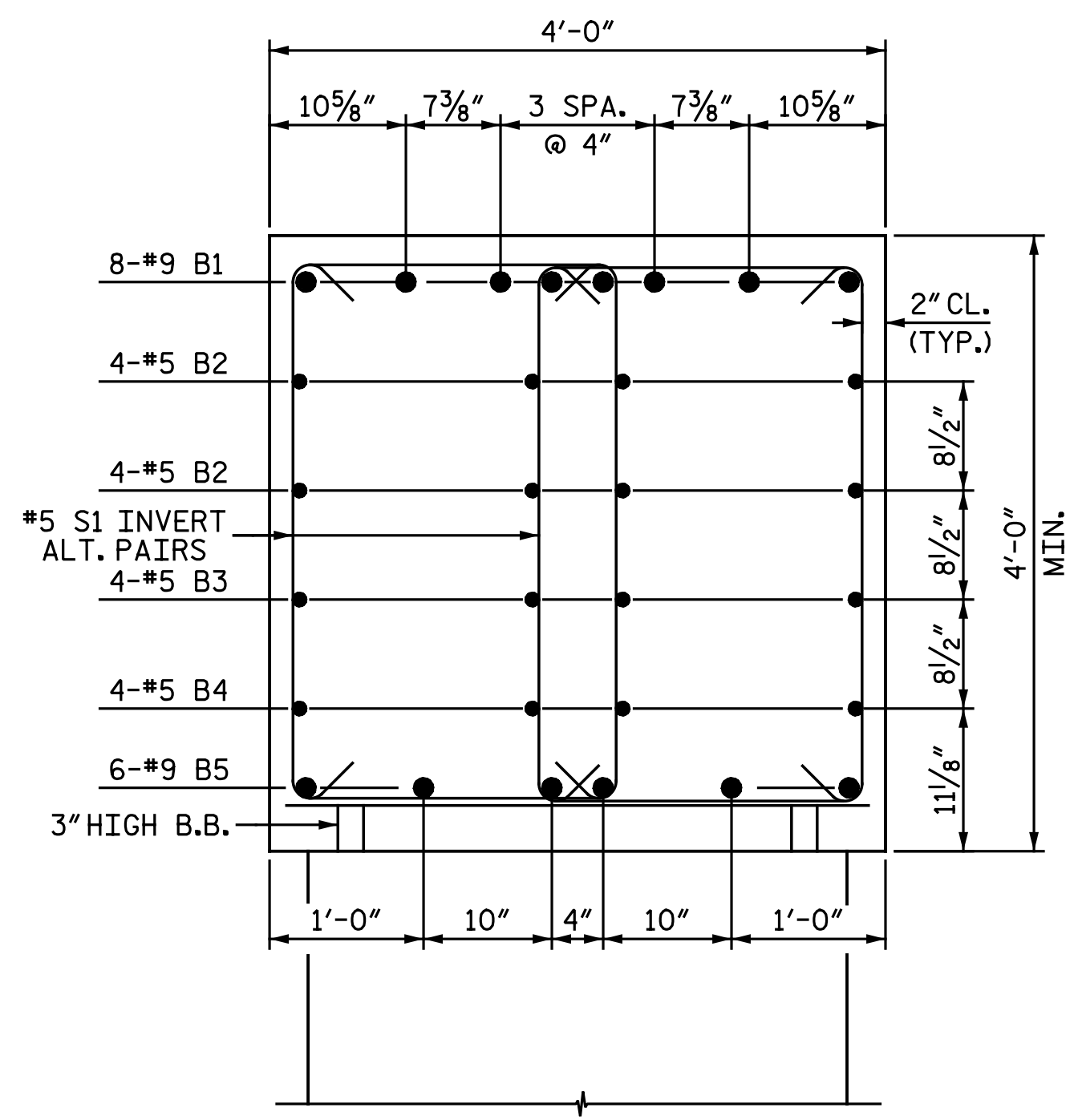
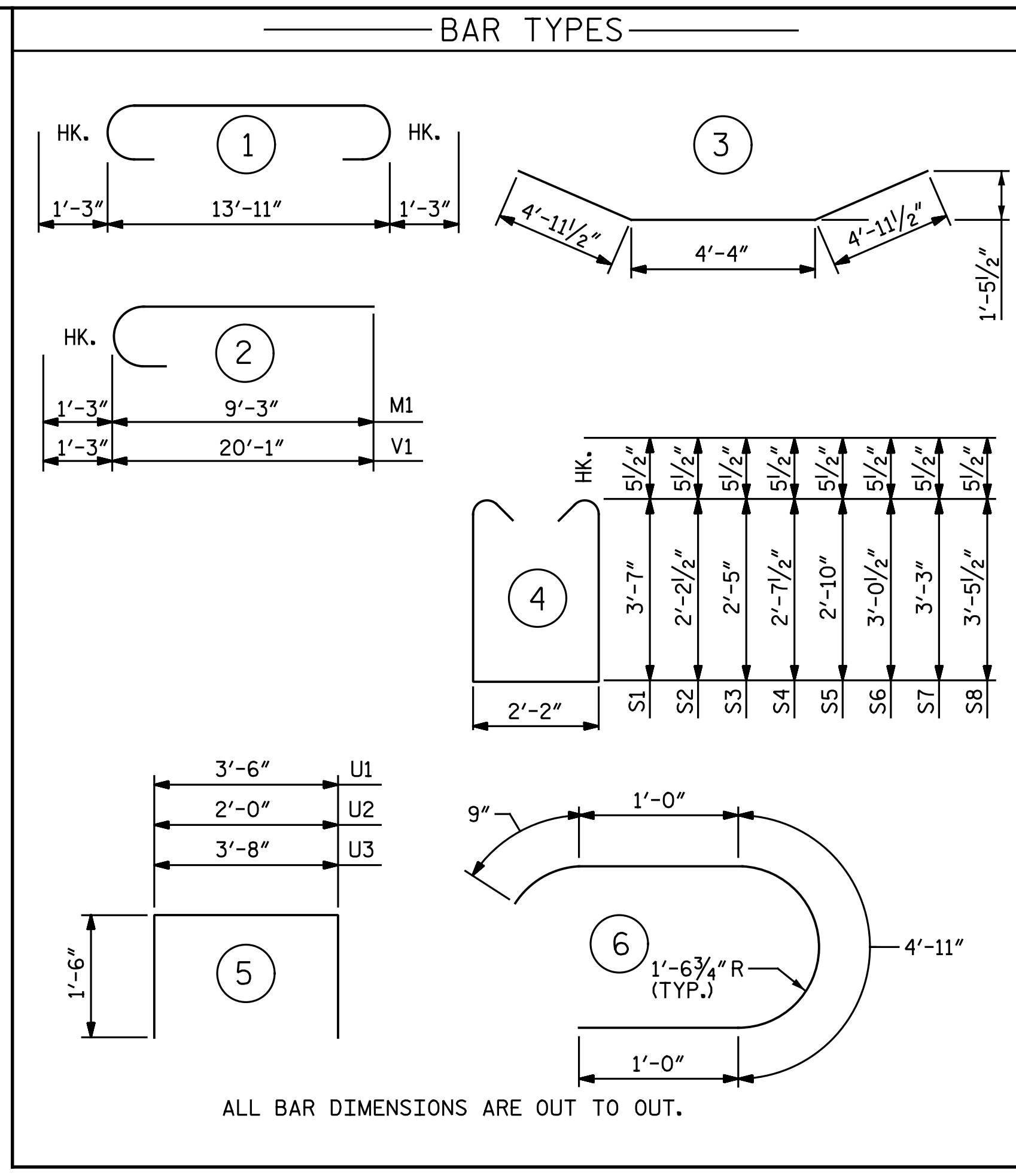


FOOTING PLAN



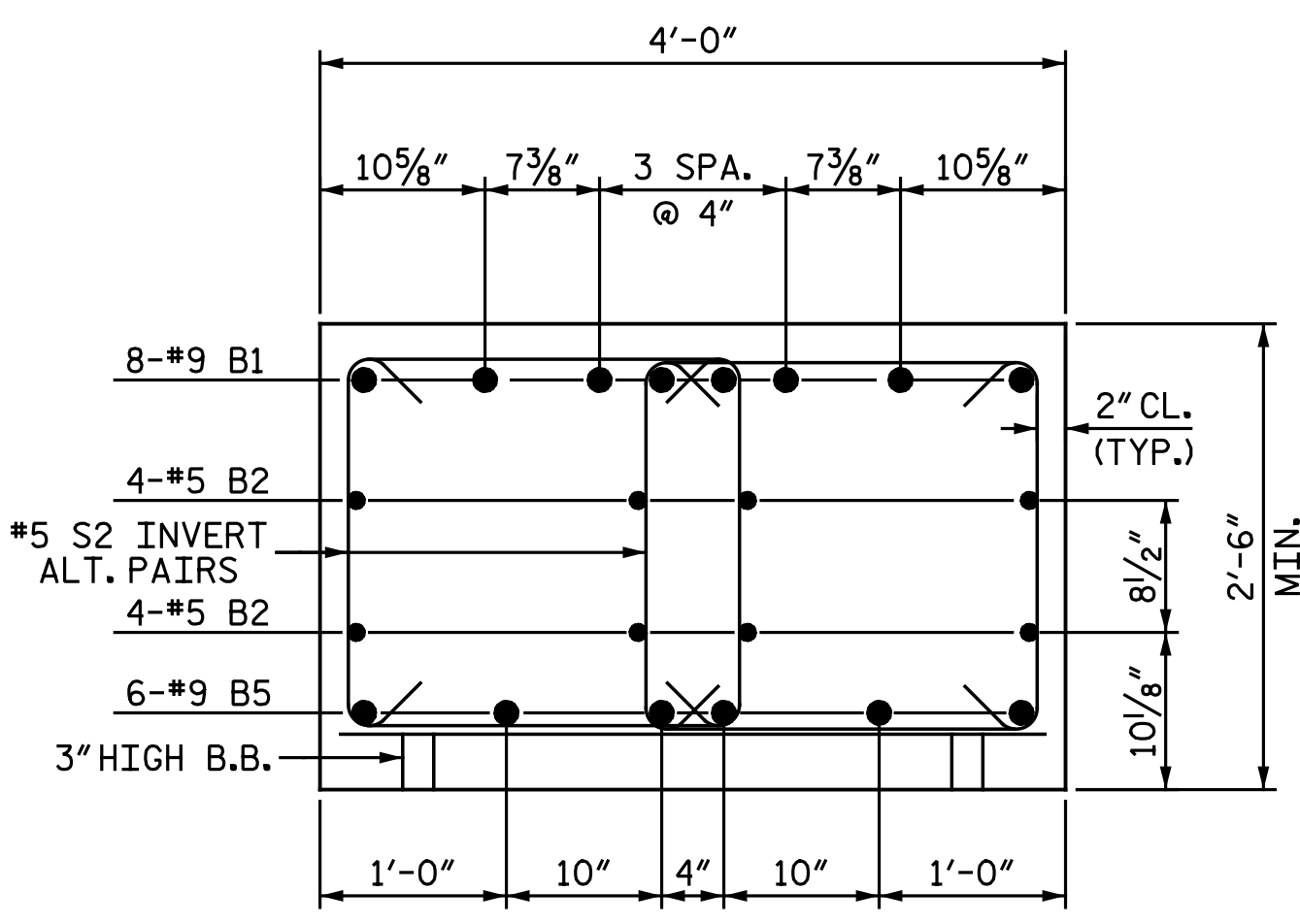
SECTION A-A



ALL BAR DIMENSIONS ARE OUT TO OUT.

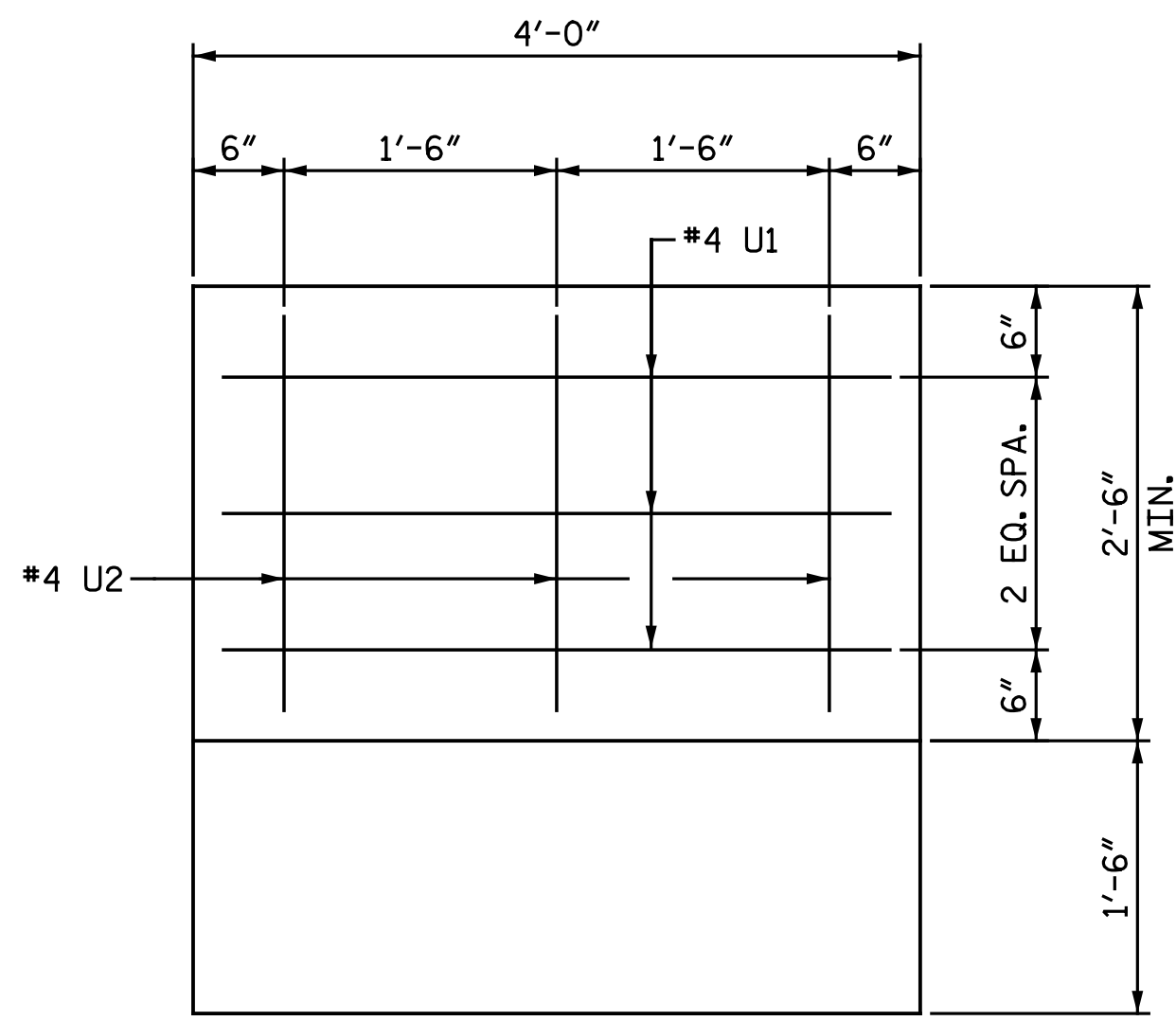
BILL OF MATERIAL					
BENT 1					
BAR	NO.	SIZE	TYPE	LENGTH	WEIGHT
B1	8	9	1	16' - 5"	447
B2	8	5	STR	13' - 11"	116
B3	4	5	STR	13' - 4"	56
B4	4	5	STR	8' - 9"	37
B5	6	9	3	14' - 3"	291
M1	16	9	2	10' - 6"	571
S1	16	5	4	10' - 3"	171
S2	4	5	4	7' - 6"	31
S3	4	5	4	7' - 11"	33
S4	4	5	4	8' - 4"	35
S5	4	5	4	8' - 9"	37
S6	4	5	4	9' - 2"	38
S7	4	5	4	9' - 7"	40
S8	4	5	4	10' - 0"	42
S9	38	4	6	7' - 8"	195
T1	24	6	STR	11' - 6"	415
T2	48	9	STR	11' - 6"	1,877
U1	6	4	5	6' - 6"	26
U2	6	4	5	5' - 0"	20
U3	16	4	5	6' - 8"	71
V1	16	9	2	21' - 4"	1,161
REINFORCING STEEL				LBS.	5,710
CLASS A CONCRETE BREAKDOWN					
POUR 1 - FOOTING				C.Y.	21.4
POUR 2 - COLUMN				C.Y.	9.0
POUR 3 - CAP				C.Y.	8.3
TOTAL				C.Y.	38.7
HP 12 x 53 STEEL PILES					
NO. 6				L.F.	240

NOTES:
FOR "PILE SPLICE DETAIL, SEE "INTEGRAL END BENT 1 DETAILS" SHEETS.



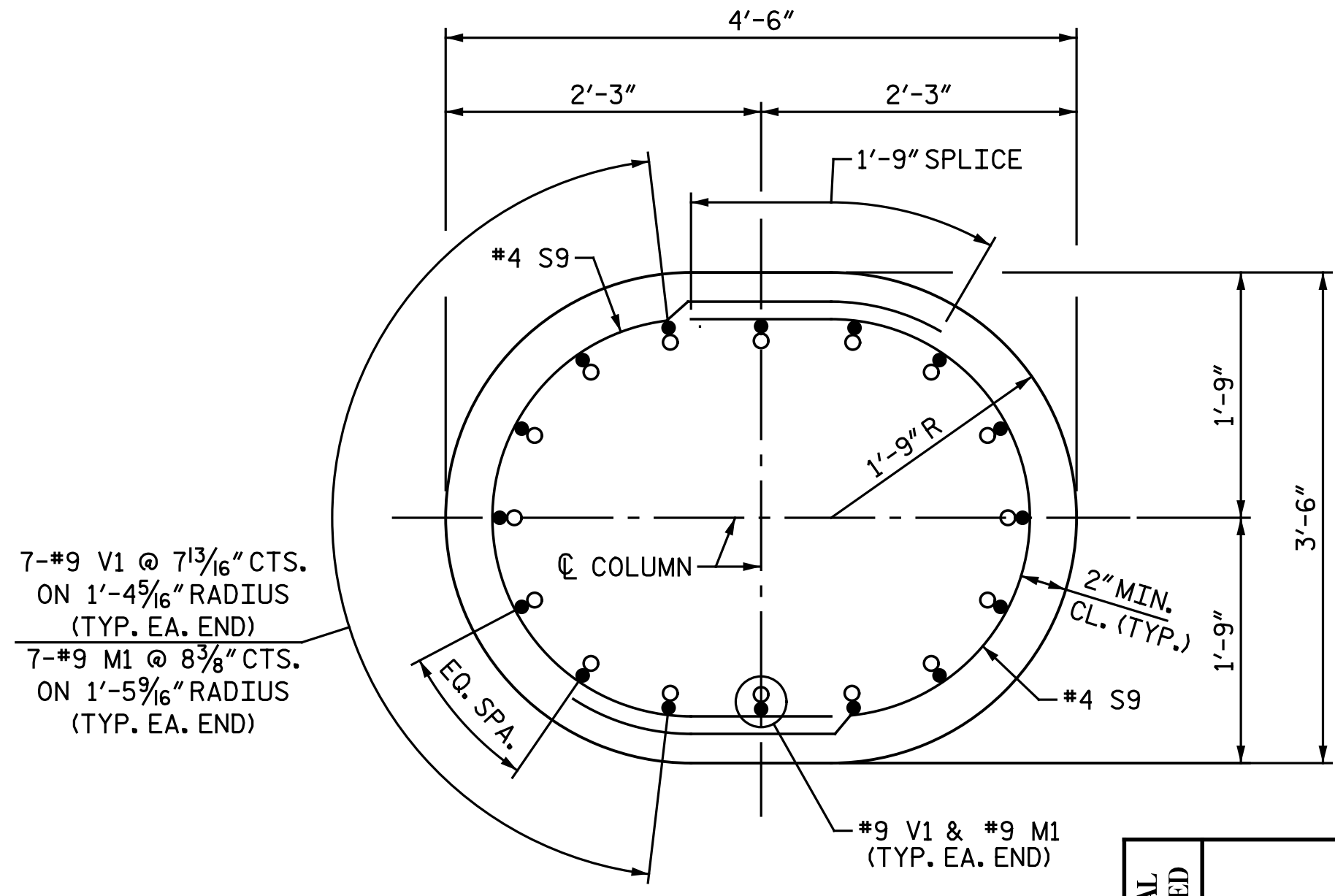
SECTION B-B

#5 B3 BARS NOT SHOWN FOR CLARITY.



VIEW C-C

ONLY END STIRRUPS SHOWN FOR CLARITY.



SECTION D-D

● #9 M1
○ #9 V1

PROJECT NO. U-2524D
GUILFORD COUNTY
STATION: 13+62.84 -PED-

5/5/2016 12:03:29 PM
 File Name: Y:\Projects\NCDOT\U-2524D\Site\1.DWG\Final\402.030.U2524D_SML.B02.dgn
 User: mayhew

DRAWN BY: M. D. MAYHEW DATE: 2-9-16
CHECKED BY: A. M. HOUSTON DATE: 2-16-16

DOCUMENT NOT CONSIDERED FINAL UNLESS ALL SIGNATURES COMPLETED

Michael Baker Engineering
 8000 Regency Parkway, Suite 600
 Cary, North Carolina 27518
 NC License No.: F-1084

STATE OF NORTH CAROLINA DEPARTMENT OF TRANSPORTATION RALEIGH SUBSTRUCTURE BENT 1 DETAILS					
REVISIONS					
NO.	BY:	DATE:	NO.	BY:	DATE:
1			3		
2			4		

SHEET NO. S2-29	
TOTAL SHEETS 33	