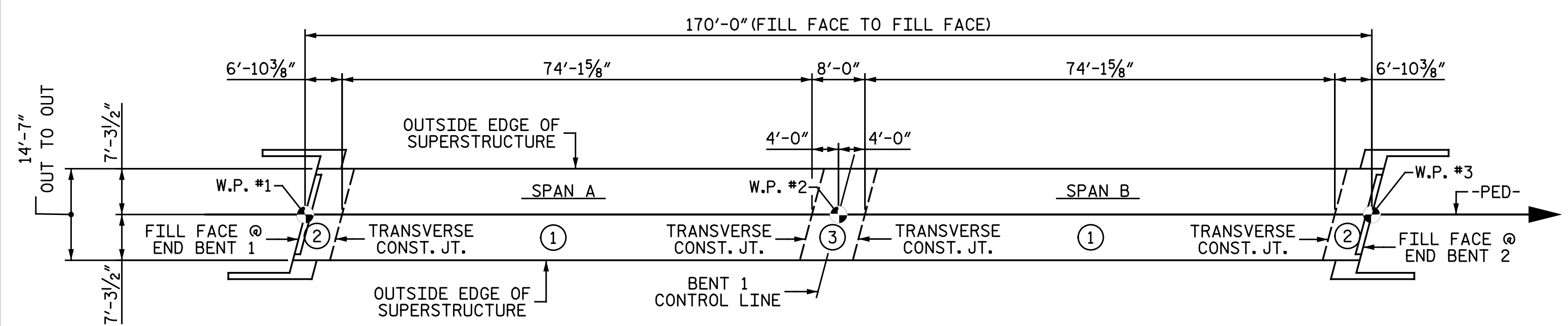


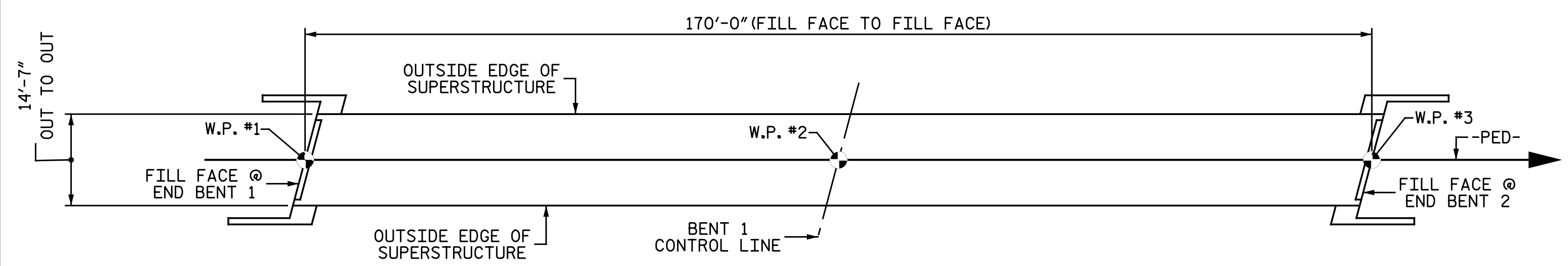
**POUR SEQUENCE**

⊕ DENOTES POUR NUMBER AND DIRECTION.

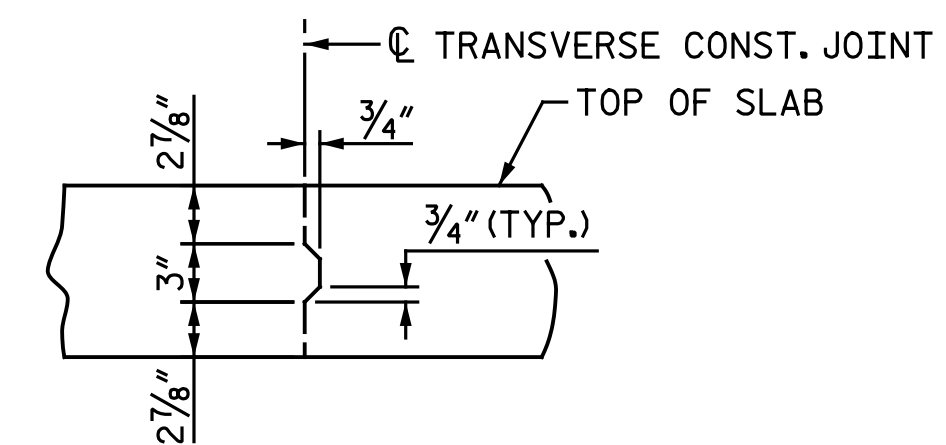


**OPTIONAL POUR SEQUENCE**

⊕ DENOTES POUR NUMBER



LAYOUT FOR COMPUTING AREA  
REINFORCED CONCRETE DECK SLAB  
(SQ. FT. = 2,479)



**TRANSVERSE CONST. JOINT DETAIL**

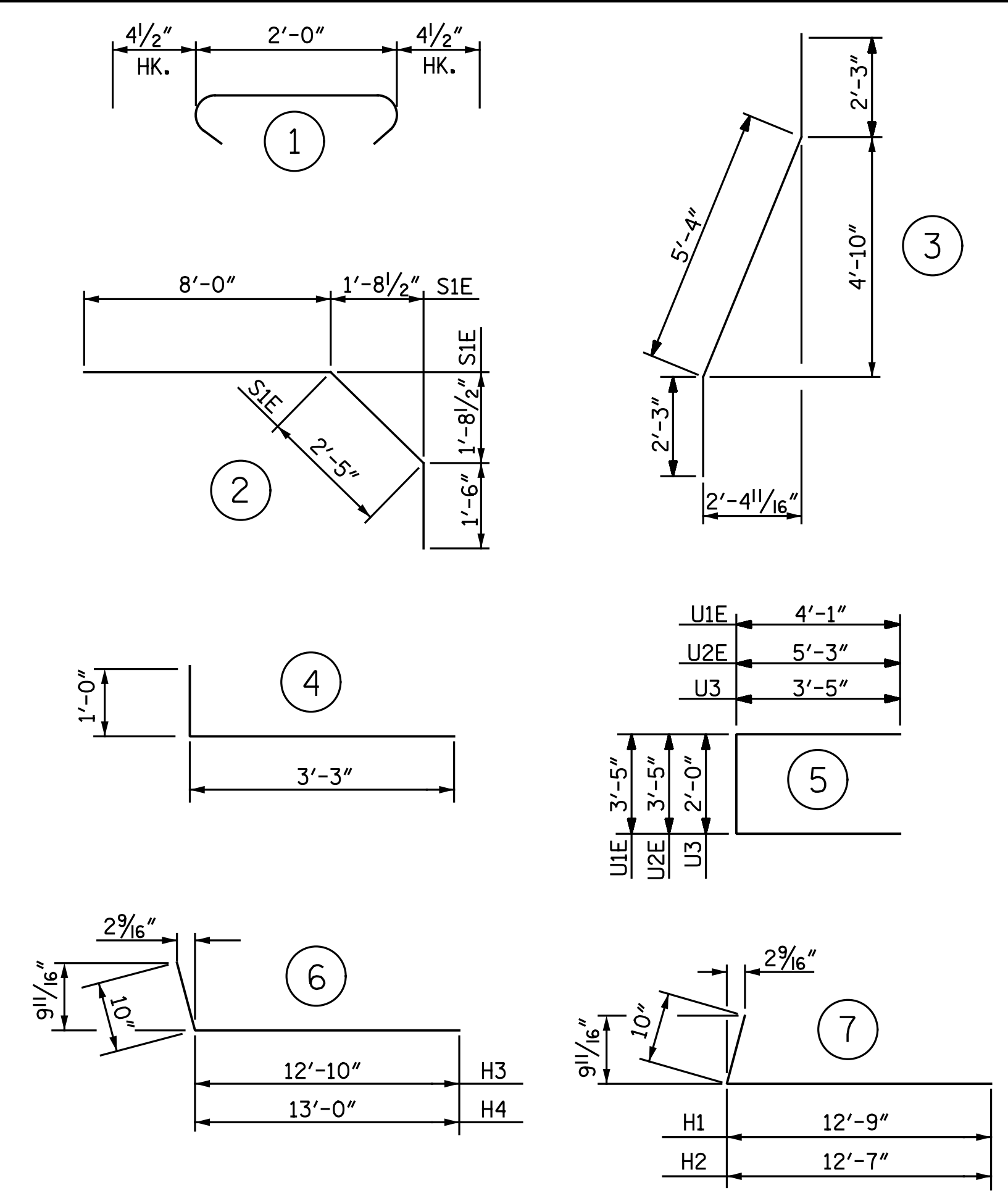
NOTE: REINFORCING STEEL IN SLAB NOT SHOWN. LONGITUDINAL REINFORCING STEEL SHALL BE CONTINUOUS THRU JOINT.

**REINFORCING BAR SCHEDULE**

SPANS A AND B					
BAR	NO.	SIZE	TYPE	LENGTH	WEIGHT
A1E	164	5	STR	14' - 3"	2,437
A101E	2	5	STR	12' - 7"	26
A102E	2	5	STR	8' - 10"	18
A103E	4	5	STR	5' - 1"	21
A2	164	5	STR	14' - 3"	2,437
A201	2	5	STR	12' - 7"	26
A202	2	5	STR	8' - 10"	18
A203	4	5	STR	5' - 1"	21
B1E	42	7	STR	16' - 8"	1,431
B2E	48	4	STR	22' - 1"	708
B3E	12	7	STR	60' - 0"	1,472
B4E	9	7	STR	25' - 0"	460
B5	48	5	STR	58' - 0"	2,904
H1	16	5	7	13' - 7"	227
H2	16	5	7	13' - 5"	224
H3	16	5	6	13' - 8"	228
H4	16	5	6	13' - 10"	231
K1E	10	4	STR	20' - 11"	140
K2E	2	4	STR	6' - 8"	9
K3E	2	4	STR	7' - 9"	10
K4E	4	4	STR	8' - 3"	22
K5E	2	4	STR	7' - 2"	10
K6E	4	4	STR	4' - 6"	12
K7E	4	4	STR	5' - 0"	13
K8E	8	4	STR	5' - 3"	28
K9E	4	4	STR	4' - 9"	13
K10E	8	4	STR	2' - 9"	15
K11	5	4	3	9' - 10"	33
K12	2	4	STR	6' - 8"	9
K13	2	4	STR	7' - 9"	10
K14	4	4	STR	8' - 3"	22
K15	2	4	STR	7' - 2"	10
S1E	22	4	2	11' - 11"	175
S2	16	4	4	4' - 3"	45
S3	32	4	1	2' - 9"	59
U1E	22	4	5	11' - 7"	170
U2E	12	4	5	13' - 11"	112
U3	8	4	5	8' - 10"	47
V2	96	4	STR	5' - 5"	347
REINFORCING STEEL				LBS.	6,898
EPOXY COATED REINF. STEEL				LBS.	7,302

"E" SUFFIX DENOTES EPOXY COATED REINFORCING STEEL

**BAR TYPES**



ALL BAR DIMENSIONS ARE OUT TO OUT

**SUPERSTRUCTURE BILL OF MATERIAL**

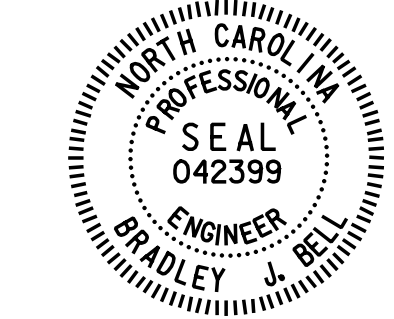
	CLASS AA CONCRETE (CU. YDS.)	REINFORCING STEEL (LBS.)	EPOXY COATED REINFORCING STEEL (LBS.)
SPAN A & B		6,898	7,302
POUR 1	29.7		
POUR 2	41.9		
POUR 3 *	19.9		
TOTALS **	111.4	6,898	7,302

\* POUR 3 QUANTITY INCLUDES UPPER POUR OF WINGS AND INTEGRAL END BENT  
\*\* QUANTITIES FOR CONCRETE PARAPET ARE NOT INCLUDED

**SUPERSTRUCTURE REINFORCING STEEL LENGTHS ARE BASED ON THE FOLLOWING MINIMUM SPLICE LENGTHS**

BAR SIZE	SUPERSTRUCTURE EXCEPT APPROACH SLABS, PARAPET, AND BARRIER RAIL		APPROACH SLABS		PARAPET AND BARRIER RAIL
	EPOXY COATED	UNCOATED	EPOXY COATED	UNCOATED	
#4	2'-0"	1'-9"	2'-0"	1'-9"	2'-9"
#5	2'-6"	2'-2"	2'-6"	2'-2"	3'-5"
#6	3'-0"	2'-7"	3'-10"	2'-7"	4'-4"
#7	5'-3"	3'-6"			
#8	6'-10"	4'-7"			

DOCUMENT NOT CONSIDERED FINAL UNLESS ALL SIGNATURES COMPLETED



DocuSigned by:  
Bradley J. Bell  
C41AF8EAC3A34  
5/5/2016

**Michael Baker International**

Michael Baker Engineering  
8000 Regency Parkway, Suite 600  
Cary, North Carolina 27518  
NC License No.: F-1084

STATE OF NORTH CAROLINA  
DEPARTMENT OF TRANSPORTATION  
RALEIGH  
SUPERSTRUCTURE  
BILL OF MATERIAL

PROJECT NO. U-2524D  
GUILFORD COUNTY  
STATION: 13+62.84 -PED-

REVISIONS						SHEET NO.	
NO.	BY:	DATE:	NO.	BY:	DATE:	S2-24	
1			3			TOTAL SHEETS	
2			4			33	

cmayhew 5/5/2016 12:03:26 PM  
 File Name: Y:\Projects\NCDOT\U-2524D\Site\1.DWG\Final\402\_025.U2524D\_SML.BIM.dgn

DRAWN BY: N. B. SPEAKS DATE: 11-16-15  
CHECKED BY: A. M. HOUSTON DATE: 3-2-16