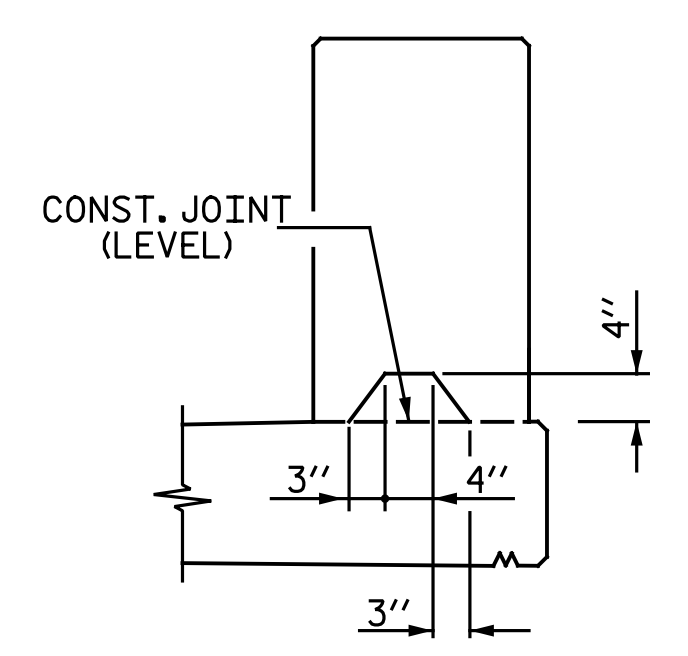
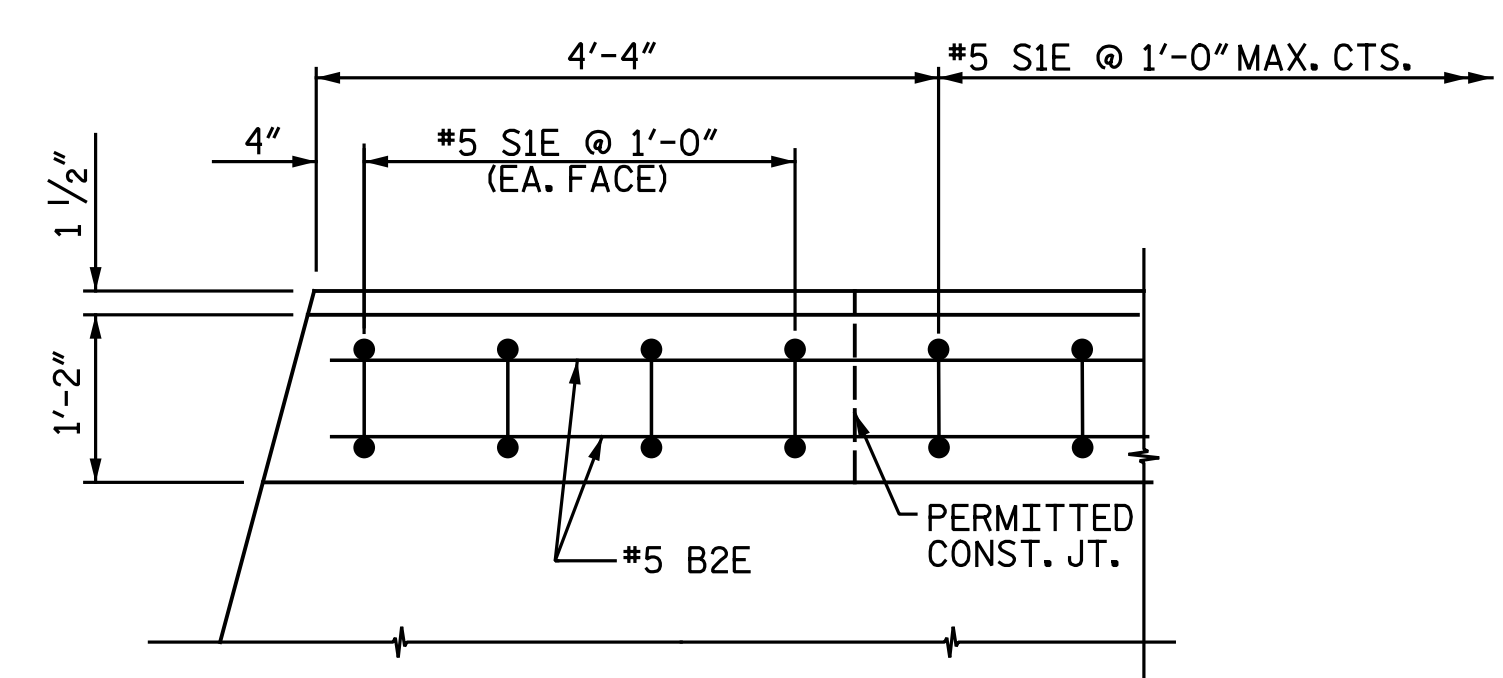


**ELEVATION AT EXPANSION JOINTS**  
(NOTE: OMIT EXPANSION JOINT MATERIAL WHEN SLIP FORM IS USED.)

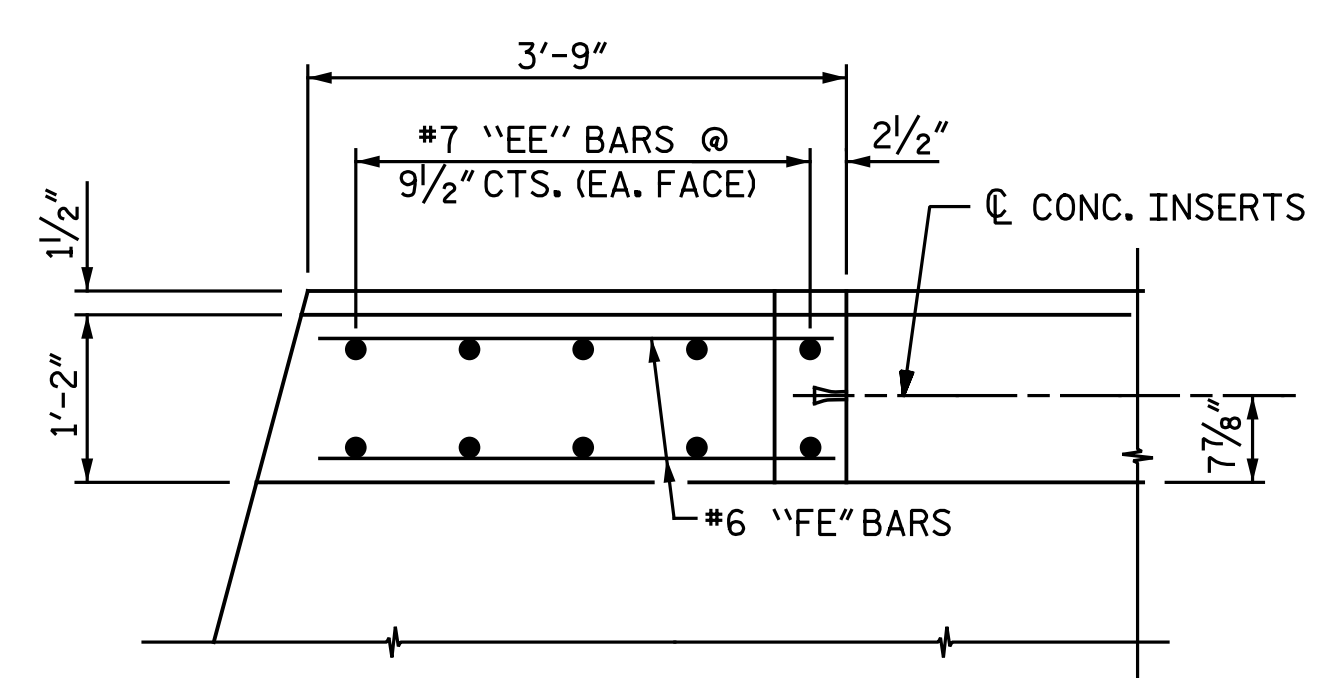


**SECTION S-S**  
AT DAM IN OPEN JOINT  
(THIS IS TO BE USED ONLY WHEN SLIP FORM IS USED)

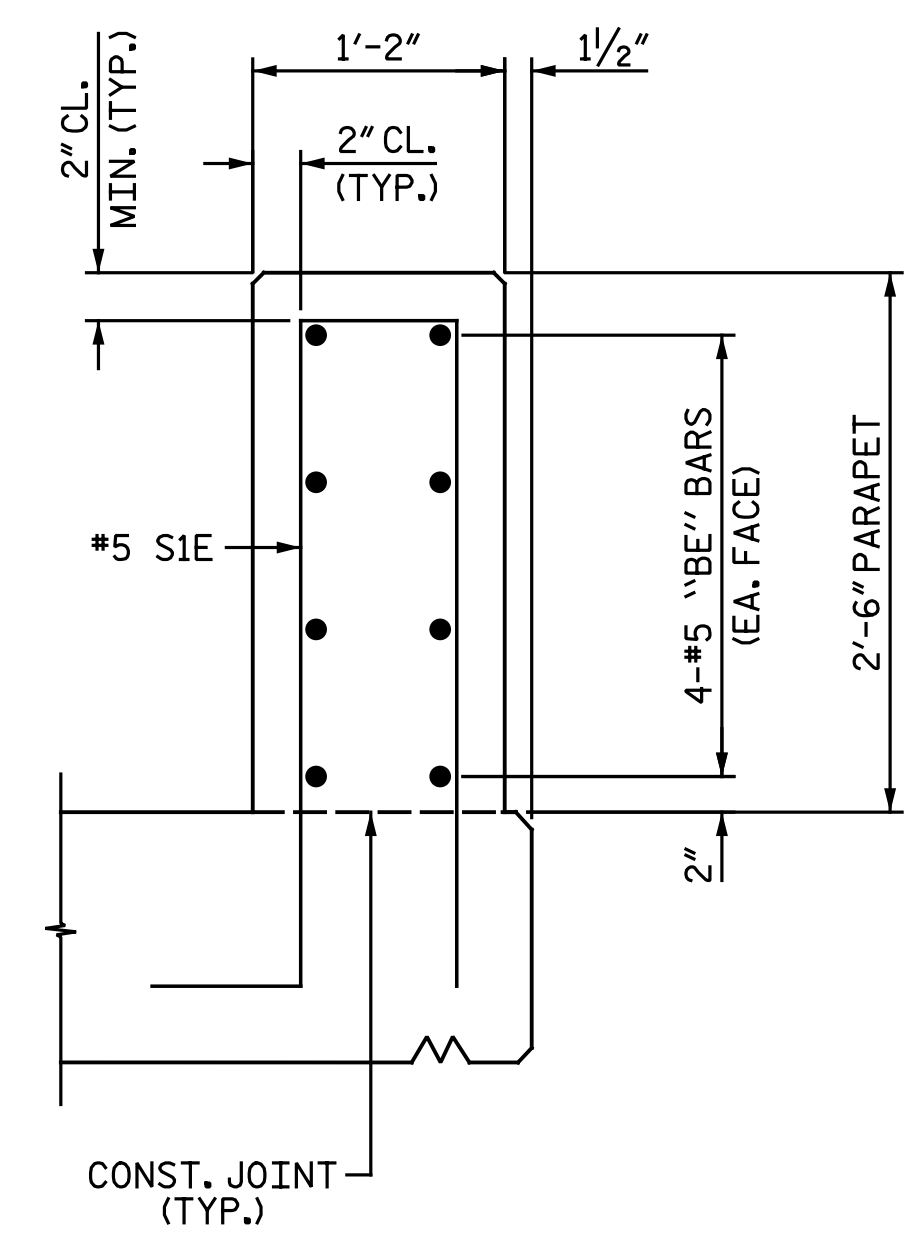
**CONCRETE PARAPET DETAILS**



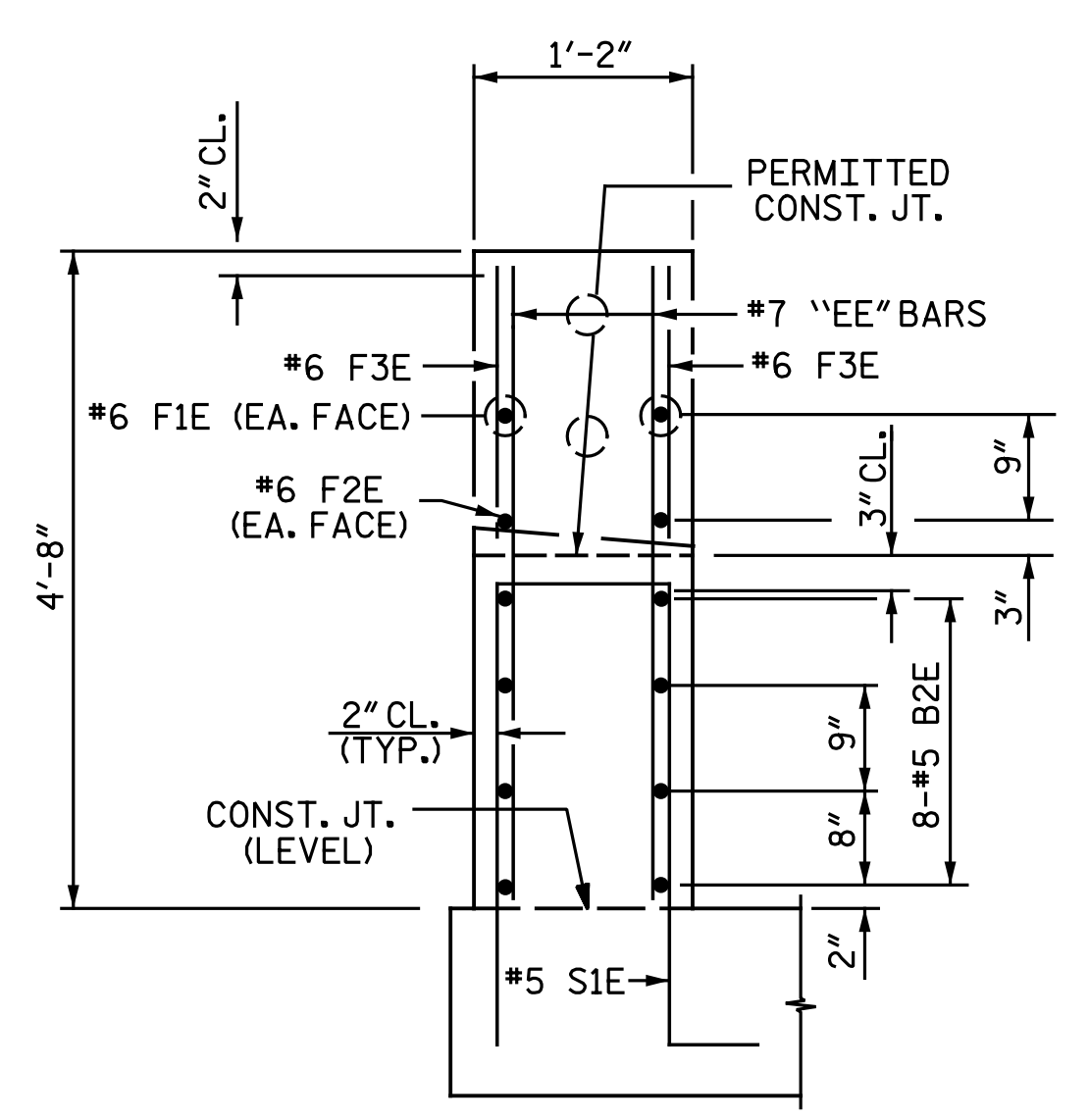
**PLAN OF PARAPET**



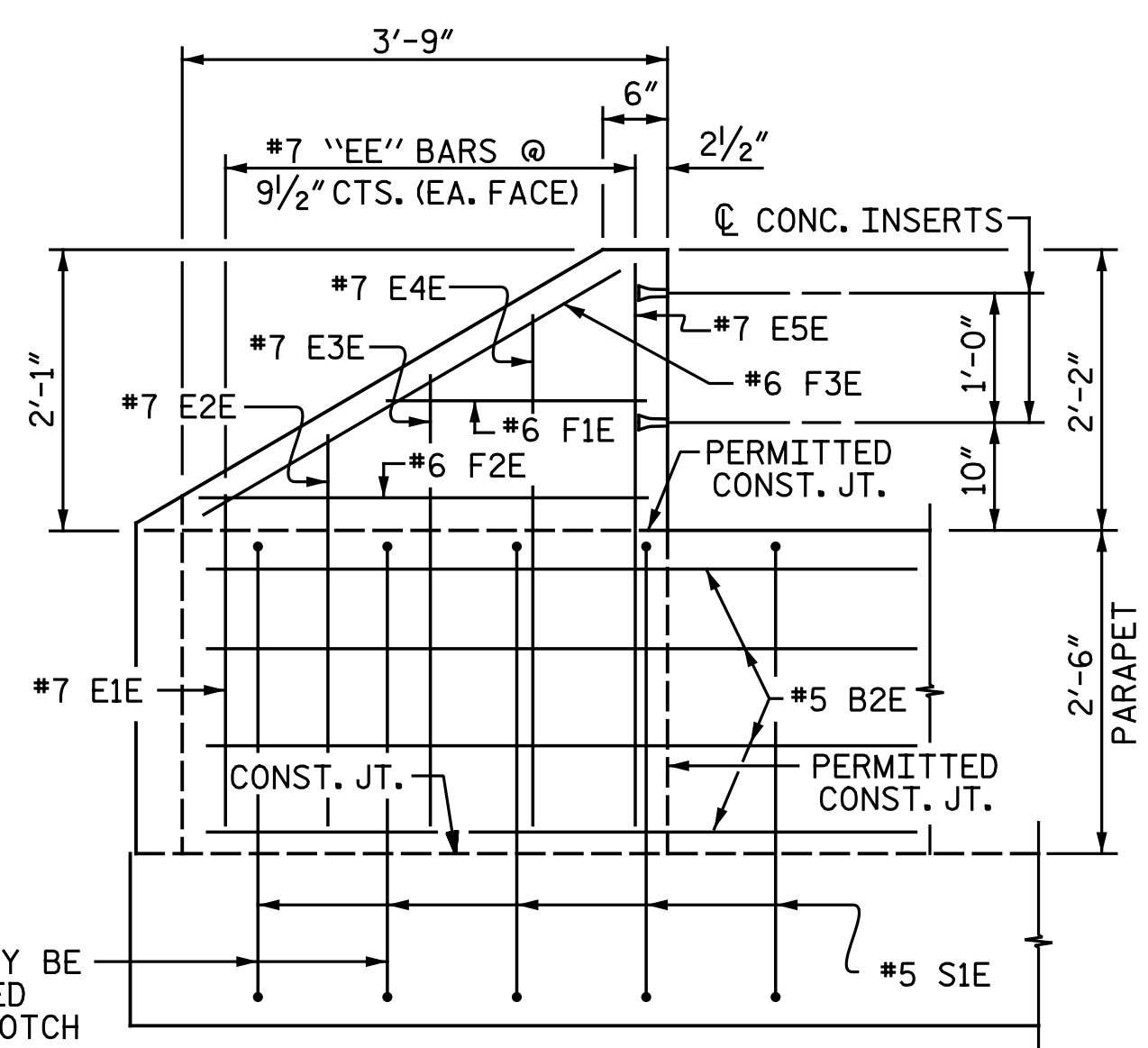
**PLAN OF END POST**



**SECTION THRU PARAPET**  
2 BAR METAL RAIL AND FENCE NOT SHOWN FOR CLARITY



**END VIEW**



**ELEVATION**

THESE #5 S1E BARS MAY BE SHIFTED OR ROTATED SLIGHTLY TO AVOID NOTCH

**PARAPET AND END POST FOR TWO BAR METAL RAIL**

**NOTES:**

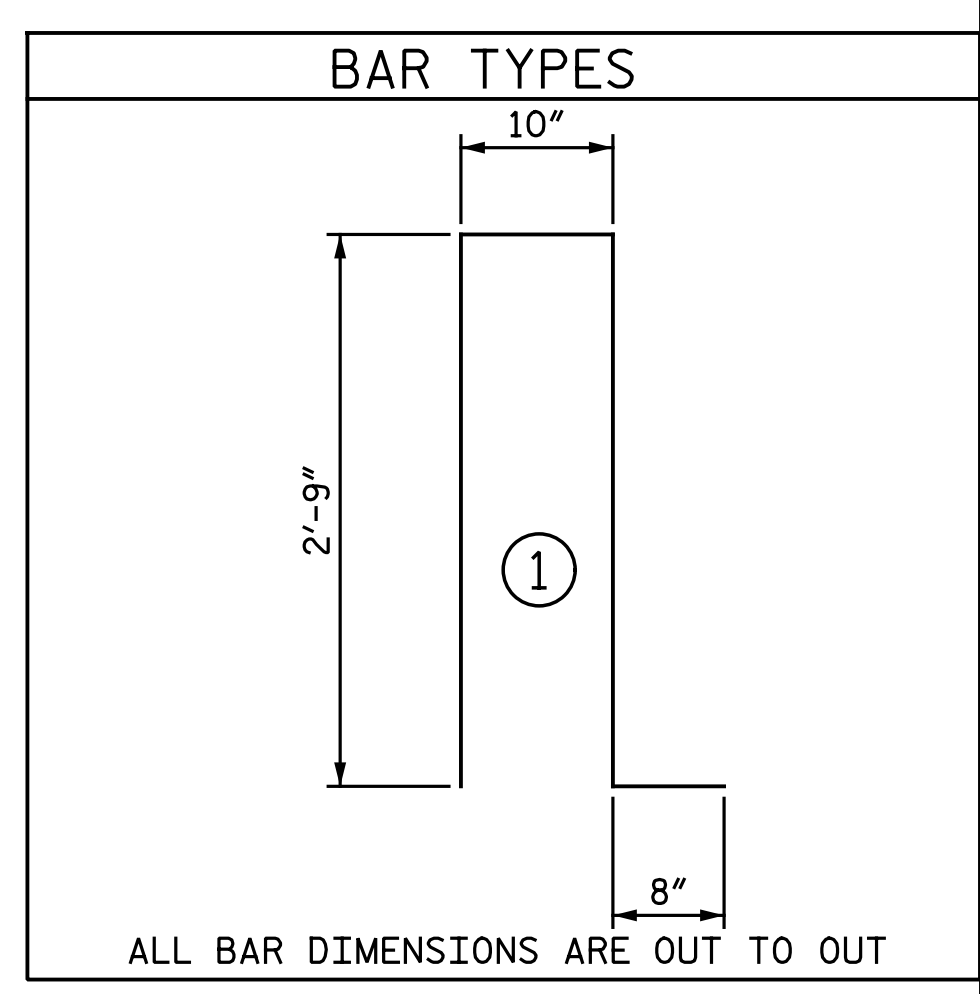
THE CONCRETE PARAPET SHALL NOT BE CAST UNTIL ALL SLAB CONCRETE FOR THAT UNIT SLAB HAS BEEN CAST AND HAS REACHED A MINIMUM COMPRESSIVE STRENGTH OF 3,000 PSI.

ALL REINFORCING STEEL IN CONCRETE PARAPET AND END POSTS SHALL BE EPOXY COATED.

VERTICAL GROOVED CONTRACTION JOINTS, 1/2" IN DEPTH, SHALL BE TOOLED IN ALL EXPOSED FACES OF THE CONCRETE PARAPET AND IN ACCORDANCE WITH ARTICLE 825-10(B) OF THE STANDARD SPECIFICATIONS. THE CONTRACTION JOINT SHALL BE LOCATED AT EACH THIRD POINT BETWEEN CONCRETE PARAPET EXPANSION JOINTS. ONLY ONE CONTRACTION JOINT IS REQUIRED AT MIDPOINT OF CONCRETE PARAPET SEGMENTS LESS THAN 20 FEET IN LENGTH AND NO CONTRACTION JOINTS ARE REQUIRED FOR THOSE SEGMENTS LESS THAN 10 FEET IN LENGTH.

FOR DETAILS OF CONCRETE INSERTS, SEE "RAIL POST SPACINGS AND END OF RAIL DETAILS - FOR ONE OR TWO BAR METAL RAILS" SHEET.

TWO BAR METAL RAIL					
BILL OF MATERIAL FOR PARAPET AND TWO END POSTS					
BAR	NO.	SIZE	TYPE	LENGTH	WEIGHT
B1E	64	5	STR	25' - 2"	1,680
B2E	64	5	STR	8' - 7"	573
B3E	16	5	STR	19' - 9"	330
B4E	16	5	STR	19' - 6"	325
E1E	8	7	STR	2' - 8"	44
E2E	8	7	STR	3' - 1"	50
E3E	8	7	STR	3' - 7"	59
E4E	8	7	STR	4' - 1"	67
E5E	8	7	STR	4' - 6"	74
F1E	8	6	STR	1' - 10"	22
F2E	8	6	STR	3' - 0"	36
F3E	8	6	STR	3' - 5"	41
S1E	342	5	1	7' - 0"	2,497
EPOXY COATED REINFORCING STEEL				LBS.	5,798
CLASS AA CONCRETE				C.Y.	37.6
1'-2" x 2'-6" CONCRETE PARAPET				L.F.	340.00



ALL BAR DIMENSIONS ARE OUT TO OUT

PROJECT NO. U-2524D  
GUILFORD COUNTY  
 STATION: 13+62.84 -PED-

DOCUMENT NOT CONSIDERED FINAL UNLESS ALL SIGNATURES COMPLETED		DEPARTMENT OF TRANSPORTATION RALEIGH SUPERSTRUCTURE CONCRETE PARAPET DETAILS
	DocuSigned by: Bradley J. Bell C41AF8E6C3A034... 5/5/2016	
	<b>Michael Baker</b> INTERNATIONAL	
Michael Baker Engineering 8000 Regency Parkway, Suite 600 Cary, North Carolina 27518 NC License No.: F-1084		
REVISIONS		SHEET NO. S2-19
NO. 1 2	BY: [ ] DATE: [ ]	NO. 3 4
TOTAL SHEETS 33		

DRAWN BY : J.N.A./N.B.S. DATE : 11-18-15  
 CHECKED BY : A. M. HOUSTON DATE : 2-9-16

cmayhew 5/5/2016 12:03:23 PM  
 File Name: Y:\Projects\NCDOT\U-2524D\Site\1.DWG\Final\402\_020\_U2524D\_SMLL.dwg