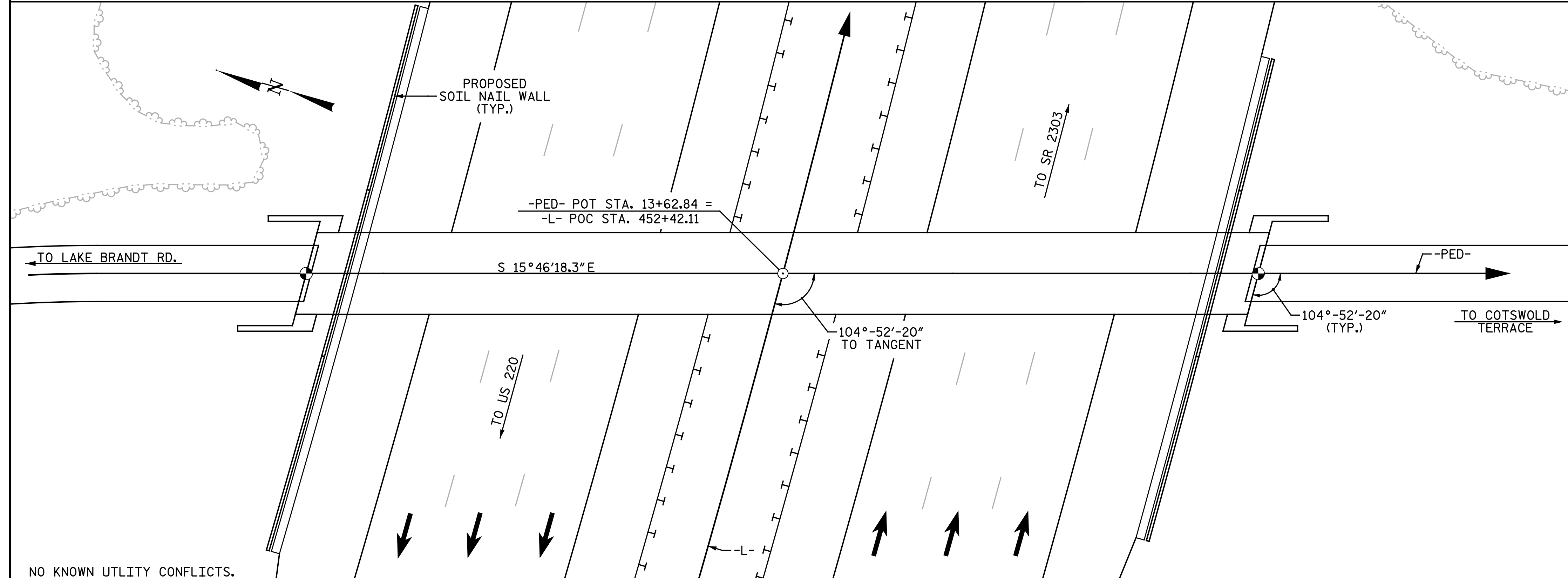


BM #15 - RR SPIKE SET IN 30" OAK TREE STA. 206+31.00 -L-, 484.00' RIGHT, EL. 858.80



LOCATION SKETCH

NOTES:

- ASSUMED LIVE LOAD = H-10 OR PEDESTRIAN LOADING.
- THIS BRIDGE HAS BEEN DESIGNED IN ACCORDANCE WITH THE REQUIREMENTS OF THE AASHTO LRFD BRIDGE DESIGN SPECIFICATIONS.
- THIS BRIDGE IS LOCATED IN SEISMIC ZONE 1.
- FOR OTHER DESIGN DATA AND GENERAL NOTES, SEE SHEET SN.
- FOR SUBMITTAL OF WORKING DRAWINGS, SEE SPECIAL PROVISIONS.
- FOR FALSEWORK AND FORMWORK, SEE SPECIAL PROVISIONS.
- FOR CRANE SAFETY, SEE SPECIAL PROVISIONS.
- FOR GROUT FOR STRUCTURES, SEE SPECIAL PROVISIONS.
- FOR EROSION CONTROL MEASURES, SEE EROSION CONTROL PLANS.
- FOR PLACING LOAD ON STRUCTURAL MEMBERS, SEE SPECIAL PROVISIONS.
- THE CONTRACTOR SHALL PROVIDE INDEPENDENT ASSURANCE SAMPLES OF REINFORCING STEEL AS FOLLOWS: FOR PROJECTS REQUIRING UP TO 400 TONS OF REINFORCING STEEL, ONE 30 INCH SAMPLE OF EACH SIZE BAR USED, AND FOR PROJECTS REQUIRING OVER 400 TONS OF REINFORCING STEEL, TWO 30 INCH SAMPLES OF EACH SIZE BAR USED. THE BARS FROM WHICH THE SAMPLES ARE TAKEN MUST THEN BE SPLICED WITH REPLACEMENT BARS OF THE SIZE AND LENGTH OF THE SAMPLE, PLUS A MINIMUM LAP SPLICE OF THIRTY BAR DIAMETERS. PAYMENT FOR THE SAMPLES OF REINFORCING STEEL SHALL BE CONSIDERED INCIDENTAL TO VARIOUS PAY ITEMS.
- NEEDLE BEAMS WILL NOT BE ALLOWED UNLESS OTHERWISE CALLED FOR ON THE PLANS OR APPROVED BY THE ENGINEER.
- PRESTRESSED CONCRETE DECK PANELS MAY BE USED IN LIEU OF METAL STAY-IN-PLACE FORMS IN ACCORDANCE WITH ARTICLE 420-3 OF THE STANDARD SPECIFICATIONS.
- REMOVABLE FORMS MAY BE USED IN LIEU OF METAL STAY-IN-PLACE FORMS IN ACCORDANCE WITH ARTICLE 420-3 OF THE STANDARD SPECIFICATIONS.
- THE CLASS AA CONCRETE IN THE BRIDGE DECK SHALL CONTAIN FLY ASH OR GROUND GRANULATED BLAST FURNACE SLAG AT THE SUBSTITUTION RATE SPECIFIED IN ARTICLE 1024-1 AND IN ACCORDANCE WITH ARTICLES 1024-5 AND 1024-6 OF THE STANDARD SPECIFICATIONS. NO PAYMENT WILL BE MADE FOR THIS SUBSTITUTION AS IT IS CONSIDERED INCIDENTAL TO THE COST OF THE REINFORCED CONCRETE DECK SLAB.

TOTAL BILL OF MATERIAL

	VINYL COATED CHAIN LINK FENCE, 79" FABRIC	FOUNDATION EXCAVATION FOR BENT 1 AT STA. 13+62.84 -PED-	REINFORCED CONCRETE DECK SLAB	CLASS A CONCRETE	REINFORCING STEEL	54" PRESTRESSED CONCRETE GIRDERS	HP 12 X 53 STEEL PILES	TWO BAR METAL RAIL	1'-2' X 2'-6" CONCRETE PARAPET	4" SLOPE PROTECTION	ELASTOMERIC BEARINGS		
	LIN. FT.	LUMP SUM	SQ. FT.	CU. YDS.	LBS.	NO.	LIN. FT.	NO.	LIN. FT.	LIN. FT.	SQ. YDS.	LUMP SUM	
SUPERSTRUCTURE	323.39		2,479		6,898	4	333.6		324.4	340.0		LUMP SUM	
END BENT 1				11.9	1,644		4	200			7		
BENT 1		LUMP SUM		38.7	5,710		6	240					
END BENT 2				11.9	1,644		4	220			7		
TOTAL	323.39	LUMP SUM	2,479	62.5	15,896	4	333.6	14	660	324.4	340.0	14	LUMP SUM

PROJECT NO. U-2524D  
GUILFORD COUNTY  
 STATION: 13+62.84 -PED-  
452+42.11 -L-  
 SHEET 3 OF 4

cmayhew 5/5/2016 12:03:13 PM  
 File Name: Y:\Projects\NCDOT\U-2524D\Site\1.DWG\Final\402\_004\_U2524D\_SML\_GD03.dgn

DRAWN BY : N. B. SPEAKS DATE : 11-10-15  
 CHECKED BY : A. M. HOUSTON DATE : 2-8-16

DOCUMENT NOT CONSIDERED FINAL UNLESS ALL SIGNATURES COMPLETED	 DocuSigned by: Bradley J. Bell C41A3F8E3A3434... 5/5/2016	STATE OF NORTH CAROLINA DEPARTMENT OF TRANSPORTATION RALEIGH <b>GENERAL DRAWING</b> PEDESTRIAN BRIDGE OVER GREENSBORO WESTERN URBAN LOOP BETWEEN LAKE BRANDT RD. AND COTSWOLD TERRACE		SHEET NO. <b>S2-3</b>
		REVISIONS		TOTAL SHEETS <b>33</b>
		<b>Michael Baker INTERNATIONAL</b> Michael Baker Engineering 8000 Regency Parkway, Suite 600 Cary, North Carolina 27518 NC License No.: F-1084	NO. 1 BY: [ ] DATE: [ ]	NO. 2 BY: [ ] DATE: [ ]