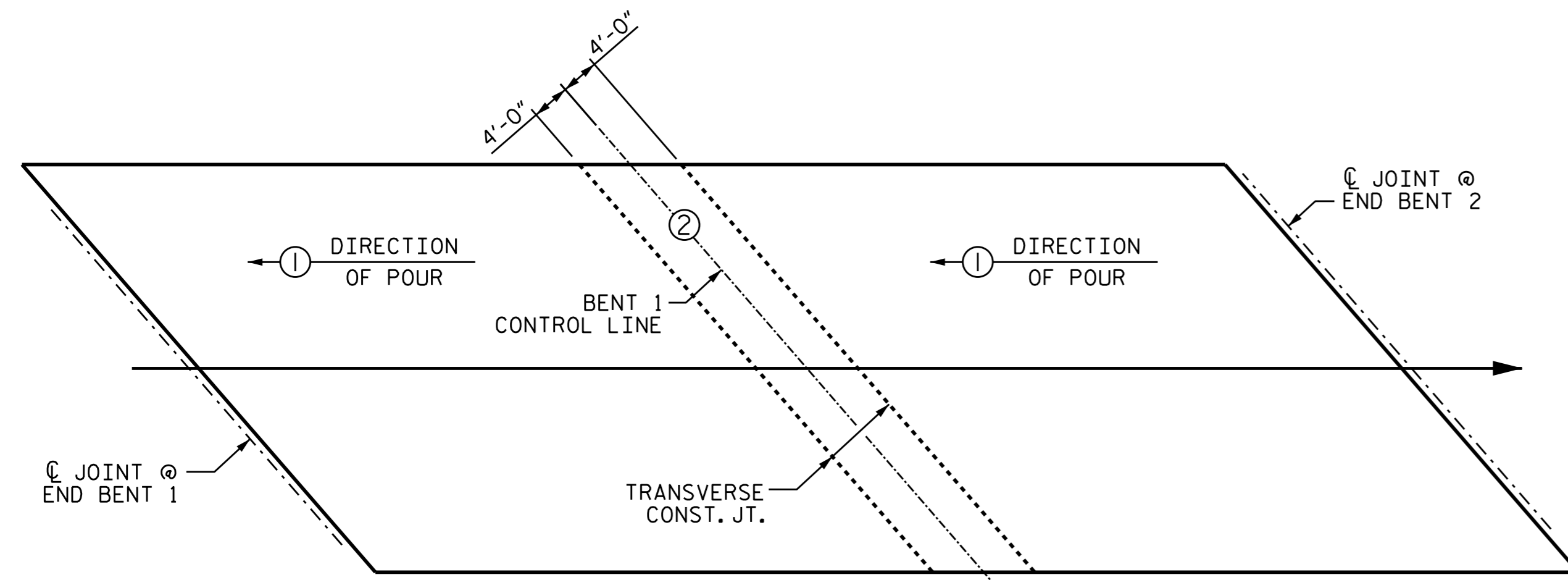


TRANSVERSE CONSTRUCTION JOINT DETAIL

NOTE: REINFORCING STEEL IN SLAB NOT SHOWN. LONGITUDINAL REINFORCING STEEL SHALL BE CONTINUOUS THRU JOINT.

SUPERSTRUCTURE REINFORCING STEEL LENGTHS ARE BASED ON THE FOLLOWING MINIMUM SPLICE LENGTHS

| BAR SIZE | SUPERSTRUCTURE EXCEPT APPROACH SLABS, PARAPET, AND BARRIER RAIL | | APPROACH SLABS | | PARAPET AND BARRIER RAIL |
|----------|---|----------|----------------|----------|--------------------------|
| | EPOXY COATED | UNCOATED | EPOXY COATED | UNCOATED | |
| #4 | 2'-0" | 1'-9" | 2'-0" | 1'-9" | 2'-9" |
| #5 | 2'-6" | 2'-2" | 2'-6" | 2'-2" | 3'-5" |
| #6 | 3'-0" | 2'-7" | 3'-10" | 2'-7" | 4'-4" |
| #7 | 5'-3" | 3'-6" | | | |
| #8 | 6'-10" | 4'-7" | | | |

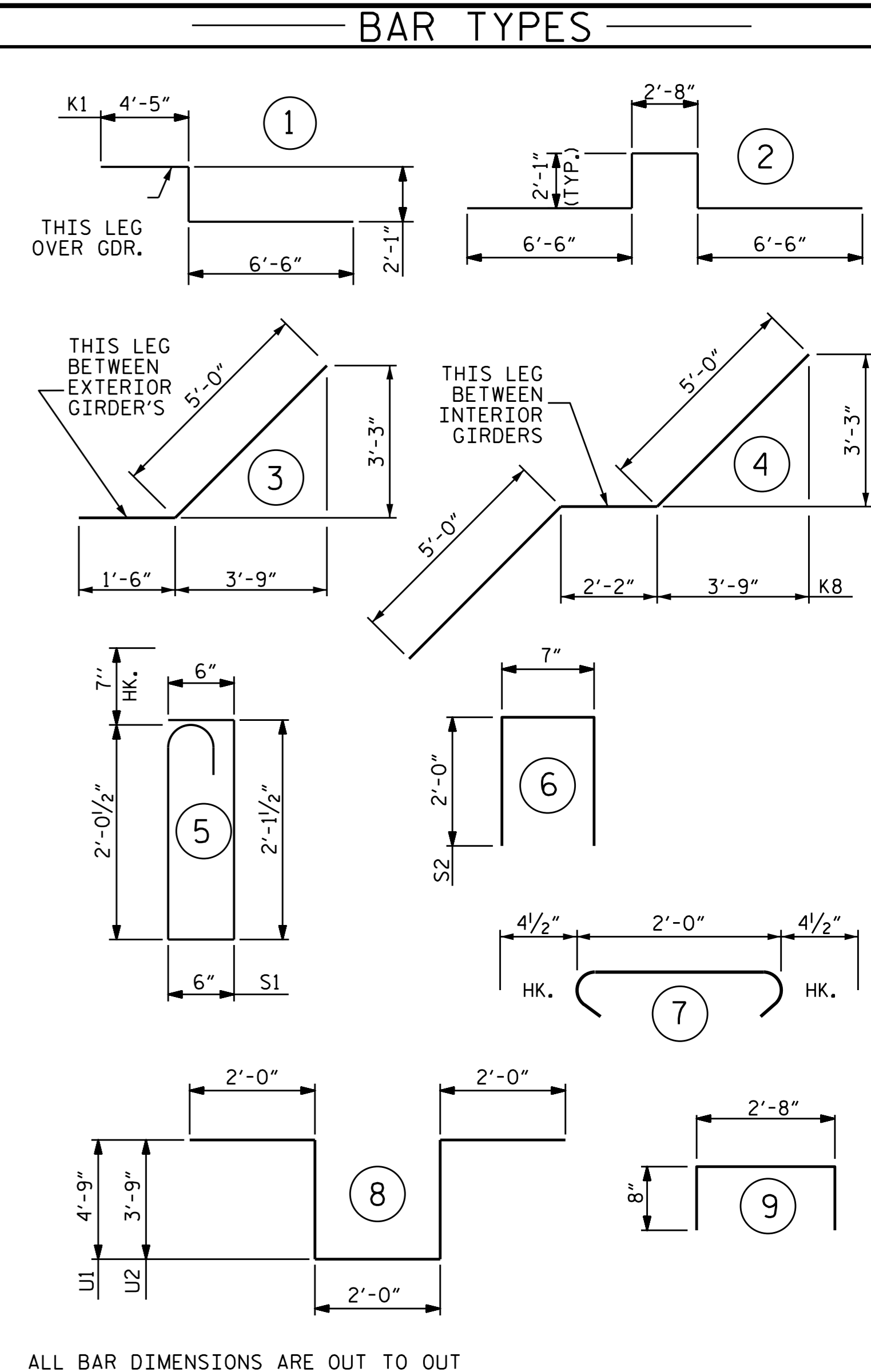


OPTIONAL POURING SEQUENCE

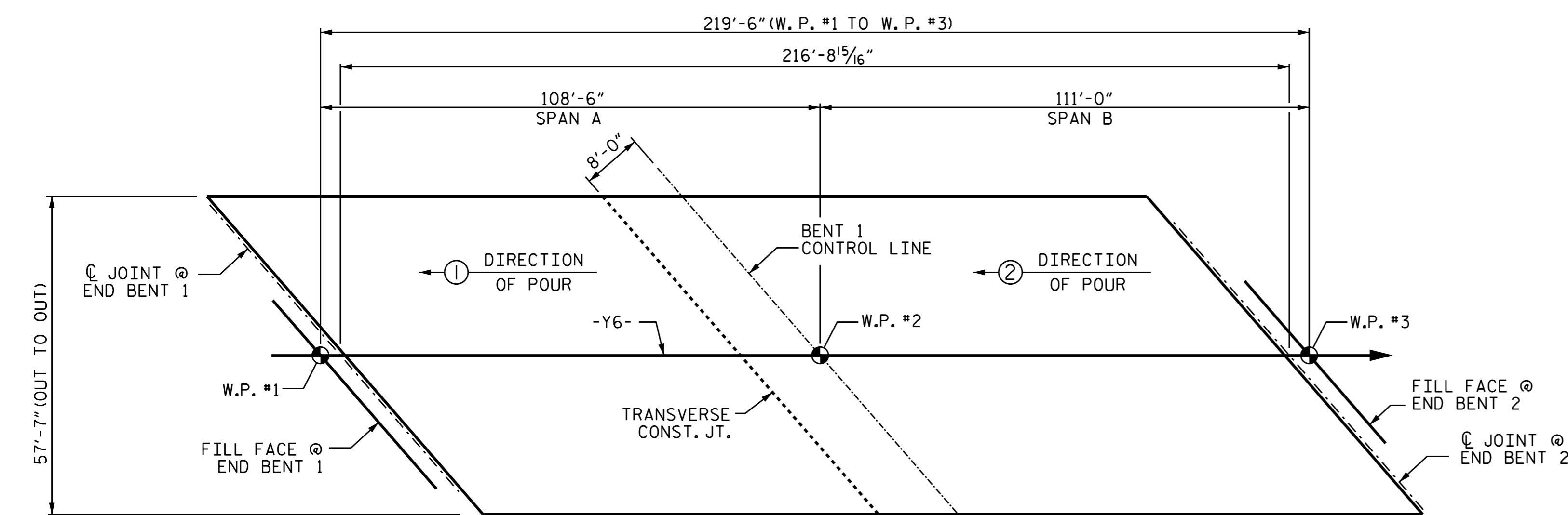
POUR 2 CANNOT BE STARTED UNTIL BOTH ADJACENT POURS LABELED POUR #1 REACH A MINIMUM OF 3000 PSI.

| BILL OF MATERIAL | | | | | | | | | | | | | | | |
|------------------|-----|------|------|---------|--------|------|-----|------|------|---|--------|----|------|---------|-----|
| BAR | NO. | SIZE | TYPE | LENGTH | WEIGHT | BAR | NO. | SIZE | TYPE | LENGTH | WEIGHT | | | | |
| *A1 | 307 | #5 | STR | 57'-3" | 18332 | A213 | 6 | #5 | STR | 23'-11" | 150 | | | | |
| A2 | 307 | #5 | STR | 57'-3" | 18332 | A214 | 6 | #5 | STR | 25'-10" | 162 | | | | |
| *A3 | 6 | #6 | STR | 14'-6" | 131 | A215 | 6 | #5 | STR | 27'-8" | 173 | | | | |
| | | | | | | A216 | 6 | #5 | STR | 29'-7" | 185 | | | | |
| *A101 | 4 | #5 | STR | 2'-2" | 9 | A217 | 6 | #5 | STR | 31'-5" | 197 | | | | |
| *A102 | 6 | #5 | STR | 3'-4" | 21 | A218 | 6 | #5 | STR | 33'-4" | 209 | | | | |
| *A103 | 6 | #5 | STR | 5'-3" | 33 | A219 | 6 | #5 | STR | 35'-2" | 220 | | | | |
| *A104 | 6 | #5 | STR | 7'-1" | 44 | A220 | 6 | #5 | STR | 37'-1" | 232 | | | | |
| *A105 | 6 | #5 | STR | 8'-11" | 56 | A221 | 6 | #5 | STR | 38'-11" | 244 | | | | |
| *A106 | 6 | #5 | STR | 10'-10" | 68 | A222 | 6 | #5 | STR | 40'-10" | 256 | | | | |
| *A107 | 6 | #5 | STR | 12'-9" | 80 | A223 | 6 | #5 | STR | 42'-8" | 267 | | | | |
| *A108 | 6 | #5 | STR | 14'-7" | 91 | A224 | 6 | #5 | STR | 44'-7" | 279 | | | | |
| *A109 | 6 | #5 | STR | 15'-5" | 96 | A225 | 6 | #5 | STR | 46'-5" | 290 | | | | |
| *A110 | 6 | #5 | STR | 18'-4" | 115 | A226 | 6 | #5 | STR | 48'-4" | 302 | | | | |
| *A111 | 6 | #5 | STR | 20'-3" | 127 | A227 | 6 | #5 | STR | 50'-2" | 314 | | | | |
| *A112 | 6 | #5 | STR | 22'-1" | 138 | A228 | 6 | #5 | STR | 52'-0" | 325 | | | | |
| *A113 | 6 | #5 | STR | 23'-11" | 150 | A229 | 6 | #5 | STR | 53'-11" | 337 | | | | |
| *A114 | 6 | #5 | STR | 25'-10" | 162 | A230 | 6 | #5 | STR | 55'-10" | 349 | | | | |
| *A115 | 6 | #5 | STR | 27'-8" | 173 | | | | | | | | | | |
| *A116 | 6 | #5 | STR | 29'-7" | 185 | *B1 | 117 | #4 | STR | 25'-1" | 1960 | | | | |
| *A117 | 6 | #5 | STR | 31'-5" | 197 | *B2 | 78 | #7 | STR | 40'-7" | 6470 | | | | |
| *A118 | 6 | #5 | STR | 33'-4" | 209 | *B3 | 38 | #7 | STR | 33'-0" | 2563 | | | | |
| *A119 | 6 | #5 | STR | 35'-2" | 220 | *B4 | 117 | #4 | STR | 25'-8" | 2006 | | | | |
| *A120 | 6 | #5 | STR | 37'-1" | 232 | B5 | 248 | #5 | STR | 55'-7" | 14377 | | | | |
| *A121 | 6 | #5 | STR | 38'-11" | 244 | | | | | | | | | | |
| *A122 | 6 | #5 | STR | 40'-10" | 256 | *G1 | 4 | #5 | STR | 39'-2" | 163 | | | | |
| *A123 | 6 | #5 | STR | 42'-8" | 267 | | | | | | | | | | |
| *A124 | 6 | #5 | STR | 44'-7" | 279 | *K1 | 8 | #7 | 1 | 13'-0" | 213 | | | | |
| *A125 | 6 | #5 | STR | 46'-5" | 290 | *K2 | 24 | #7 | 2 | 19'-10" | 973 | | | | |
| *A126 | 6 | #5 | STR | 48'-4" | 302 | *K3 | 42 | #6 | STR | 7'-3" | 457 | | | | |
| *A127 | 6 | #5 | STR | 50'-2" | 314 | K4 | 28 | #4 | STR | 7'-3" | 136 | | | | |
| *A128 | 6 | #5 | STR | 52'-0" | 325 | K5 | 28 | #4 | STR | 8'-7" | 161 | | | | |
| *A129 | 6 | #5 | STR | 53'-11" | 337 | K6 | 14 | #4 | STR | 5'-1" | 48 | | | | |
| *A130 | 6 | #5 | STR | 55'-10" | 349 | K7 | 10 | #4 | 3 | 7'-2" | 48 | | | | |
| | | | | | | K8 | 30 | #4 | 4 | 12'-2" | 244 | | | | |
| A201 | 4 | #5 | STR | 2'-2" | 9 | | | | | | | | | | |
| A202 | 6 | #5 | STR | 3'-4" | 21 | *S1 | 98 | #5 | 5 | 5'-9" | 588 | | | | |
| A203 | 6 | #5 | STR | 5'-3" | 33 | *S2 | 98 | #4 | 6 | 4'-7" | 300 | | | | |
| A204 | 6 | #5 | STR | 7'-1" | 44 | S3 | 154 | #4 | 7 | 2'-9" | 283 | | | | |
| A205 | 6 | #5 | STR | 8'-11" | 56 | | | | | | | | | | |
| A206 | 6 | #5 | STR | 10'-10" | 68 | U1 | 28 | #4 | 8 | 15'-6" | 290 | | | | |
| A207 | 6 | #5 | STR | 12'-9" | 80 | U2 | 14 | #4 | 8 | 13'-6" | 126 | | | | |
| A208 | 6 | #5 | STR | 14'-7" | 91 | | | | | | | | | | |
| A209 | 6 | #5 | STR | 15'-5" | 96 | | | | | | | | | | |
| A210 | 6 | #5 | STR | 18'-4" | 115 | | | | | | | | | | |
| A211 | 6 | #5 | STR | 20'-3" | 127 | | | | | | | | | | |
| A212 | 6 | #5 | STR | 22'-1" | 138 | | | | | | | | | | |
| | | | | | | | | | | REINFORCING STEEL = 39,413 LBS | | | | | |
| | | | | | | | | | | *EPOXY COATED REINF. STEEL= 39,524 LBS | | | | | |
| | | | | | | | | | | SIDEWALK QUANTITY (FOR RIGHT SIDE ONLY) | | | | | |
| | | | | | | | | | | *B6 | 40 | #4 | STR. | 28'-10" | 770 |
| | | | | | | | | | | *G2 | 217 | #4 | STR. | 6'-7" | 954 |
| | | | | | | | | | | *U3 | 64 | #4 | 9 | 4'-0" | 171 |
| | | | | | | | | | | *EPOXY COATED REINF. STEEL= 1,895 LBS | | | | | |

* DENOTES EPOXY COATED REINF. STEEL



ALL BAR DIMENSIONS ARE OUT TO OUT



LAYOUT FOR POURING SEQUENCE & COMPUTING AREA REINFORCED CONCRETE DECK SLAB (SQ. FT. = 12,481)

| SUPERSTRUCTURE BILL OF MATERIAL | | | |
|---------------------------------|-----------------------------|-------------------------|--------------------------------------|
| | CLASS AA CONCRETE (CU. YD.) | REINFORCING STEEL (LBS) | EPOXY COATED REINFORCING STEEL (LBS) |
| SPANS A & B | | 39,413 | 39,524 |
| POUR NO. 1 | 173.1 | | |
| POUR NO. 2 | 211.1 | | |
| SIDEWALK | 26.7 | | 1,895 |
| TOTALS ** | 410.9 | 39,413 | 41,419 |

** QUANTITIES INCLUDED WITH SPAN TOTALS

| GROOVING BRIDGE FLOORS | |
|------------------------|---------------|
| APPROACH SLABS | 2,284 SQ.FT. |
| BRIDGE DECK | 10,058 SQ.FT. |
| TOTAL | 12,342 SQ.FT. |



DocuSigned by: Ting Fang 7/1/2016

PROJECT NO. U-2524D
GUILFORD COUNTY
STATION: 25+18.62 -Y6-

| STATE OF NORTH CAROLINA DEPARTMENT OF TRANSPORTATION RALEIGH | | | | | |
|--|-----|-------|-----|-----|-----------------|
| SUPERSTRUCTURE | | | | | |
| BILL OF MATERIAL | | | | | |
| REVISIONS | | | | | SHEET NO. |
| NO. | BY: | DATE: | NO. | BY: | DATE: |
| 1 | | | 3 | | |
| 2 | | | 4 | | |
| | | | | | TOTAL SHEETS 33 |

DOCUMENT NOT CONSIDERED FINAL UNLESS ALL SIGNATURES COMPLETED

| | |
|--|----------------------|
| ASSEMBLED BY: P.N.HOLDER | DATE: 03/16 |
| CHECKED BY: T.H.FANG | DATE: 4/21/16 |
| DESIGN ENGINEER OF RECORD: P.K. NEWTON | DATE: 5/12/16 |
| DRAWN BY: JMB 5/87 | REV. 6/1/94 EEM/GRP |
| CHECKED BY: SJD 9/87 | REV. 8/16/99 RWW/LES |
| | REV. 5/1/06 TLA/GM |