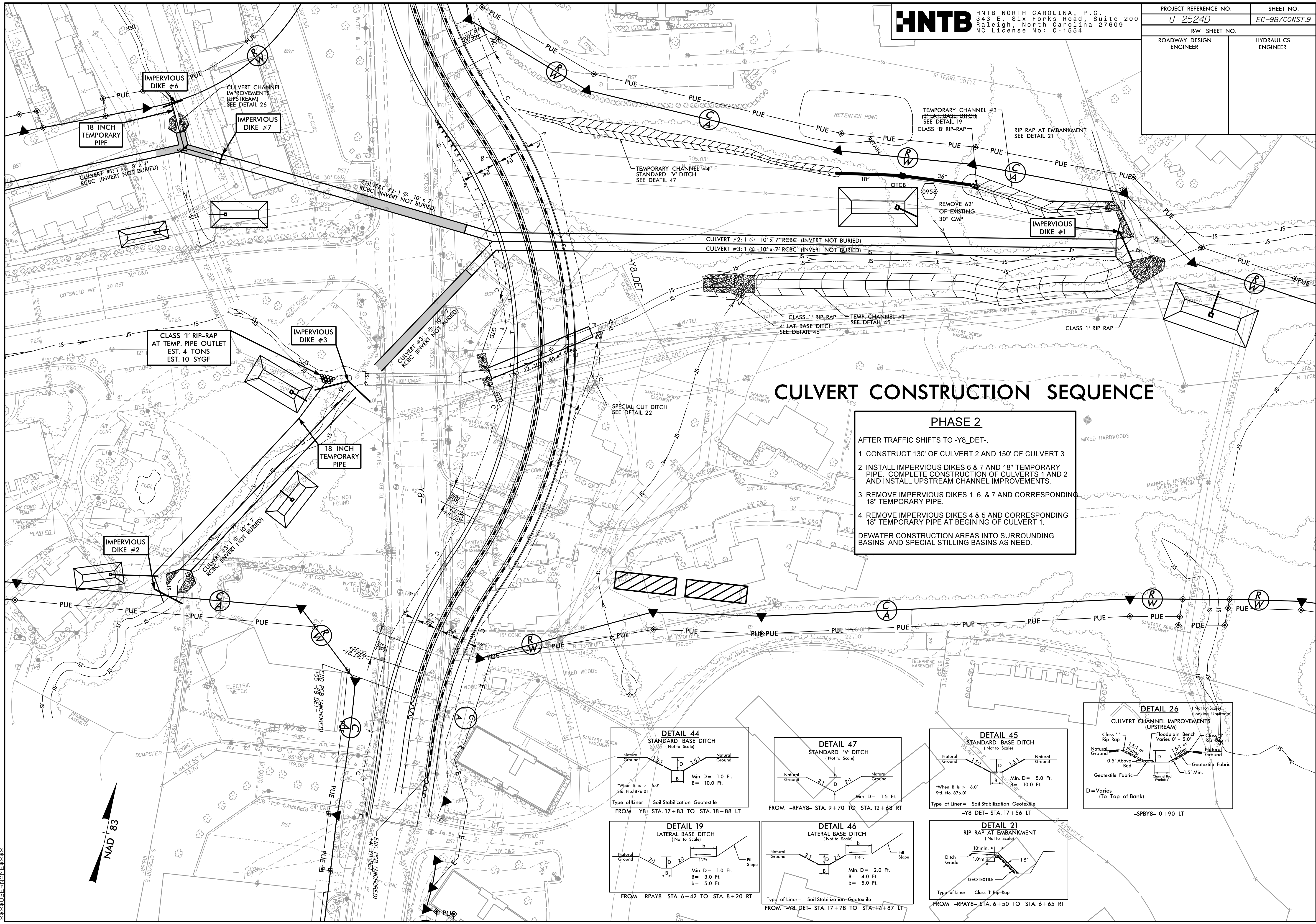


PROJECT REFERENCE NO.	SHEET NO.
U-2524D	EC-9B/CONST.9
RW SHEET NO.	
ROADWAY DESIGN ENGINEER	HYDRAULICS ENGINEER

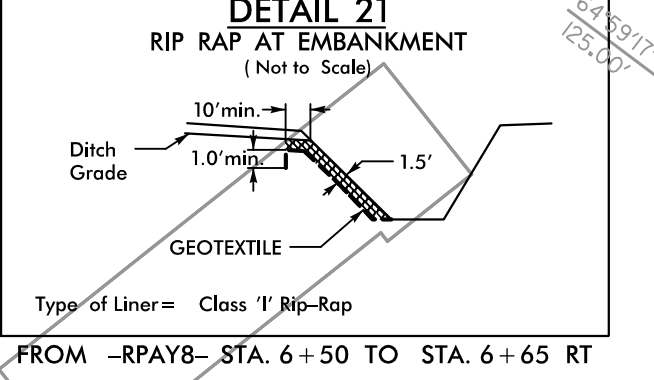
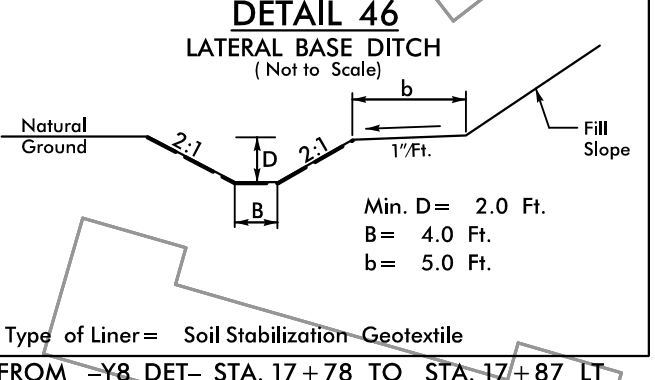
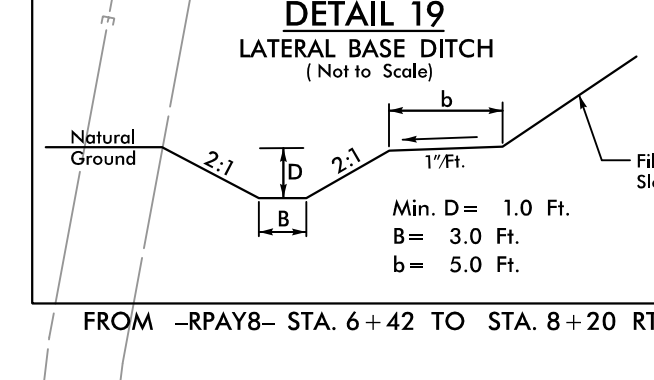
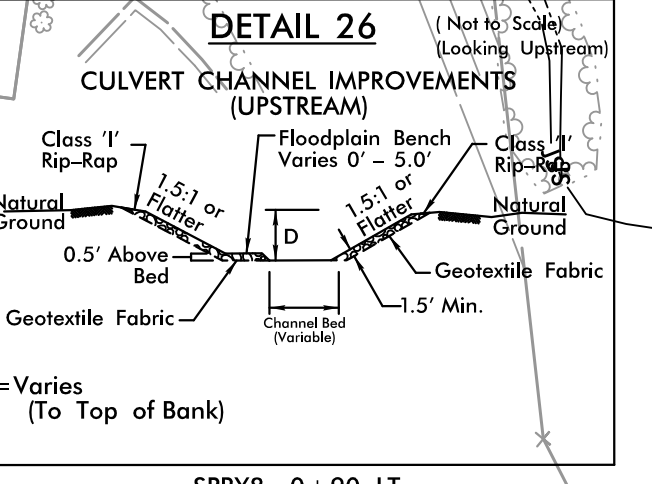
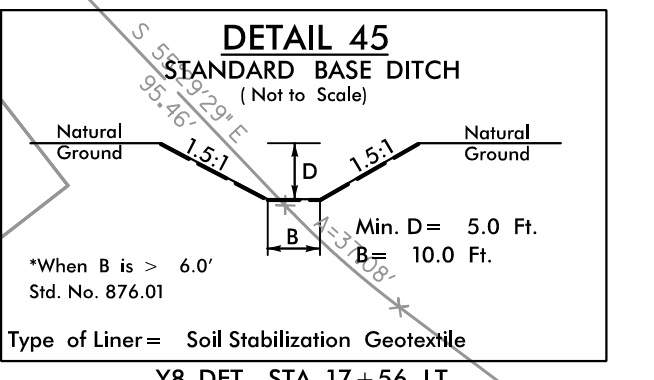
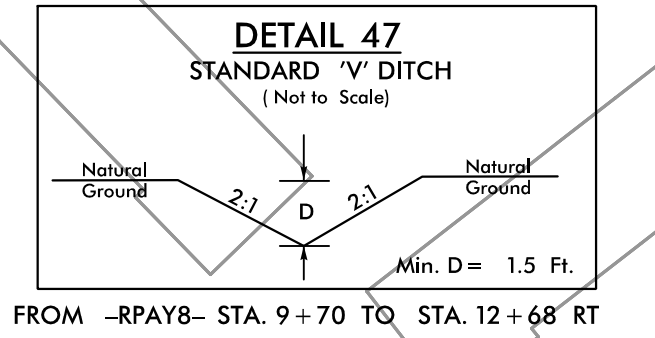
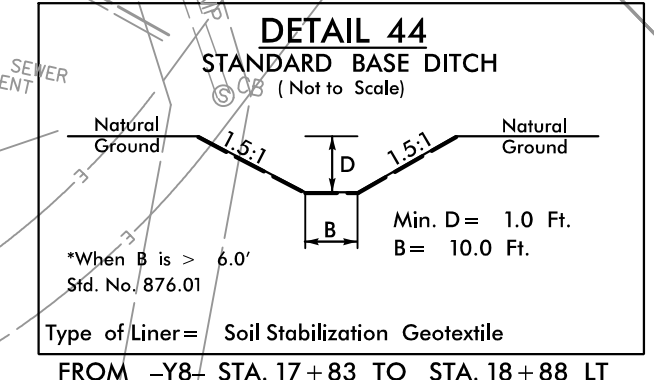


CULVERT CONSTRUCTION SEQUENCE

PHASE 2
 AFTER TRAFFIC SHIFTS TO -Y8 DET.-

1. CONSTRUCT 130' OF CULVERT 2 AND 150' OF CULVERT 3.
2. INSTALL IMPERVIOUS DIKES 6 & 7 AND 18" TEMPORARY PIPE. COMPLETE CONSTRUCTION OF CULVERTS 1 AND 2 AND INSTALL UPSTREAM CHANNEL IMPROVEMENTS.
3. REMOVE IMPERVIOUS DIKES 1, 6, & 7 AND CORRESPONDING 18" TEMPORARY PIPE.
4. REMOVE IMPERVIOUS DIKES 4 & 5 AND CORRESPONDING 18" TEMPORARY PIPE AT BEGINNING OF CULVERT 1.

DEWATER CONSTRUCTION AREAS INTO SURROUNDING BASINS AND SPECIAL STILLING BASINS AS NEED.



10:51:45 AM h:\hd_CSRI-3_phase.dgn

