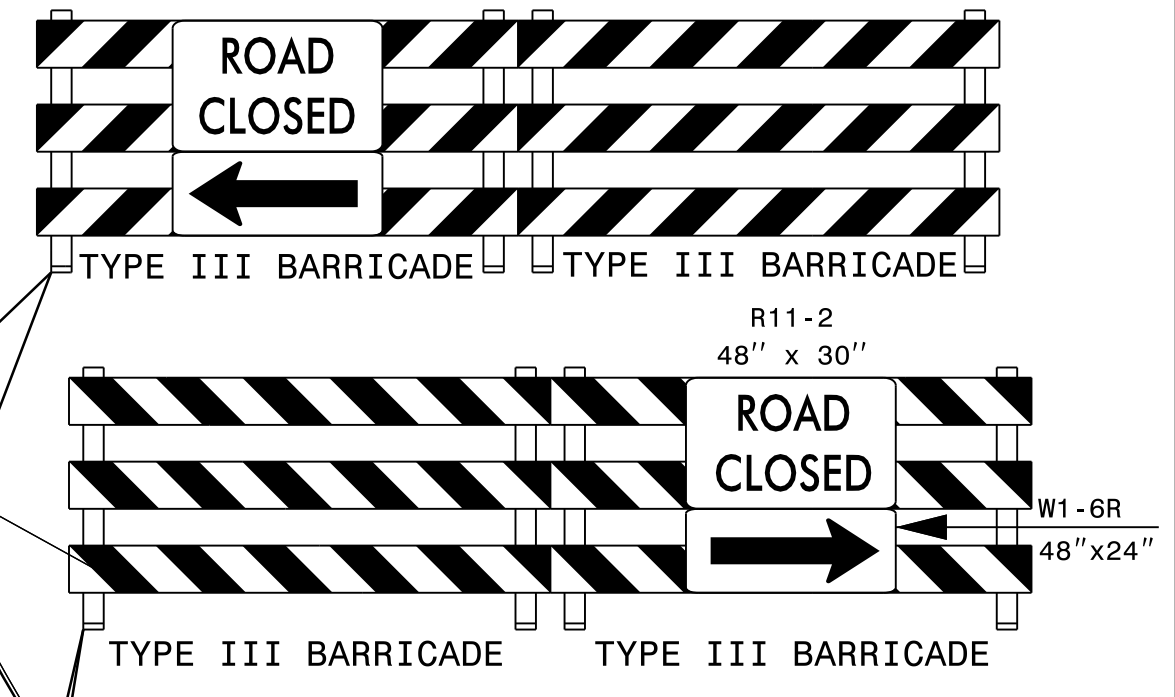
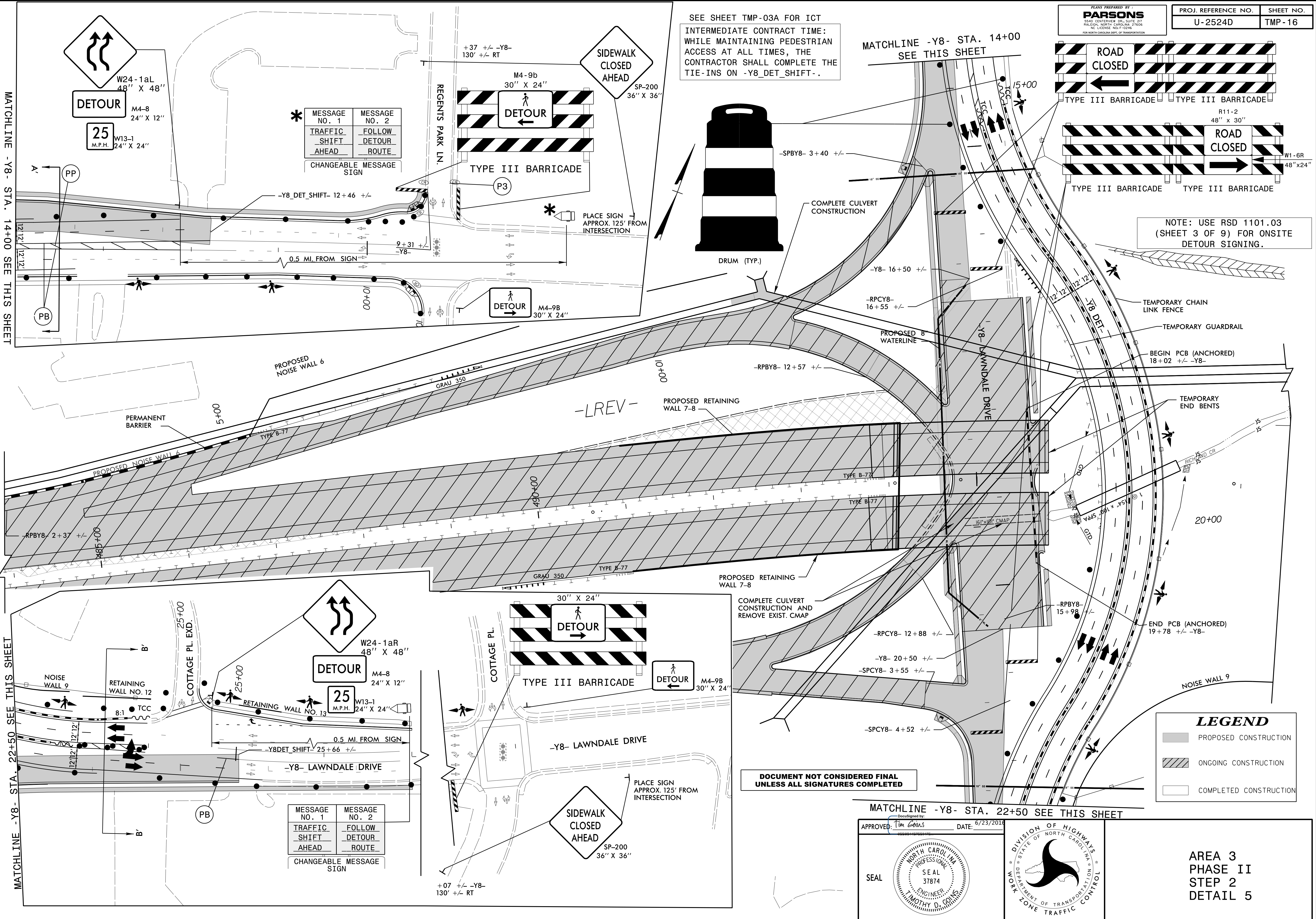


SEE SHEET TMP-03A FOR ICT  
 INTERMEDIATE CONTRACT TIME:  
 WHILE MAINTAINING PEDESTRIAN  
 ACCESS AT ALL TIMES, THE  
 CONTRACTOR SHALL COMPLETE THE  
 TIE-INS ON -Y8\_DET\_SHIFT-.

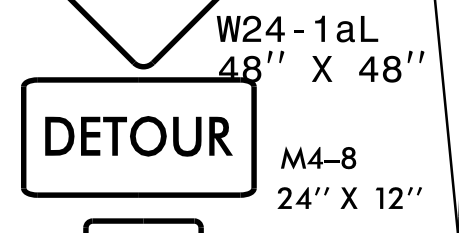


NOTE: USE RSD 1101.03  
 (SHEET 3 OF 9) FOR ONSITE  
 DETOUR SIGNING.



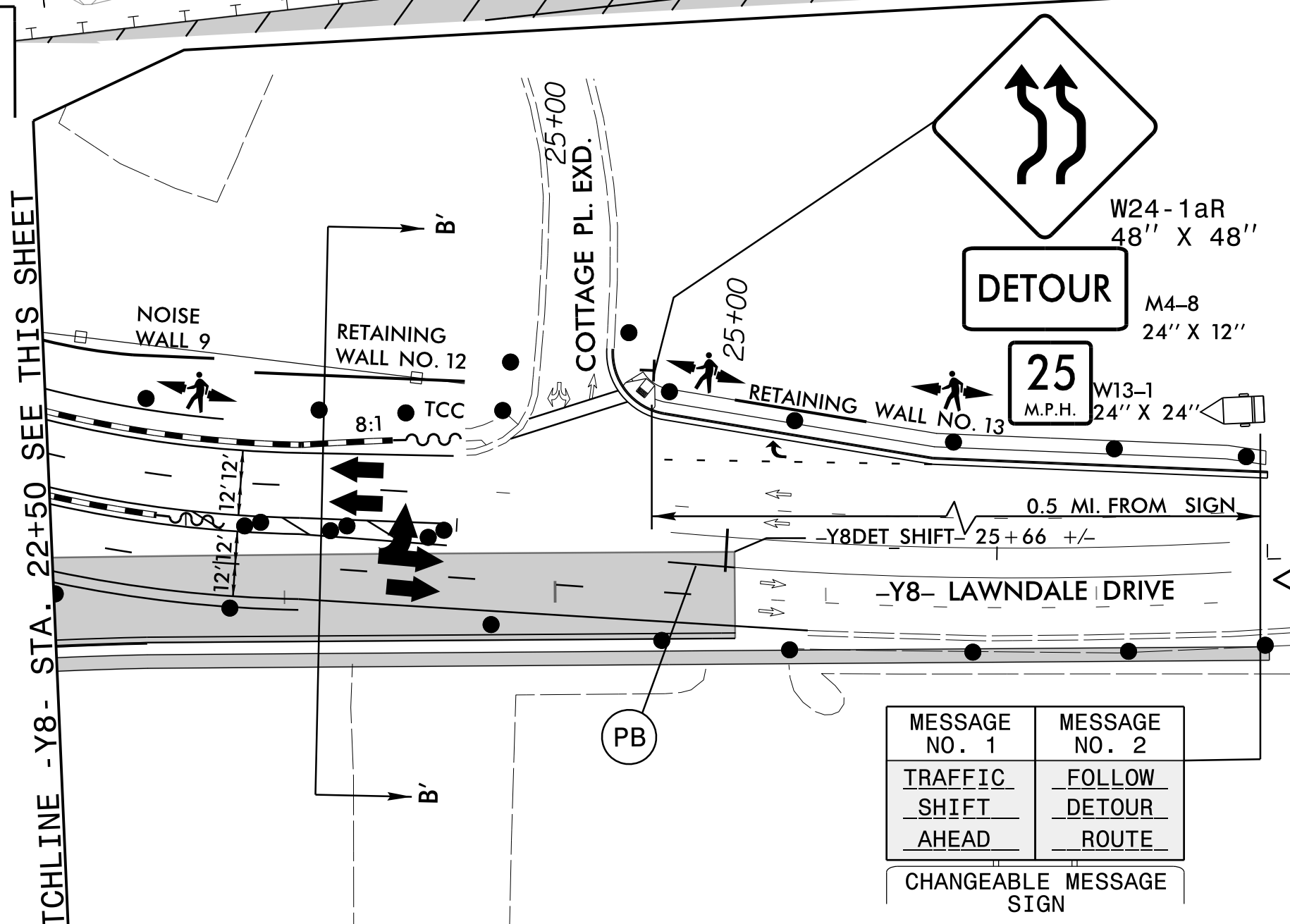
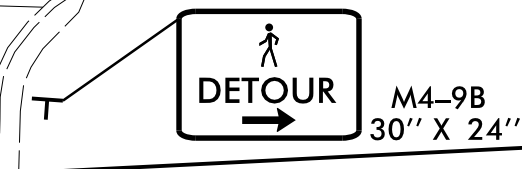
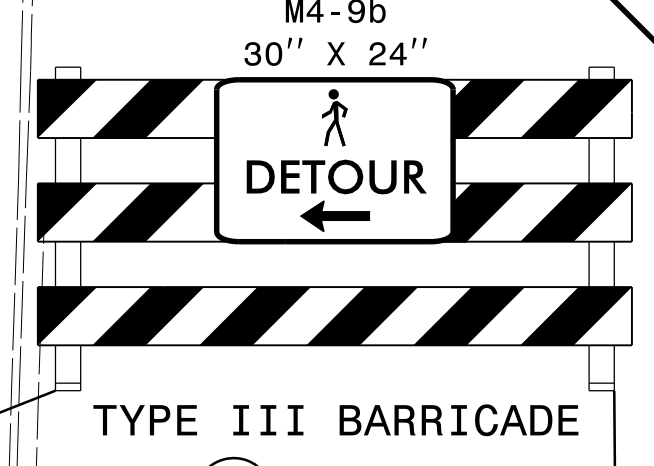
MATCHLINE -Y8- STA. 14+00 SEE THIS SHEET

MATCHLINE -Y8- STA. 22+50 SEE THIS SHEET



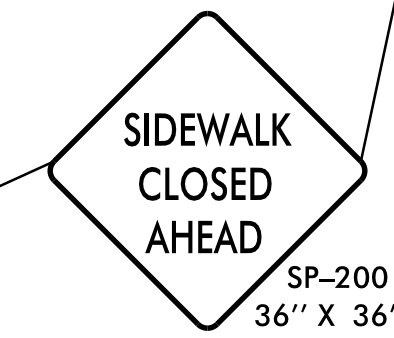
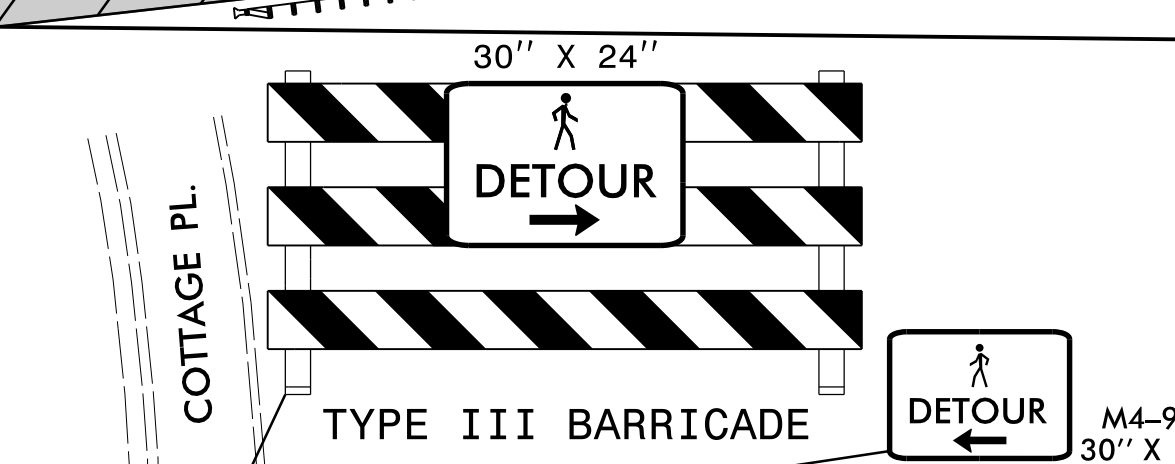
MESSAGE NO. 1	MESSAGE NO. 2
TRAFFIC SHIFT AHEAD	FOLLOW DETOUR ROUTE

CHANGEABLE MESSAGE SIGN



MESSAGE NO. 1	MESSAGE NO. 2
TRAFFIC SHIFT AHEAD	FOLLOW DETOUR ROUTE

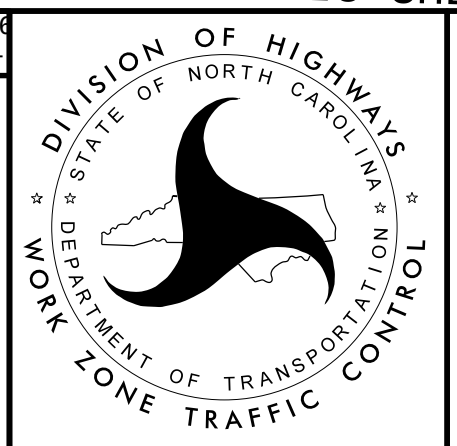
CHANGEABLE MESSAGE SIGN



MATCHLINE -Y8- STA. 22+50 SEE THIS SHEET

APPROVED: *Tim Collins* DATE: 6/23/2016

SEAL



AREA 3  
 PHASE II  
 STEP 2  
 DETAIL 5

DOCUMENT NOT CONSIDERED FINAL  
 UNLESS ALL SIGNATURES COMPLETED

23-JUN-2016 09:36 J:\U-2524D\TrafficControl\U-2524D-Tc\_Tcp\_16.dgn