

5/28/2016

BM #18 ELEVATION = 808.40'
N = 872785 E = 175351
-Y8- STATION 10+00
N 18° 44' 24.6" W DIST 575.94'
R/R SPIKE SET IN 22" OAK

-SPAY8-

BM #18 ELEVATION = 808.40'
N = 872785 E = 175351
-Y8- STATION 10+00
N 18° 44' 24.6" W DIST 575.94'
R/R SPIKE SET IN 22" OAK

-SPBY8-

HNTB
HNTB NORTH CAROLINA, P.C.
348 S.W. 1st Street, Suite 200
Raleigh, North Carolina 27609
NC License No. C-1584

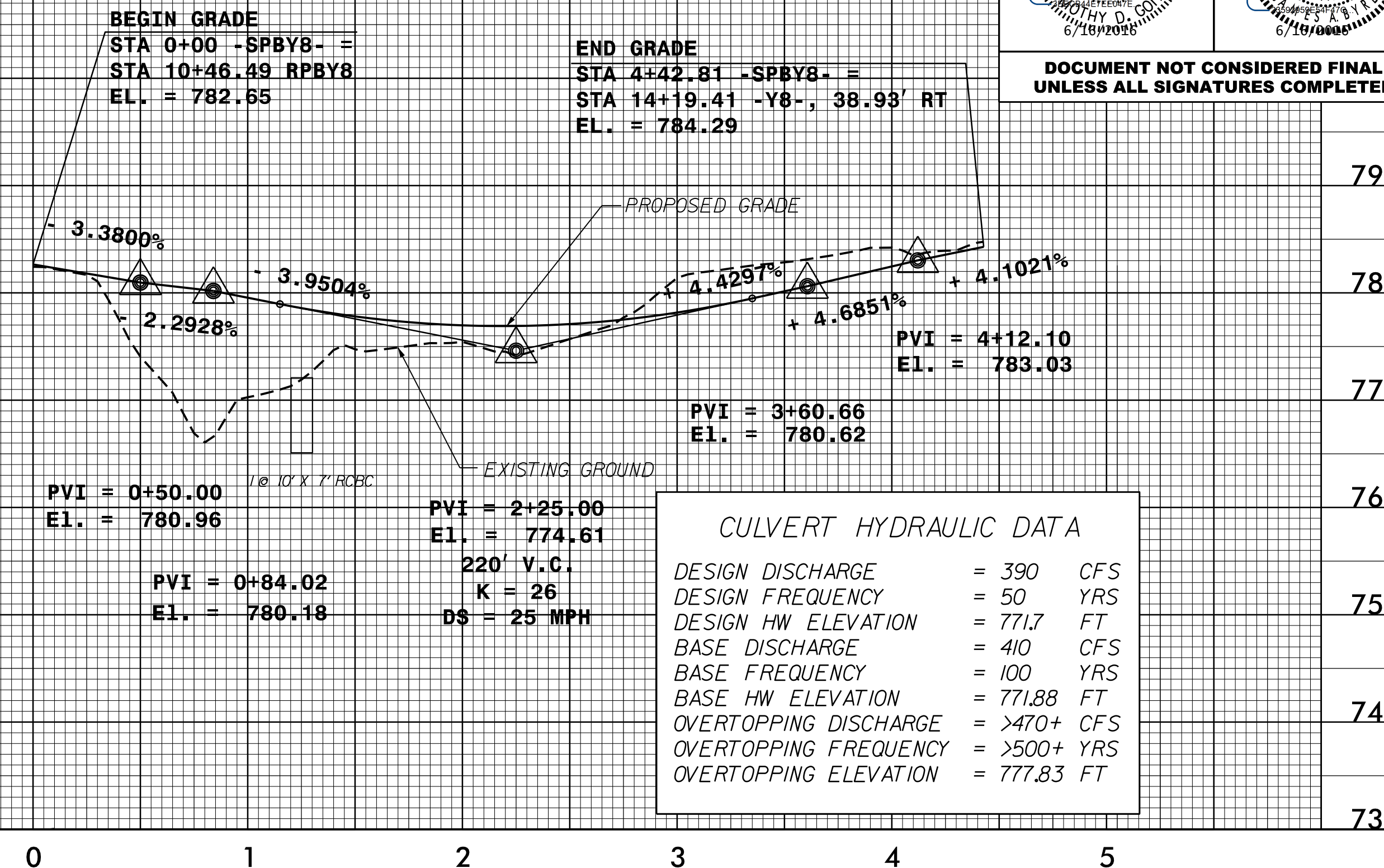
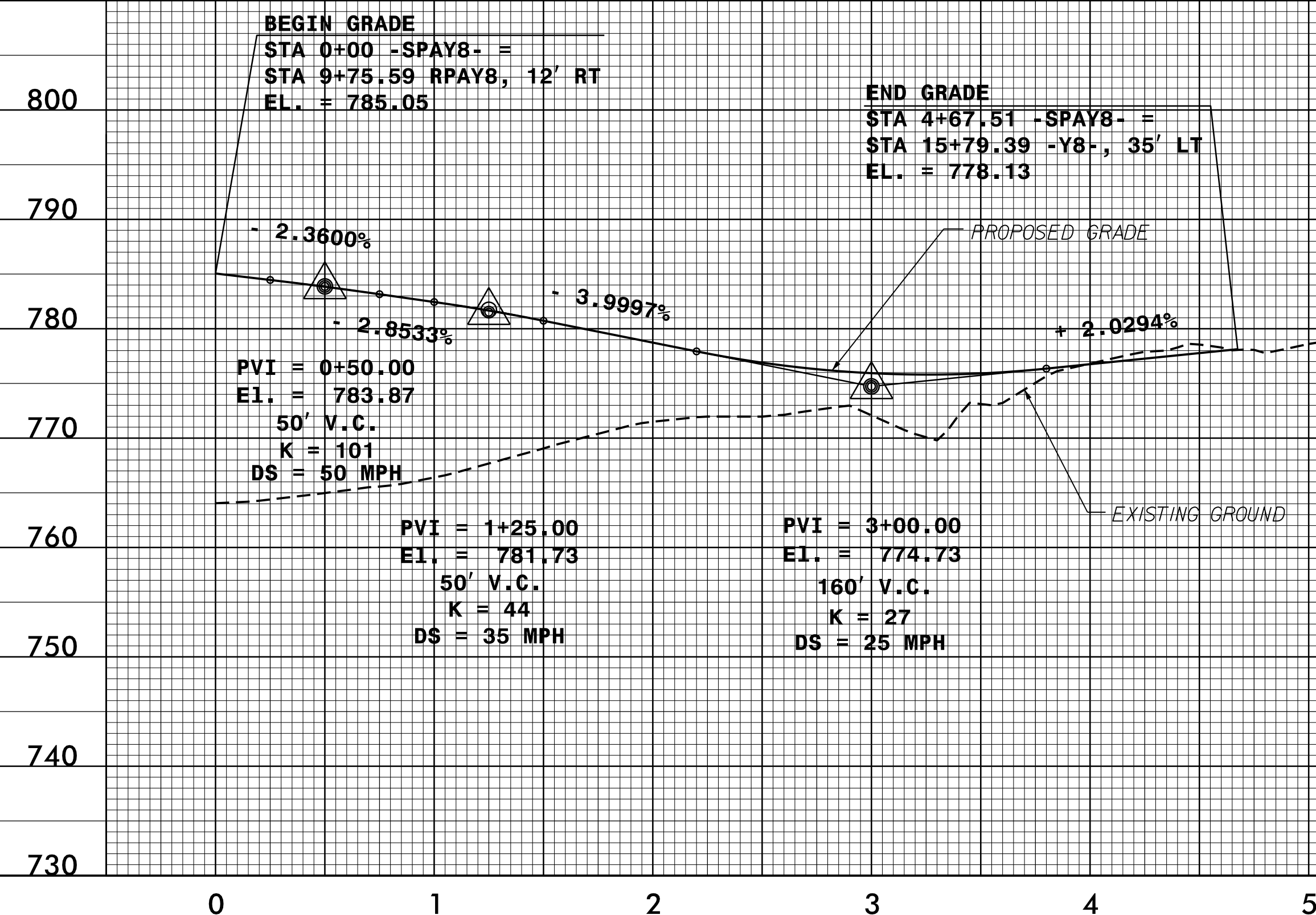
PLANS PREPARED BY:
PARSONS
RALEIGH, NORTH CAROLINA, (919) 854-1345
NC LICENSE NO. F-0246
FOR NORTH CAROLINA DEPT. OF TRANSPORTATION

PROJECT REFERENCE NO. U-2524D	SHEET NO. 28
ROADWAY DESIGN ENGINEER	HYDRAULICS ENGINEER

SEAL
MOTHY D. GARDNER
6/18/2016

SEAL
MOTHY D. GARDNER
6/18/2016

DOCUMENT NOT CONSIDERED FINAL UNLESS ALL SIGNATURES COMPLETED



CULVERT HYDRAULIC DATA

DESIGN DISCHARGE	= 390 CFS
DESIGN FREQUENCY	= 50 YRS
DESIGN HW ELEVATION	= 771.7 FT
BASE DISCHARGE	= 410 CFS
BASE FREQUENCY	= 100 YRS
BASE HW ELEVATION	= 771.88 FT
OVERTOPPING DISCHARGE	= >470+ CFS
OVERTOPPING FREQUENCY	= >500+ YRS
OVERTOPPING ELEVATION	= 777.83 FT

BM #19 ELEVATION = 841.27'
N = 869867 E = 1754214
-Y8- STATION 31+26
S 22° 19' 57.9" E DIST 312.72'
R/R SPIKE SET IN 18" OAK

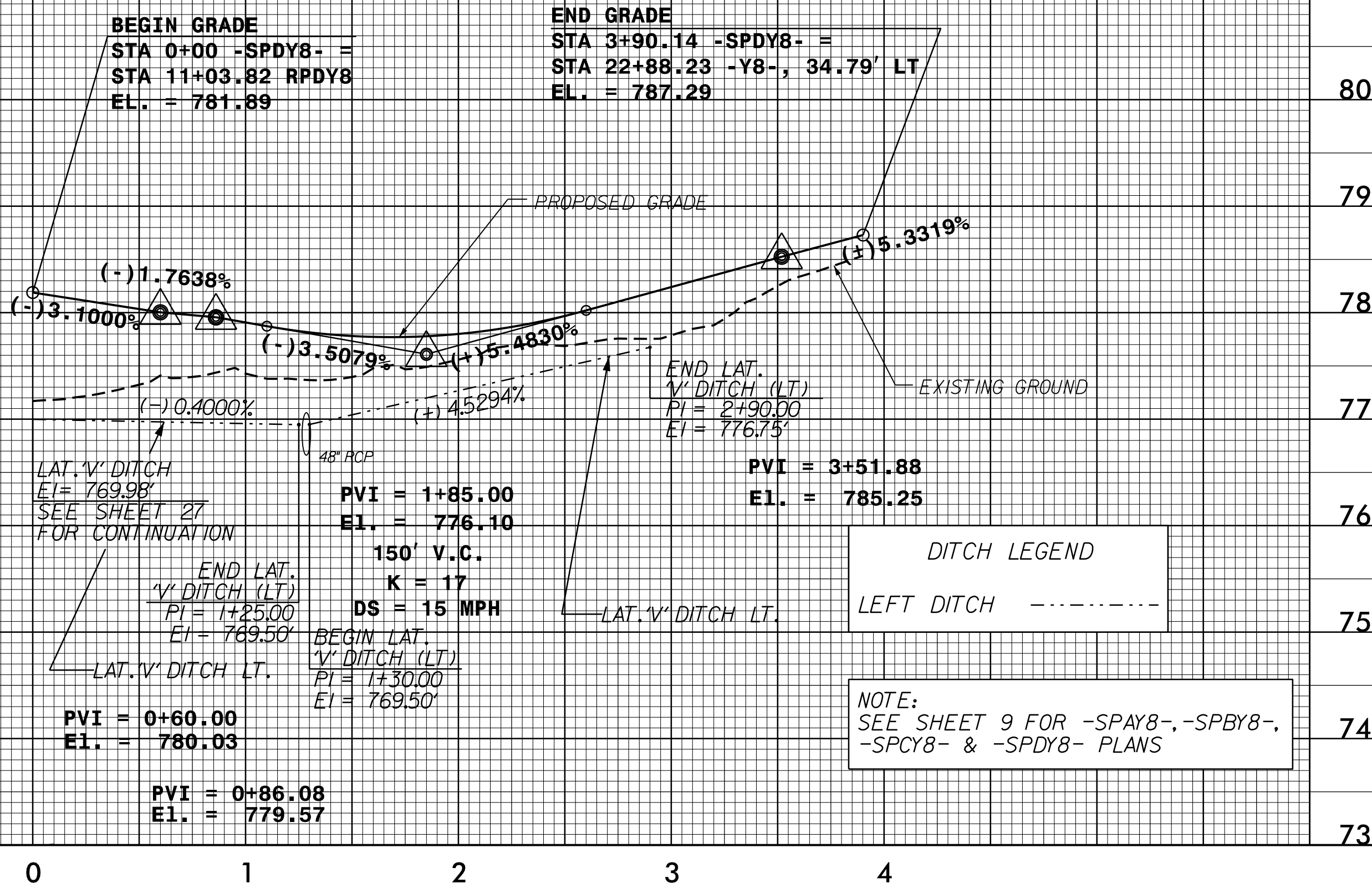
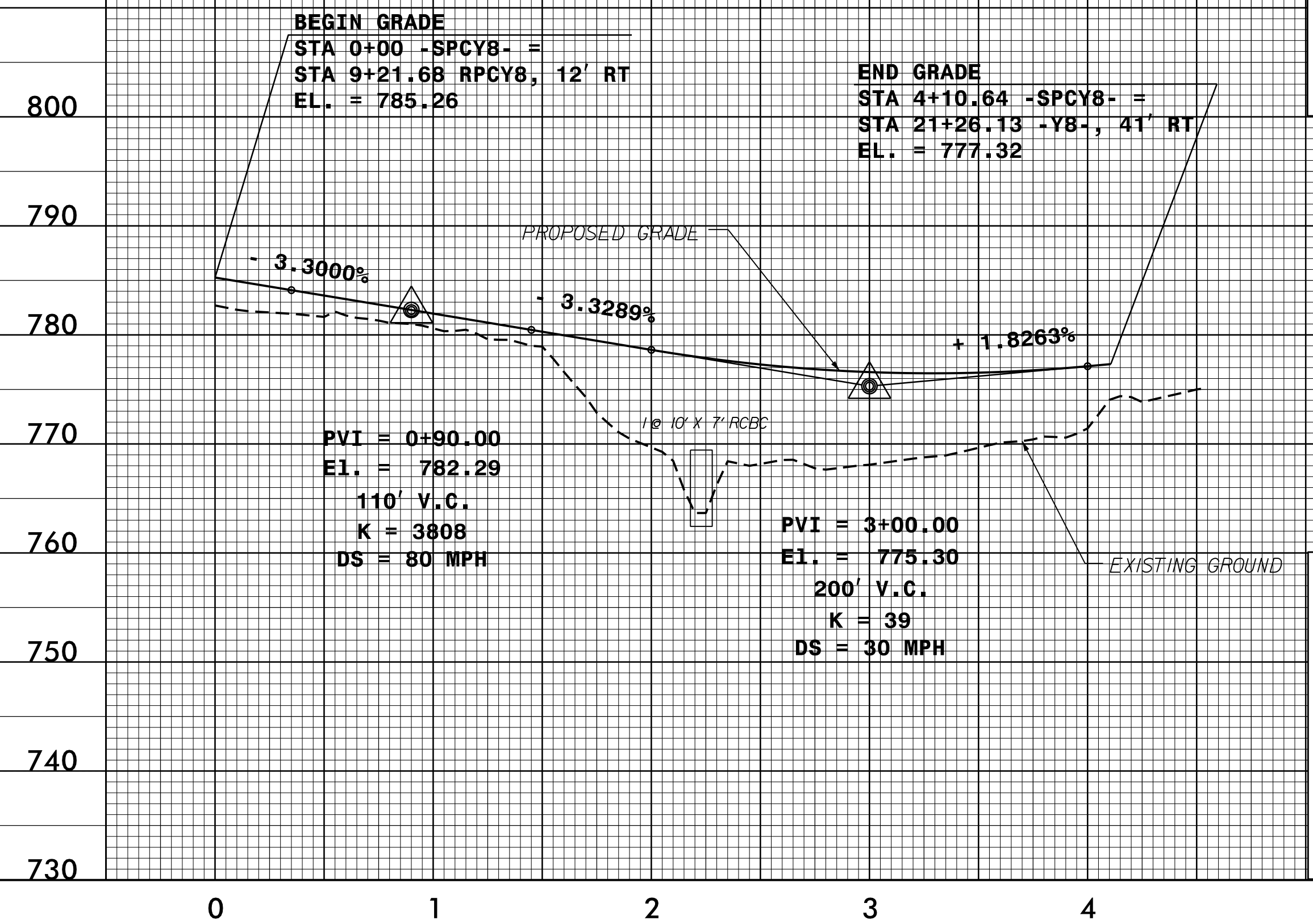
-SPCY8-

CULVERT HYDRAULIC DATA

DESIGN DISCHARGE	= 712 CFS
DESIGN FREQUENCY	= 50 YRS
DESIGN HW ELEVATION	= 772.0 FT
BASE DISCHARGE	= 902 CFS
BASE FREQUENCY	= 100 YRS
BASE HW ELEVATION	= 773.64 FT
OVERTOPPING DISCHARGE	= 1100 CFS
OVERTOPPING FREQUENCY	= 100+ YRS
OVERTOPPING ELEVATION	= 777.39 FT

-SPDY8-

BM #19 ELEVATION = 841.27'
N = 869867 E = 1754214
-Y8- STATION 31+26
S 22° 19' 57.9" E DIST 312.72'
R/R SPIKE SET IN 18" OAK



PIPE HYDRAULIC DATA
DRAINAGE STRUCTURE NO.0961

DRAINAGE AREA	= 34.7 AC
DESIGN FREQUENCY	= 50 YRS
DESIGN DISCHARGE	= 85 CFS
DESIGN HW ELEVATION	= 772.6 FT
100 YEAR DISCHARGE	= 100 CFS
100 YEAR HW ELEVATION	= 773.3 FT
OVERTOPPING FREQUENCY	= 500+ YRS
OVERTOPPING DISCHARGE	= 170+ CFS
OVERTOPPING ELEVATION	= 776.9 FT

DITCH LEGEND

LEFT DITCH	---
------------	-----

NOTE:
SEE SHEET 9 FOR -SPAY8-, -SPBY8-,
-SPCY8- & -SPDY8- PLANS

24-MAY-2016 2:35:41 PM P:\Projects\U2524D_R01_PSH_28.dgn