

5/28/99

BM #20 ELEVATION = 787.30'
N = 871657 E = 1756384
-L- STATION 520+12 151' LEFT
R/R SPIKE SET IN 24" OAK

CULVERT HYDRAULIC DATA

DESIGN DISCHARGE = 240 CFS
DESIGN FREQUENCY = 50 YRS
DESIGN HW ELEVATION = 767.7 FT
BASE DISCHARGE = 260 CFS
BASE FREQUENCY = 100 YRS
BASE HW ELEVATION = 768.02 FT
OVERTOPPING DISCHARGE = 300+ CFS
OVERTOPPING FREQUENCY = >500+ YRS
OVERTOPPING ELEVATION = 774.30 FT

-RPDY8-

HNTB
HNTB NORTH CAROLINA, P.C.
345 S. 51st Street, Suite 200
Raleigh, North Carolina 27609
NC License No. C-1584

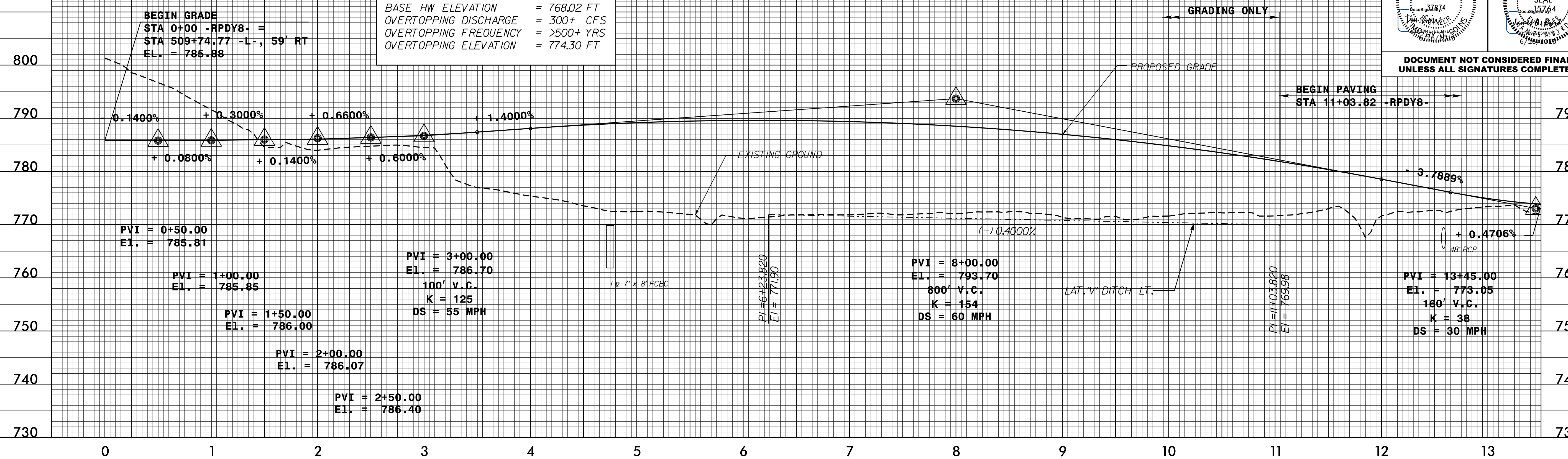
PLANS PREPARED BY:
PARSONS
RALEIGH, NORTH CAROLINA (99) 854-1345
NC LICENSE NO. F-0246
FOR NORTH CAROLINA DEPT. OF TRANSPORTATION

PROJECT REFERENCE NO. U-2524D
SHEET NO. 27

ROADWAY DESIGN ENGINEER
HYDRAULICS ENGINEER

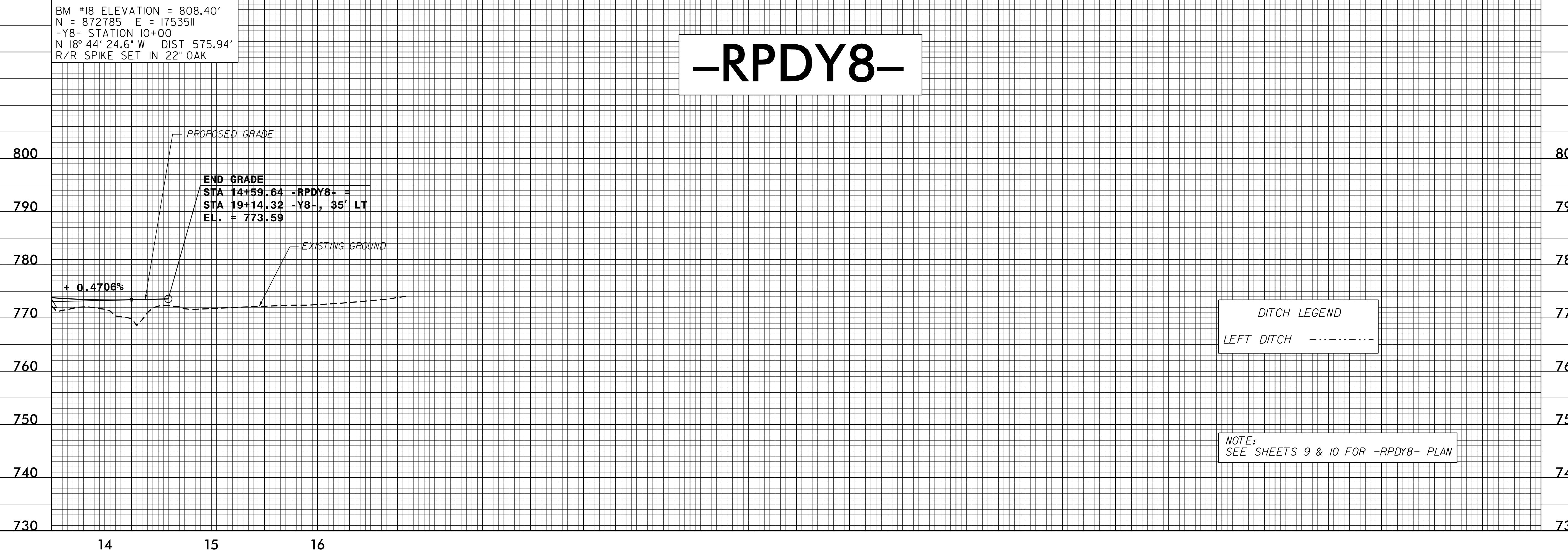
SEAL 37874
SEAL 15764

DOCUMENT NOT CONSIDERED FINAL
UNLESS ALL SIGNATURES COMPLETED



BM #18 ELEVATION = 808.40'
N = 872785 E = 1753511
-Y8- STATION 10+00
N 18° 44' 24.6" W DIST 575.94'
R/R SPIKE SET IN 22" OAK

-RPDY8-



24:11:56 2016 2:35:41 P:\Projects\2016\U2524D\RDY_PSH_27.dgn